

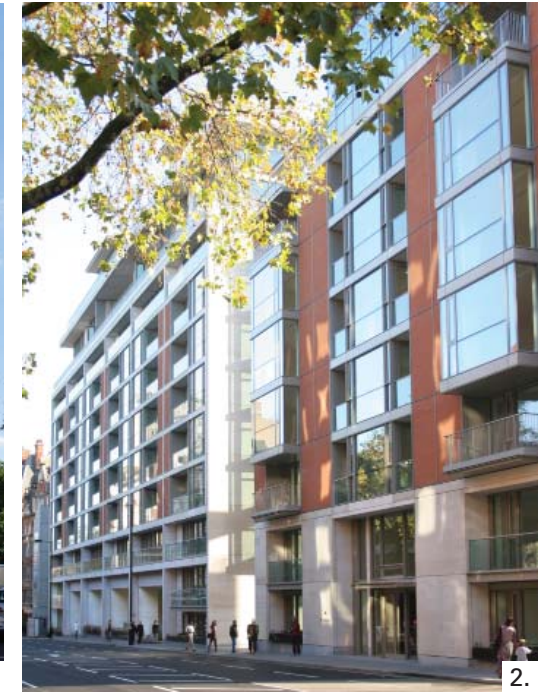
9.4 Supporting Reports

Transport Assessment
Waste Management Strategy
Lighting Strategy
Landscape Strategy
Statement of Community Involvement
Noise Impact Assessment
Socioeconomic Assessment
Health impact Assessment
Ecology
Air Quality Assessment
Wind/Microclimate Assessment
Ecological Appraisal
Tree Survey/Arboricultural Report
Biodiversity Survey and Report
Daylight and Sunlight Report
Internal Daylight Assessment
Townscape and Visual Impact Assessment
Heritage Statement
Ventilation and Extraction Statement
Drainage Strategy Report
Foul Sewage and Utilities Assessment
Energy Strategy
Sustainability Strategy
Social Sustainability Assessment
Flood Risk Assessment
Structures Report
Basement Impact Assessment
Construction Method Statement
Circular Economy Statement
Be Seen Evidence
Whole Life Carbon Assessment
GLA/BH Transition Plan
BREEAM Pre Assessment Report
Code of Construction Practice Appendix A

9.5 Squire and Partners Previous Experience

The adjacent buildings represent projects that type Squire and Partners have completed in Westminster

1. Grosvenor Square
2. 199 Knightsbridge
3. The Broadway
4. Clarges Mayfair
5. Chelsea Barracks
6. West End Gate



9.6 Berkeley Home Previous Experience

The adjacent buildings represent projects that type Berkeley Homes have completed in Westminster

1. Abell & Cleland
2. 9 Millbank
3. Ebury Square
4. Grosvenor Waterside
5. 190 Strand

