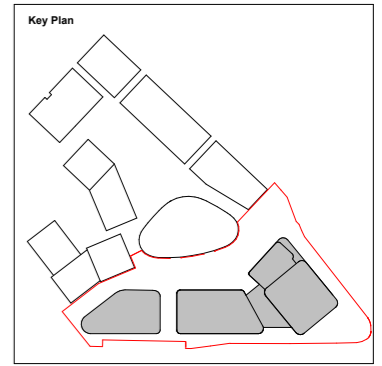


Do not scale from this drawing. All dimensions to be checked on site. All omissions and discrepancies to be reported to the Architect immediately

This work is copyright and shall not be reproduced or used for any other purpose without the written permission of Squire and Partners.

- Bike Store
- Resi Cycle lift
- Office Cycle lift
- Users link between lift cycling facilities / bike store
- Bike Store Shortfall



Key

	Proposed Planning Boundary
	PGPS Site Boundary
	Cycle Shortfall Reallocation

Basement 1 Residential Cycle Provisions

Block I = 338 Josta + 18 Sheffield
= 356 Cycle Spaces

Block J = 244 Josta + 32 Sheffield
= 276 Cycle Spaces

Block K = 246 Josta
= 246 Cycle Spaces

828 Josta + 50 Sheffield
TOTAL = 878 Cycle Spaces

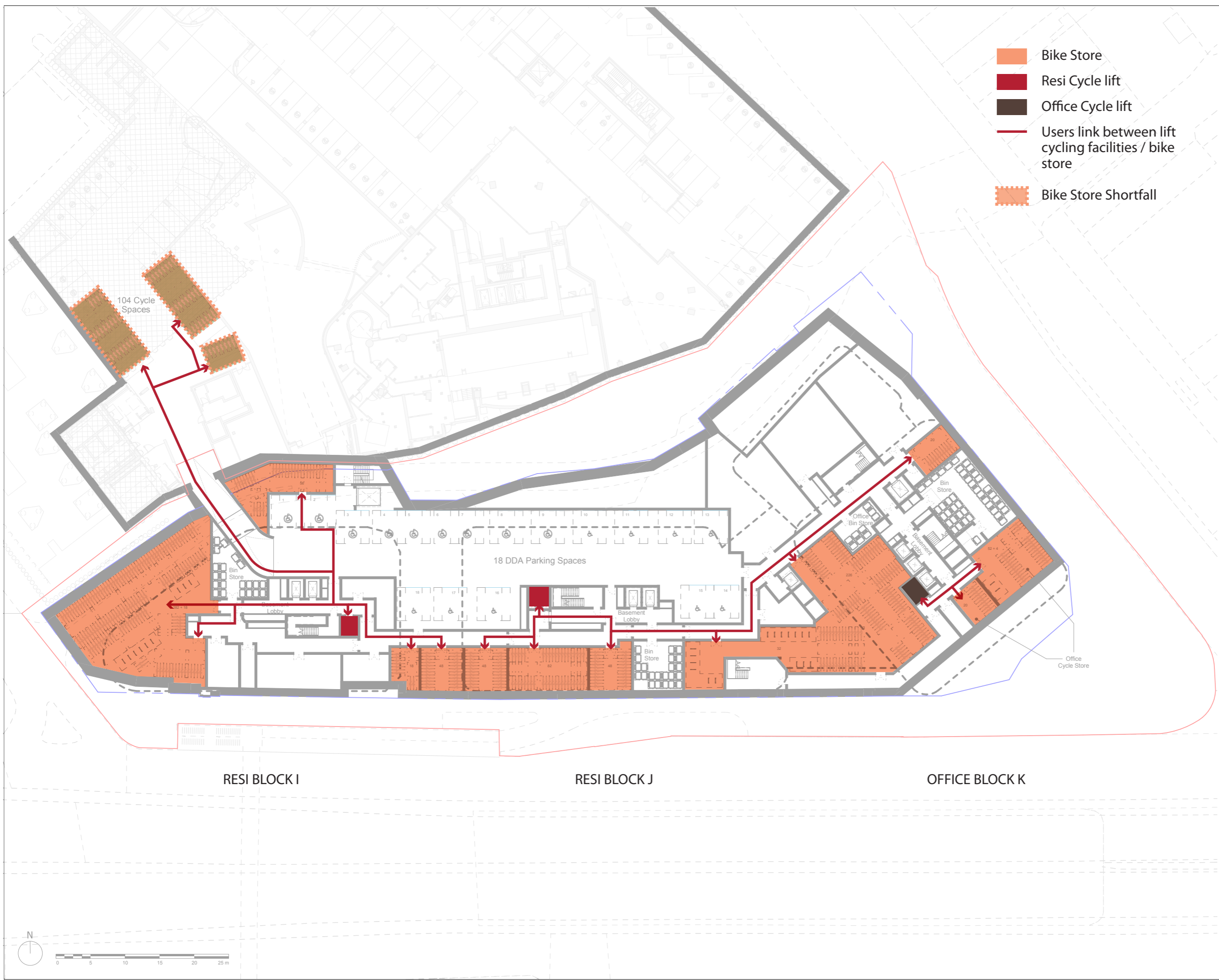
Target = 982 Cycle Spaces
(including 50 Sheffield)

104 shortfall Cycle Spaces provided in WEG

Basement 1 Office/Workspace Provisions

Block K = 71 Josta + 4 Sheffield
TOTAL = 75 Cycle Spaces

Overall Total = 953 Cycle Spaces provided in PGPS Basement -1



RESI BLOCK I

RESI BLOCK J

OFFICE BLOCK K

Issued For Planning	26/03/21	P1
Description	Date	Chk Rev

SQUIRE & PARTNERS

Squire and Partners LLP
The Department Store
248 Farnside Road, London SW9 8FR
T: 020 7278 5555
info@squireandpartners.com
www.squireandpartners.com

Project
Paddington Green Police Station
London, W2

Title
Proposed Basement Cycle Strategy Plan

Suitability	Status	
S2	For Information	
Date	Scale @ ISO A1	Job Number
26.03.21	1 : 250	15044
Drawing Number	Revision	
15044-SQP-ZZ-B1-DR-A-PL01161	P1	

