

#### 4.0 Inset balconies

##### 4.1 Lighting Approach

Surface mounted fittings on one side of balcony, to illuminate balcony without overspill of light to facade.

To be installed consistently across the facade. Proposed fitting <100mm diameter, circular shape to avoid edge issues to user's legs. Downward shielded output for glare avoidance and visual comfort.



Figure 4.1 Balcony lighting mood board



*Wall-mounted luminaire  
Manufacturer: iGuzzini  
Product: Walky round recessed  
Dimensions: D: 100mm W: 36mm*

Figure 4.2

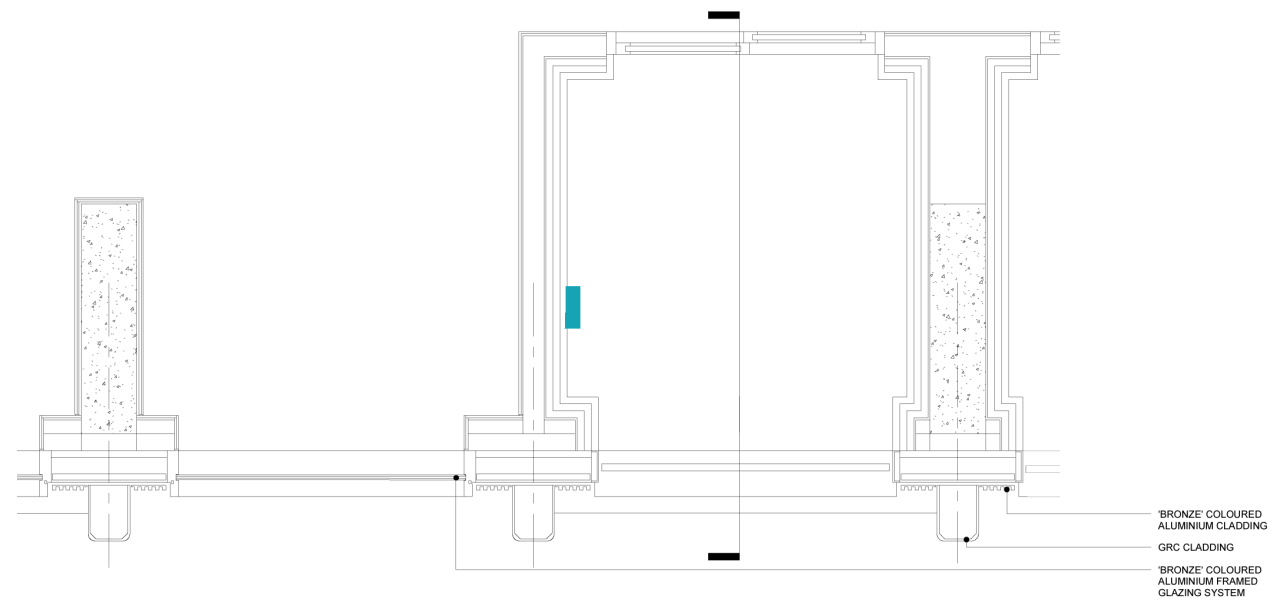
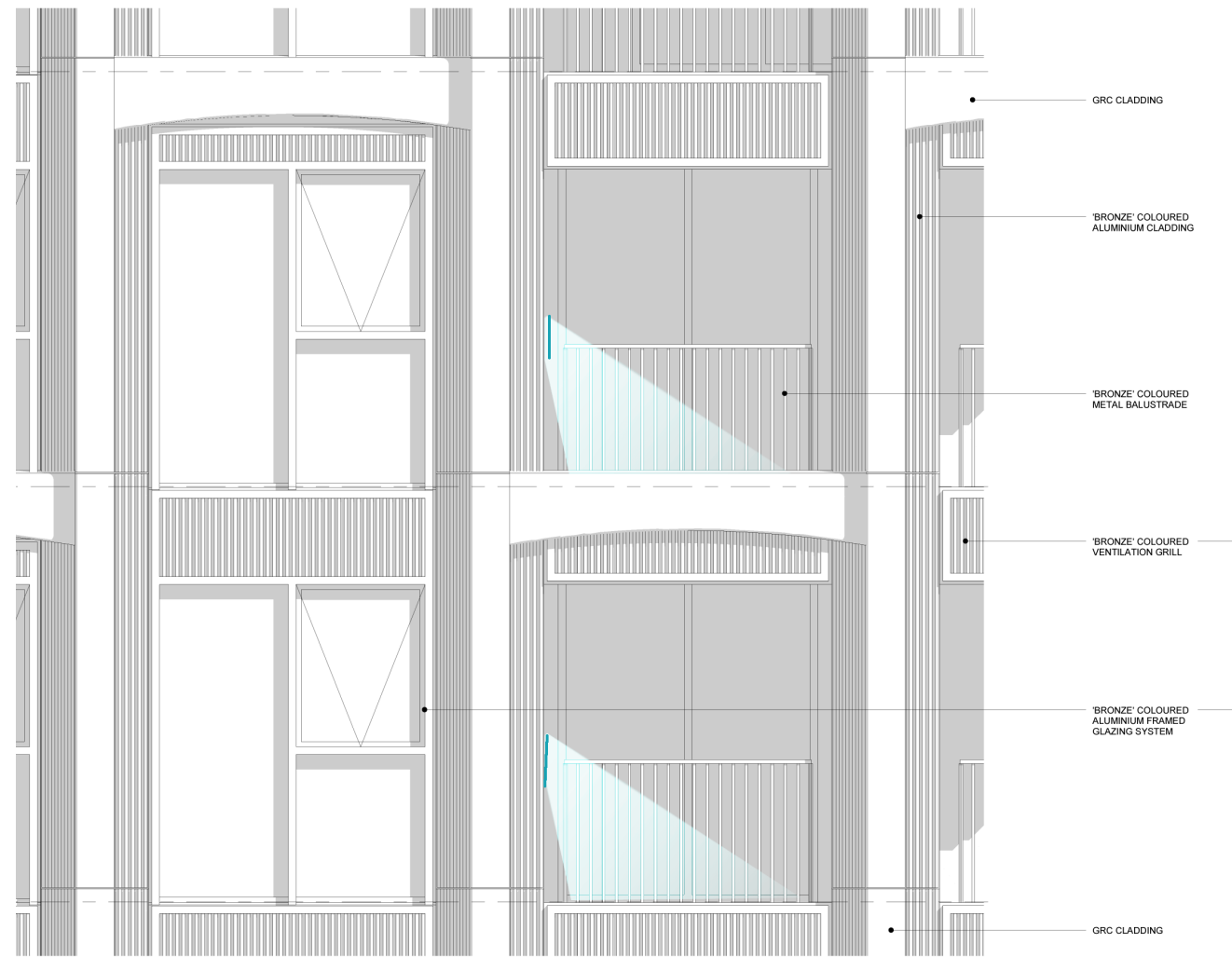


Figure 4.3 Diagram of Proposed balcony lighting

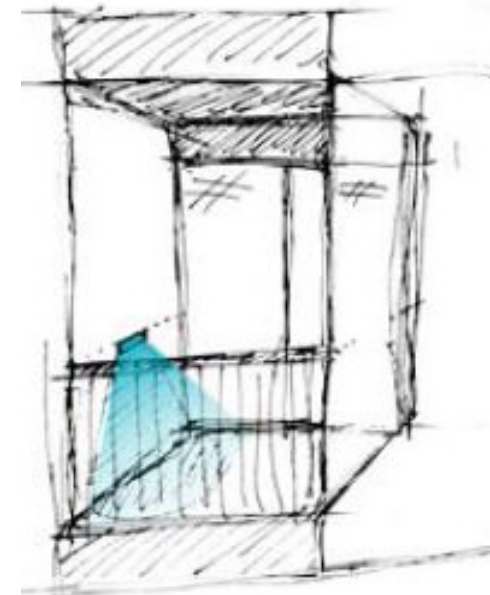


Figure 4.4 Balcony lighting concept sketch

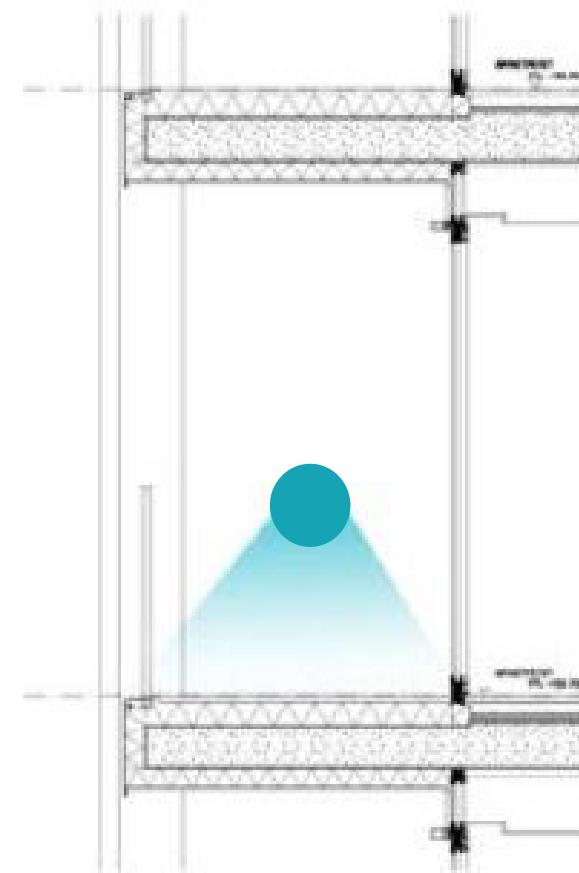


Figure 4.5 Balcony cross section illustrating wall mounted light fixture

SQUIRE & PARTNERS

77 Wicklow Street, London WC1X 9JY  
020 7278 5555 [info@squireandpartners.com](mailto:info@squireandpartners.com)  
[www.squireandpartners.com](http://www.squireandpartners.com)