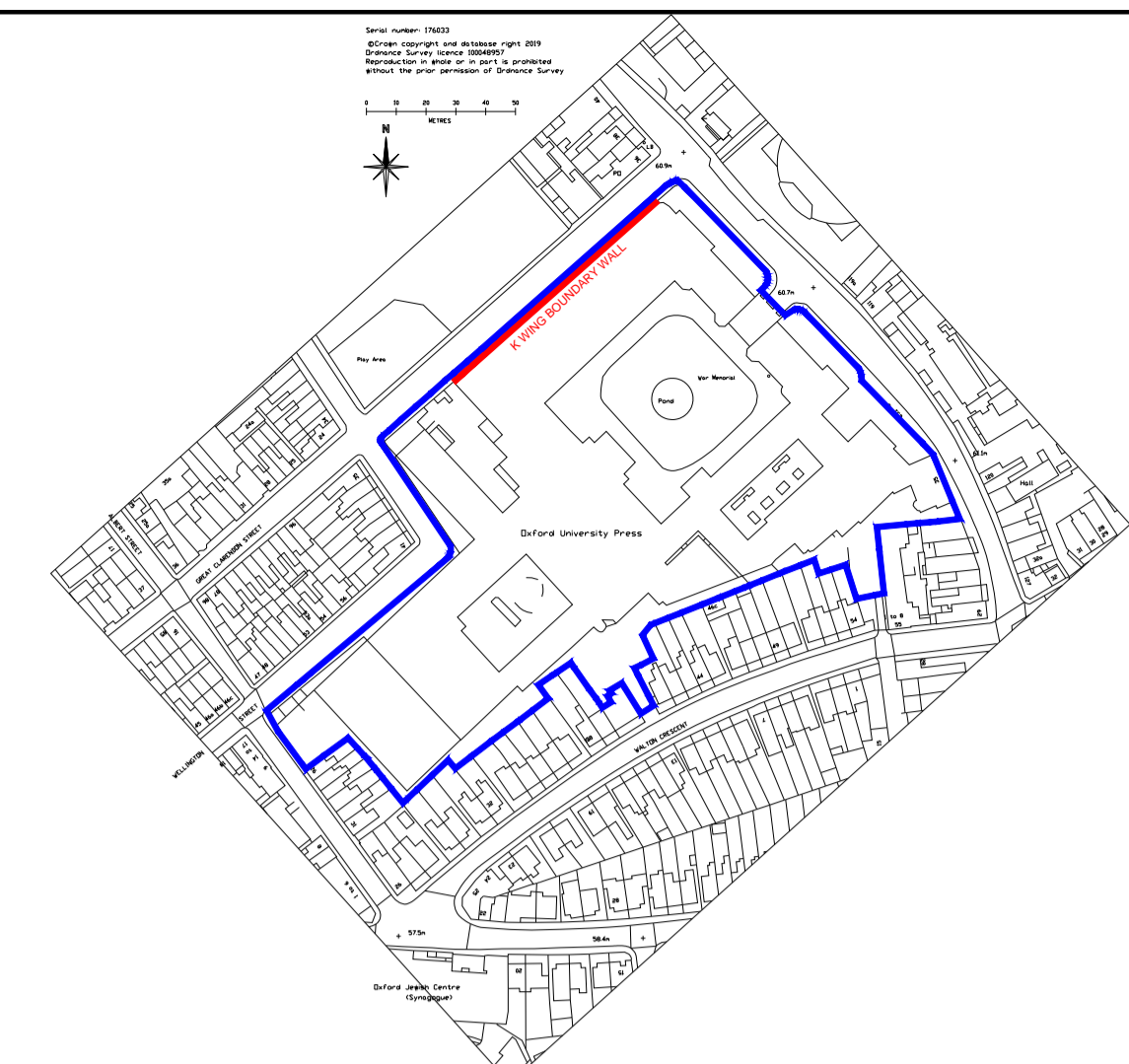
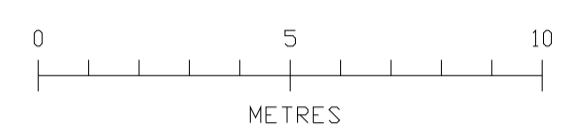
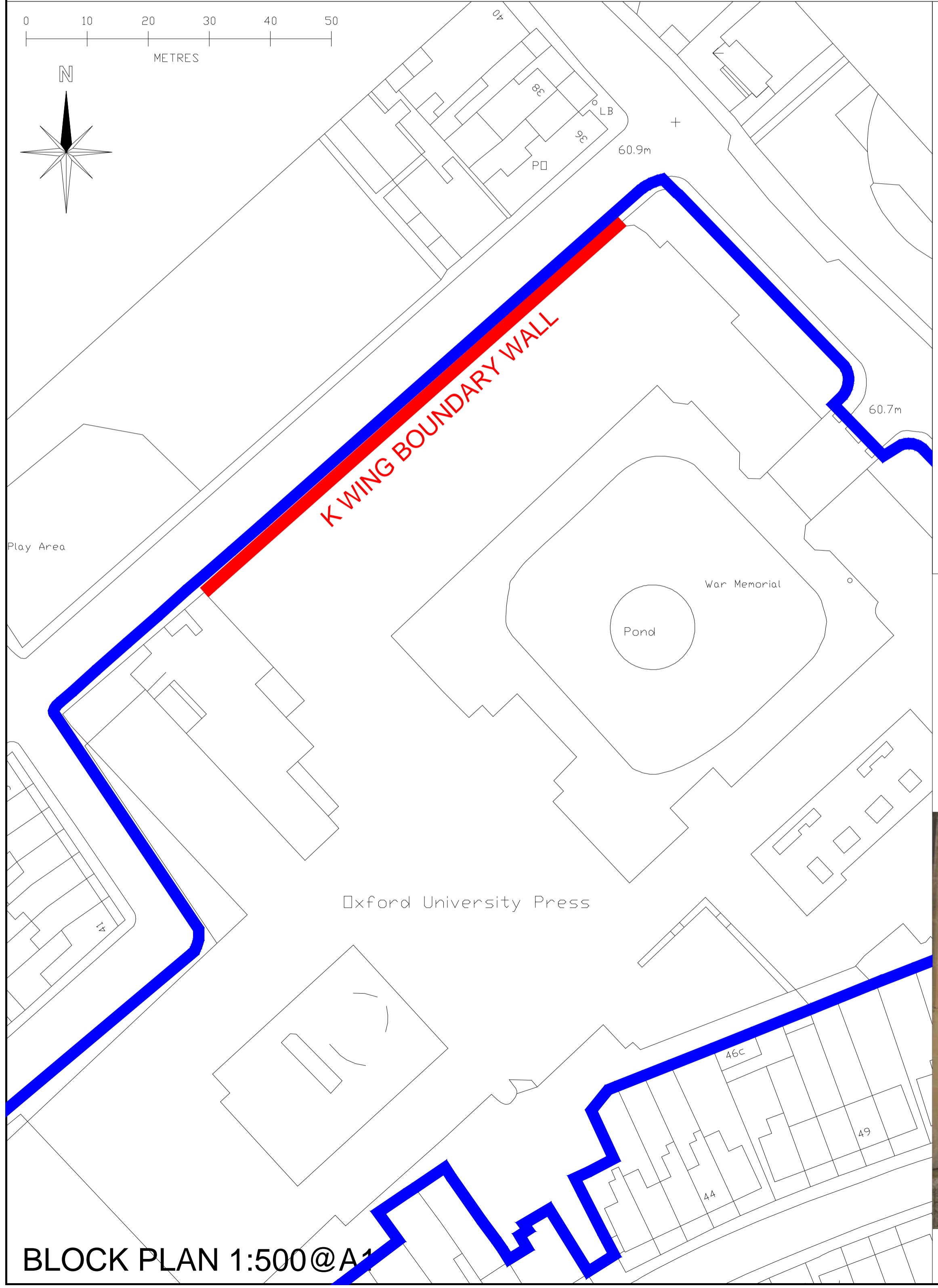


K WING OUTER BOUNDARY WALL

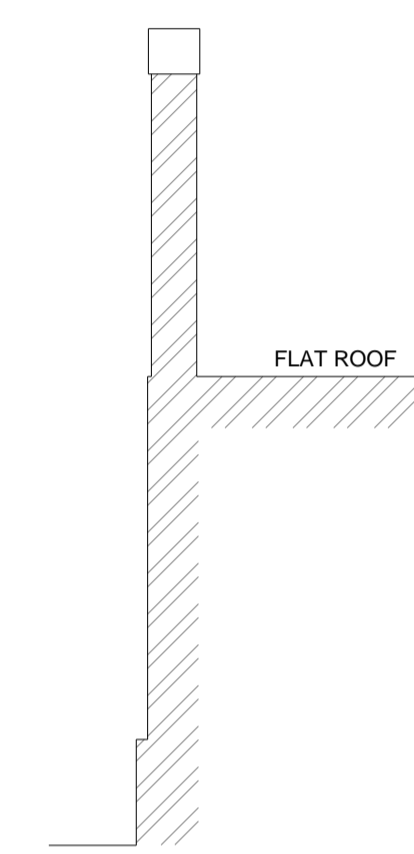
ELEVATIONS 1:150@A1



LOCATION PLAN 1:2500@A1

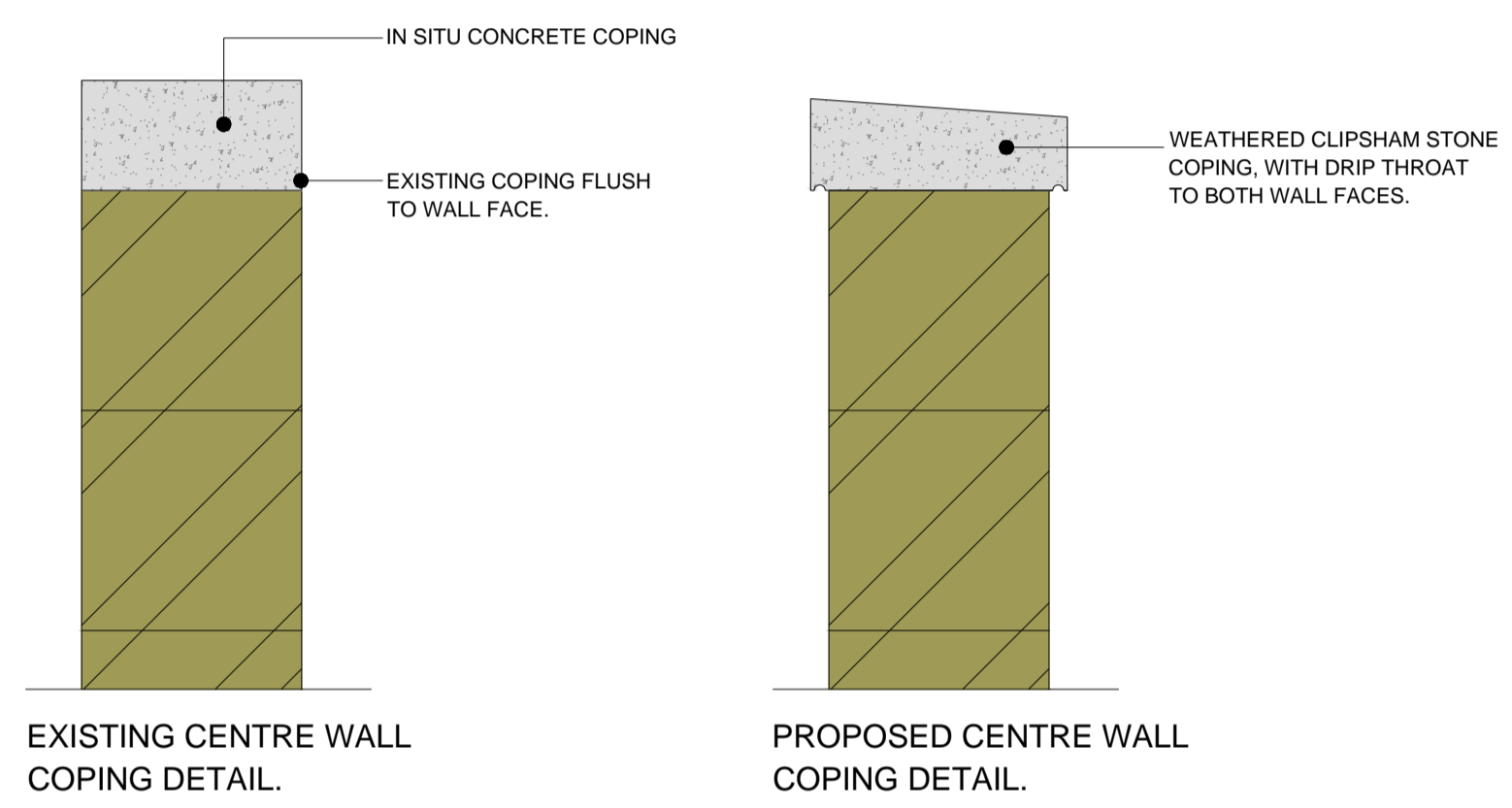


BLOCK PLAN 1:500@A1



WALL SECTION A-A

SECTIONS 1:50@A1



DETAILS APPROX 1:10@A1

GENERAL NOTES
DO NOT SCALE FROM PRINTS
CONTRACTOR TO VERIFY DIMENSIONS/DETAILS ON SITE
WORK SHALL BE AGREED WITH AND APPROVED BY OXFORD CITY COUNCIL CONSERVATION OFFICER.

LISTED BUILDING ISSUE

REV	AMENDMENT	DATE	CHKD
B	DRAWING REVISED	29.3.21	MAS
A	DRAWING REVISED	18.3.21	MAS



CLIENT
OXFORD UNIVERSITY PRESS

PROJECT
K WING BOUNDARY WALL
OXFORD UNIVERSITY PRESS
GREAT CLARENDON STREET
OXFORD
OX2 6DP

DRAWING TITLE
PROPOSED REMEDIAL WORKS TO K WING BOUNDARY WALL
GREAT CLARENDON STREET

SCALE	DRAWN BY	DATE
1:2500@A1	MAS	MAR'21
1:1500@A1		
1:150@A1		
DRAWING NUMBER	REVISION	CHECKED
01176/01	B	DB

NOTES

Remedial works to K Wing boundary wall (Great Clarendon Street)
Scope of Works summary (to be read in conjunction with the Specification)

The works are to Listed Buildings and shall be carried out using materials and methodology sympathetic to the historic building fabric.

The stonework is to be Specialist cleaned and repaired by OG Stonemasonry Contractors Ltd.
A general visual Condition assessment of the stonework has been carried out by OG Stonemasonry.
Cleaning
The DOFF super heater steam system to be used to remove organic growth and kill spores.
The TORC system to be used to remove pollutants, sulphates etc.
Stone cleaning to:
a. Reveal the actual condition of the stonework where surface deposits are potentially concealing failed pointing, structural defects etc.
b. Slow down deterioration of the stonework caused by surface deposits,
c. Blend the existing stone with any localised repairs/indents,
d. Generally improve the appearance of the stonework.
Level of stone cleaning to be approved on site by Oxford City Council Conservation Officer.

Copings
The central horizontal wall section copings have been replaced with in situ cast concrete, which is cracked and worn, with vegetation growth to it and the initial stone wall course below.
Carefully remove concrete copings and take off upper course of masonry.
Clean surfaces, remove vegetation and treat with suitable weedkiller.
Reinstate upper course of masonry.
Supply and install new once weathered Clipsham (or similar) stone copings, with drip throat to both wall faces, to match adjacent existing stone copings.

Repair methodology to be:
General
Tool back loose and friable stone surfaces due to Sulphates and rainwater action.
Tool back old cement/sand render patch repairs.
Indents
Generally caused by corrosion of fixings within the bed joints, resultant expansion of the metal and fracturing of the surrounding stone faces.
Broken stone to be removed; any corroded fixings to be removed and replaced with stainless steel.
Indent with new section of stone to match existing.
Replacement stone
Individual stone blocks beyond repair (estimated less than 5No to complete wall) to be carefully cut out and replaced with stone block to match existing.
It is envisaged that a suitable stone for indent/replacement work would be Clipsham; Conservation Officer to agree sample repair/indent.
Repointing
Remove any loose/cracked materials; rake out by hand and repoint in suitable lime mortar, to match existing colour and texture.
The extent of stone repair/replacement and of mortar repair/replacement to be agreed on site by Oxford City Council Conservation Officer.



BOUNDARY PHOTO