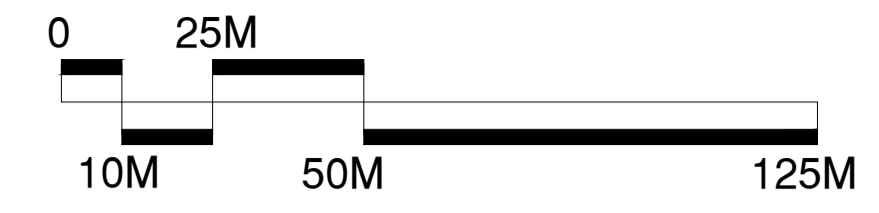


# Marple Hall School

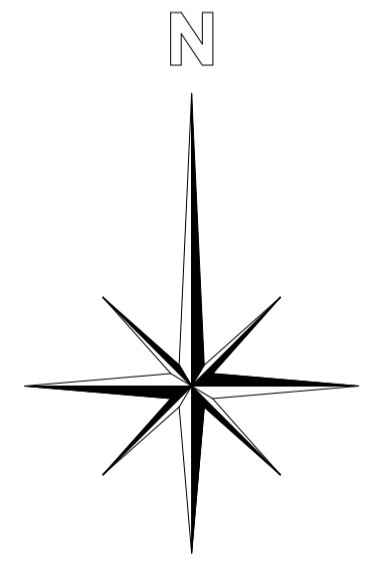
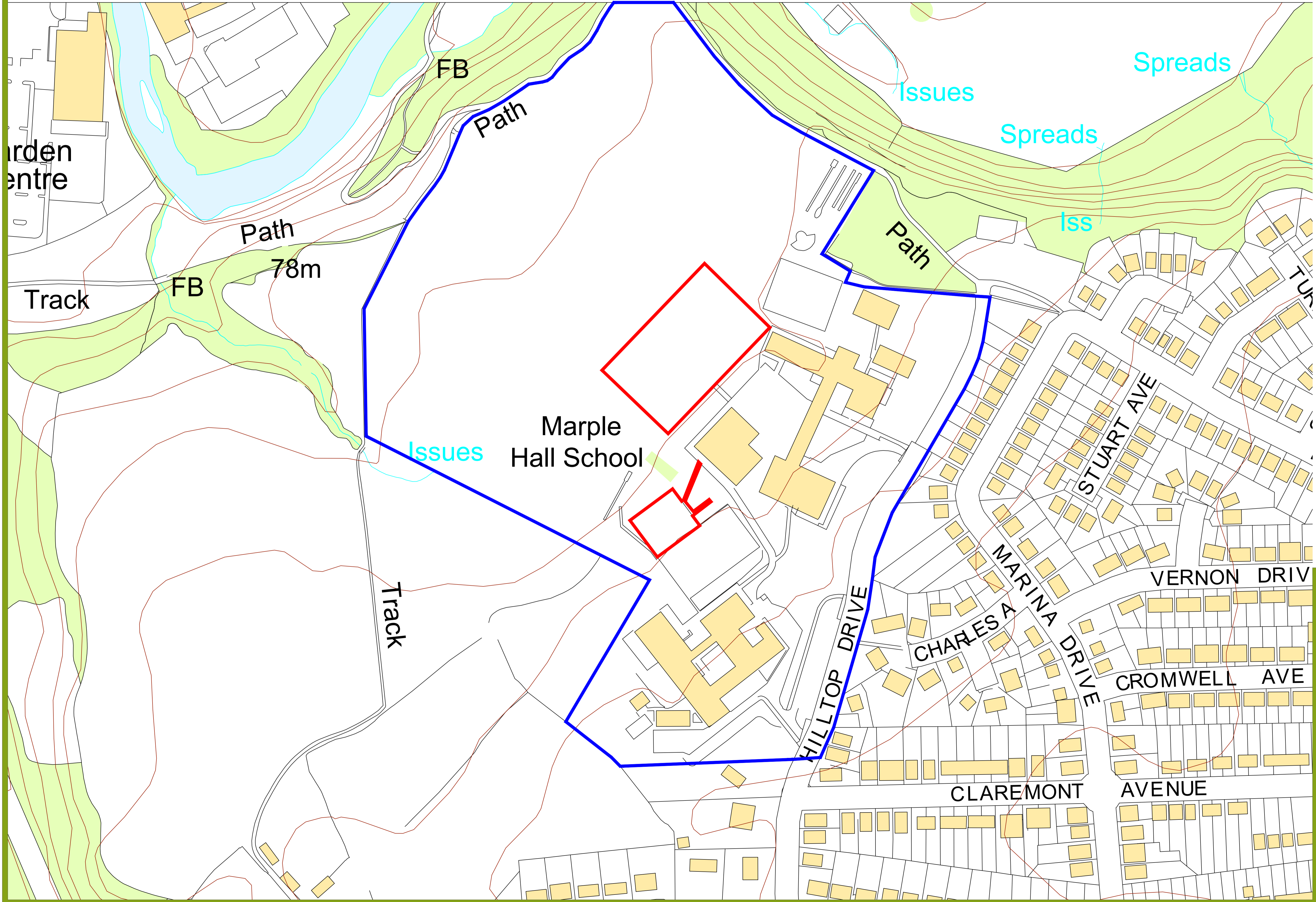
Refurbishment of Artificial Pitch



**SSL**  
Surfacing Standards Limited  
Office: 2, Emmerham House, Appleton Road  
Upperham, Rotherham, LE15 9WY  
01142 801312

CONSULTANTS  
Surfacing Standards Ltd  
Office: 2, Emmerham House, Appleton Road  
Upperham, Rotherham, LE15 9WY  
01142 801312

1. DO NOT SCALE FROM DRAWING. ALL DIMENSIONS TO BE CHECKED ON SITE PRIOR TO COMMENCEMENT OF WORKS.  
2. THIS DRAWING IS COPYRIGHT TO SURFACING STANDARDS LTD.  
3. ALL PERSONNEL SHOULD BE AWARE OF THE HEALTH AND SAFETY PLAN WHICH IS RETAINED IN THE SITE MANAGERS OFFICE.



REV	DESCRIPTION	REV	CK	DATE
0	Tender Issue	NM	JB	08.03.21

**SSL**  
Surfacing Standards Limited  
SPORTS PITCH CONSULTANTS

AUTHOR: NM

TITLE: Marple Hall School  
Refurbishment of Artificial Pitch  
Site Location

PROJECT: SSL2934	SCALE: 1:1250	SIZE: A1
DRAWING No: 01	REVISION: 00	