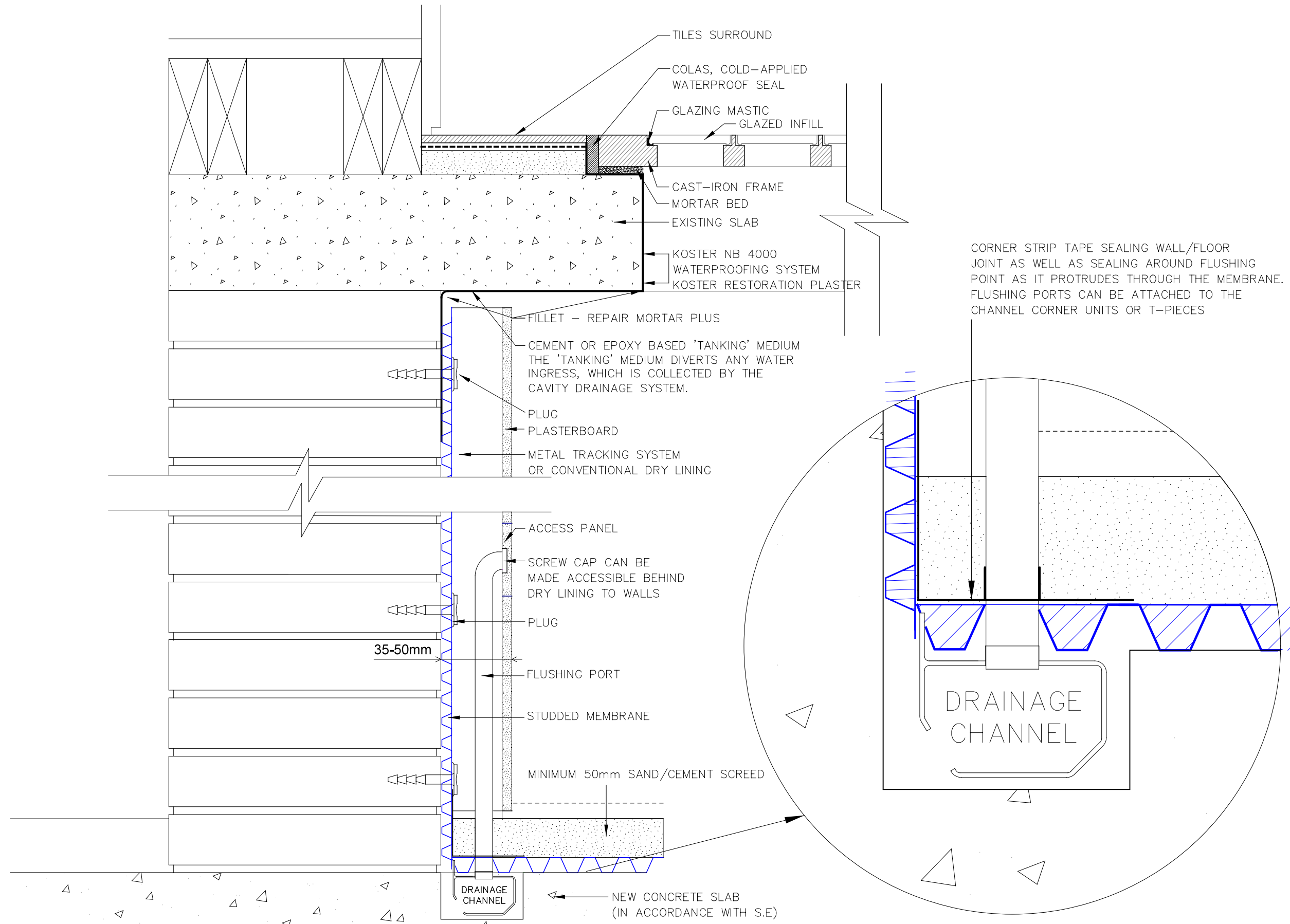
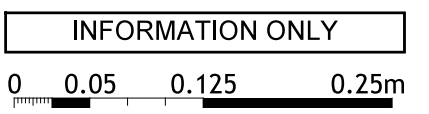


Dimensions are not to be scaled from this drawing.
 This drawing is based on current available information and should not be relied on as accurate measurements of usable space.
 This drawing is the property of the Colman Partnership Ltd. and Copyright is reserved by them. The drawing is issued on condition that it is not copied or disclosed by or to any unauthorised persons without the prior consent in writing of the Colman Partnership Ltd.



CORNER STRIP TAPE SEALING WALL/FLOOR JOINT AS WELL AS SEALING AROUND FLUSHING POINT AS IT PROTRUDES THROUGH THE MEMBRANE. FLUSHING PORTS CAN BE ATTACHED TO THE CHANNEL CORNER UNITS OR T-PIECES

DETAIL OF THE CHANNEL
 1:1.5@A3



colman architects

Project
 27 Connaught Street
 Connaught Village
 W2 2AY

Title
 Detail Cavity Membrane
 Waterproofing System

Scale 1:5 @ A3	1:2.5 @ A1	Date 28/01/21
Drawn by CC	Checked by Proj. Arch.	Checked By Manager
Drawing No. 21010 - A(52)01	Revision -	

The Colman Partnership Limited
 27 Harcourt Street
 London
 W1H 4HP

Telephone: 020 7535 2040
 Facsimile : 020 7535 2041
 email: projects@colmanarchitects.co.uk

www.colmanarchitects.co.uk