

MA RIA
GR AZIA
SAV IT O
ARCHITECTS

info@magrits.com

www.magrits.com

23th March 2020

SITE PHOTO

**74 and 74A Barnet Grove
LONDON E2 7BJ**

CONDITION 3a- Samples and details of external cladding



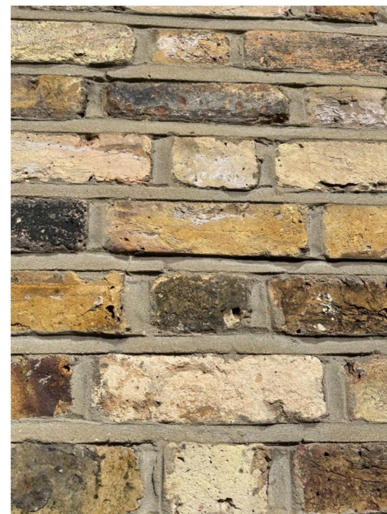
EXISTING: 74A Barnet Grove Entrance door opening to be converted in window. Ref bricks to be matched.



SAMPLE: 74 Barnet Grove rear elevation bricks to be reused for the external wall.



SAMPLE: Imperial weathered original London stock bricks.



EXISTING: weather struck pointing in the existing brickworks.

MA RIA
GR AZIA
SAV IT O
ARCHITECTS

info@magrits.com

www.magrits.com

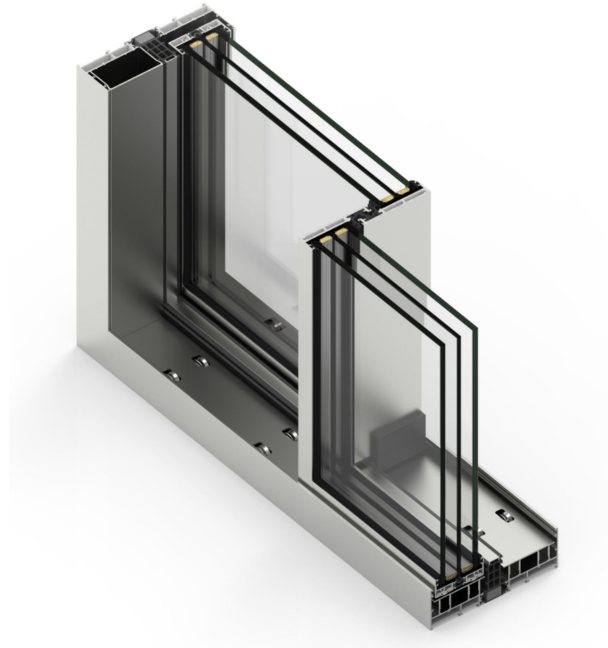
CONDITION 3b- Samples and drawings of fenestration

ANODIZING



*These colors are orientative and can present a difference by their chromatic variations of screen calibration.

SAMPLE: aluminium doors to be in Anodised finish steel look 1G.



SAMPLE: aluminium sliding doors frame.

CONDITION 3c- Drawings and details of entrances



EXISTING: 74 Barnet Grove Entrance door .



REFERENCE: Main entrance door in the neighbourhood.

MA RIA
GR AZIA
SAV IT O
ARCHITECTS

info@magrits.com

www.magrits.com

CONDITION 3d- Samples and details of roofing



EXISTING: roof tiles to be reuse if possible



SAMPLE: Natural slate tiles to match the existing



SAMPLE: Natural slate tiles to match the existing dimensions

CONDITION 3e- Details of any external rainwater goods, flues, grilles, louvres and vents



EXISTING: Black aluminium rainwater goods



SAMPLE: Half round gutter system black aluminium



SAMPLE: Standard circular downpipe black aluminium



SAMPLE: Standard hopper black aluminium