

CONTINUES ON SHEET 7

NOTE: * SIGNIFIES WILDLIFE VALUE. NOTE: THIS SCHEDULE IS FOR PLANNING AND INITIAL TENDER PURPOSES ONLY.

SPECIFICATION NOTES.

ESTABLISHMENT AND IMPLEMENTATION. No soil landscape operations to be undertaken during periods of prolonged waterlogging, frozen ground, adverse high or low temperature or drought.

1.01.01 All areas of public open space and/or tree planting to be protected from compaction A. To unrestricted larger services and/or root protection areas (RPA's) free areas post-constructed soil decompaction the soil will comprise a minimum of 20% subsoil and/or ground protection erected in accordance with BS 5837 (recommendations) sufficient to fully restrict/exclude access to these areas as a whole for the life of the developments construction period.

1.01.06 All trees above half standard size within public open space, verges or hard landscaped areas to be undergrounded.

1.01.07 All trees to be retained in accordance with Arboricultural Consultants Tree Survey and Assessment. NOTE: ALL PROTECTIVE FENCING TO BE IN ACCORDANCE WITH ARBORICULTURAL REPORT AND DRAWING

1.01.08 All plant material to be delivered to site must be a well established compact fibrous root system, free from pest and disease/ other defects, be healthy and display good form characteristics of species, trees to have a clearly defined central leader (unless multi stemmed) and be correct match to species and quantities specified on drawing.

1.01.09 All trees to be removed in accordance with Arboricultural Consultants Tree Survey and Assessment. NOTE: ALL PROTECTIVE FENCING TO BE IN ACCORDANCE WITH ARBORICULTURAL REPORT AND DRAWING

1.01.10 All trees to be removed in accordance with Arboricultural Consultants Tree Survey and Assessment. NOTE: ALL PROTECTIVE FENCING TO BE IN ACCORDANCE WITH ARBORICULTURAL REPORT AND DRAWING

1.01.11 All trees to be removed in accordance with Arboricultural Consultants Tree Survey and Assessment. NOTE: ALL PROTECTIVE FENCING TO BE IN ACCORDANCE WITH ARBORICULTURAL REPORT AND DRAWING

1.01.12 All trees to be removed in accordance with Arboricultural Consultants Tree Survey and Assessment. NOTE: ALL PROTECTIVE FENCING TO BE IN ACCORDANCE WITH ARBORICULTURAL REPORT AND DRAWING

1.01.13 All trees to be removed in accordance with Arboricultural Consultants Tree Survey and Assessment. NOTE: ALL PROTECTIVE FENCING TO BE IN ACCORDANCE WITH ARBORICULTURAL REPORT AND DRAWING

1.01.14 All trees to be removed in accordance with Arboricultural Consultants Tree Survey and Assessment. NOTE: ALL PROTECTIVE FENCING TO BE IN ACCORDANCE WITH ARBORICULTURAL REPORT AND DRAWING

1.01.15 All trees to be removed in accordance with Arboricultural Consultants Tree Survey and Assessment. NOTE: ALL PROTECTIVE FENCING TO BE IN ACCORDANCE WITH ARBORICULTURAL REPORT AND DRAWING

1.01.16 All trees to be removed in accordance with Arboricultural Consultants Tree Survey and Assessment. NOTE: ALL PROTECTIVE FENCING TO BE IN ACCORDANCE WITH ARBORICULTURAL REPORT AND DRAWING

1.01.17 All trees to be removed in accordance with Arboricultural Consultants Tree Survey and Assessment. NOTE: ALL PROTECTIVE FENCING TO BE IN ACCORDANCE WITH ARBORICULTURAL REPORT AND DRAWING

1.01.18 All trees to be removed in accordance with Arboricultural Consultants Tree Survey and Assessment. NOTE: ALL PROTECTIVE FENCING TO BE IN ACCORDANCE WITH ARBORICULTURAL REPORT AND DRAWING

1.01.19 All trees to be removed in accordance with Arboricultural Consultants Tree Survey and Assessment. NOTE: ALL PROTECTIVE FENCING TO BE IN ACCORDANCE WITH ARBORICULTURAL REPORT AND DRAWING

1.01.20 All trees to be removed in accordance with Arboricultural Consultants Tree Survey and Assessment. NOTE: ALL PROTECTIVE FENCING TO BE IN ACCORDANCE WITH ARBORICULTURAL REPORT AND DRAWING

1.01.21 All trees to be removed in accordance with Arboricultural Consultants Tree Survey and Assessment. NOTE: ALL PROTECTIVE FENCING TO BE IN ACCORDANCE WITH ARBORICULTURAL REPORT AND DRAWING

1.01.22 All trees to be removed in accordance with Arboricultural Consultants Tree Survey and Assessment. NOTE: ALL PROTECTIVE FENCING TO BE IN ACCORDANCE WITH ARBORICULTURAL REPORT AND DRAWING

1.01.23 All trees to be removed in accordance with Arboricultural Consultants Tree Survey and Assessment. NOTE: ALL PROTECTIVE FENCING TO BE IN ACCORDANCE WITH ARBORICULTURAL REPORT AND DRAWING

1.01.24 All trees to be removed in accordance with Arboricultural Consultants Tree Survey and Assessment. NOTE: ALL PROTECTIVE FENCING TO BE IN ACCORDANCE WITH ARBORICULTURAL REPORT AND DRAWING

1.01.25 All trees to be removed in accordance with Arboricultural Consultants Tree Survey and Assessment. NOTE: ALL PROTECTIVE FENCING TO BE IN ACCORDANCE WITH ARBORICULTURAL REPORT AND DRAWING

1.01.26 All trees to be removed in accordance with Arboricultural Consultants Tree Survey and Assessment. NOTE: ALL PROTECTIVE FENCING TO BE IN ACCORDANCE WITH ARBORICULTURAL REPORT AND DRAWING

1.01.27 All trees to be removed in accordance with Arboricultural Consultants Tree Survey and Assessment. NOTE: ALL PROTECTIVE FENCING TO BE IN ACCORDANCE WITH ARBORICULTURAL REPORT AND DRAWING

1.01.28 All trees to be removed in accordance with Arboricultural Consultants Tree Survey and Assessment. NOTE: ALL PROTECTIVE FENCING TO BE IN ACCORDANCE WITH ARBORICULTURAL REPORT AND DRAWING

1.01.29 All trees to be removed in accordance with Arboricultural Consultants Tree Survey and Assessment. NOTE: ALL PROTECTIVE FENCING TO BE IN ACCORDANCE WITH ARBORICULTURAL REPORT AND DRAWING

1.01.30 All trees to be removed in accordance with Arboricultural Consultants Tree Survey and Assessment. NOTE: ALL PROTECTIVE FENCING TO BE IN ACCORDANCE WITH ARBORICULTURAL REPORT AND DRAWING

1.01.31 All trees to be removed in accordance with Arboricultural Consultants Tree Survey and Assessment. NOTE: ALL PROTECTIVE FENCING TO BE IN ACCORDANCE WITH ARBORICULTURAL REPORT AND DRAWING

1.01.32 All trees to be removed in accordance with Arboricultural Consultants Tree Survey and Assessment. NOTE: ALL PROTECTIVE FENCING TO BE IN ACCORDANCE WITH ARBORICULTURAL REPORT AND DRAWING

LEGEND:

HARD SURFACES, GATES AND ENCLOSURE REFER TO HARD LANDSCAPE DRAWINGS FOR DETAILS. (BDG DRAWING Nos)

PROPOSED STANDARD TREE POSITION

PROPOSED HEDGE PLANTING NOTE: To be managed as maximum height 600mm

PROPOSED SHRUB PLANTING

CLIMBERS AND SPOT PLANTS

PROPOSED GRASS AREA GENERAL ANEMITY TURF FULLY TREATED AND CULTIVATED

Perennial Ryegrass Lolium perenne
Slender creeping red fescue Festuca rubra Litoralis
Strong creeping red fescue Festuca rubra rubra
Smooth stalked meadowgrass Festuca rubra Commutata
Brown top bent Poa pratensis
Agrostis capillaris

ROOT BARRIER. REFER TO ITEM 2.01.01+3.01.01 WITH SPECIFICATION NOTES.

EXISTING VEGETATION (RETAINED) To be retained in accordance with Arboricultural Consultants Tree Survey and Assessment. NOTE: ALL PROTECTIVE FENCING TO BE IN ACCORDANCE WITH ARBORICULTURAL REPORT AND DRAWING

EXISTING VEGETATION (REMOVED) To be removed in accordance with Arboricultural Consultants Tree Survey and Assessment.

LIGHTING COLUMNS

NOTE: ALL STREET TREE MANAGEMENT IS PART OF THE MANAGEMENT COMPANYS RESPONSIBILITY INCLUDING ANY TREE/CROWN ENCROACHMENT WITHIN 1.0M OF ANY LIGHTING COLUMNS

SCALE 1:250 (Meters to cm)

0 2.5 5 10 15 20
0 1.0cm 2.0cm 4.0cm 6.0cm 8.0cm

Architect

BDG DESIGN [SOUTH] Ltd
25 Southway, Colchester
Essex CO2 7BA
Tel: 01206 261496
Fax: 01206 219621
Email: BDG_enquiries@bdg-design.co.uk

BDG DESIGN PROJECT REF: 20025

Bellway
Bellway Homes (Essex) Division
Bellway House, 1 Cunard Square, Townfield Street, Chelmsford, Essex CM1 1AQ
Tel: 01245 259989 Fax: 01245 259996

RIDLEY'S ORCHARD
OLD NORWICH ROAD
WHITTON, SUFFOLK

SOFT LANDSCAPE
PROPOSALS
sheet 4 of 9

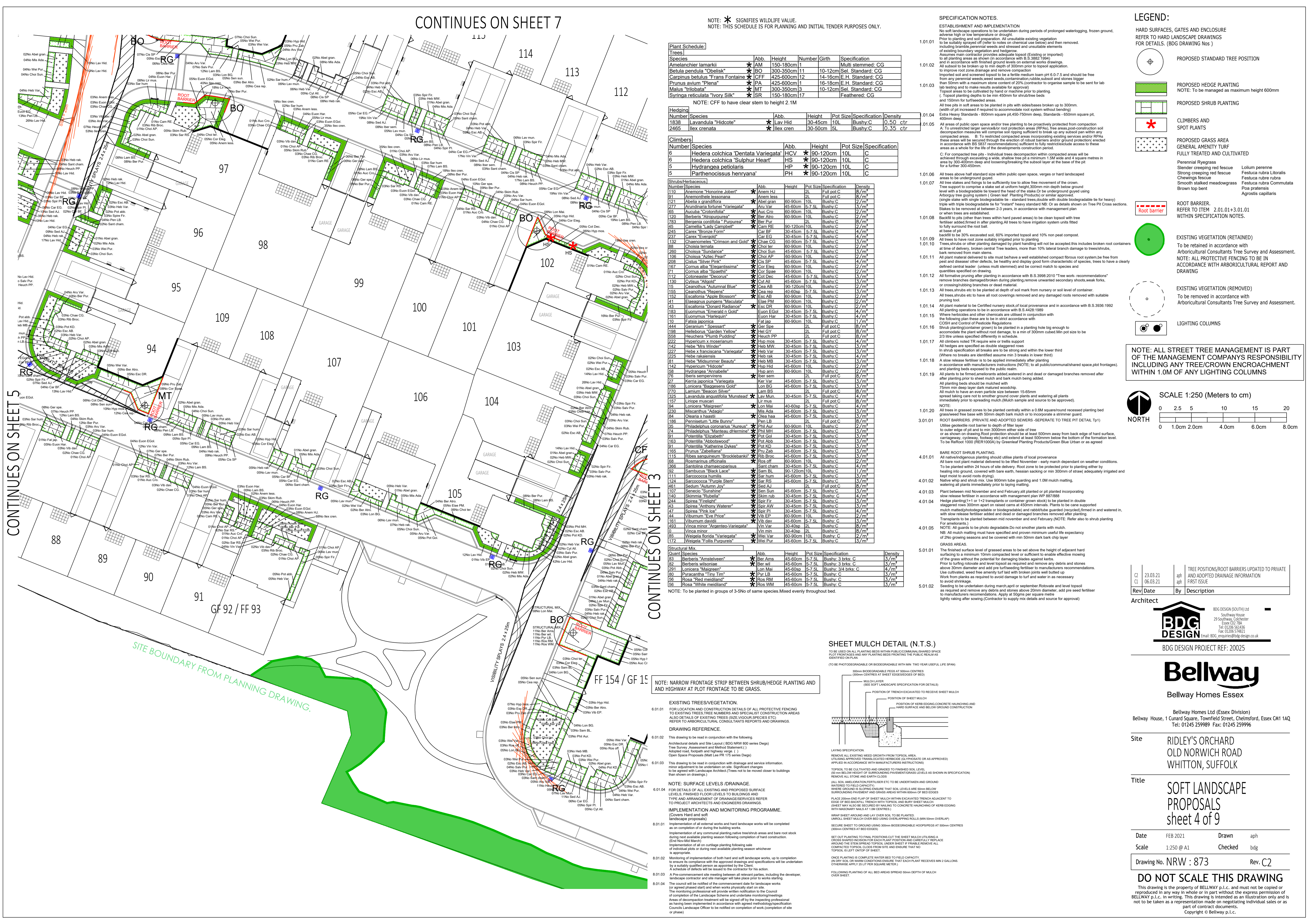
Date FEB 2021 Drawn aph
Scale 1:250 @ A1 Checked bdg

Drawing No. NRW : 873 Rev. C2

DO NOT SCALE THIS DRAWING
This drawing is the property of BELLWAY p.l.c. and must not be copied or reproduced in any way in whole or in part without the express permission of BELLWAY p.l.c. in writing. This drawing is intended as an illustration only and is not to be taken as a representation made on negotiating individual sales or part of contract documents.
Copyright © Bellway p.l.c.

CONTINUES ON SHEET 5

CONTINUES ON SHEET 3



Plant Schedule table with columns: Species, Abb., Height, Number, Girth, Specification. Includes plants like Amelanchier lamarckii, Betula pendula 'Ombelisk', and Syringa reticulata 'Ivory Silk'.

Hedging table with columns: Number, Species, Abb., Height, Pot Size, Specification, Density. Includes Hedging 1838 Lavandula 'Hidcote' and Hedging 2465 Ilex crenata.

Climbers table with columns: Number, Species, Abb., Height, Pot Size, Specification. Includes Hedera colchica 'Dentata Variegata' and Hedera colchica 'Sulphur Heart'.

Shrub/Herbaceous table with columns: Number, Species, Abb., Height, Pot Size, Specification, Density. Includes Anemone 'Honoring Jobert' and Abelia x grandiflora.

Structural Mix table with columns: Quant, Species, Abb., Height, Pot Size, Specification, Density. Includes Berberis 'Amstelvelven', Berberis wilsoniae, and Rosa 'White meidland'.

Structural Mix table with columns: Quant, Species, Abb., Height, Pot Size, Specification, Density. Includes Berberis 'Amstelvelven', Berberis wilsoniae, and Rosa 'White meidland'.

NOTE: To be planted in groups of 3-5No of same species. Mixed evenly throughout bed.

SHEET MULCH DETAIL (N.T.S.)

TO BE USED ON ALL PLANTING BEDS WITHIN PUBLIC/COMMERCIAL/SHARED SPACE. PLOT FOOTINGS AND ANY PLANTING BEDS FRONTING THE PUBLIC REALM AS IDENTIFIED ON PLAN.



LAYING SPECIFICATION. REMOVE ALL EXISTING WEED GROWTH FROM TOPSOIL AREA. UTILISING APPROVED TRANSLUCENT HERBICIDE (GLYPHOSATE OR AS APPROVED).

APPLIED IN ACCORDANCE WITH MANUFACTURERS INSTRUCTIONS. TOPSOIL TO BE CULTIVATED AND GRADED TO FINISHED G/L LEVEL. 100mm BELOW HEIGHT OF SURROUNDING PAVEMENT/GRAVELS LEVELS AS SHOWN IN SPECIFICATION.

REMOVE ALL STONE AND CLAY CLODS. (ALL SOIL AMELIORATION/FERTILISER ETC TO BE UNDERTAKEN AND GROUND WATERED TO FIELD CAPACITY).

WHERE GROUND IS SLOPING ENSURE THAT SOIL LEVELS ARE 50mm BELOW SURROUNDING PAVEMENT AND GRASS AREAS WITHIN 600mm OF BED EDGES.

USE 200mm DEEP FLAP OF SHEET MULCH WITH EXCAVATED TRENCH ADJACENT TO EDGE OF BED BACKFILL TRENCH WITH TOPSOIL AND BURY SHEET MULCH. SHEET MULCH ALSO BE SECURED TO CONCRETE/HANDLING OF KERB EDGING WITH MASONRY NAILS AT 1.0M CENTRES.

WRAP SHEET AROUND AND LAY OVER SOIL TO BE PLANTED. UNROLL SHEET MULCH OVER BED USING CHAINING ROLLS (MIN 50mm OVERLAP). SECURE SHEET TO GROUND USING 300mm BIODEGRADABLE HOPSPEARS AT 500mm CENTRES (300mm CENTRE AT BED EDGES).

SET OUT PLANTING TO FINAL POSITIONS. CUT THE SHEET MULCH UTILISING A (EN) NO. 10 HOLE PUNCH FOR EACH PLANT POSITION AND CAREFULLY RE-PLACE AROUND THE STEM SPREAD TOPSOIL UNDER SHEET IF FEASIBLE REMOVE ALL COMPACTED TOPSOIL CLODS FROM SITE AND ENSURE THAT NO TOPSOIL IS LEFT OUT OF SHEET.

ONCE PLANTING IS COMPLETE WATER BED TO FIELD CAPACITY. UNROLL 50% OF MESH COVERING OVER BEDS TO PROTECT PLANTS. OTHERWISE APPLY 25 LITRE PER SQUARE METRE.

FOLLOWING PLANTING OF ALL BED AREAS SPREAD 50mm DEPTH OF MULCH OVER SHEET.

EXISTING TREES/VEGETATION.

FOR LOCATION AND CONSTRUCTION DETAILS OF ALL PROTECTIVE FENCING TO EXISTING TREES, TREE NUMBERS AND SPECIALIST CONSTRUCTION AREAS ALSO DETAILS OF EXISTING TREES (SPECIES, SPECIES ETC) REFER TO ARBORICULTURAL CONSULTANTS REPORTS AND DRAWINGS.

DRAWING REFERENCE.

0.01.01 This drawing to be read in conjunction with the following: Architectural details and Site Layout (BDG NRW 800 series Drawings) Tree Survey Assessment and Method Statement (1) Adopted road, footpath and highway verge () Open Space Proposals (Mott MacDonald PR 175 series Drawings)

0.01.02 This drawing to be read in conjunction with drainage and service information. minor adjustment to be undertaken on site. Significant changes to be agreed with Landscape Architect (Trees not to be moved closer to buildings than shown on drawings)

0.01.03 NOTE: SURFACE LEVELS DRAINAGE. FOR DETAILS OF ALL EXISTING AND PROPOSED SURFACE LEVELS, FINISHED FLOOR LEVELS TO BUILDINGS AND TYPE AND ARRANGEMENT OF DRAINAGE SERVICES REFER TO PROJECT ARCHITECTS AND ENGINEERS DRAWINGS.

0.01.04 IMPLEMENTATION AND MONITORING PROGRAMME. (Covers Hard and soft landscape proposals)

0.01.05 Implementation of all external works and hard landscape works will be completed on a completion of or during the building works. Implementation of any communal planting within tree/shrub areas and bare root stock during next available planting season following completion of hard construction (End Nov-Mid March)

0.01.06 Implementation of all on-curtage planting following sale of individual plots or during next available planting season whichever is appropriate.

0.01.07 Monitoring of implementation of both hard and soft landscape works, up to completion to ensure compliance with the approved drawings and specifications will be undertaken by a suitably qualified person as appointed by the Client. A detailed report will be issued to the contractor for his action.

0.01.08 A Pre-construction site meeting between all relevant parties, including the developer, landscape contractor and site manager will take place prior to works starting. The Council will be notified of the commencement date for landscape works.

0.01.09 The monitoring professional will provide written notification to the Council of completion of the Landscape Scheme and undertake monitoring meetings. Areas of decompaction treatment will be signed off by the monitoring professional as having been implemented in accordance with agreed methodology/specification. Councils Landscape Officer to be notified on completion of work (completion of site or phase)

SITE BOUNDARY FROM PLANNING DRAWING.

GF 92 / FF 93

FF 154 / GF 15

VEGETATION SPLAYS 2.4 x 2.2m

VEGETATION SPLAYS 2.4 x 2.2m

VEGETATION SPLAYS 2.4 x 2.2m

VEGETATION SPLAYS 2.4 x 2.2m

VEGETATION SPLAYS 2.4 x 2.2m

VEGETATION SPLAYS 2.4 x 2.2m

VEGETATION SPLAYS 2.4 x 2.2m

VEGETATION SPLAYS 2.4 x 2.2m