

CONTINUES ON SHEET 8

NOTE: \* SIGNIFIES WILDLIFE VALUE. NOTE: THIS SCHEDULE IS FOR PLANNING AND INITIAL TENDER PURPOSES ONLY.

Plant Schedule table with columns: Trees, Species, Abb., Height, Number, Girth, Specification. Includes species like Amelanchier lamarckii, Betula pendula, Carpinus betulus, etc.

Hedging table with columns: Number, Species, Abb., Height, Pot Size, Specification, Density. Includes Lavandula 'Hidcote' and Ilex crenata.

Climbers table with columns: Number, Species, Abb., Height, Pot Size, Specification. Includes Hedera colchica and Parthenocissus vitacea.

Shrub/Herbaceous table with columns: Number, Species, Abb., Height, Pot Size, Specification, Density. Includes Anemone 'Honoring Jobert', Armonia leucostachya, etc.

Structural Mix table with columns: Number, Species, Abb., Height, Pot Size, Specification, Density. Includes Berberis 'Amstelvelen', Berberis wilsoniae, etc.

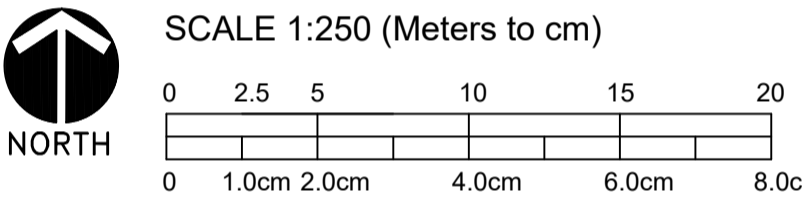
Structural Mix table with columns: Number, Species, Abb., Height, Pot Size, Specification, Density. Includes Berberis 'Amstelvelen', Berberis wilsoniae, etc.

NOTE: To be planted in groups of 3-5. No of same species mixed evenly throughout bed.

SPECIFICATION NOTES

- ESTABLISHMENT AND IMPLEMENTATION: No soil landscape operations to be undertaken during periods of prolonged waterlogging... PROPOSED STANDARD TREE POSITION... PROPOSED HEDGE PLANTING... PROPOSED SHRUB PLANTING... CLIMBERS AND SPOT PLANTS... PROPOSED GRASS AREA... ROOT BARRIER... EXISTING VEGETATION (RETAINED)... EXISTING VEGETATION (REMOVED)... LIGHTING COLUMNS... SCALE 1:250 (Meters to cm)... TREE POSITIONS/ROOT BARRIERS UPDATED TO PRIVATE AND ADDED DRAINAGE INFORMATION... DATE: 23.03.21... 06.03.21... BY: [Signature]... DESCRIPTION: [Signature]

NOTE: ALL STREET TREE MANAGEMENT IS PART OF THE MANAGEMENT COMPANYS RESPONSIBILITY INCLUDING ANY TREE/CROWN ENCROACHMENT WITHIN 1.0M OF ANY LIGHTING COLUMNS



DATE: 23.03.21, 06.03.21 BY: [Signature] DESCRIPTION: [Signature]

BDG DESIGN logo and contact information: BDG DESIGN (SOUTH) Ltd, Southway House, 25 Southway, Colchester, Essex CO2 7BA, Tel: 01206 261486, Fax: 01206 218211, Email: bdc\_enquiries@bdg-design.co.uk

BDG DESIGN PROJECT REF: 20025

Bellway logo and Bellway Homes Essex Division contact information: Bellway House, 1 Cunard Square, Townfield Street, Chelmsford, Essex CM1 1AQ, Tel: 01245 259989, Fax: 01245 259996

Site: RIDLEY'S ORCHARD, OLD NORWICH ROAD, WHITTON, SUFFOLK

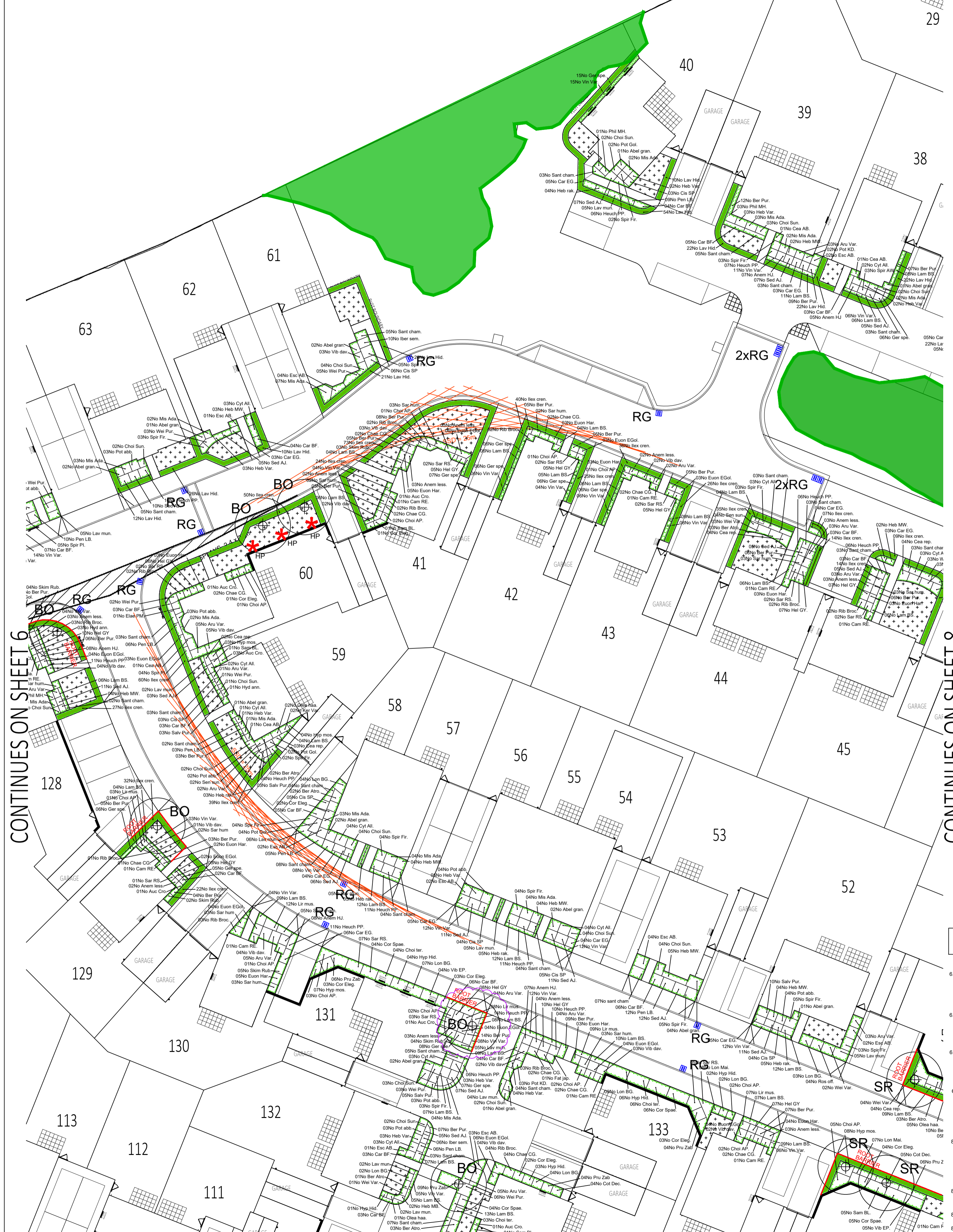
Title: SOFT LANDSCAPE PROPOSALS sheet 7 of 9

Date: FEB 2021, 1:250 @ A1, Drawing No. NRW : 876, Rev. C2

Do NOT SCALE THIS DRAWING. This drawing is the property of BELLWAY p.l.c. and must not be copied or reproduced in any way in whole or in part without the express permission of BELLWAY p.l.c. in writing.

Copyright © Bellway p.l.c.

CONTINUES ON SHEET 6



CONTINUES ON SHEET 3

CONTINUES ON SHEET 8

CONTINUES ON SHEET 3

NOTE: NARROW FRONTAGE STRIP BETWEEN SHRUB/HEDGE PLANTING AND HIGHWAY AT PLOT FRONTAGE TO BE GRASS.

- EXISTING TREES/VEGETATION: FOR LOCATION AND CONSTRUCTION DETAILS OF ALL PROTECTIVE FENCING TO EXISTING TREES... DRAWING REFERENCE: THIS DRAWING TO BE READ IN CONJUNCTION WITH THE FOLLOWING: Architectural details and Site Layout (BDG NRW 800 series Drawings) Tree Survey Assessment and Method Statement (1) Adopted road, footpath and highway way ( ) Open Space Proposals (Mott MacDonald PR 175 series Drawings) NOTE: SURFACE LEVELS/DRAINAGE: FOR DETAILS OF ALL EXISTING AND PROPOSED SURFACE LEVELS, FINISHED FLOOR LEVELS TO BUILDINGS AND TYPE AND ARRANGEMENT OF DRAINAGE SERVICES REFER TO PROJECT ARCHITECTS AND ENGINEERS DRAWINGS. IMPLEMENTATION AND MONITORING PROGRAMME: (Covers Hard and soft landscape proposals) 6.01.01 Implementation of all external works and hard landscape works will be completed on an completion of or during the building works... 6.01.02 Monitoring of implementation of both hard and soft landscape works, up to completion to ensure compliance with the approved drawings and specifications will be undertaken by a suitably qualified person as appointed by the Client... 6.01.03 A Pre-implementation site meeting including all relevant parties, including the developer, landscape contractor and site manager will take place prior to works starting... 6.01.04 The Council will be notified of the commencement date for landscape works.

SHEET MULCH DETAIL (N.T.S.)

TO BE USED ON ALL PLANTING BEDS WITHIN PUBLIC/COMMERCIAL/SHARED SPACE TO BE USED FOR ALL PLANTING BEDS FRONTING THE PUBLIC ROAD AS IDENTIFIED ON PLAN.

(TO BE PHOTOGRAPHED OR BIODEGRADABLE WITH MIN 2 YEAR USEFUL LIFE SPAN)

300mm BIODEGRADABLE PRECAST AT 500mm CENTRES

300mm CENTRES AT BED EDGES (SEE SPECIFICATION FOR DETAILS)

MULCH LAYER (SEE SOFT LANDSCAPE SPECIFICATION FOR DETAILS)

POSITION OF SHEET MULCH

POSITION OF TRENCH EXCAVATED TO RECEIVE SHEET MULCH

POSITION OF KERB EDGING/CONCRETE HAUNCHING AND HARD SURFACE AND BELOW GROUND CONSTRUCTION

LAYING SPECIFICATION: REMOVE ALL EXISTING WEED GROWTH FROM TOPSOIL AREA. UTILISING APPROVED TRANSLUCENT HERBICIDE (GLYPHOSATE OR AS APPROVED) APPLIED IN ACCORDANCE WITH MANUFACTURERS INSTRUCTIONS.

TOPSOIL TO BE CULTIVATED AND GRADED TO FINISHED SOIL LEVEL (50mm BELOW HEIGHT OF SURROUNDING PAVEMENT/GRAVEL LEVELS AS SHOWN IN SPECIFICATION) REMOVE ALL STONE AND CLUMP CLODS

(ALL SOIL AMELIORATION/FERTILISER ETC TO BE UNDERTAKEN AND GROUND WATERED TO FIELD CAPACITY)

APPLY 200mm DEEP FLAT TOP SHEET MULCH WITH EXCAVATED TRENCH ADJACENT TO EDGE OF BED BACKFILL TRENCH WITH TOPSOIL AND BURY SHEET MULCH

TOPSOIL MUST BE SECURED BY REINFORCING TO CONCRETE HAUNCHING OR KERB EDGING WITH MASONRY NAILS AT 1.0M CENTRES

WRAP SHEET AROUND AND LAY OVER SOIL TO BE PLANTED. UNROLL SHEET OVER BED USING 50mm OVERLAP

SECURE SHEET TO GROUND USING 300mm BIODEGRADABLE HOPS/PESPEGS AT 500mm CENTRES (300mm CENTRES AT BED EDGES)

SET OUT PLANTING TO FINAL POSITIONS OUT THE SHEET MULCH UTILISING A 100mm SOIL OR HARD CONDITIONS (MIN 50mm OVERLAP) AROUND THE STEM SPREAD TOPSOIL UNDER SHEET IF FRAGILE REMOVE ALL COMPLETED TOPSOIL CLODS FROM SITE AND ENSURE THAT ALL TOPSOIL IS LEFT OUTSIDE OF SHEET.

ONCE PLANTING IS COMPLETE WATER BED TO FIELD CAPACITY. REMOVE SOIL OR HARD CONDITIONS FROM BED USING 50mm OVERLAP OTHERWISE APPLY 25 LITRE SQUARE METRE

FOLLOWING PLANTING OF ALL BED AREAS SPREAD 50mm DEPTH OF MULCH OVER SHEET.