



NOTE: * SIGNIFIES WILDLIFE VALUE.
NOTE: THIS SCHEDULE IS FOR PLANNING AND INITIAL TENDER PURPOSES ONLY.

Plant Schedule						
Species	Abb.	Height	Number	Girth	Specification	
Amelanchier lamarckii	AM	150-180cm	1		Multi stemmed; CG	1.01.01
Betula pendula "Obelisk"	BO	300-350cm	11	10-12cm	Sel. Standard; CG	1.01.02
Carpinus betulus "Frans Fontaine"	CF	425-600cm	12	14-16cm	E.H. Standard; CG	
Prunus avium "Plena"	PA	425-600cm	1	16-18cm	E.H. Standard; CG	1.01.03
Malus "trilobata"	MT	300-350cm	3	10-12cm	Sel. Standard; CG	
Syringa reticulata "Ivory Silk"	SR	150-180cm	17		Feathered; CG	

NOTE: CFF to have clear stem to height 2.1M

Hedging						
Number	Species	Abb.	Height	Pot Size	Specification	Density
1838	Lavandula "Hidocote"	LAV	120	30-45cm	10L	Bushy; C
2465	Ilex crenata	ILC	120	30-50cm	10L	Bushy; C

Climbers						
Number	Species	Abb.	Height	Pot Size	Specification	
6	Hedera colchica "Dentata Variegata"	HCV	90-120cm	10L	C	
6	Hedera colchica "Sulphur Heart"	HS	90-120cm	10L	C	
5	Hydrangea petiolaris	HP	90-120cm	10L	C	
5	Parthenocissus henryana	PH	90-120cm	10L	C	

Shrub/Berberis						
Number	Species	Abb.	Height	Pot Size	Specification	Density
110	Anemone "Honoring Jobert"	ANJ	2L	Full pot.C	8/m²	
91	Arenaria lessiana	AL	2L	Full pot.C	8/m²	
121	Abelia x grandiflora	AG	60-90cm	10L	Bushy; C	2/m²
127	Andromeda fortunei "Variegata"	AV	45-60cm	5.7.5L	Bushy; C	3/m²
65	Aucuba "Crocodilia"	AC	60-90cm	10L	Bushy; C	2/m²
220	Berberis "Atropurpurea"	BA	60-90cm	10L	Bushy; C	2/m²
783	Bergenia cordifolia "Purpurea"	BP	2L	Bushy; C	8/m²	
45	Camellia "Lady Campbell"	CA	60-120cm	10L	Bushy; C	2/m²
245	Carex "Bronze Form"	CB	30-45cm	5.7.5L	Bushy; C	4/m²
237	Carex "Evergold"	CE	30-45cm	5.7.5L	Bushy; C	4/m²
132	Chamaejasme "Crimson and Gold"	CA	60-90cm	5.7.5L	Bushy; C	2/m²
88	Chiosia tenuis	CT	60-90cm	10L	Bushy; C	2/m²
200	Choisya "Sundance"	CS	45-60cm	5.7.5L	Bushy; C	3/m²
108	Choisya "Aztec Pearl"	CA	60-90cm	10L	Bushy; C	2/m²
208	Cistus "Silver Snow"	CI	45-60cm	5.7.5L	Bushy; C	3/m²
167	Cornus alba "Eleaentissima"	CA	60-90cm	10L	Bushy; C	2/m²
71	Cornus alba "Spatha"	CS	60-90cm	10L	Bushy; C	2/m²
112	Colonnaster "Robur"	CR	45-60cm	5.7.5L	Bushy; C	3/m²
130	Cydonia "Alight"	CA	45-60cm	5.7.5L	Bushy; C	3/m²
15	Ceanothus "Autumnal Blue"	CA	90-120cm	10L	Bushy; C	2/m²
45	Ceanothus "Regina"	CR	40-60cm	5.7.5L	Bushy; C	2/m²
183	Eucalyptus "Eucalyptus"	EU	30-45cm	5.7.5L	Bushy; C	4/m²
161	Eucalyptus "Harlequin"	EU	30-45cm	5.7.5L	Bushy; C	4/m²
10	Fatsia japonica	FA	60-90cm	10L	Bushy; C	2/m²
444	Geranium "Saxatilis"	GA	2L	Full pot.C	8/m²	
198	Hebe "Mrs Winder"	HW	30-45cm	5.7.5L	Bushy; C	3/m²
558	Heuchera "Plumb Pudding"	HP	2L	Full pot.C	8/m²	
222	Hypericum x roseum	HR	30-45cm	5.7.5L	Bushy; C	4/m²
142	Hebe "Mrs Winder"	HW	30-45cm	5.7.5L	Bushy; C	3/m²
227	Hebe x franciscana "Variegata"	HFB	30-45cm	5.7.5L	Bushy; C	3/m²
225	Hebe rakaiensis	HR	30-45cm	5.7.5L	Bushy; C	4/m²
91	Hebe "Maurice Beaufort"	HBF	30-45cm	5.7.5L	Bushy; C	3/m²
142	Hypericum "Hidocote"	HY	45-60cm	10L	Bushy; C	2/m²
58	Hydrangea "Annabelle"	HY	60-90cm	10L	Bushy; C	2/m²
76	Iris sibirica	IR	2L	Full pot.C	8/m²	
27	Kerria japonica "Variegata"	KV	45-60cm	5.7.5L	Bushy; C	3/m²
188	Lonicera "Baggesens Gold"	LB	45-60cm	5.7.5L	Bushy; C	3/m²
770	Lanium "Beacon Silver"	LS	2L	Full pot.C	8/m²	
325	Lavandula angustifolia "Munstead"	LAM	30-45cm	5.7.5L	Bushy; C	4/m²
157	Liriodendron muscari	LM	2L	Full pot.C	8/m²	
84	Lonicera "Magreent"	LM	40-60cm	5.7.5L	Bushy; C	4/m²
290	Miscanthus "Adagio"	MA	45-60cm	5.7.5L	Bushy; C	3/m²
186	Pennisetum "Little Bunny"	PN	2L	Full pot.C	8/m²	
35	Philadelphus "Aureus"	PA	60-90cm	10L	Bushy; C	2/m²
17	Philadelphus "Mantique d'hermine"	PH	60-90cm	10L	Bushy; C	3/m²
91	Potentilla "Elizabeth"	PT	30-45cm	5.7.5L	Bushy; C	3/m²
163	Potentilla "Abbotswood"	PA	30-45cm	5.7.5L	Bushy; C	3/m²
91	Potentilla "Katherine Dykes"	PD	30-45cm	5.7.5L	Bushy; C	3/m²
165	Prunus "Zabelliana"	PZ	45-60cm	5.7.5L	Bushy; C	3/m²
115	Ribes sanguinum "Brockelbankii"	RB	45-60cm	5.7.5L	Bushy; C	3/m²
98	Rosmarinus "Eclatant"	RS	45-60cm	10L	Bushy; C	3/m²
366	Santolina chamaecyparissus	SC	30-45cm	5.7.5L	Bushy; C	4/m²
92	Sarcococca "Black Lace"	SBL	90-120cm	10L	Bushy; C	1/m²
111	Sarcococca humilis	SH	45-60cm	5.7.5L	Bushy; C	3/m²
124	Sarcococca "Purple Stem"	SP	45-60cm	5.7.5L	Bushy; C	3/m²
481	Sedum "Autumn Joy"	SA	2L	Full pot.C	8/m²	
107	Sedum "Sundshine"	SD	45-60cm	5.7.5L	Bushy; C	3/m²
140	Skimmia "Rubea"	SK	30-45cm	5.7.5L	Bushy; C	4/m²
244	Spiraea "Firelight"	SP	30-45cm	5.7.5L	Bushy; C	3/m²
43	Spiraea "Anthony Waterer"	SA	30-45cm	5.7.5L	Bushy; C	3/m²
47	Spiraea "Pink Prince"	SP	30-45cm	5.7.5L	Bushy; C	3/m²
44	Viburnum "Eve Price"	VB	60-90cm	10L	Bushy; C	2/m²
161	Viburnum davidii	VD	45-60cm	5.7.5L	Bushy; C	3/m²
493	Vinca minor "Aureo-Variegata"	VV	30-45cm	5.7.5L	Bushy; C	3/m²
0	Vinca minor	VV	30-45cm	5.7.5L	Bushy; C	3/m²
85	Weigelia florida "Variegata"	WF	60-90cm	10L	Bushy; C	2/m²
172	Weigelia "Folia Purpurea"	WP	45-60cm	5.7.5L	Bushy; C	3/m²

Structural Mix						
Quant	Species	Abb.	Height	Pot Size	Specification	Density
82	Berberis "Amstelvelen"	BA	45-60cm	5.7.5L	Bushy; 3 brks; C	3/m²
82	Berberis wilsoniana	BW	45-60cm	5.7.5L	Bushy; 3 brks; C	3/m²
291	London "Magreent"	LM	45-60cm	5.7.5L	Bushy; 3/4 brks; C	4/m²
80	Pyracantha "Trevi Tim"	PT	45-60cm	5.7.5L	Bushy; 3/4 brks; C	3/m²
56	Rosa "Red meidland"	RS	45-60cm	5.7.5L	Bushy; C	3/m²
172	Rosa "White meidland"	RW	45-60cm	5.7.5L	Bushy; C	3/m²

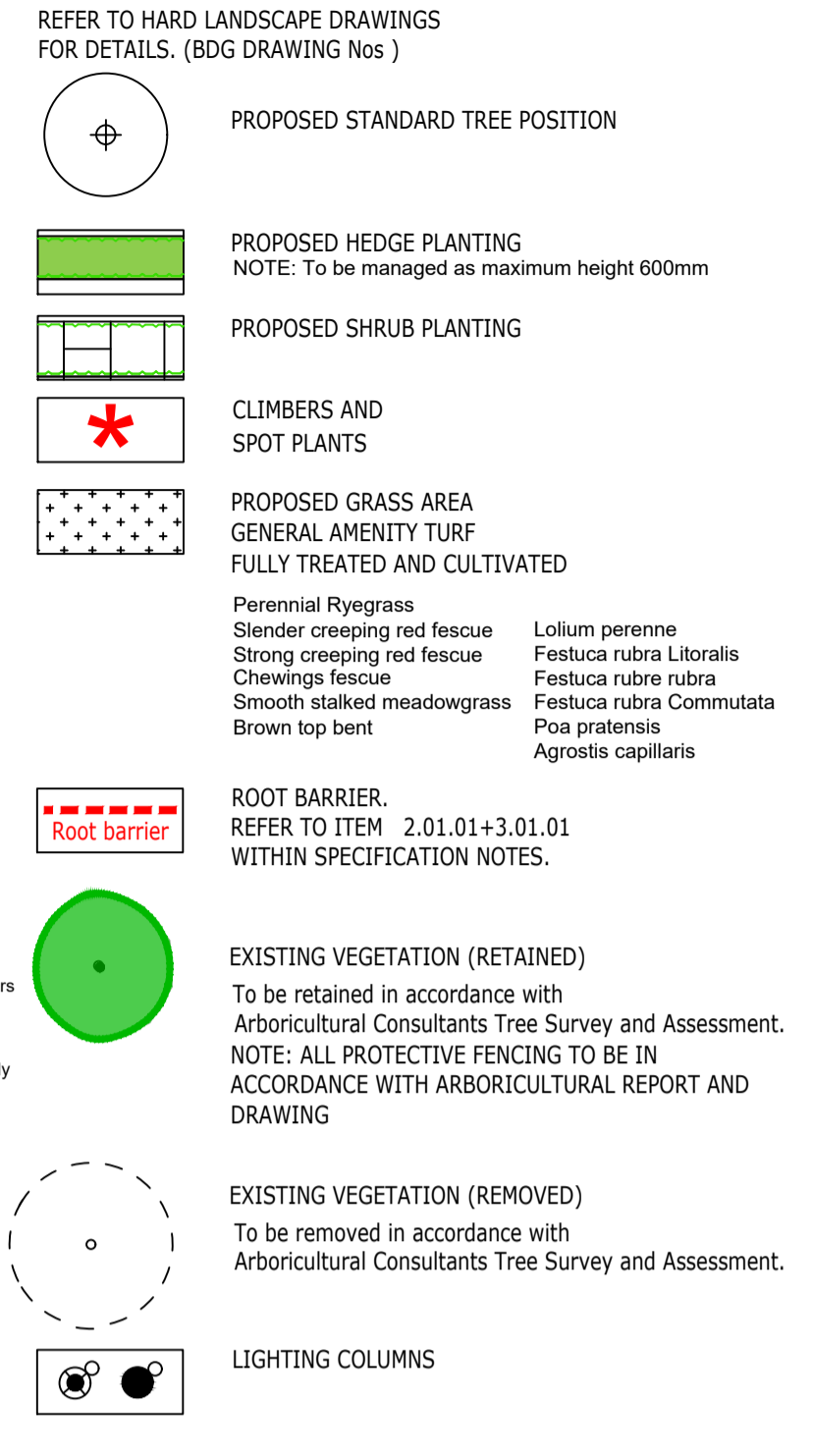
NOTE: To be planted in groups of 3-5 No of same species. Mixed evenly throughout bed.

SPECIFICATION NOTES
ESTABLISHMENT AND IMPLEMENTATION
No soft landscape operations to be undertaken during periods of prolonged watering, frozen ground, adverse high or low temperature or drought.
Prior to planting and soil preparation. All unsuitable existing vegetation to be suitably sprayed off (refer to notes on chemical use below) and then removed, including tree, perennial weeds and stressed and unstable elements of existing boundary vegetation and hedgerow.
As shown on drawings. All planting areas to be prepared to a depth of 150mm below ground level to all planting areas as shown (in accordance with B.S.3882:1994) and in accordance with finished ground levels on external works drawings.
All soil to be broken up to min depth of 300mm prior to topsoil application.
To improve root zone drainage and remove compaction
Imported soil and screened topsoil to be a fertile medium loam pH 6.0-7.5 and should be free from any perennial weeds, weed seeds, contamination, rubble, subsoil and stones bigger than 50mm with a maximum stone content of 20% (contractor to organise sample to be sent for lab testing and to make results available for approval).
Topsoil areas to be cultivated by hand or machine prior to planting.
Topsoil planting depth to be min 450mm for shrub beds and 150mm for turfseeded areas.
All tree pits in soft areas to be planted in pits with sides/bases broken up to 300mm (width of pit increased if required to accommodate root system without bending).
Extra Heavy Standards - 800mm square pit, 450-750mm deep. Standards - 650mm square pit, 400mm deep.

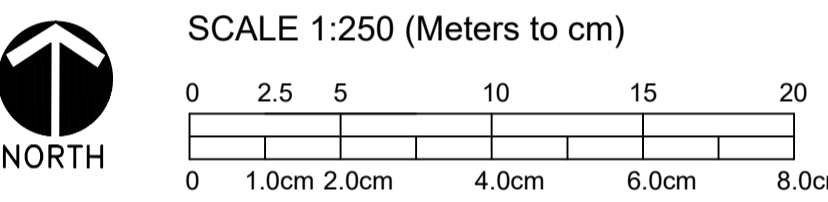
1.01.04 All areas of public open space and/or tree planting to be proactively protected from compaction A. To unrestricted larger services and/or protection areas (RPAs), free areas post-construction soil decompaction measures will comprise stockpiling sufficient to break up any subsoil pan within any compacted areas. B. To restricted compacted areas incorporating existing services and/or RPAs these areas will be excavated through the erection of robust barriers and/or ground protection erected in accordance with BS 5837 recommendations) sufficient to fully restrict/exclude access to these areas as a whole for the life of the development construction period.
C. For compacted tree pits - Individual trees/compaction within compacted areas will be achieved through excavating a wide, shallow tree pit at a minimum 1.5M wide and 4 square metres in area by 300-600mm deep and loosening/breaking the subsoil layer at the base of the pit for a further 300-450mm.

1.01.06 All trees above half standard size within public open space, verges or hard landscaped areas to be underground girdled.
All tree stakes and fuses to be sufficiently low to allow free movement of the crown. Tree support to comprise a stake set at uniform height, 300mm min depth below ground level with a biodegradable tie toward the head of the stake. Or be underground girdling using Arborcure prying system (Green Leaf Planting Products) or similar approved. (single stake with single biodegradable tie - standard trees double with double biodegradable tie for heavy) pipe with triple biodegradable tie - heavy standard NB. Or as details shown on Tree Pit Cross sections. Stakes to be removed at between 2-3 years, in accordance with management plan or when trees are established.
1.01.08 Backfill to pits (other than trees with hard paved areas) to be clean topsoil to which fertilizer added/formed in after planting. All trees to have irrigation systems units fitted to fully surround the root ball.
At base of pit backfill to be 30% excavated soil, 60% imported topsoil and 10% non peat compost.
1.01.09 All trees to have root zone stability triggered to planting.
1.01.10 Trees, shrubs or other planting damaged by plant handling will not be accepted this includes broken root containers at time of delivery. Broken central Tree leaders, more than 10% lateral branch damage to trees/shrubs, bark removed from stems.
1.01.11 All plant material delivered to site must be a well established compact fibrous root system, be free from pest and disease, be healthy and of good characteristics of species, trees to have a clearly defined central leader (unless multi stemmed) and be correct match to species and quantities specified on drawing.
1.01.12 All plant material to be Certified nursery stock, of local provenance and in accordance with B.S.3988:2010 "Tree work recommendations" remove branches/damaged/broken during planting/ remove unwanted secondary shoots, weak forks, or crossing/breaking branches or dead material.
1.01.13 All trees/shrubs to be planted at depth of soil mark from nursery or soil level of container.
All trees/shrubs etc to have all root coverings removed and any damaged roots removed with suitable pruning tool.
1.01.14 All plant material to be Certified nursery stock, of local provenance and in accordance with B.S.3988:2010 "Tree work recommendations" remove branches/damaged/broken during planting/ remove unwanted secondary shoots, weak forks, or crossing/breaking branches or dead material.
1.01.15 All trees/shrubs etc to be planted at depth of soil mark from nursery or soil level of container.
All trees/shrubs etc to have all root coverings removed and any damaged roots removed with suitable pruning tool.
1.01.16 All plant material to be Certified nursery stock, of local provenance and in accordance with B.S.3988:2010 "Tree work recommendations" remove branches/damaged/broken during planting/ remove unwanted secondary shoots, weak forks, or crossing/breaking branches or dead material.
1.01.17 All trees/shrubs etc to be planted at depth of soil mark from nursery or soil level of container.
All trees/shrubs etc to have all root coverings removed and any damaged roots removed with suitable pruning tool.
1.01.18 All plant material to be Certified nursery stock, of local provenance and in accordance with B.S.3988:2010 "Tree work recommendations" remove branches/damaged/broken during planting/ remove unwanted secondary shoots, weak forks, or crossing/breaking branches or dead material.
1.01.19 All trees/shrubs etc to be planted at depth of soil mark from nursery or soil level of container.
All trees/shrubs etc to have all root coverings removed and any damaged roots removed with suitable pruning tool.

LEGEND:
HARD SURFACES, GATES AND ENCLOSURE
REFER TO HARD LANDSCAPE DRAWINGS FOR DETAILS. (BDG DRAWING Nos.)



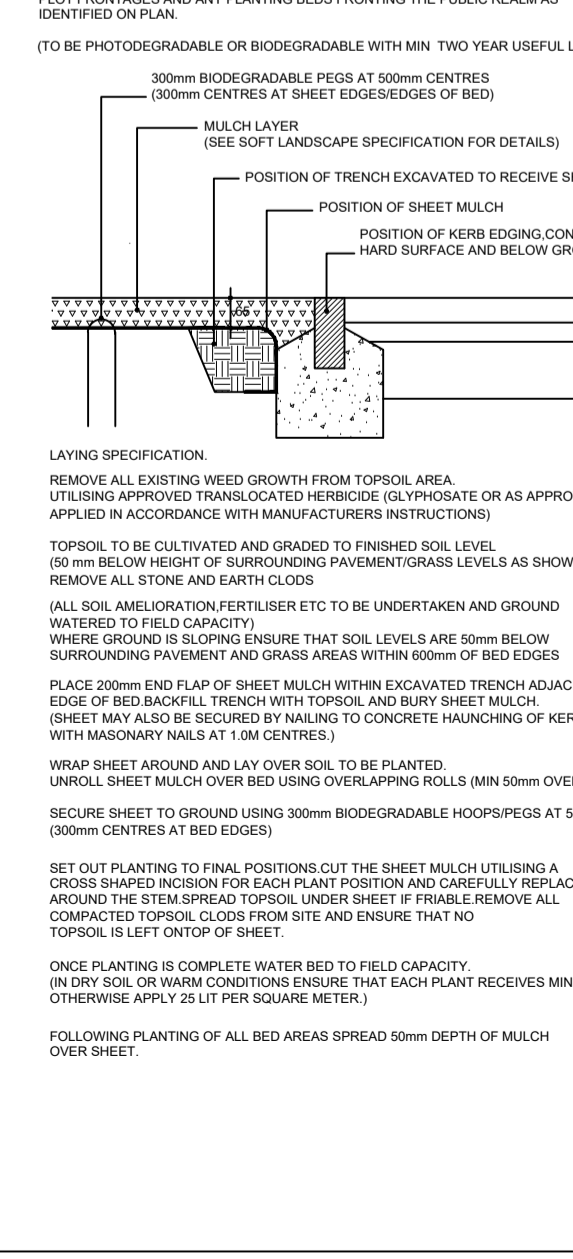
NOTE: ALL STREET TREE MANAGEMENT IS PART OF THE MANAGEMENT COMPANYS RESPONSIBILITY INCLUDING ANY TREE/CROWN ENCROACHMENT WITHIN 1.0M OF ANY LIGHTING COLUMNS



Rev	Date	By	Description
C2	23.03.21	aph	TREE POSITIONS/ROOT BARRIERS UPDATED TO PRIVATE AND ADDED DRAINAGE INFORMATION
CL	06.03.21	aph	FIRST ISSUE

Architect

SHEET MULCH DETAIL (N.T.S.)



NOTE: NARROW FLOTTAGE STRIP BETWEEN SHRUB/HEDGE PLANTING AND HIGHWAY AT FRONT FRONTAGE TO BE GRASS.

- EXISTING TREES/VEGETATION.**
- 6.01.01 FOR LOCATION AND CONSTRUCTION DETAILS OF ALL PROTECTIVE FENCING TO EXISTING TREES/TREE NUMBERS AND SPECIALIST CONSTRUCTION AREAS ALSO DETAILS OF EXISTING TREES (SIZE, VIGOUR, SPECIES) REFER TO ARBORICULTURAL CONSULTANTS REPORTS AND DRAWINGS.
 - 6.01.02 DRAWING REFERENCE.
 - 6.01.03 THIS DRAWING TO BE READ IN CONJUNCTION WITH THE FOLLOWING:
Architectural details and Site Layout (BDG NRW 800 series Dwg)
Tree Survey Assessment and Method Statement (1)
Applied road, footpath and highway verge. ()
Open Space Proposals (Matt Lee PR 175 series Dwg)
 - 6.01.04 THIS DRAWING TO BE READ IN CONJUNCTION WITH DRAINAGE AND SERVICE INFORMATION. MINOR ADJUSTMENT TO BE UNDERTAKEN ON SITE. SIGNIFICANT CHANGES TO BE AGREED WITH LANDSCAPE ARCHITECT (TREES NOT TO BE MOVED DUE TO BUILDINGS REMAIN SHOW ON DRAWINGS).
- NOTE: SURFACE LEVELS/ DRAINAGE.**
- 6.01.04 FOR DETAILS OF ALL EXISTING AND PROPOSED SURFACE LEVELS, FINISHED FLOOR LEVELS TO BUILDINGS AND TYPE AND ARRANGEMENT OF DRAINAGE SERVICES REFER TO PROJECT ARCHITECTS AND ENGINEERS DRAWINGS.
- IMPLEMENTATION AND MONITORING PROGRAMME.**
- 6.01.01 Implementation of all external works and hard landscape works will be completed as a completion of or during the building works.
Implementation of any communal planting within tree/shrub areas and bare root stock during next available planting season following completion of hard construction.
Implementation of all on-site landscape works will be completed as a completion of or during the building works.
 - 6.01.02 Monitoring of implementation of both hard and soft landscape works, up to completion to ensure compliance with approved drawings and specifications will be undertaken by a suitably qualified person as appointed by the Client.
A detailed site meeting will be held with the contractor for his action.
A Pre-contract site meeting between all relevant parties, including the developer, landscape contractor and site manager will take place prior to works starting.
The Council will notified the environmental case data for landscape works (or agreed phased start) and when works physically start on site.
The monitoring programme will provide written notification to the Council on completion of the Landscape Scheme and undertake monitoring meetings.
Areas of decomposition treatment will be signed off by the responsible professional as having been implemented in accordance with agreed methodology/specification. Councils Landscape Officer to be notified on completion of work (completion of site or phase).
 - 6.01.03
 - 6.01.04

CONTINUES ON SHEET 8

CONTINUES ON SHEET 1

BDG DESIGN (SOUTH) Ltd
Southway House
25 Southway, Colchester
Essex CO2 7BA
Tel: 01206 261406
Fax: 01206 274621
Email: BDG_enquiries@bdg-design.co.uk

BDG DESIGN PROJECT REF: 20025

Bellway
Bellway Homes Essex Division
Bellway House, 1 Cunard Square, Townfield Street, Chelmsford, Essex CM1 1AQ
Tel: 01245 259989 Fax: 01245 259996

Site: RIDLEY'S ORCHARD
OLD NORWICH ROAD
WHITTON, SUFFOLK

Title: SOFT LANDSCAPE PROPOSALS sheet 9 of 9

Date: FEB 2021 Drawn: aph
Scale: 1:250 @ A1 Checked: bdg

Drawing No. NRW : 878 Rev. C2

DO NOT SCALE THIS DRAWING
This drawing is the property of BELLWAY p.l.c. and must not be copied or reproduced in any way in whole or in part without the express permission of BELLWAY p.l.c. in writing. This drawing is intended as an illustration only and is not to be taken as a representation made on negotiating individual sales or part of contract documents.
Copyright © Bellway p.l.c.