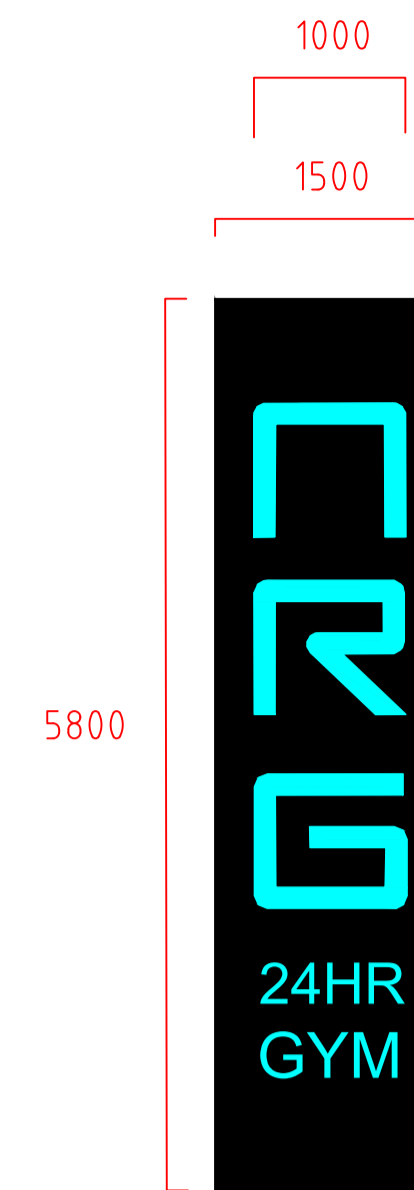


Large Flat Signage to a front elevation of the building.  
 Flat Signage to be 5mm aluminium dibond with digital print lettering.

(S2) (S6)

Large Flat Signage to a front elevation of the building.  
 Flat Signage to be 5mm aluminum dibond with digital print lettering.

Colours to be Mactac 9849.31 gloss blue green (NRG Aqua) & Pantone Process black



Illuminated signage S4  
 Side view

Colours to be Mactac 9849.31 gloss blue green (NRG Aqua)

(S4)

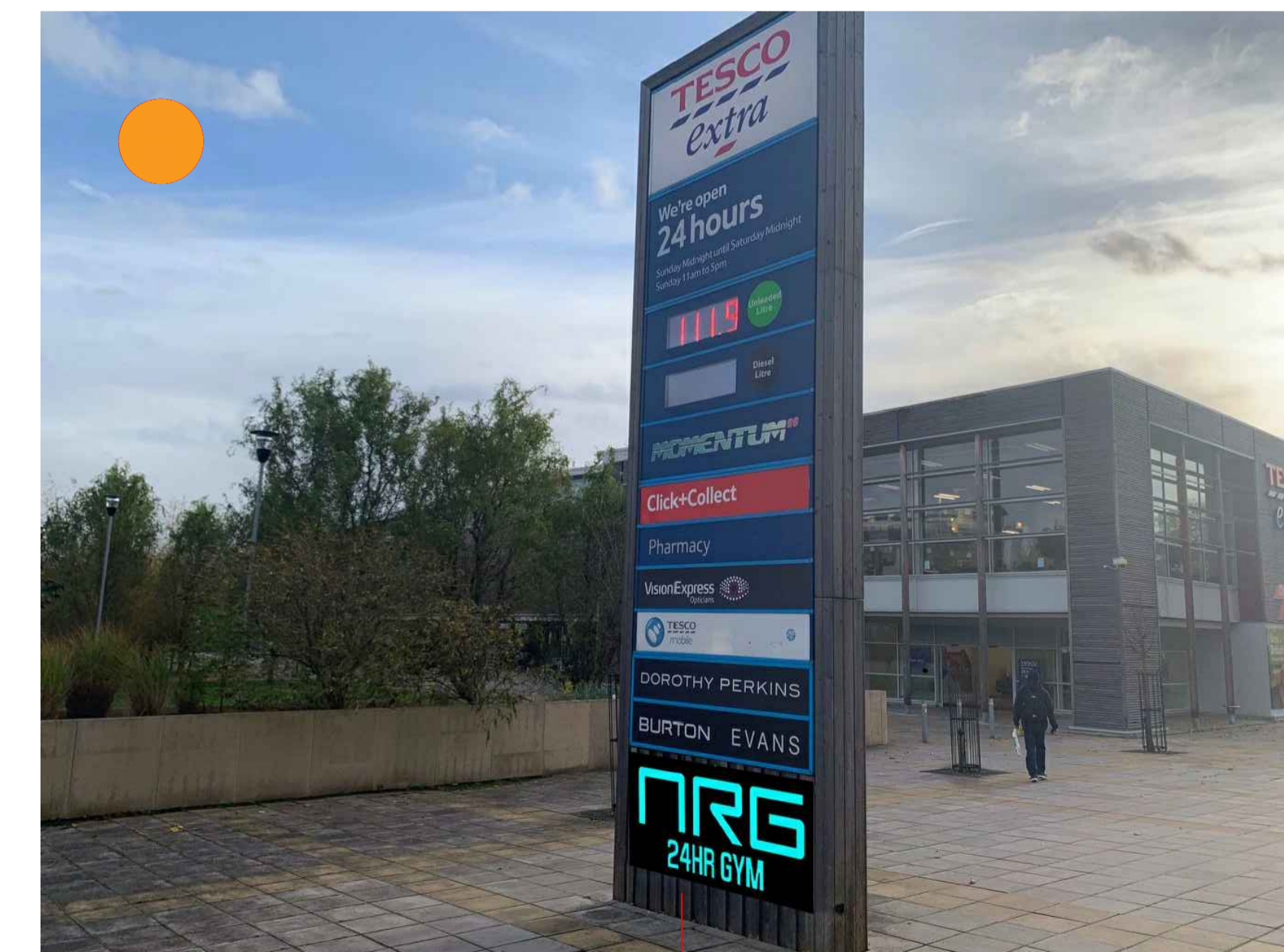
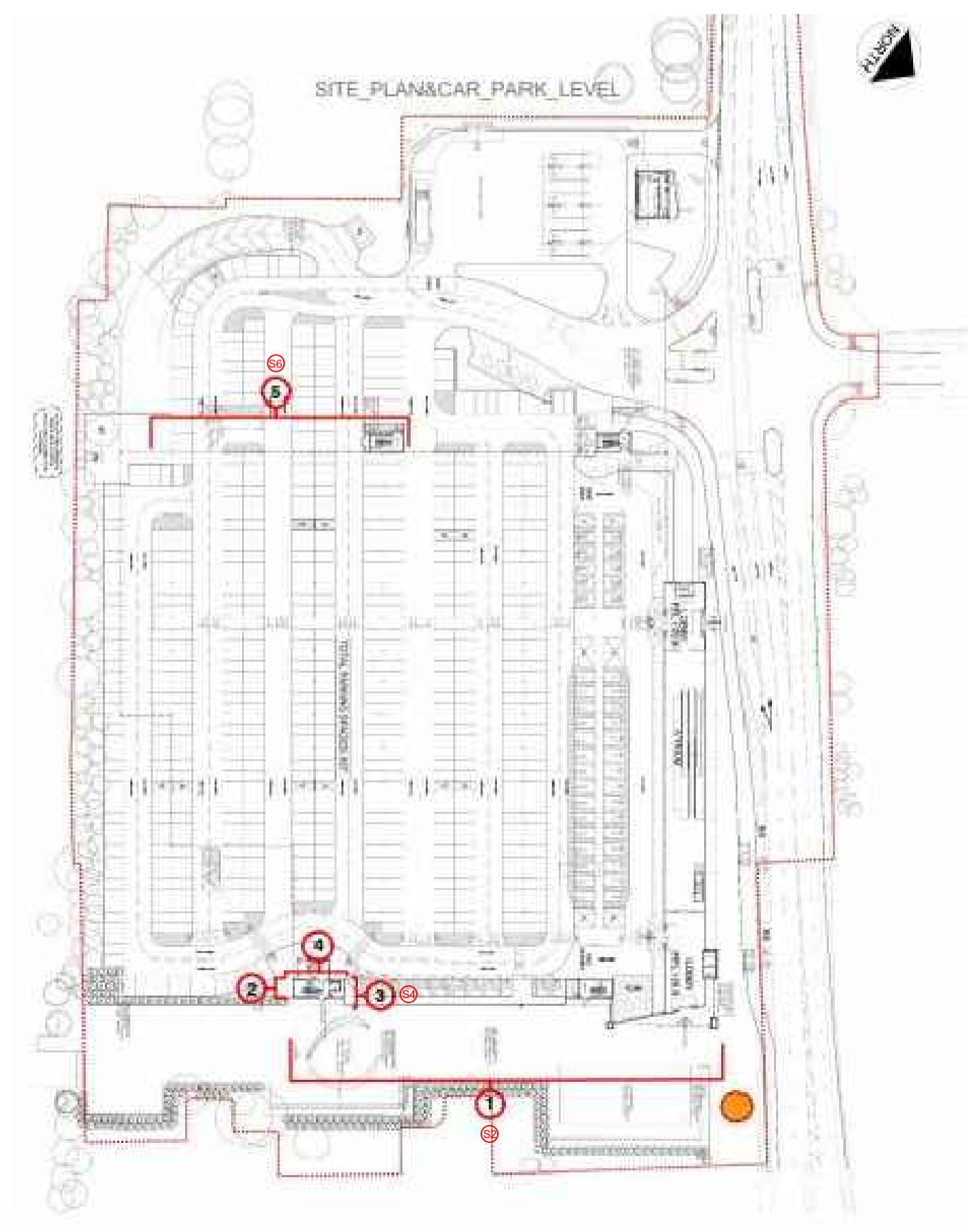
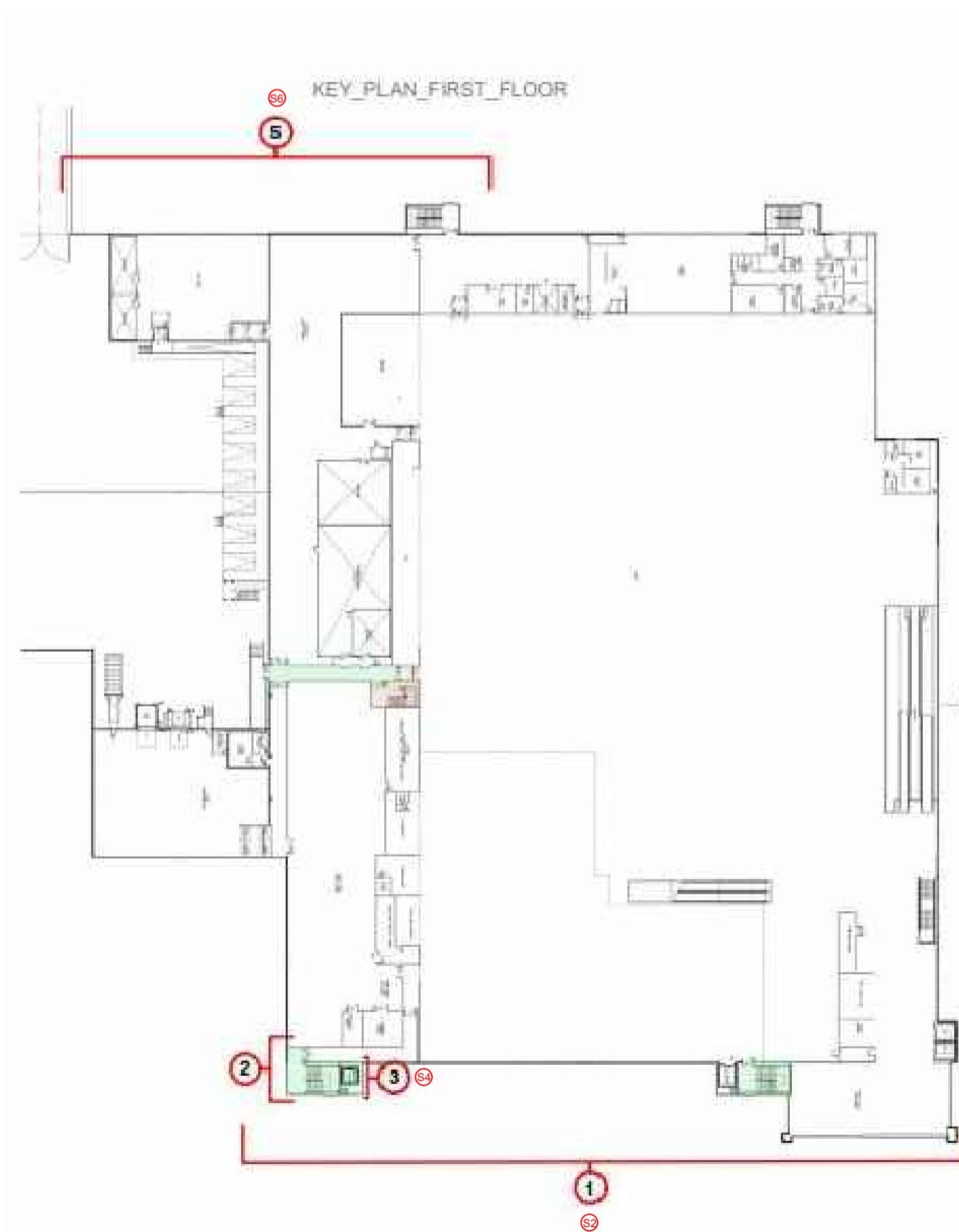
Large Signage to a front face.

Colours to be Mactac 9849.31 gloss blue green (NRG Aqua), close to Pantone 319 & Pantone Process black

Materials: Stainless steel and acrylic faces to the letters

Illumination: Internally Illuminated  
 Signage Illuminance Level: 300 cd/m2  
 Static Illumination

Colours: Text to be Mactac 9849.31 gloss blue green (NRG Aqua), close to Pantone 319 & Pantone Process black background



APPROX.W:1600,H:900-TBC\_ON\_SITE

NRG_GYM	client
NRG_GYM MANCHESTER	project
PROPOSED EXTERNAL_SIGNAGE	title
MAN_006_293	job No.
AV07_EXTERNAL	dwg No.
1:50@A1	scale
PS	drawn

