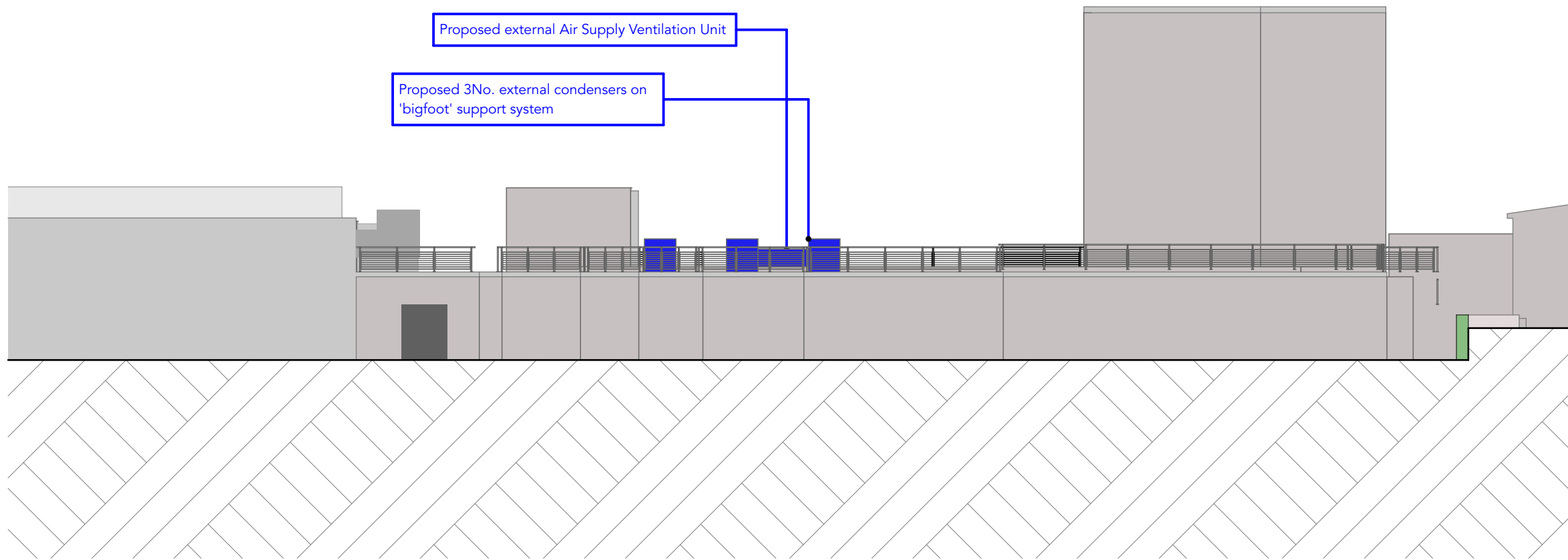


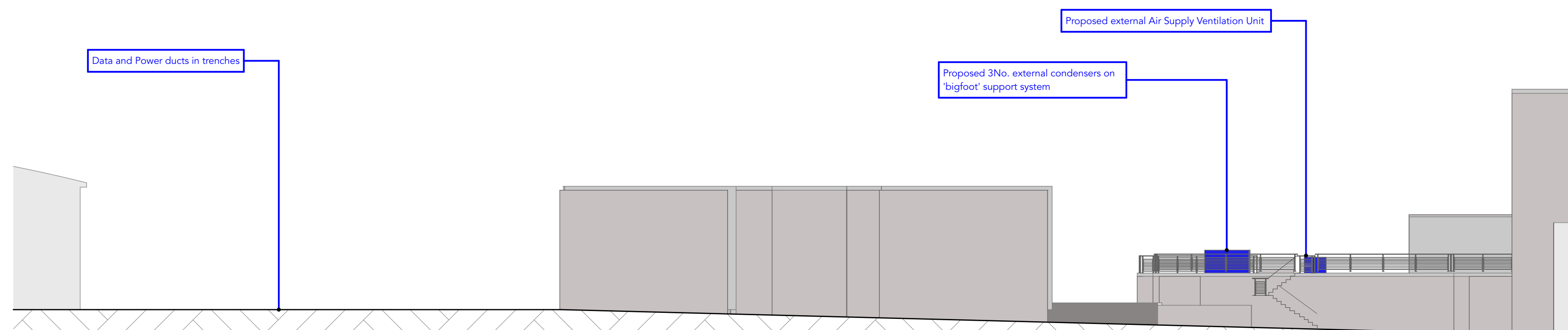
00- PROPOSED PLAN

1:200



PROPOSED - NORTH ELEVATION

1:200



PROPOSED - WEST ELEVATION

1:200

- All general ventilation ductwork to be manufactured from galvanised sheet metal
- All supply and return air ductwork to be thermally insulated and externally protected with heavy duty smooth silver aluminium venture clad
- Ductwork to be supported with 'big-foot' roof supports as per manufacturers detail
- Air supply Ventilation unit to be supported on 'bigfoot' roof support system as per manufacturers detail
- Turning vanes to be installed on all square and rectangular ductwork sections at every change in direction
- Flexible connections to be incorporated in the ductwork system to isolate the ductwork from vibration producing equipment, and to be thermally insulated

P02	12.04.21	Data control chamber added in car park	CL	Als
P01	09.04.21	First issue	CL	Als
rev	date	description	by	out

## PLANNING

project  
3363 Bld 150 Planning Application

drawing name  
Proposed Plan & Elevations

drawing ref	3363-MAP-00-00-DR-A-00002	scale / revision	S2 / P02
rev / job no		scale / format	1:200 @ A0
3363			

architecture / interiors / landscape  
maber.co.uk  
maber office  
Nottingham

00202