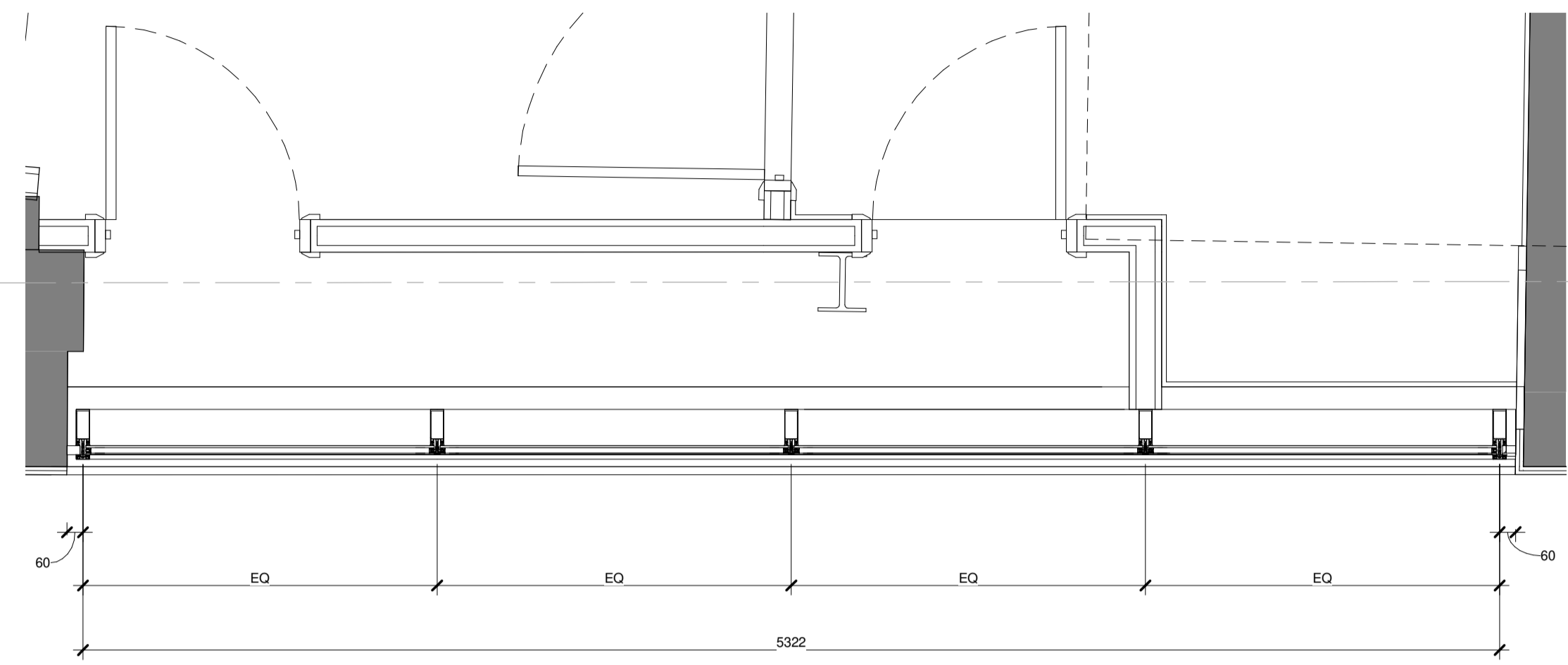
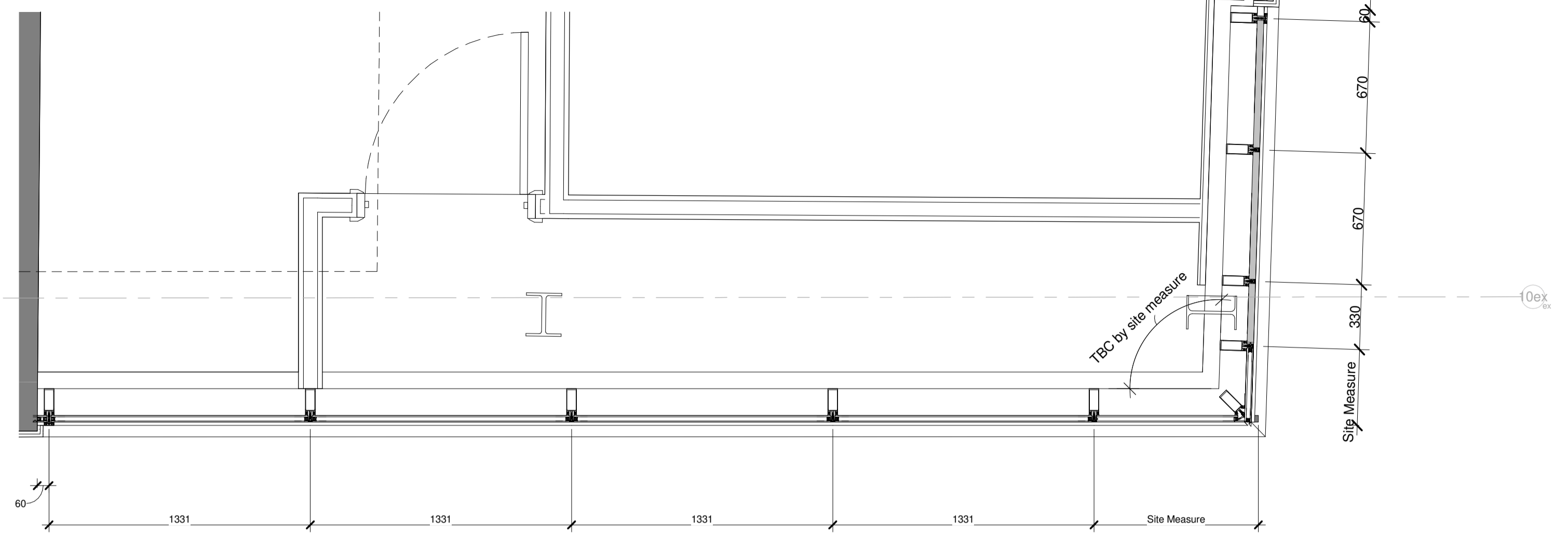


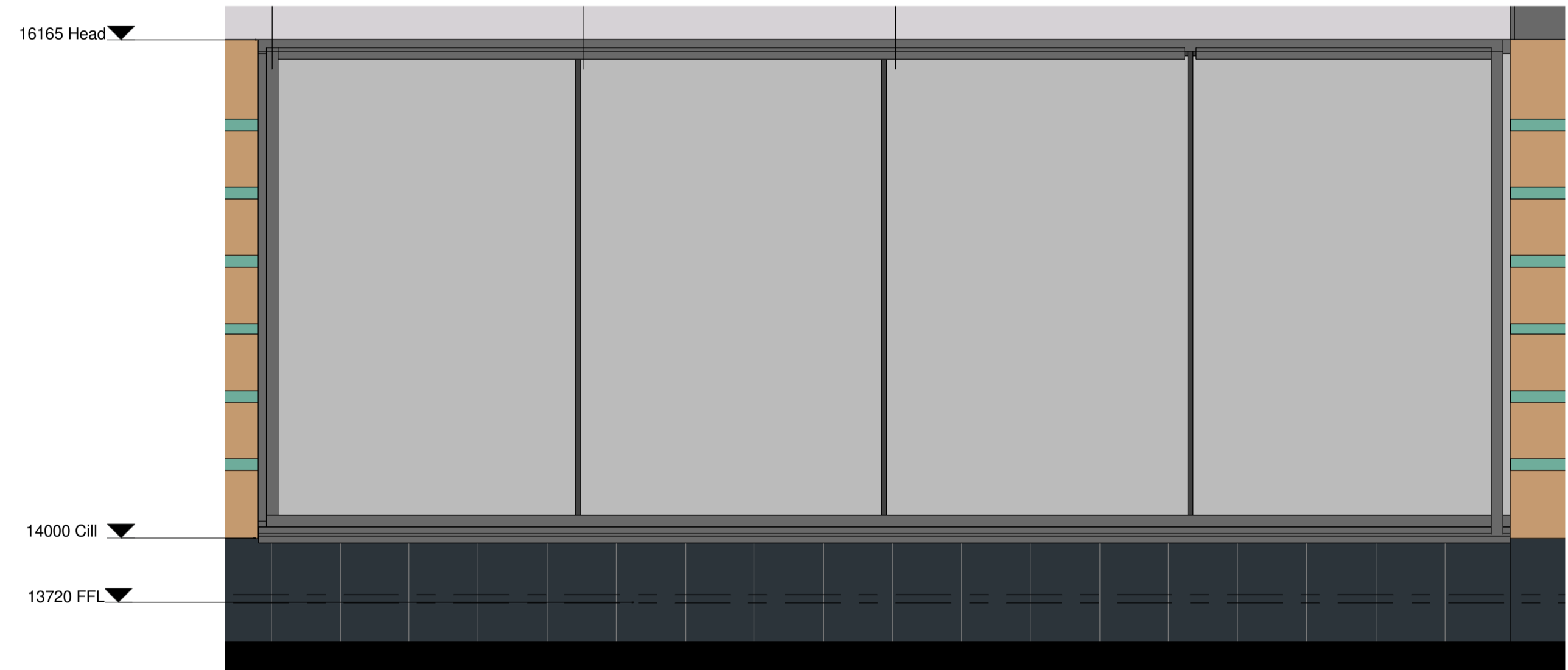
Revision	Description	Author	Checker	Date
P1	First Issue	SPE	DC	25.10.2018
P2	Design development issue	GB	DC	09.11.2018
C1	Issued for Construction	GB	DC	19.12.2019
C2	Amendments to remove recessed areas from screens as per CE65494	GB	DC	24.08.2020



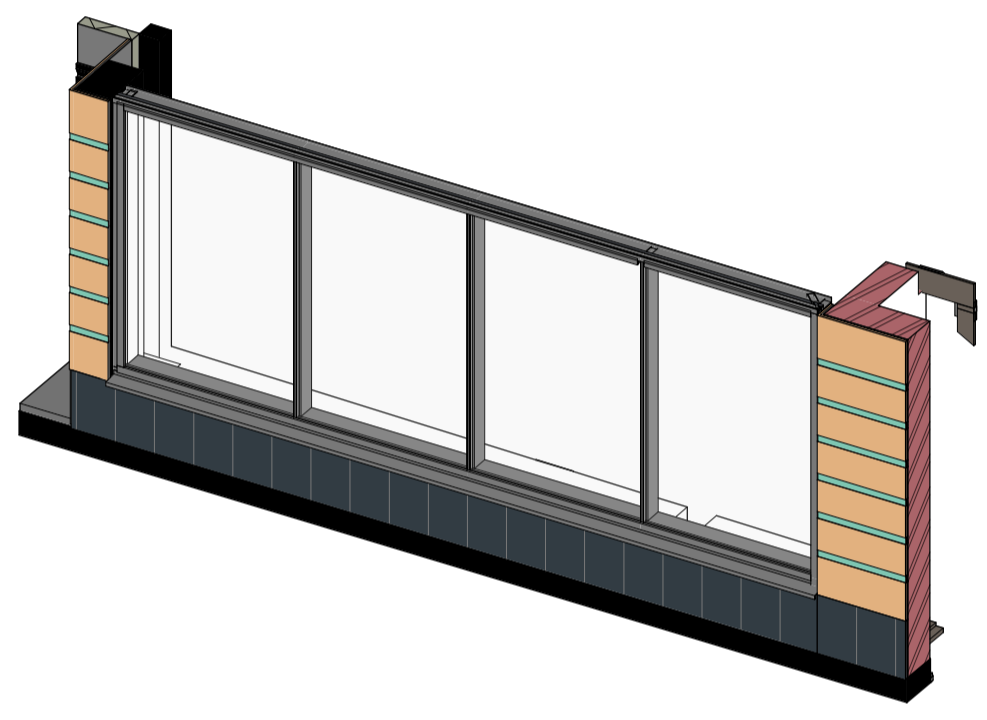
CW0.04 'Shop Front 01'
1 : 20



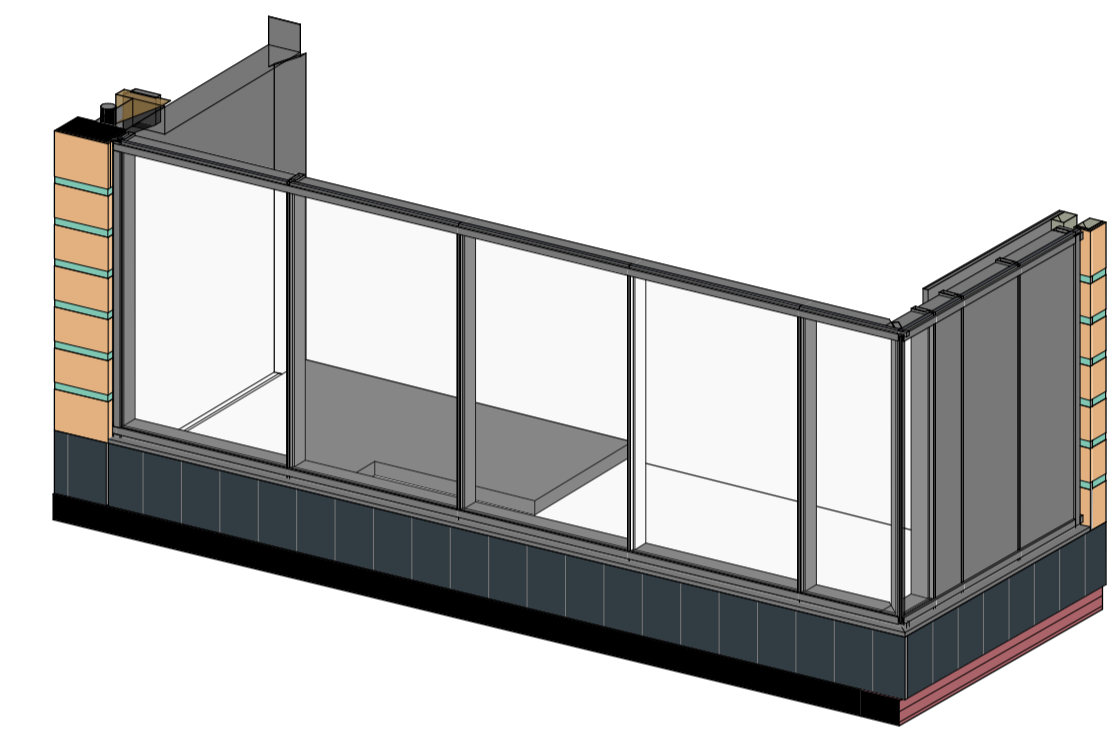
CW0.04 'Shop Front 02'
1 : 20



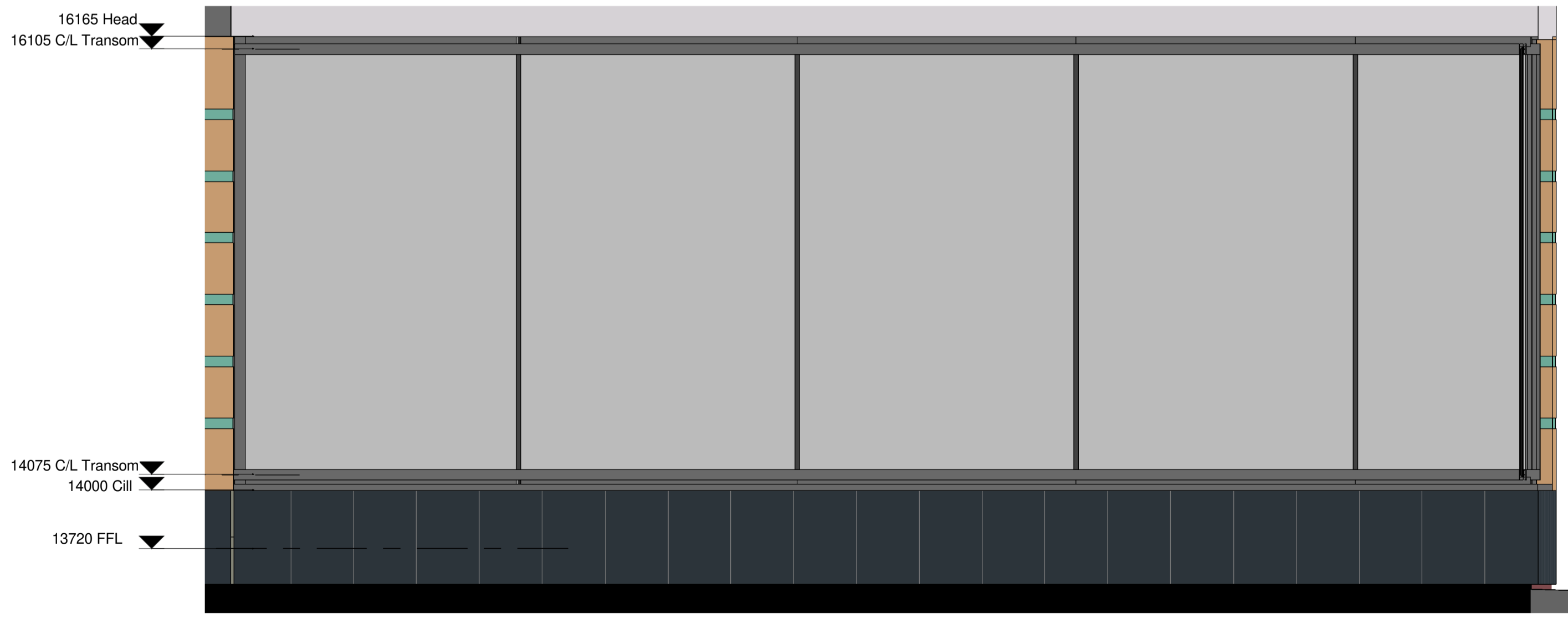
CW0.03 High St Elevation
1 : 20



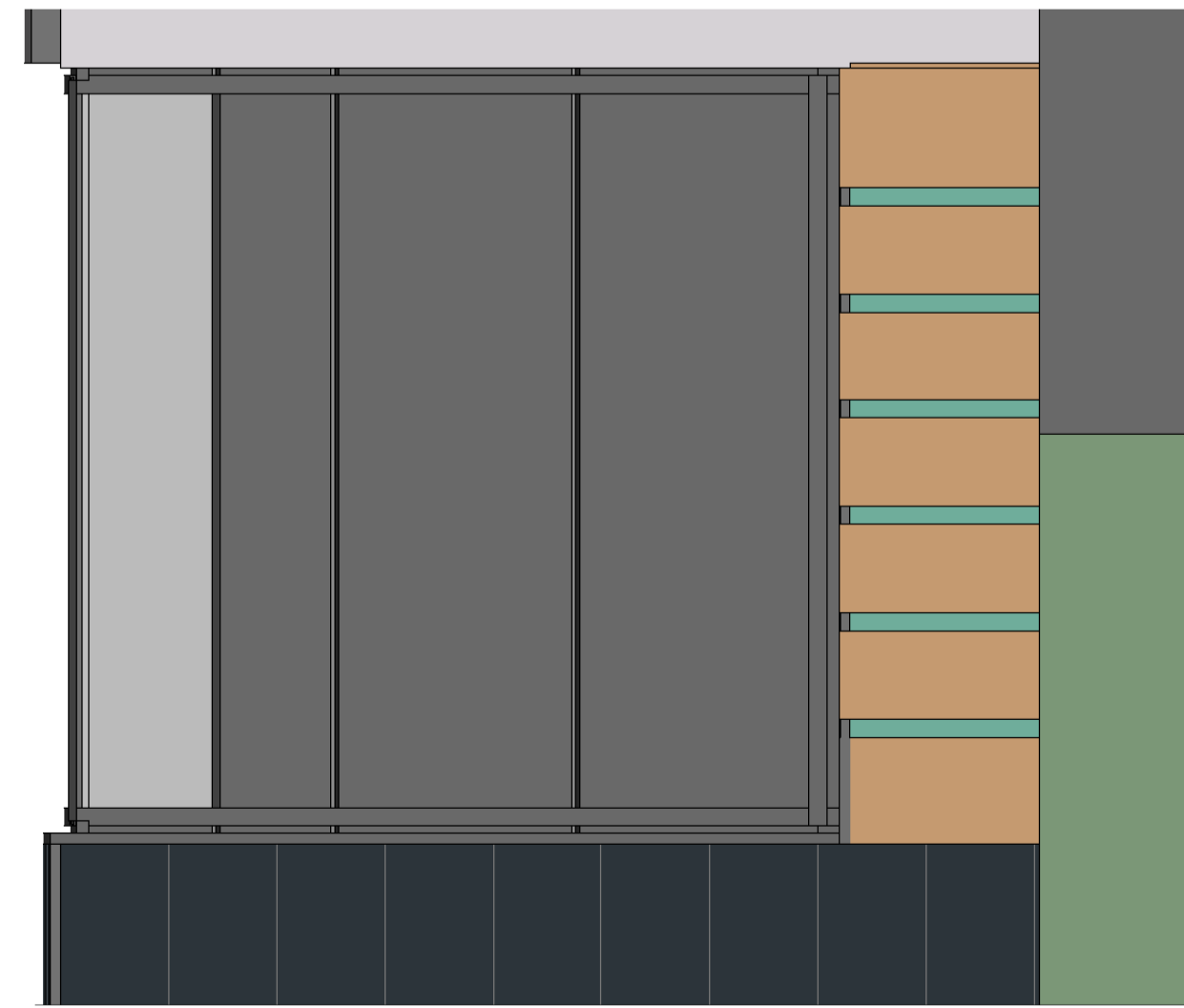
CW0.03 'Shop Front' 01



CW0.04 'Shop Front' 02



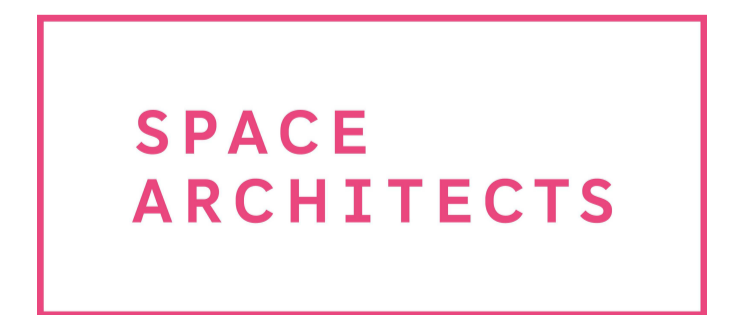
CW0.04 High St Elevation
1 : 20



CW0.04 Middle St Elevation
1 : 20

NOTE

- Curtain walling as H11/112
- Ensure site dimensions and levels are taken and checked prior to fabrication.
- Refer to H11 generally for details of glazing / flashings / accessories etc.
- PPC to RAL 7024.



Spaceworks
Benton Park Road
Newcastle upon Tyne
NE7 7LX
T: +44 (0)844 800 6660
www.spacearchitects.co.uk

Project STOCKTON GLOBE				
Drawing Title Globe Shopfronts to High Street Elevation				
Project No. K00186	Drawing No. ZZ-XX-DR-A-31-0001	Suitability A5	Revision C2	Scale at A1 1 : 20
File Reference: K00186-SPACE-ZZ-XX-DR-A-31-0001-A5-C2				