

P4

CRACKED BRICKWORK AT CORNER OF LOW LEVEL ROOM TO BE REMOVED AND REBUILT. ADJACENT CRACKED BED JOINT TO BE CUT OUT TO MIN. 50 DEPTH AND FURRY REMOVED..

DAMAGED LINTEL TO BE REPAIRED BY FURRY EXPOSING AND REINFORCING OF CORRODED BARS AND CONC. COVER APPLIED AS SPECIALIST DETAILS

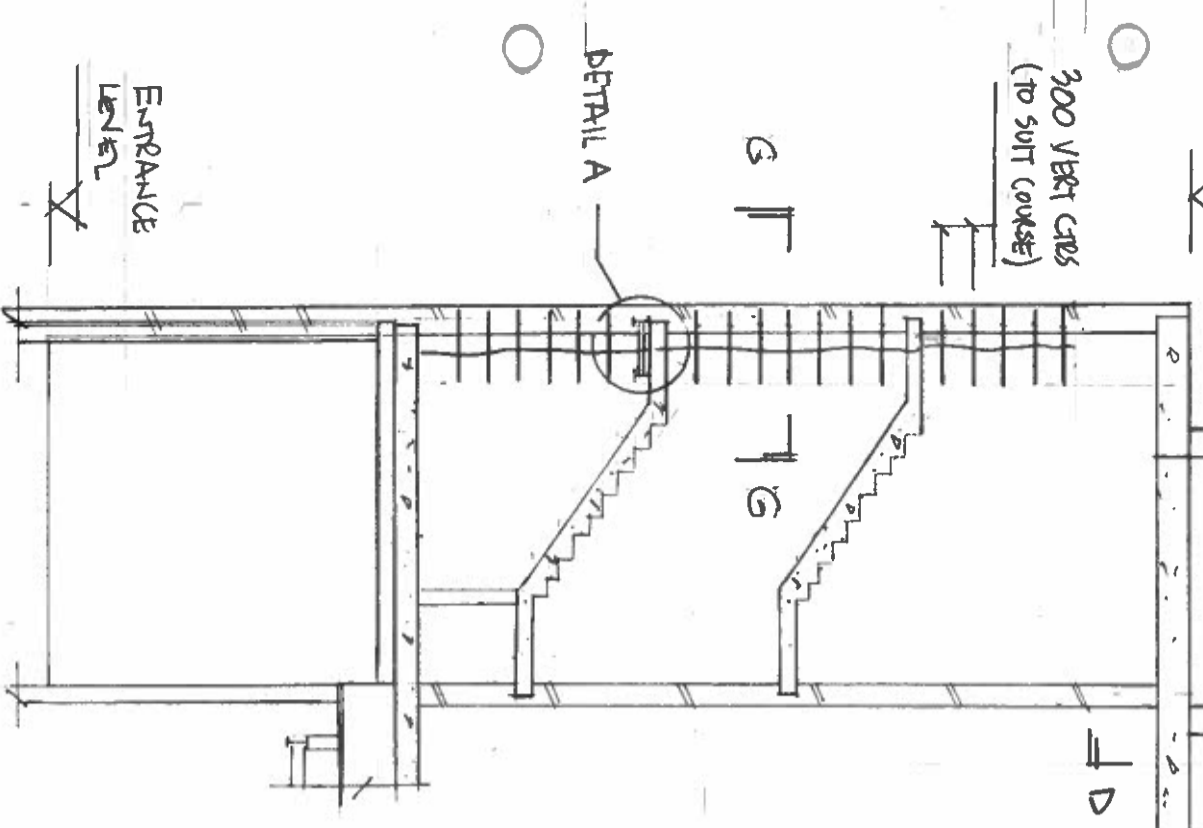
PLANT LEVEL

300 VERT GRBS (TO SUIT COURSE)

G

DETAIL A

ENTRANCE LEVEL



AS OTHER END

F D B F

300

HALFBARS

F D B F

VIEW ON INSIDE FACE OF FRONT WALL TO BUILDING LOOKING TOWARDS HIGH STREET APPROX 1:75 AT A3

ALL CRACKED PERPEND AND BED JOINTS TO BE CUT OUT TO FULL THICKNESS OF WALL AND FULLY INFILLED WITH AN EPOXY GROUT TO SPECIALIST DETAILS. (TYPICAL TO ALL AFFECTED WALLS)

E F NEW JOINT

HALFBARS

E F

F A

C F

P4

REPAIRS TO CRACKED MASONRY AND DISPLACED PANELS AT FRONT WALL TO BUILDING G

| | | |
|----|---------|---------------------------------------|
| P4 | 26.2.20 | REUSED WHERE SHOWN [P4] |
| P3 | 14.2.20 | REVISED WHERE SHOWN [P3] |
| P2 | 26.6.19 | ISSUED FOR INFORMATION HEUFIX AMENDED |
| P1 | 22.4.19 | ISSUED FOR INFORMATION |

K001860- BGP-XX-72-SK-S-23-SK09



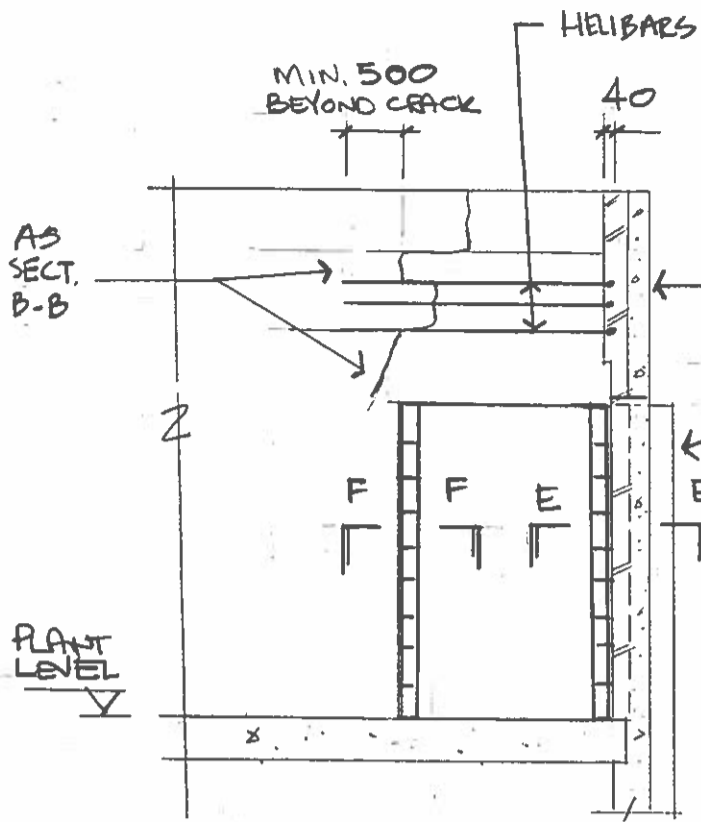
Billinghurst George & Partners
CONSULTING ENGINEERS
Widgong House, Widgong Court, Preston Farm Business Park, Stockton, TS18 3TA
Tel: 01947 838 410

Sheet: P4 of 7
Rev: P4 Date: 22.4.19
Project No: 1812145

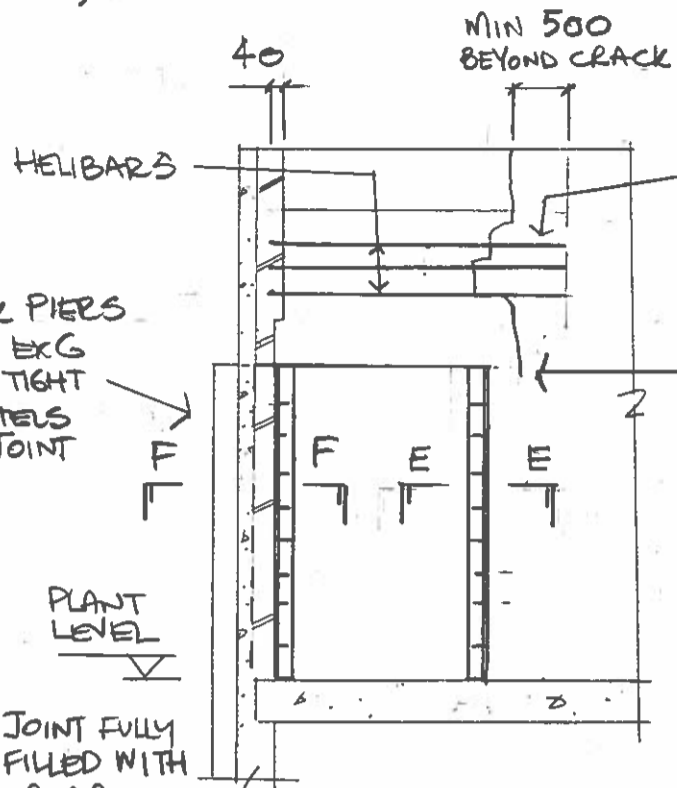
| | |
|-------------------|----------------|
| Project Title: | STOCKTON GLOBE |
| Calculations for: | REDEVELOPMENT |
| Made by: | NW |
| Checked: | |
| Refs: | |

P4

ALL CRACKED PERPEND AND BED JOINTS TO BE CUT OUT TO FULL THICKNESS OF WALL AND FULLY INFILLED WITH AN EPOXY GROUT TO SPECIALIST DETAILS (TYPICAL TO ALL AFFECTED WALLS)



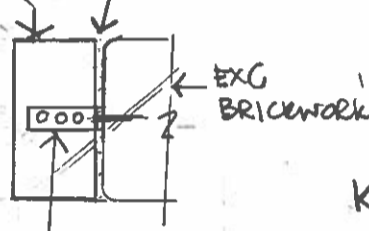
SECTION A-A
APPROX 1:50 AT A4



SECTION B-B
APPROX 1:50 AT A4

215x103 BRICK PIERS TO BE BUILT OFF EXG CONC SLAB & TIGHT TO U/S EXG LINTELS WITH MORTAR JOINT

215x103 BRICKWORK PIER 10 JOINT FULLY INFILLED WITH MORTAR



PLAN E-E
F-F HANDED
APPROX. 1:10 AT

100 LONG SPB TIES AT 150 CTRS WITH PLUG AND 50 LONG NO 14 SCREWS

RENDER TO BE REMOVED TO CHECK EXTENT OF EXG CRACKING. DECIDE WHETHER TO USE HELIBARS OR REBUILD.

RENDER TO BE REMOVED TO CHECK CONDITION OF LINTEL AT BEARING

K00186-BGP-XX-ZZ-SK-S-23-SK09



Billinghurst George & Partners
CONSULTING ENGINEERS

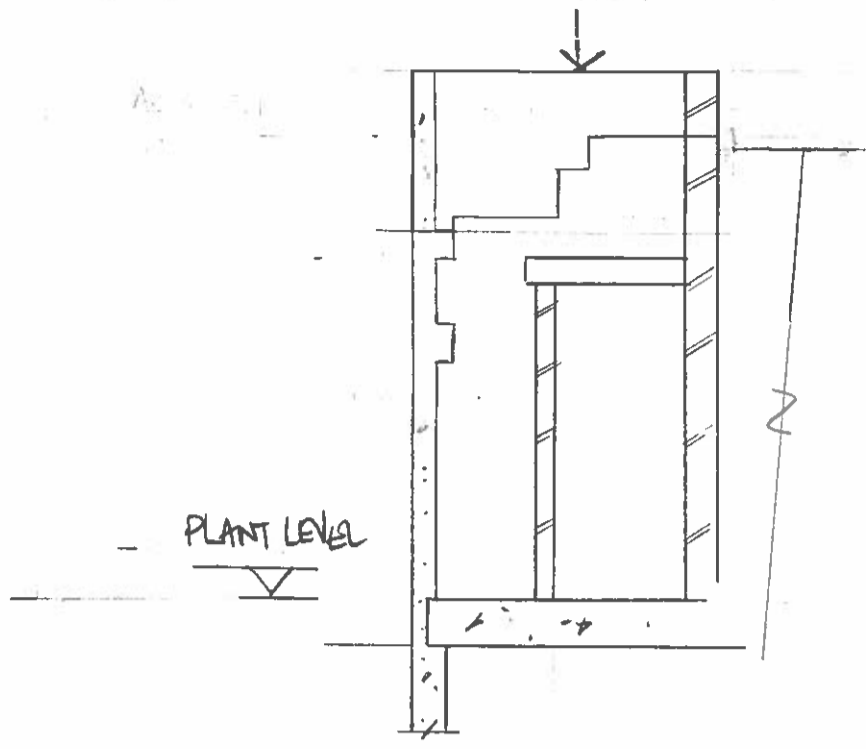
Wellington House, Wellington Court, Preston Farm Business Park, Stockton, TS18 3TA
Tel: 01642 876 470

Sheet: 2 of 7
Rev: P4 Date: 22.4.19
Project No: 18T2145

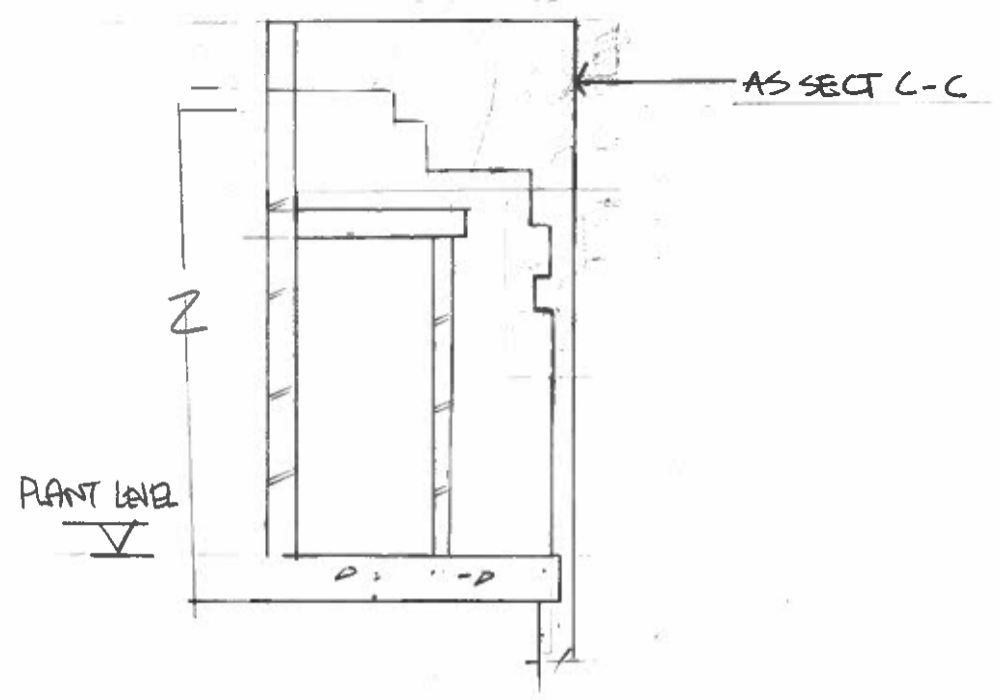
| | | |
|-------------------|----------------|----------|
| Project Title: | STOCKTON GLOBE | |
| Calculations for: | REDEVELOPMENT | |
| Made by: | NW | Checked: |
| Refs: | | |

PA

ALL CRACKED PERPEND AND BED JOINTS TO BE CUT OUT TO FULL THICKNESS OF WALL AND FULLY INFILLED WITH AN EPOXY GROUT TO SPECIALIST DETAILS (TYPICAL TO ALL AFFECTED WALLS)



SECTION C-C
APPROX 1:50 AT A4



SECTION D-D
APPROX 1:50 AT A4

K00186-BGP-XX-ZZ-SK-S-23-SK09



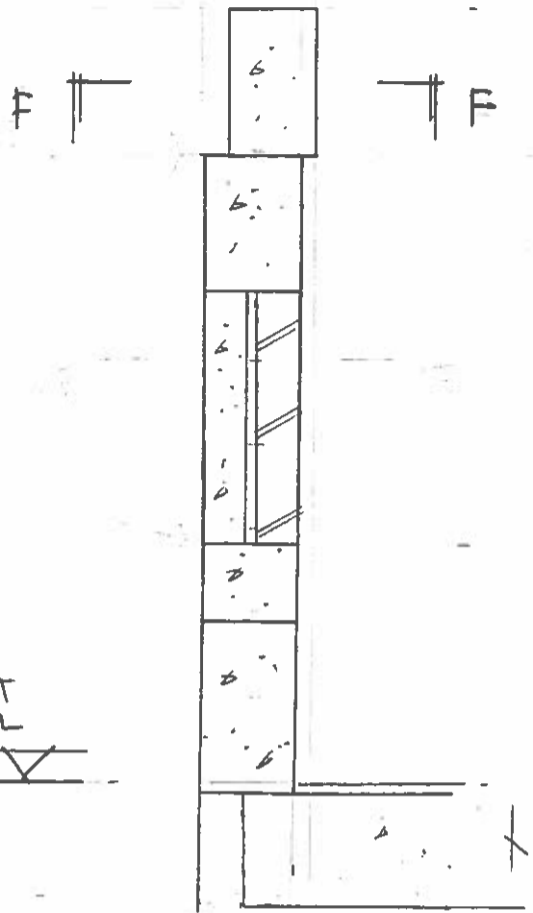
Billingham George & Partners
CONSULTING ENGINEERS

Wellington House, Wellington Court, Preston Farm Business Park, Stockton, TS18 3TA
Tel: 01642 876 470

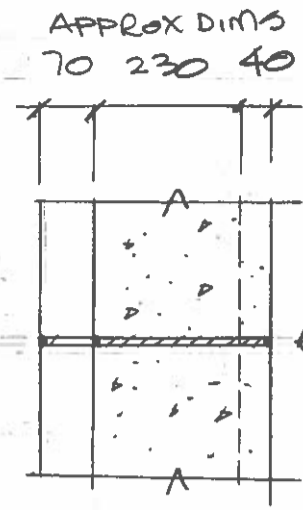
Sheet: 3 of 7
Rev: PA Date: 14.2.20
Project No: 18T2145

| | | |
|----------------------------------|-----------|--------|
| Project Title : STOCKTON GLOBE | | |
| Calculations for : REDEVELOPMENT | | |
| Made by : | Checked : | Refs : |

FOR DETAILS OF
ROOF SEE BGP
DRG NO.



SECTION E-E
APPROX 1:20 AT A4



PLAN F-F

15 THICK JOINT TO BE FORMED
THROUGH FULL SECTION OF
EXISTING PRECAST CONCRETE / BRICK
PARAPET DOWN TO PLANT
SLAB LEVEL BY A NEAT SAW
CUT. JOINT TO BE INFILLED
WITH 15 THICK NUCELL 200
AND SEALED ALL ROUND WITH
15x15 UNISEAL SEALANT.

K00186-BGP-XX-ZZ-SK-S-23-SK09



Billinghurst George & Partners
CONSULTING ENGINEERS

Wellington House, Wellington Court, Preston Farm Business Park, Stockton, TS16 3TA
Tel: 01642 876 470

Sheet: 4 of 7
Rev: P4 Date: 22.4.19
Project No: 18T2145

| | | | |
|-------------------|----------------|----------|-------|
| Project Title: | STOCKTON GLOBE | | |
| Calculations for: | REDEVELOPMENT | | |
| Made by: | NW | Checked: | Refs: |



Project Title: STOCKTON GLOBE

Calculations for: REDEVELOPMENT

Made by: NW

Checked:

Refs:

EXISTING RENDER TO BE REMOVED, 15 THICK NUCELL 200 PLACED AGAINST END OF EXG. CONCRETE UNIT AND GAP BACK TO BRICKWORK INFILLED WITH EPOXY REPAIR MORTAR AND RE RENDERED BACK TO 15X15 UNISEAL

MIN. 500 BEYOND CRACK

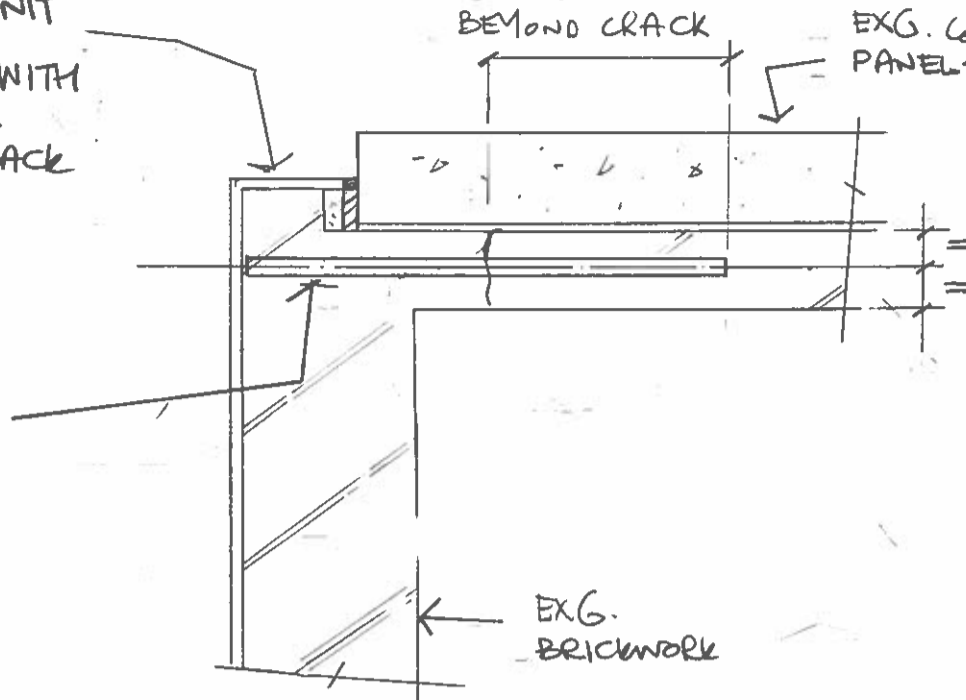
EXG. CONCRETE PANELS

EXISTING CRACK TO BE REPAIRED USING SOCKFIX OR SIMILAR USED IN ACCORDANCE WITH MANUFACTURERS RECOMMENDATIONS

EXG. BRICKWORK

PLAN G-G

NOTE SITE INSPECTION TO BE CARRIED OUT TO CONFIRM DETAILS OF EXG. CONSTRUCTION

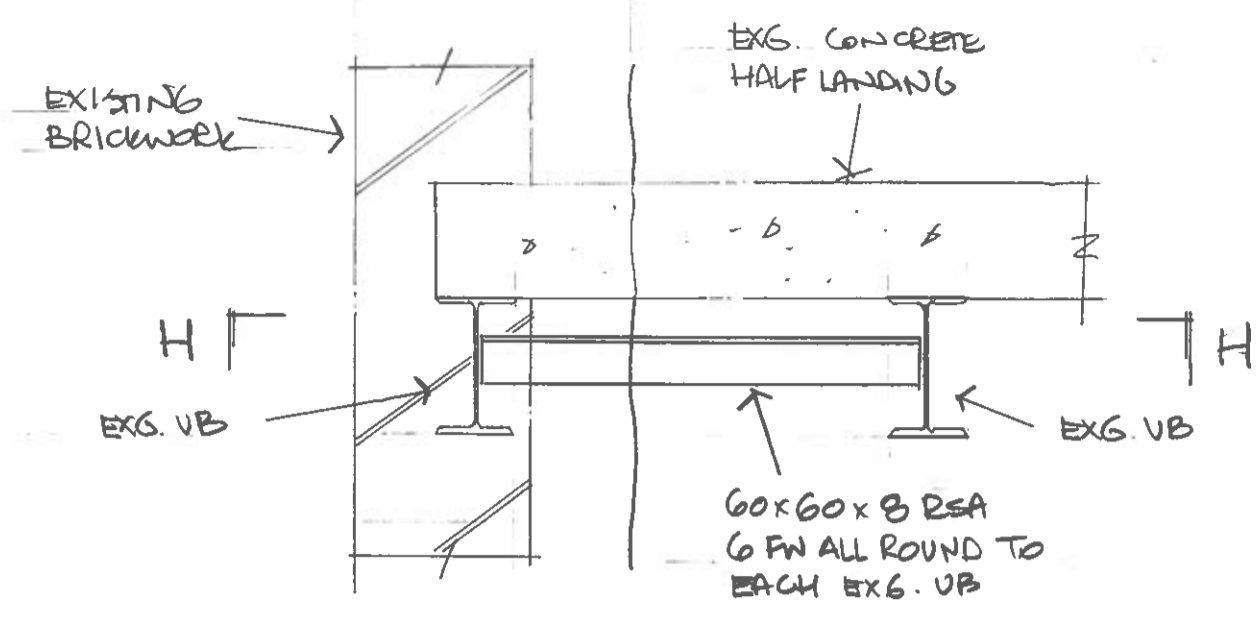


K001060 - BGP-XX - ZL-SK - S-23 - SK09

BGP
Billingshurst George & Partners
CONSULTING ENGINEERS
Wellington House, Wellington Court, Preston Farm Business Park, Stockton, TS18 3TA
Tel: 01642 878 870

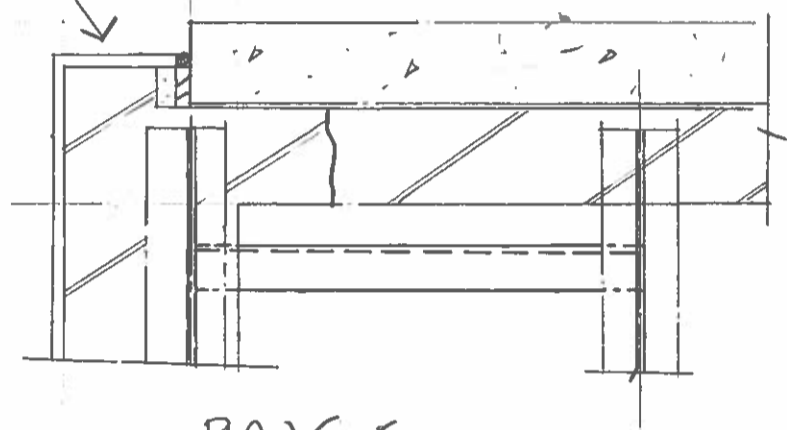
Project Title: STOCKTON GLOBE
Calculations for: REDEVELOPMENT
Made by: **NW**
Checked:
Revs:

Sheet: 6 of 7
Rev: **PA**
Project No: 1812145
Date: 22.4.19



ENLARGED DETAIL A
APPROX 1:10 AT A4

FOR DETAILS OF REPAIRS REFER TO PLANE E-E



PLAN G-6

K00106 - BGP - XX - ZZ - SK-5-23 - SK 09



Billinghurst George & Partners
CONSULTING ENGINEERS

Wellington House, Wellington Court, Preston Farm Business Park, Stockton, TS18 3TA
Tel: 01642 876 470

Sheet : 7 of 7
Rev : P4 Date : 26.6.19
Project No : 18T2145

Project Title : STOCKTON GLOBE

Calculations for : REDEVELOPMENT

Made by : NW

Checked :

Refs :

General Notes

All works to be carried out in accordance with the appropriate Health & Safety documentation and BGP Health & Safety Risk Assessment.

All works are to be carried out in accordance with BGP works specification and the Building Regulations.

All levels are based on site datum.

Steelwork

All design, fabrication and erection of steelwork to be in accordance with BS 5950, and the National Structural Steelwork Specification.

All Hot Rolled steelwork to BS EN 10 025 S355 JR.

All bolts to be 16 diameter UNO Grade 8.8 Zinc plated.

All new steelwork to be blast cleaned to clause 720 of BS7079: Part A1, preparation grade Sa2.5 max profile 75 microns and shop painted with ViterPrime 035 Alkyd zinc phosphate primer to dry film thickness 75 microns then site painted with ViterTar BTB 136 to dry film thickness 200 microns by Spencer Coatings or similar.

Where accessible and corroding, all existing steelwork is to be wire brushed down to firm clean steelwork, degreased and site painted with ViterBond ST200 surface tolerant two pack epoxy aluminium primer to dry film thickness 150 microns by Spencer Coatings or similar.

Masonry

All masonry works to be carried out in accordance with BS 5628.

Brickwork to be Engineering class B with minimum compressive strength 75n/sqmm.

Mortar to be designation (ii) below ground level and designation (iii) above ground level.

All ties to be stainless steel by Ancon or similar approved. Ties to be used in accordance with manufacturers recommendations.

Helifix repairs

Where shown cracked brickwork is to be repaired using Helifix or similar approved. Helifix are to be 6 diameter stainless steel installed at maximum 300 vertical centres (to suit coursing) in 40 deep slots cut in masonry and grouted using Helifix grout. The bars are to extend a minimum 500 (UNO) beyond each side of the crack. Where the crack is located closer than 500 from a corner the Helifix is to extend round the corner and beyond by a minimum 300 as shown. All works are to be carried out in accordance with Helifix requirements.