

Material Key:

- 1 BRICK
- 2 DOUBLE GLAZED ALUMINIUM WINDOWS
- 3 SLATE ROOF
- 4 BALCONY RAILING GLASS BALUSTRADE
- 5 TIMBER DOOR
- 6 TIMBER INFILL PANEL/VERTICAL TIMBER CLADDING
- 7 GALVANIZED STEEL REMOTE CONTROLLED GATE
- 8 RETAINING WALL
- 9 WHITE RENDER
- 10 CURTAIN WALL TO THE STAIRCASE

Notes:

**WORK IN PROGRESS**  
23.07.18

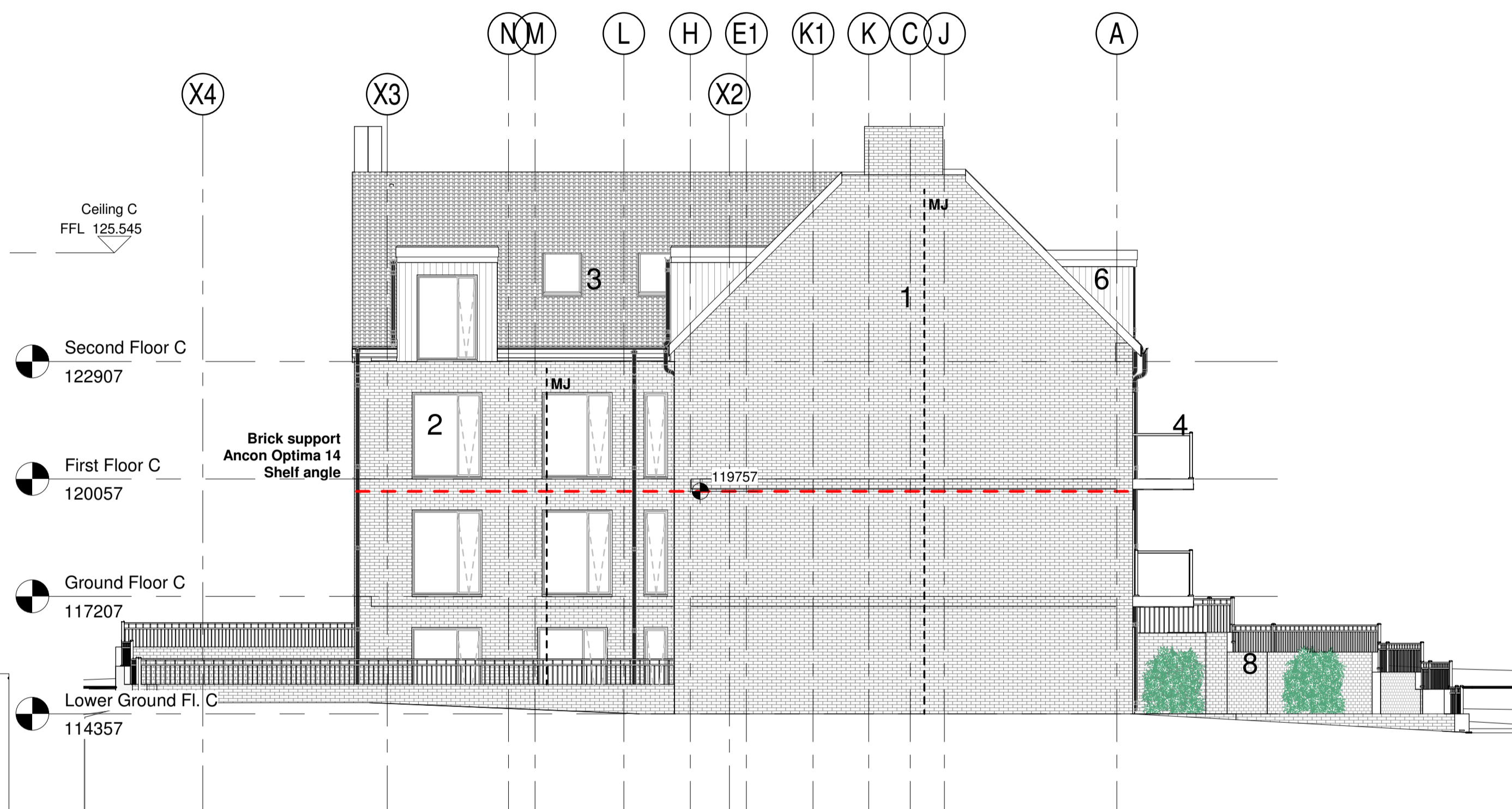


Notes:

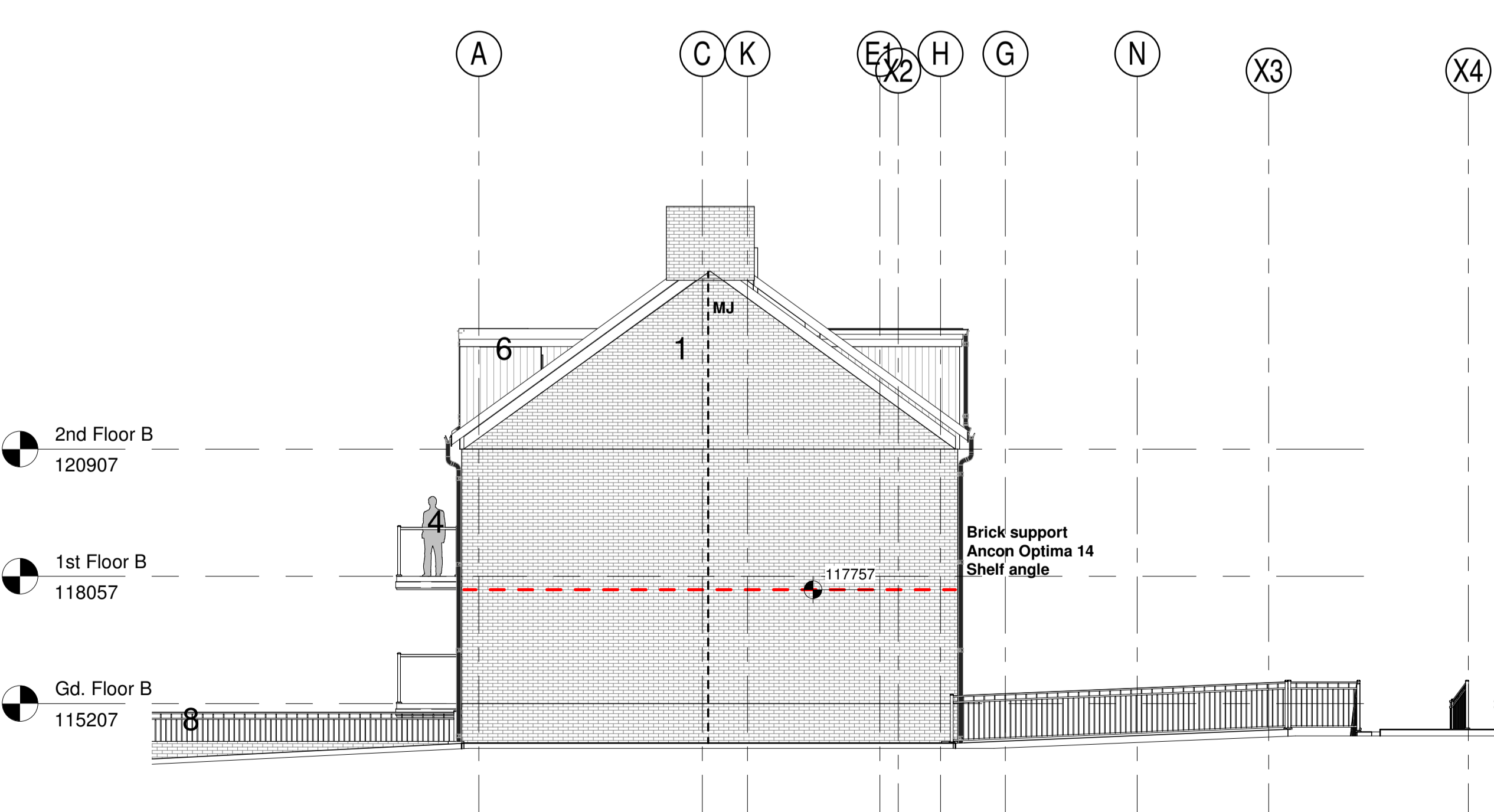
- 1. Downpipes shown indicatively. Layout and flow rate TBC by Contractor.
- 2. Movement Joints in brick wall TBC by Contractor.
- 3. Brick Support angle details by Structural Engineer.



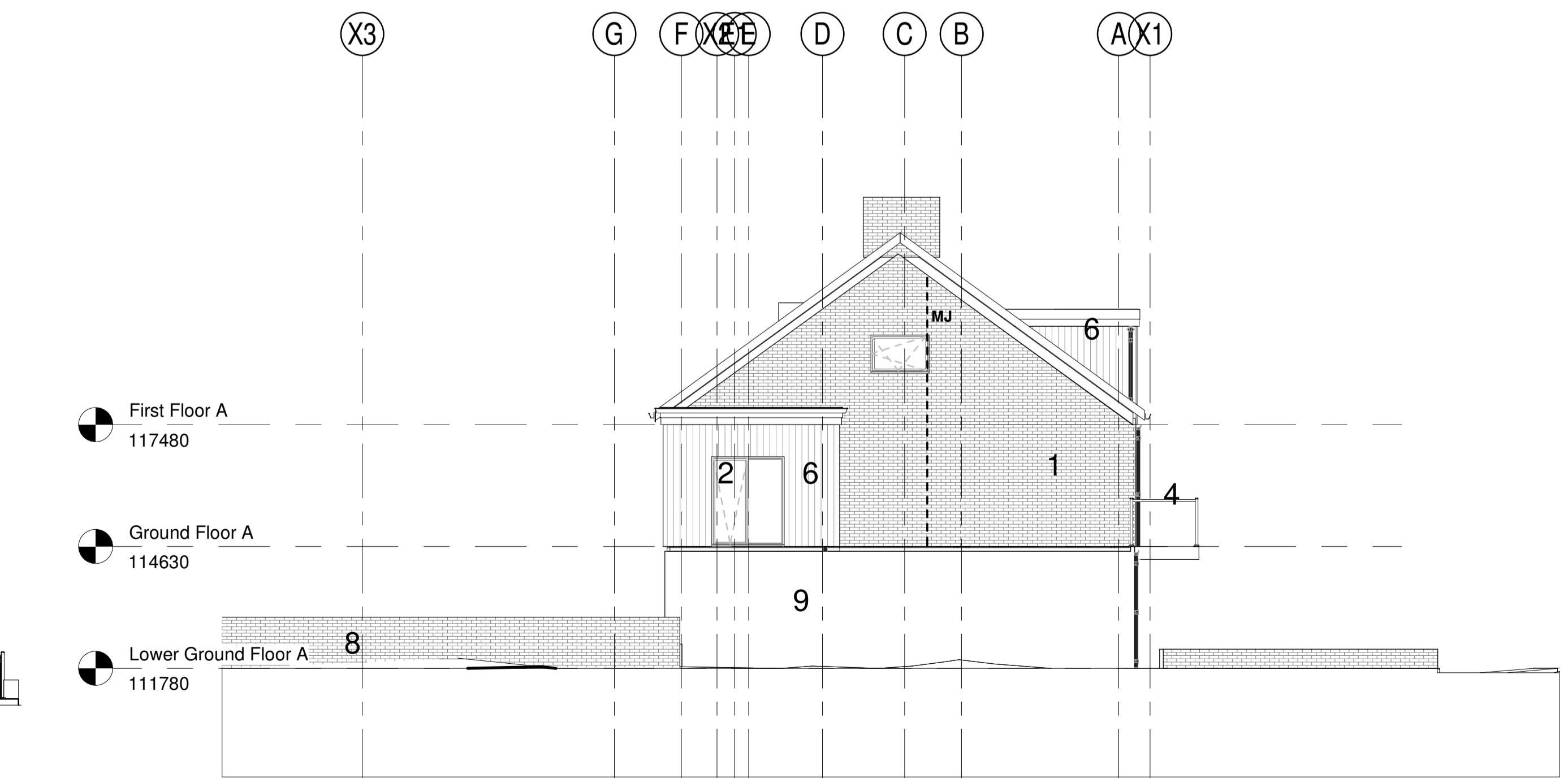
**3 Front Elevation 3 - Block C**  
1 : 100



**4 Rear Elevation 1 - Block C**  
1 : 100



**1 Side Elevation 2 - Block B**  
1 : 100



**2 Side Elevation 1 - Block A**  
1 : 100

G	14.04.21	Windows amended to aluminium	JJ	PB
F	31.08.19	External boiler flue chimney removed from Block C	EK	
E	26.07.18	Windows opening types added	AP	
D	23.07.18	MJs and rainwater pipes added	AP	
C	29.06.18	Levels and Brick support added	AP	
B	25.04.18	General Update	Bk	JJ
A	12.04.18	Planning Issue	BK	JJ

Rev: Date: Details: By: Chk:



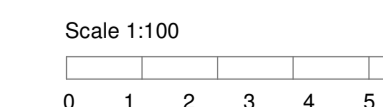
2 Cardinal Street  
Ipswich  
IP1 1LG

**CONSTRUCTION**

Client / Location:  
2 & 4 Steeplands and 1 & 3  
Claybury

Drawing:  
**Proposed Elevations Block A,  
B & C**

Scale: As indicated @A1	Date: 26/03/18	Drawn: BK	Check: JJ
Job No: 1701030	Dwg No: 502	Rev: G	



Copyright EngineerRoom(technical) Ltd. This title block is 100mm wide at full scale. Do not scale. Work to figured dimensions only which should be verified on site.