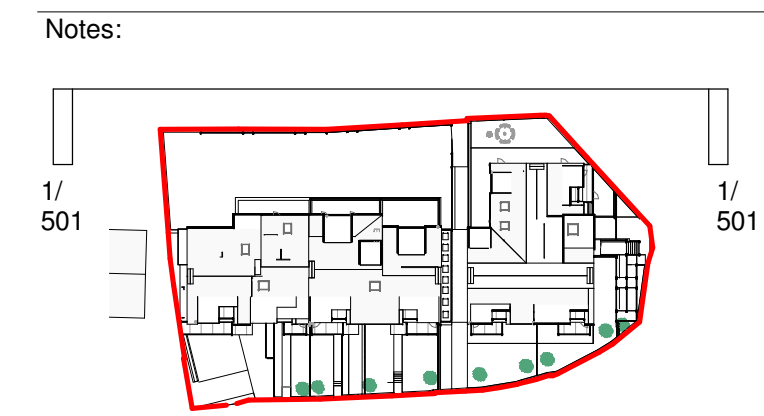
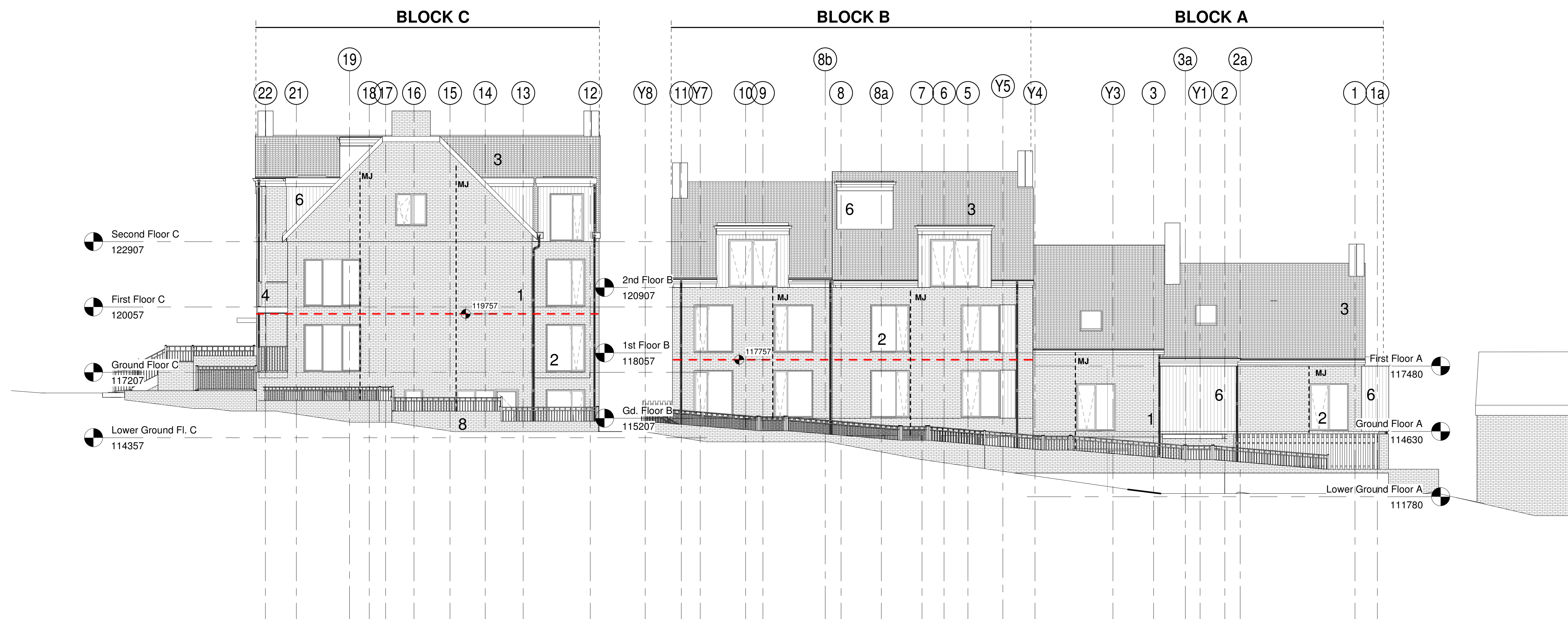


Material Key:

- 1 BRICK
- 2 DOUBLE GLAZED ALUMINIUM WINDOWS
- 3 SLATE ROOF
- 4 BALCONY RAILING GLAZED BALUSTRADE
- 5 TIMBER DOOR
- 6 TIMBER INFILL PANEL/VERTICAL TIMBER CLADDING
- 7 GALVANIZED STEEL REMOTE CONTROLLED GATE
- 8 RETAINING WALL
- 9 WHITE RENDER
- 10 CURTAIN WALL TO THE STAIRCASE



- Notes:
- 1. Downpipes shown indicatively. Layout and flow rate TBC by Contractor.
  - 2. Movement Joints in brick wall TBC by Contractor.
  - 3. Brick Support angle details by Structural Engineer.



|   |          |                                    |    |    |
|---|----------|------------------------------------|----|----|
| H | 14.04.21 | Windows amended to aluminium       | JJ | PB |
| G | 17.03.21 | Block A window updated             | JJ | PB |
| F | 31.08.19 | External flue removed from Block C | EK |    |
| E | 26.07.18 | Windows opening types added        | AP |    |
| D | 23.07.18 | MJs and rainwater pipes added      | AP |    |
| C | 29.06.18 | Levels and Brick support added     | AP |    |
| B | 25.04.18 | General update                     | BK | JJ |
| A | 12.04.18 | Planning Issue                     | BK | JJ |

Rev: Date: Details: By: Chk:



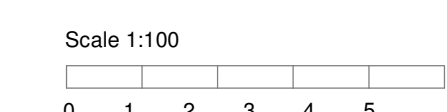
2 Cardinal Street  
Ipswich  
IP1 1LG

CONSTRUCTION

Client / Location:  
2 & 4 Steeplands and 1 & 3  
Claybury

Drawing:  
Proposed Claybury Elevation -  
Blocks A, B & C

|                           |                   |              |              |
|---------------------------|-------------------|--------------|--------------|
| Scale:<br>As<br>indicated | Date:<br>26/03/18 | Drawn:<br>BK | Check:<br>JJ |
| Job No:<br>1701030        | Dwg No:<br>501    | Rev:<br>H    |              |



1 Claybury Elevation - Blocks A, B & C  
1:100