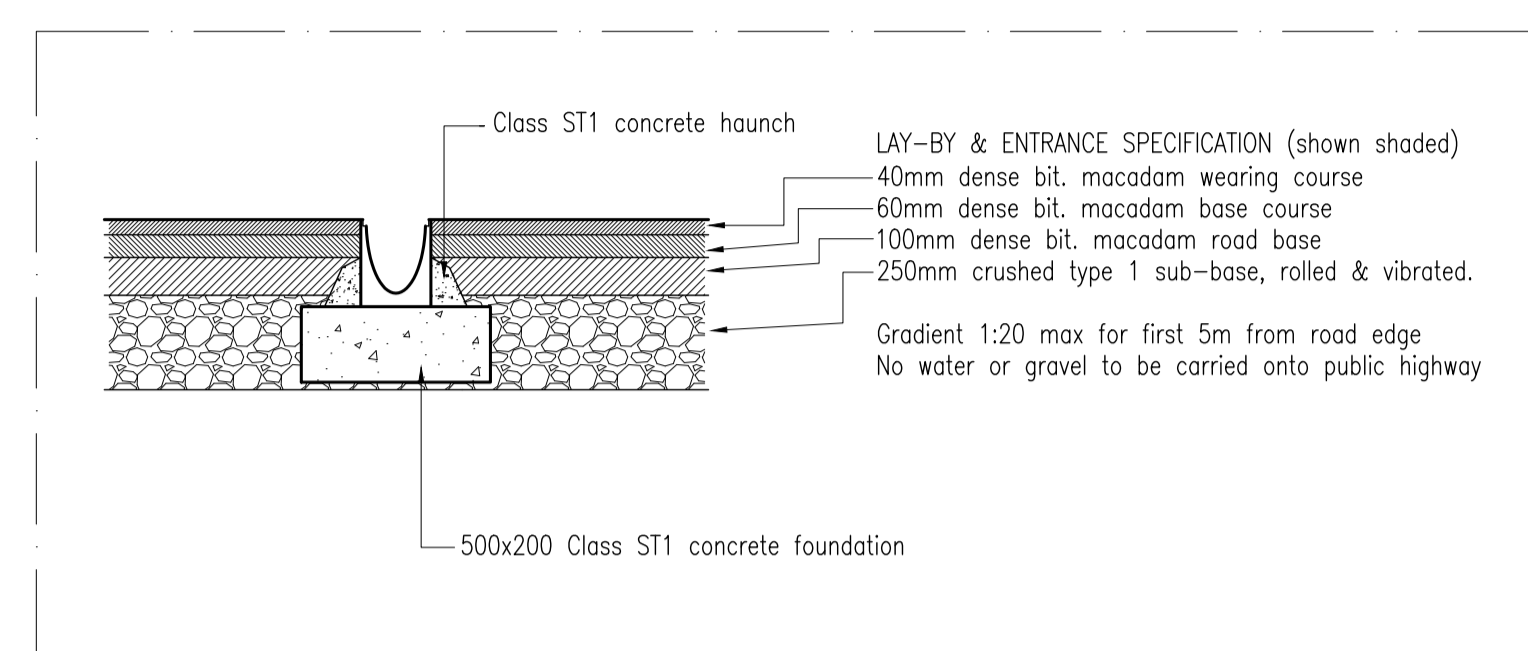


SECTION AA - Centre of access

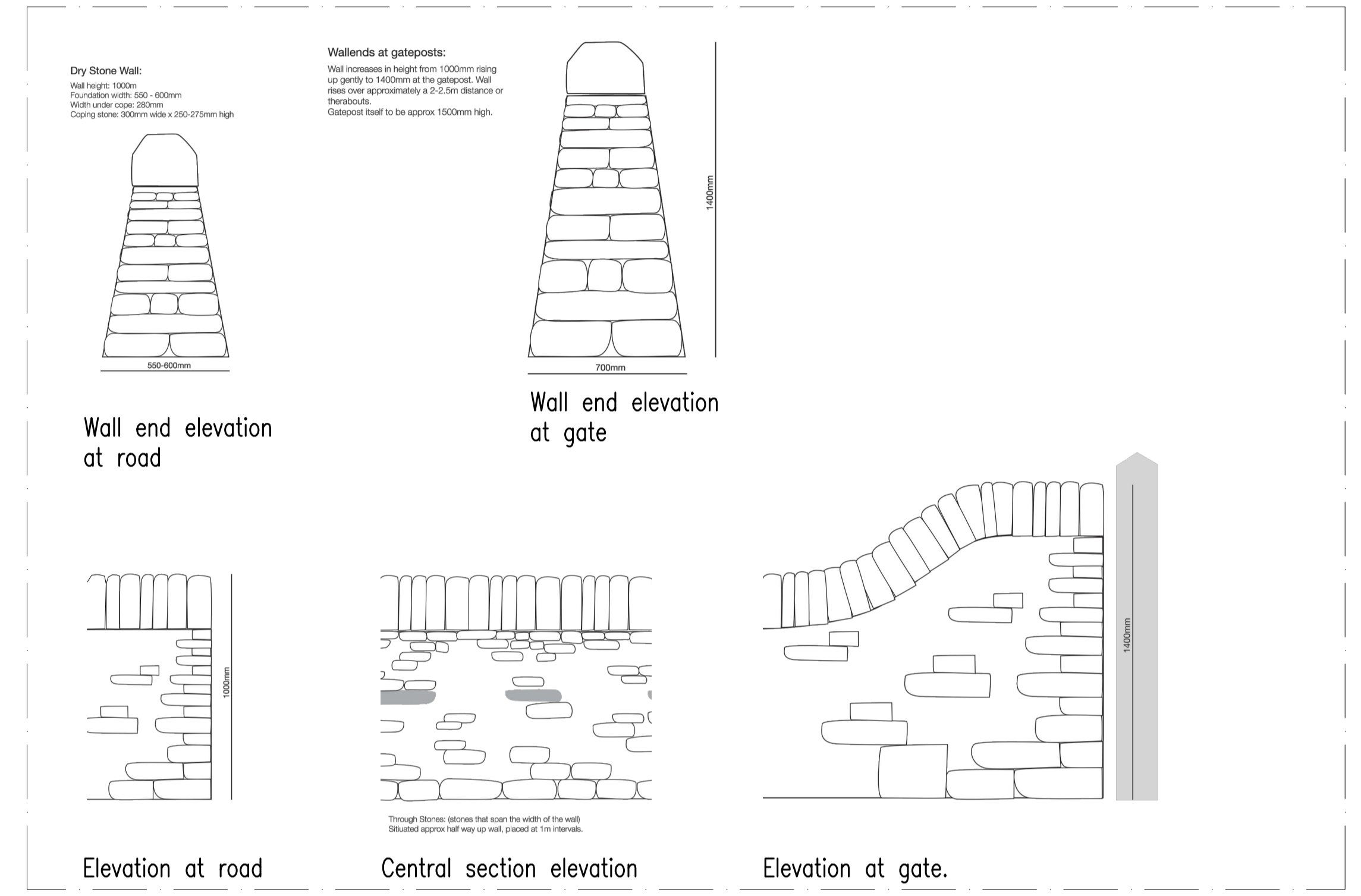
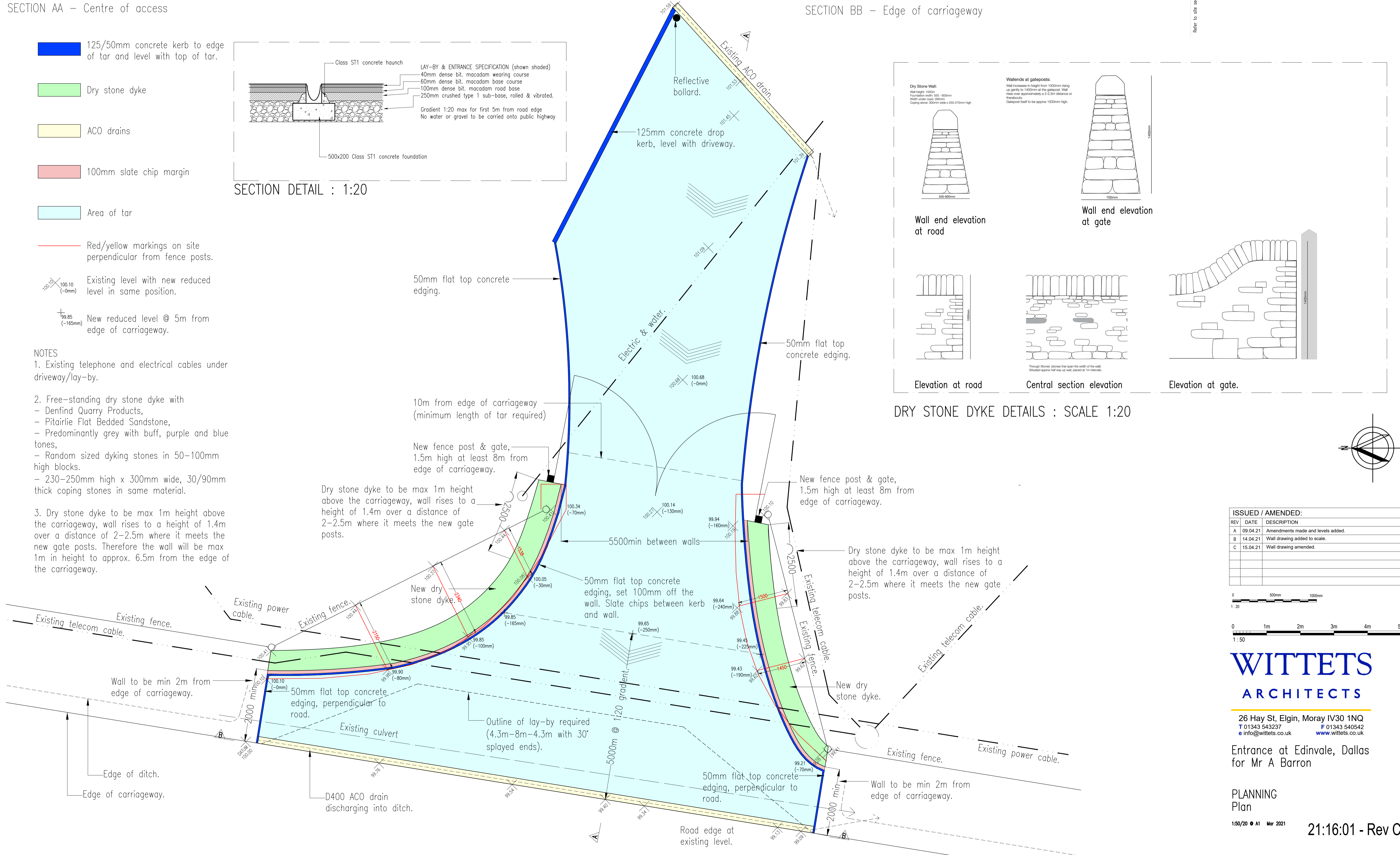
SECTION BB - Edge of carriageway

- 125/50mm concrete kerb to edge of tar and level with top of tar.
- Dry stone dyke
- ACO drains
- 100mm slate chip margin
- Area of tar
- Red/yellow markings on site perpendicular from fence posts.
- Existing level with new reduced level in same position.
- New reduced level @ 5m from edge of carriageway.



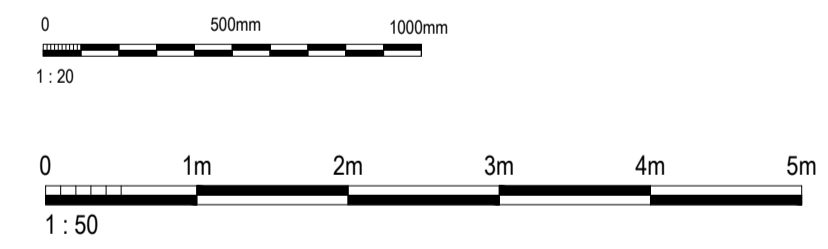
SECTION DETAIL : 1:20

- NOTES**
- Existing telephone and electrical cables under driveway/lay-by.
 - Free-standing dry stone dyke with
 - Denfind Quarry Products,
 - Pitairlie Flat Bedded Sandstone,
 - Predominantly grey with buff, purple and blue tones,
 - Random sized dyking stones in 50-100mm high blocks.
 - 230-250mm high x 300mm wide, 30/90mm thick coping stones in same material.
 - Dry stone dyke to be max 1m height above the carriageway, wall rises to a height of 1.4m over a distance of 2-2.5m where it meets the new gate posts. Therefore the wall will be max 1m in height to approx. 6.5m from the edge of the carriageway.



DRY STONE DYKE DETAILS : SCALE 1:20

ISSUED / AMENDED:		
REV	DATE	DESCRIPTION
A	09.04.21	Amendments made and levels added.
B	14.04.21	Wall drawing added to scale.
C	15.04.21	Wall drawing amended.



WITTETS ARCHITECTS

26 Hay St, Elgin, Moray IV30 1NQ
 T 01343 543237 F 01343 540542
 e info@wittets.co.uk www.wittets.co.uk

Entrance at Edinvale, Dallas for Mr A Barron

PLANNING Plan

1:50/20 ● A1 Mar 2021 21:16:01 - Rev C