

KEY
1/100

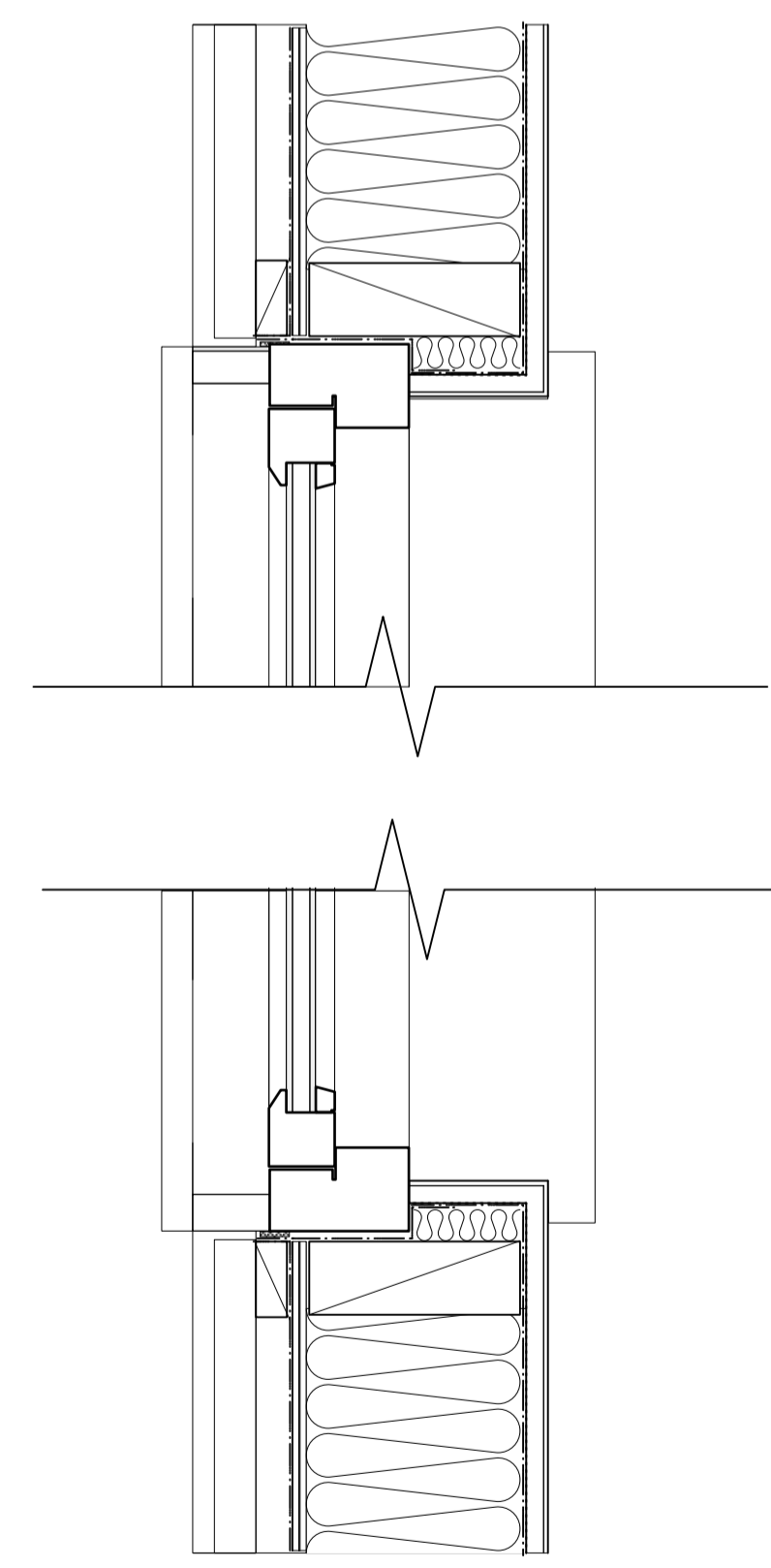
HALF ROUND ZINC GUTTERS TO REPLACE ALL EXISTING.
 RAFTER FEET EXPOSED AND GUTTERS SUSPENDED FROM RAFTER BRACKETS.
 REVEAL BOARDS TO THE HEAD AND JAMBS OF WINDOWS. FRAME SEALED WITH COMPRIBAND TAPE AS REQUIRED.

DOUBLE GLAZED SLIMLITE UNITS.
 TREATED ACCOYA TIMBER SIDE HUNG CASEMENT
 TREATED ACCOYA TIMBER GILL
 MEMBRANE TO LAP UNDERNEATH TIMBER GILL. MASTIC SEAL IF REQUIRED TO PREVENT WATER INGRESS.

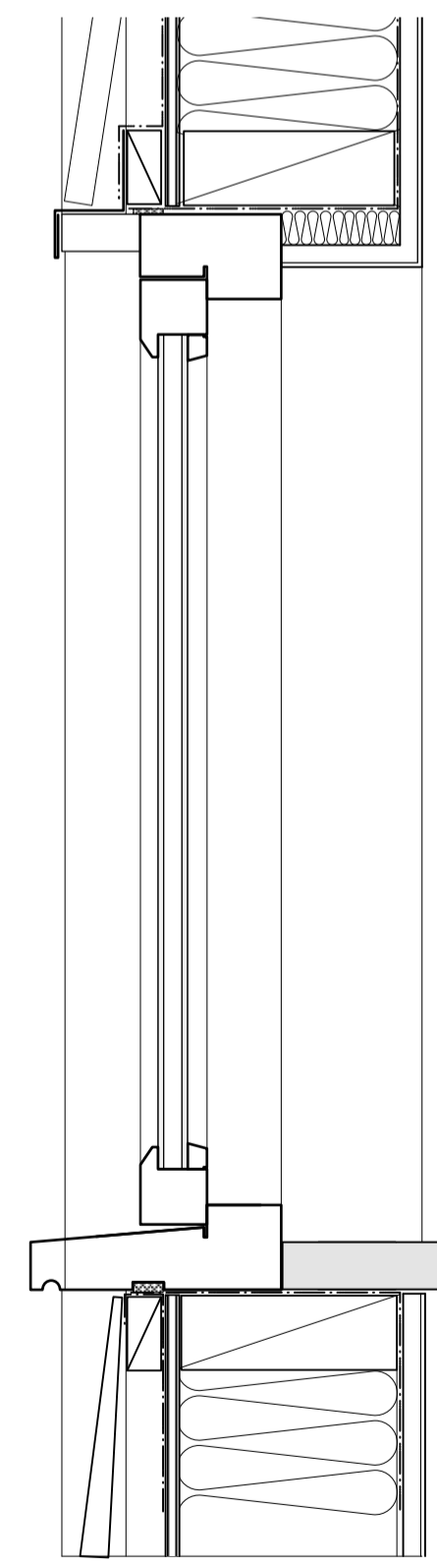
WINDOW SECTION DETAIL
1/5

STAINLESS STEEL FRAMED ROOFLIGHT IN 316 STAINLESS STEEL WITH SOLAR CONTROL GLASS. ROOFLIGHT TO REQUIRE ELECTRICITY CONNECTION FOR MOTORISED OPENING.

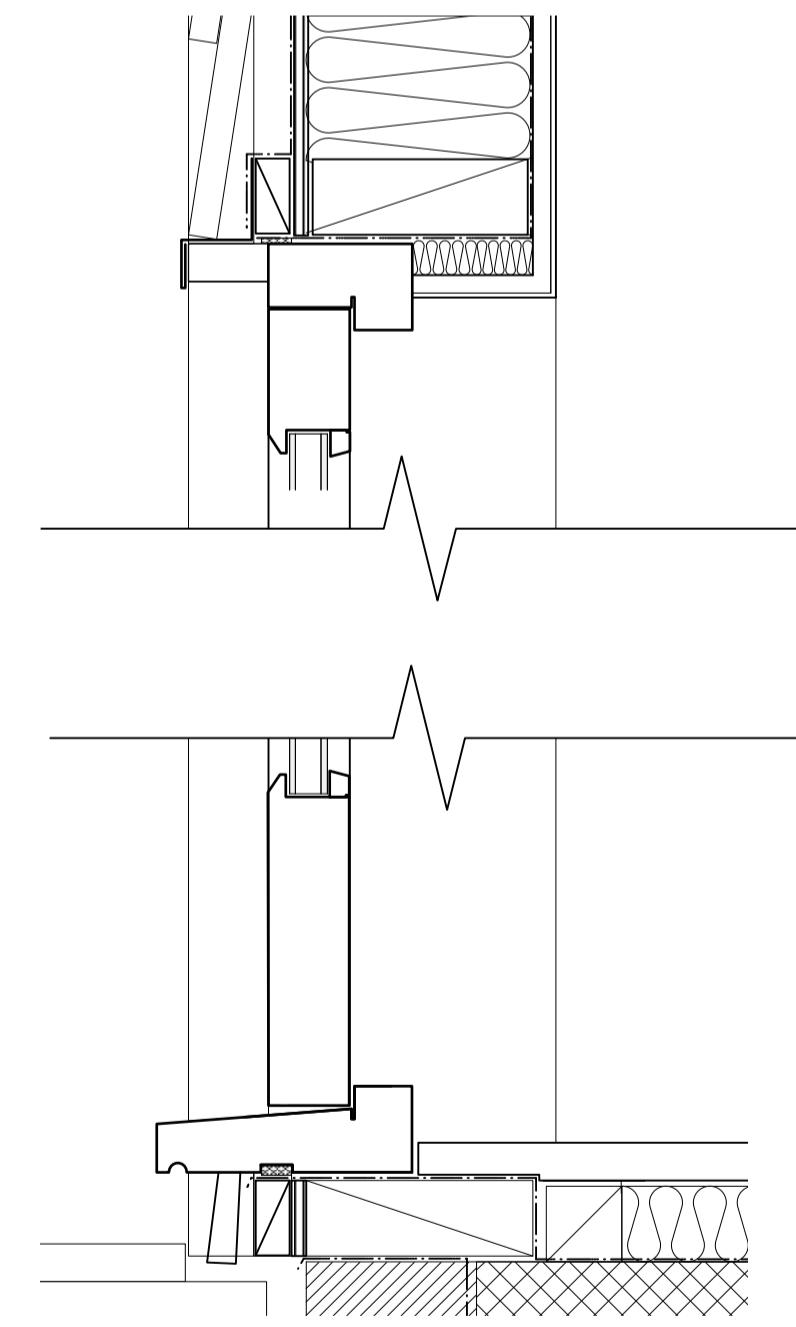
ROOFLIGHT SECTION DETAIL
1/5



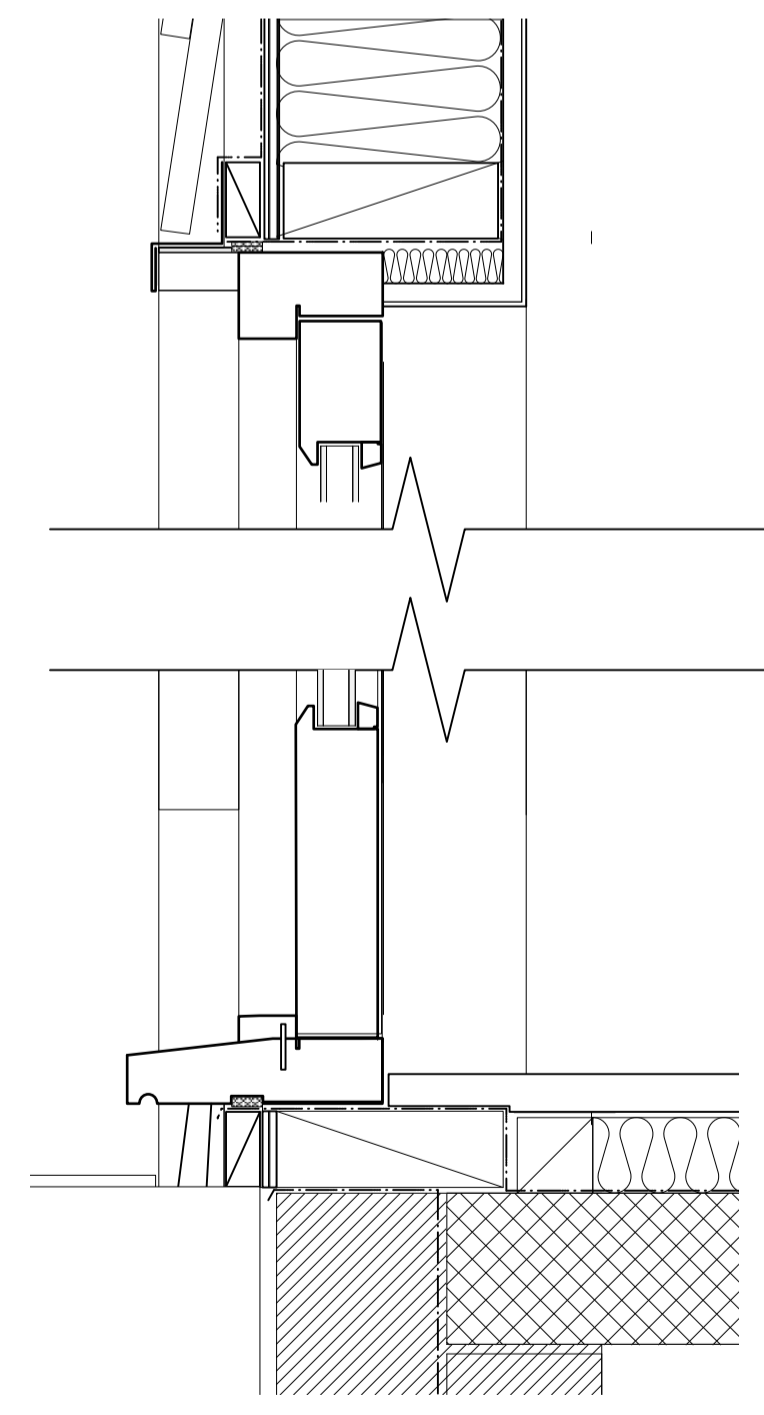
WINDOW JAMB DETAIL.
1/5



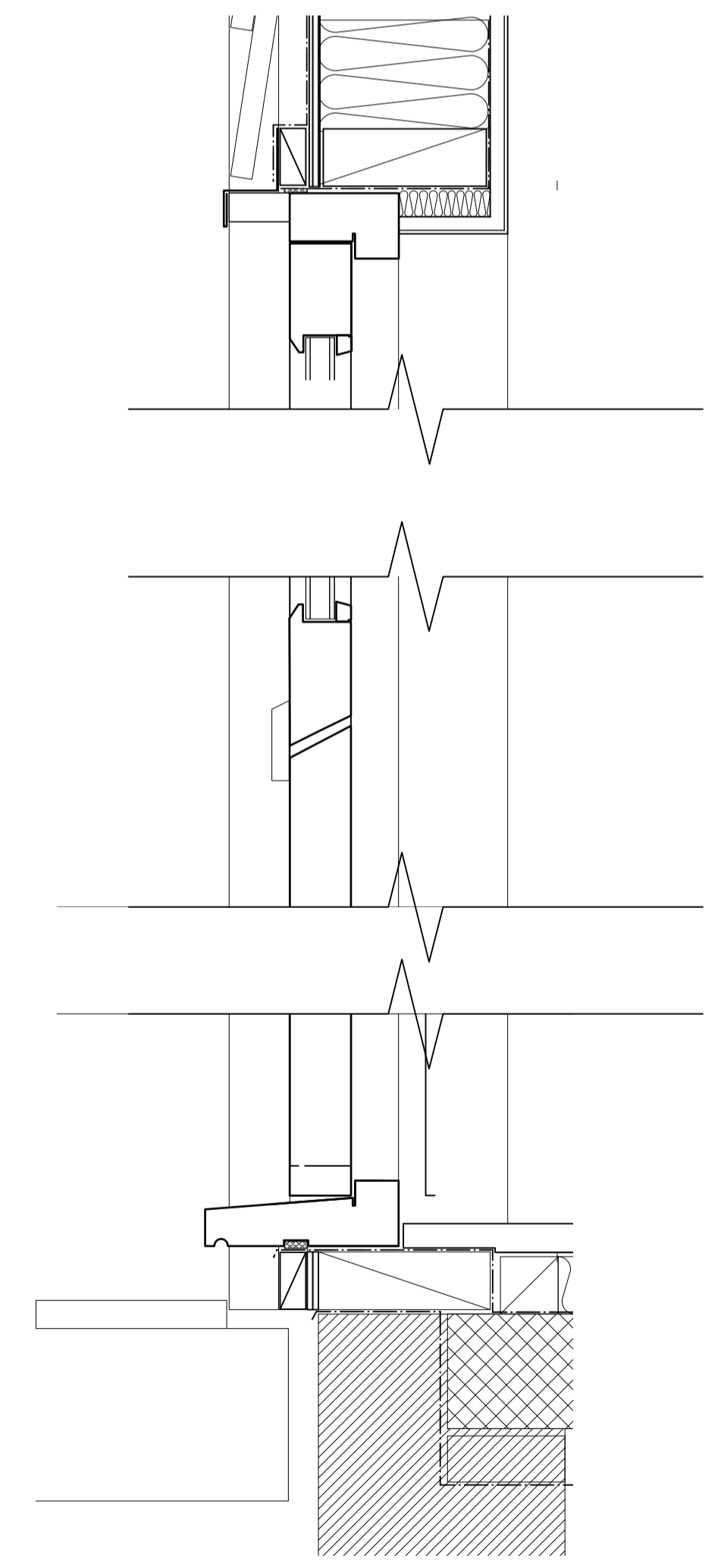
WINDOW SECTION DETAIL - GABLE END
1/5



DOOR SECTION DETAIL - OUTWARD OPENING
1/5



DOOR SECTION DETAIL - INWARD OPENING
1/5



STABLE DOOR SECTION - OUTWARD OPENING.
1/5