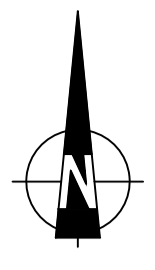


Appendix G Internal Site Drawings



Reproduced from based upon Ordnance Survey material with the permission of Ordnance Survey © on behalf of The Controller of Her Majesty's Stationery Office. © Crown Copyright. Unauthorised reproduction infringes Crown Copyright and may lead to prosecution or civil proceedings. Licence No. Year of Publication Owner/Purchaser of Mapping

M	JTP masterplan updated	13.09.19	REM	JSL	JSL
L	Highway layout revised	25.07.19	REM	JSL	JSL
K	Highway layout revised and JTP master plan updated	14.06.19	REM	JSL	JSL
J	Highway layout revised and school drop off added	17.05.19	REM	JSL	JSL
H	Penny Rd bus stop location revised & Fort Rd footway added	03.04.19	REM	RAP	RAP
G	JTP masterplan and highway layout updated	02.04.19	REM	RAP	RAP
F	Highway layout updated	15.03.19	REM	RAP	RAP
E	JTP masterplan and highway layout updated	13.03.19	REM	-	-
D	JTP masterplan updated	12.02.19	REM	-	-
C	Traffic calming features revised	18.01.19	REM	RAP	RAP
B	JTP masterplan updated and traffic calming features added	21.12.18	REM	-	-
A	JTP masterplan updated	17.10.18	REM	-	-
Mark	Revision	Date	Drawn	Chkd	Appd

SCALING NOTE: Do not scale from this drawing. If in doubt, ask.
 UTILITIES NOTE: The position of any existing public or private sewers, utility services, plant or apparatus shown on this drawing is believed to be correct, but no warranty to this is expressed or implied. Other such plant or apparatus may also be present but not shown. The Contractor is therefore advised to undertake his own investigation where the presence of any existing sewers, services, plant or apparatus may affect his operations.

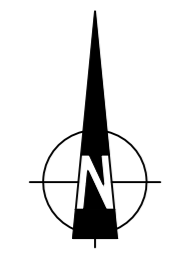
Drawing Issue Status

FOR INFORMATION

**FORT HALSTEAD, KENT
INDICATIVE MASTERPLAN**

Client			
MERSEYSIDE PENSION FUND			
Date of 1st Issue	Designed	Drawn	REM
27.09.2018			
AD Scale	Checked	Approved	RAP
1:2500			
Drawing Number	London	Revision	
41290/5501/009		M	

© Peter Brett Associates LLP
Tel: 020 7566 8600



M	JTP masterplan updated	13.09.19	REM	JSL	JSL
L	Highway layout revised	25.07.19	REM	JSL	JSL
K	Highway layout revised and JTP master plan updated	14.06.19	REM	JSL	JSL
J	Highway layout revised and school drop off added	17.05.19	REM	JSL	JSL
H	Penny Rd bus stop location revised & Fort Rd footway added	03.04.19	REM	RAP	RAP
G	JTP masterplan and highway layout updated	02.04.19	REM	RAP	RAP
F	Highway layout updated	15.03.19	REM	RAP	RAP
E	JTP masterplan and highway layout updated	13.03.19	REM	-	-
D	JTP masterplan updated	12.02.19	REM	-	-
C	Traffic calming features revised	18.01.19	REM	RAP	RAP
B	JTP masterplan updated and traffic calming features added	21.12.18	REM	-	-
A	JTP masterplan updated	18.10.18	REM	-	-
Mark	Revision	Date	Drawn	Chkd	Appd

SCALING NOTE: Do not scale from this drawing. If in doubt, ask.
 UTILITIES NOTE: The position of any existing public or private sewers, utility services, plant or apparatus shown on this drawing is believed to be correct, but no warranty is made as to its accuracy or completeness. Other such plant or apparatus may also be present but not shown. The Contractor is therefore advised to undertake his own investigation where the presence of any existing sewers, services, plant or apparatus may affect his operations.

Drawing Issue Status: **FOR INFORMATION**

**FORT HALSTEAD, KENT
 PROPOSED HIGHWAY LAYOUT
 SHEET 1 OF 2**

Client
MERSEYSIDE PENSION FUND

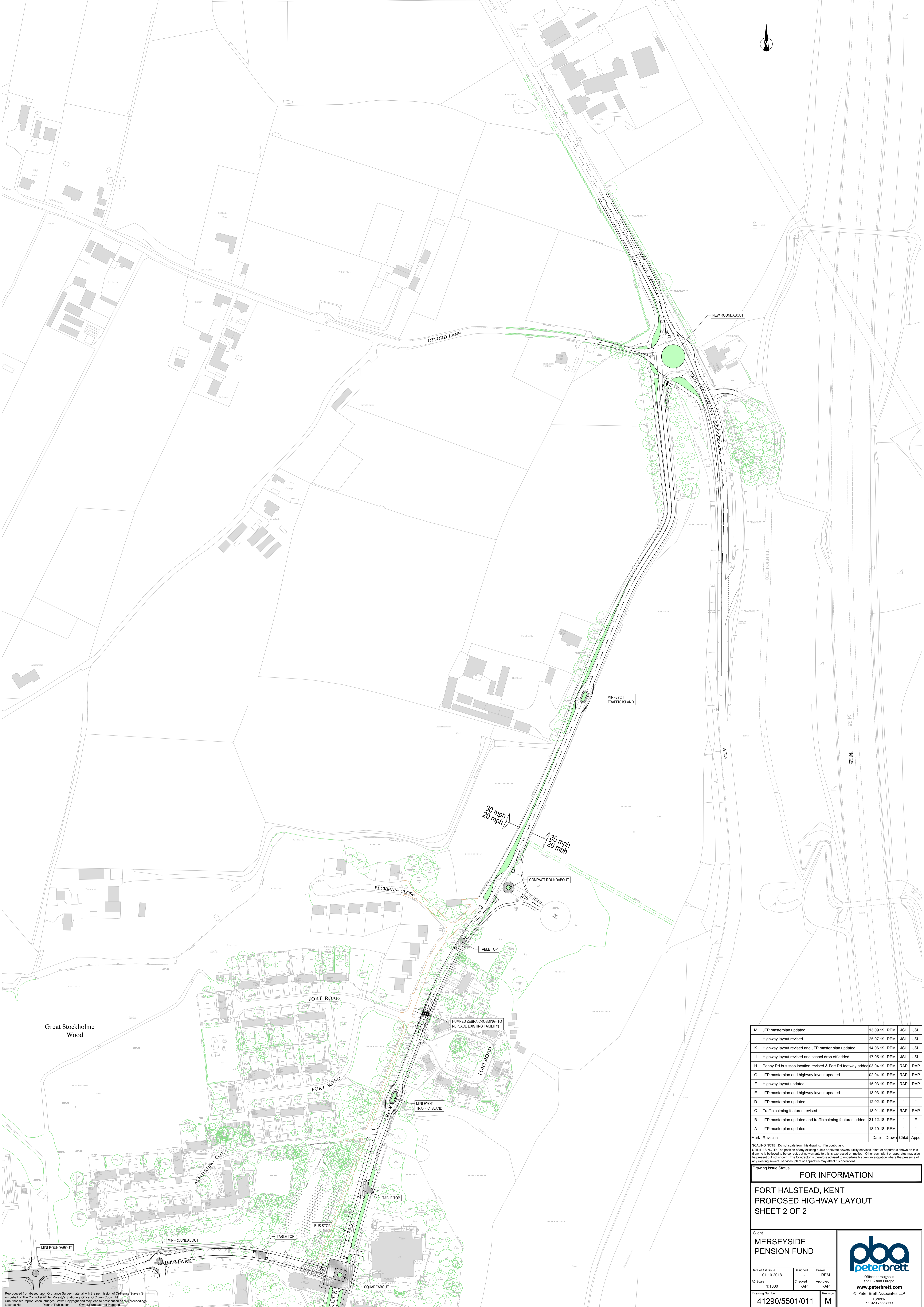
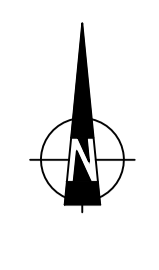
Date of 1st Issue: 01.10.2018
 A0 Scale: 1:1000

Designed	REM
Checked	RAP
Approved	RAP

Drawing Number: **41290/5501/010**
 Revision: **M**

pba peterbrett
 Offices throughout the UK and Europe
 www.peterbrett.com
 Peter Brett Associates LLP
 London
 Tel: 020 7556 8800

Reproduced from based upon Ordnance Survey mapping with the permission of Ordnance Survey on behalf of The Controller of Her Majesty's Stationery Office. © Crown Copyright. Unauthorised reproduction infringes Crown Copyright and may lead to prosecution or civil proceedings. Licence No. [unreadable]



M	JTP masterplan updated	13.09.19	REM	JSL	JSL
L	Highway layout revised	25.07.19	REM	JSL	JSL
K	Highway layout revised and JTP master plan updated	14.06.19	REM	JSL	JSL
J	Highway layout revised and school drop off added	17.05.19	REM	JSL	JSL
H	Penny Rd bus stop location revised & Fort Rd footway added	03.04.19	REM	RAP	RAP
G	JTP masterplan and highway layout updated	02.04.19	REM	RAP	RAP
F	Highway layout updated	15.03.19	REM	RAP	RAP
E	JTP masterplan and highway layout updated	13.03.19	REM	-	-
D	JTP masterplan updated	12.02.19	REM	-	-
C	Traffic calming features revised	18.01.19	REM	RAP	RAP
B	JTP masterplan updated and traffic calming features added	21.12.18	REM	-	-
A	JTP masterplan updated	18.10.18	REM	-	-
Mark	Revision	Date	Drawn	Chkd	Appd

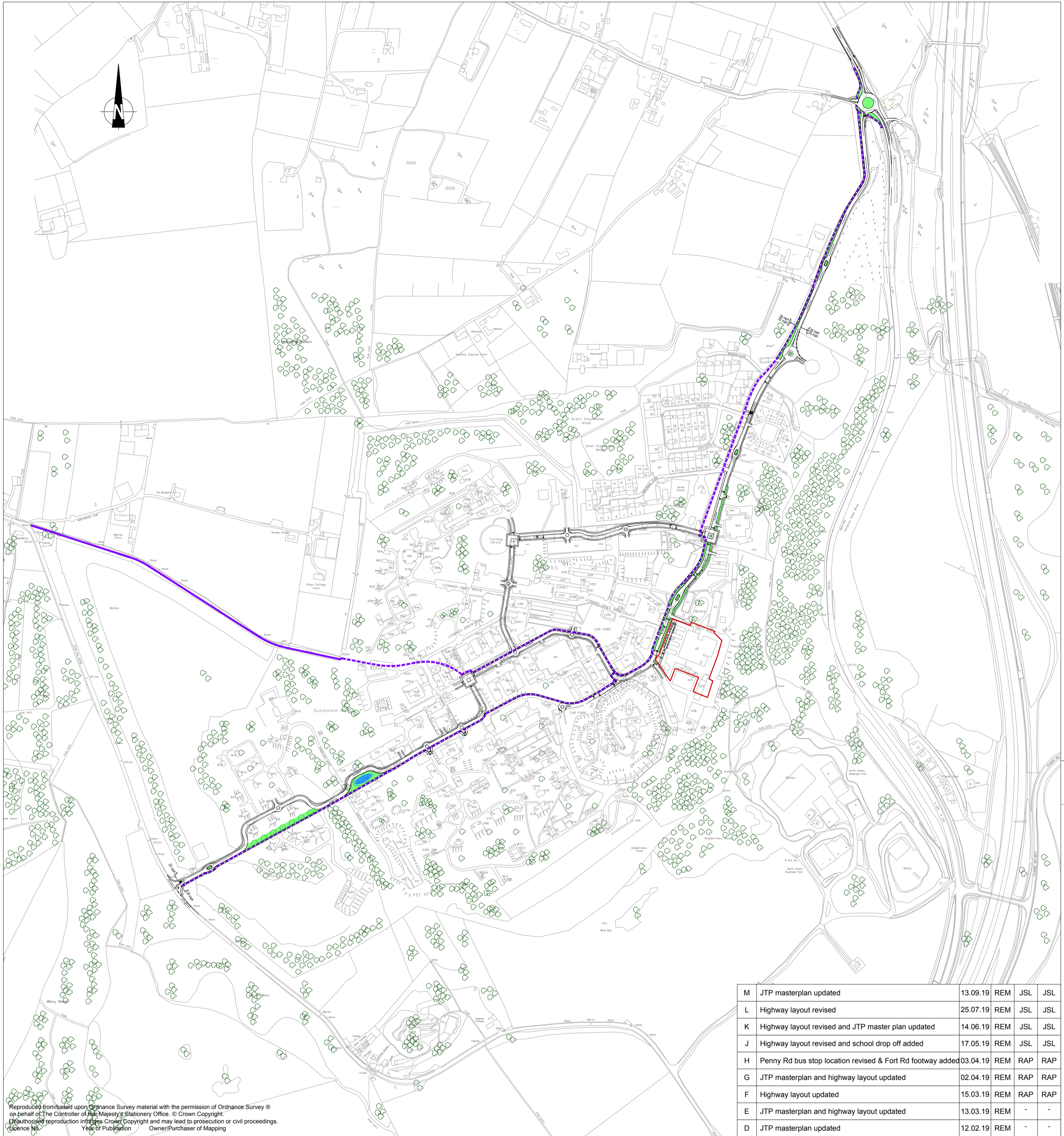
SCALING NOTE: Do not scale from this drawing. If in doubt, ask.
 UTILITIES NOTE: The position of any existing public or private sewers, utility services, plant or apparatus shown on this drawing is believed to be correct, but no warranty is made as to its accuracy or completeness. Other such plant or apparatus may also be present but not shown. The Contractor is therefore advised to undertake his own investigation where the presence of any existing sewers, services, plant or apparatus may affect his operations.

FOR INFORMATION
**FORT HALSTEAD, KENT
 PROPOSED HIGHWAY LAYOUT
 SHEET 2 OF 2**

Client		
MERSEYSIDE PENSION FUND		
Date of first issue	Designed	Drawn
01.10.2018	REM	REM
As Scale	Checked	Approved
1:1000	RAP	RAP
Drawing Number	Revision	
41290/5501/011	M	



Reproduced from based upon Ordnance Survey material with the permission of Ordnance Survey © on behalf of the Controller of Her Majesty's Stationery Office. © Crown Copyright. Unauthorized reproduction infringes Crown Copyright and may lead to prosecution or civil proceedings. Licence No. Year of Publication. Owner/Purchaser of Mapping.



Reproduced from/based upon Ordnance Survey material with the permission of Ordnance Survey © on behalf of The Controller of Her Majesty's Stationery Office. © Crown Copyright. Unauthorised reproduction infringes Crown Copyright and may lead to prosecution or civil proceedings. Licence No. Year of Publication Owner/Purchaser of Mapping

M	JTP masterplan updated	13.09.19	REM	JSL	JSL
L	Highway layout revised	25.07.19	REM	JSL	JSL
K	Highway layout revised and JTP master plan updated	14.06.19	REM	JSL	JSL
J	Highway layout revised and school drop off added	17.05.19	REM	JSL	JSL
H	Penny Rd bus stop location revised & Fort Rd footway added	03.04.19	REM	RAP	RAP
G	JTP masterplan and highway layout updated	02.04.19	REM	RAP	RAP
F	Highway layout updated	15.03.19	REM	RAP	RAP
E	JTP masterplan and highway layout updated	13.03.19	REM	-	-
D	JTP masterplan updated	12.02.19	REM	-	-
C	Cycle routes updated	18.01.19	REM	RAP	RAP
B	JTP masterplan updated and traffic calming features added	21.12.18	REM	-	-
A	JTP masterplan updated	18.10.18	REM	-	-
Mark	Revision	Date	Drawn	Chkd	Appd

SCALING NOTE: Do not scale from this drawing. If in doubt, ask.
 UTILITIES NOTE: The position of any existing public or private sewers, utility services, plant or apparatus shown on this drawing is believed to be correct, but no warranty to this is expressed or implied. Other such plant or apparatus may also be present but not shown. The Contractor is therefore advised to undertake his own investigation where the presence of any existing sewers, services, plant or apparatus may affect his operations.

Drawing Issue Status
FOR INFORMATION

FORT HALSTEAD, KENT POTENTIAL CYCLE ROUTES

Client
**MERSEYSIDE
 PENSION FUND**

Date of 1st Issue 27.09.2018	Designed -	Drawn REM
A2 Scale 1:5,000	Checked RAP	Approved RAP

Drawing Number 41290/5501/012	Revision M
---	----------------------



Offices throughout
 the UK and Europe
www.peterbrett.com
 © Peter Brett Associates LLP
 LONDON
 Tel: 020 7566 8600