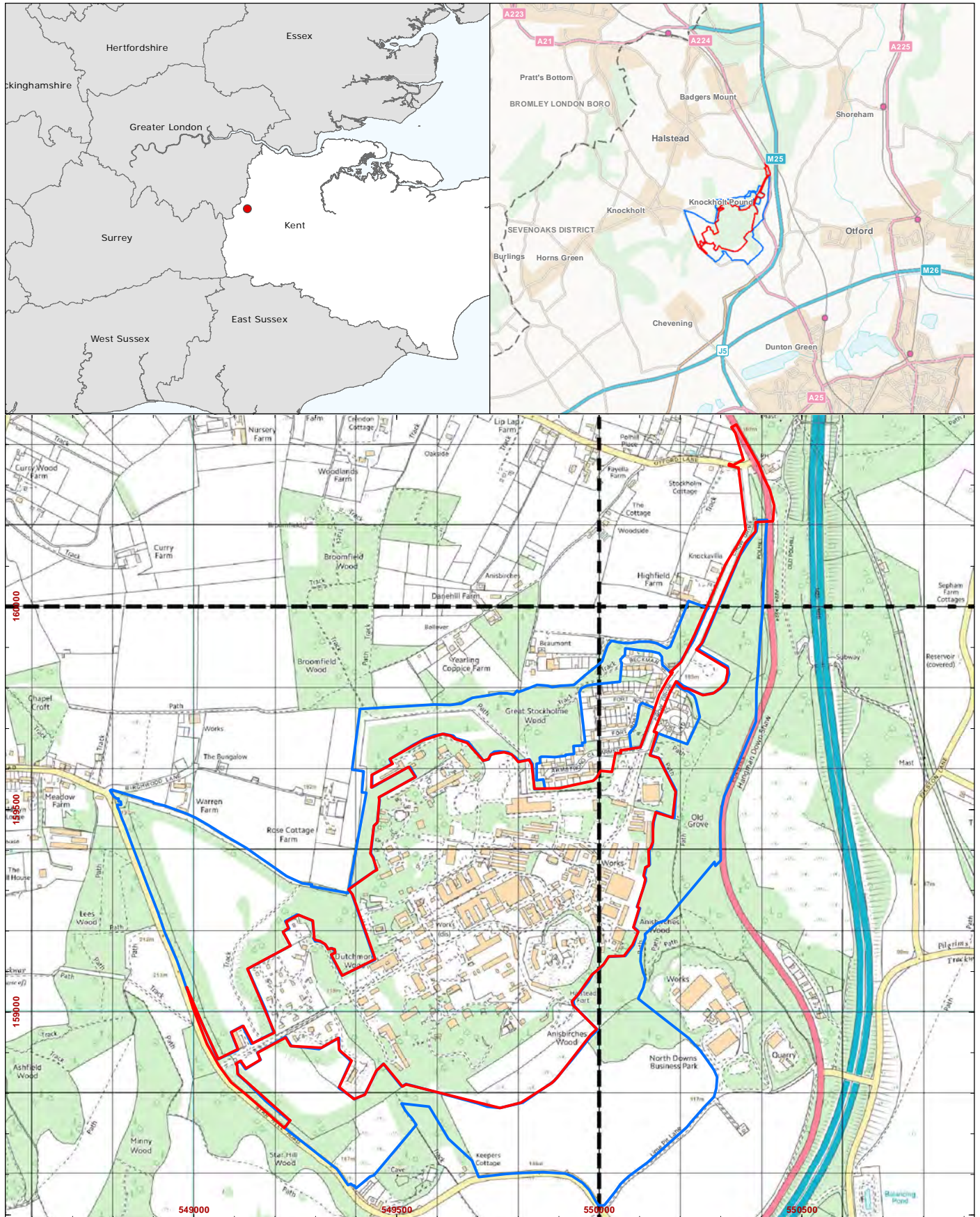


**FIGURES**



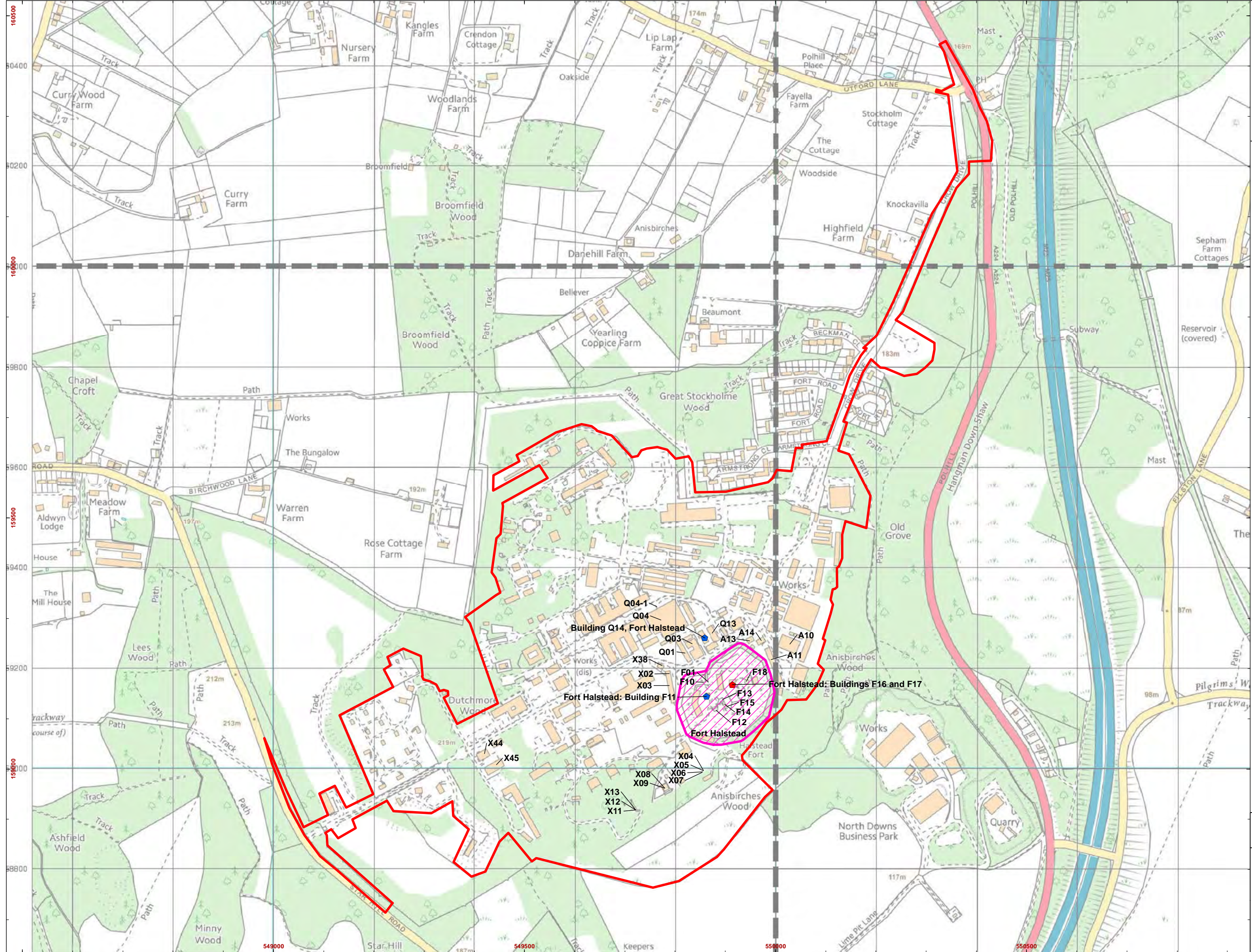
- Application Boundary
- Current Ownership Boundary



Scale at A4: 1:13,000

0 300m

Figure 1:  
Site Location



Site Boundary

Designated Heritage Assets:

Scheduled Monuments

Listed Buildings

Grade

II\*

II



Scale at A3: 1:7,000

0 200m

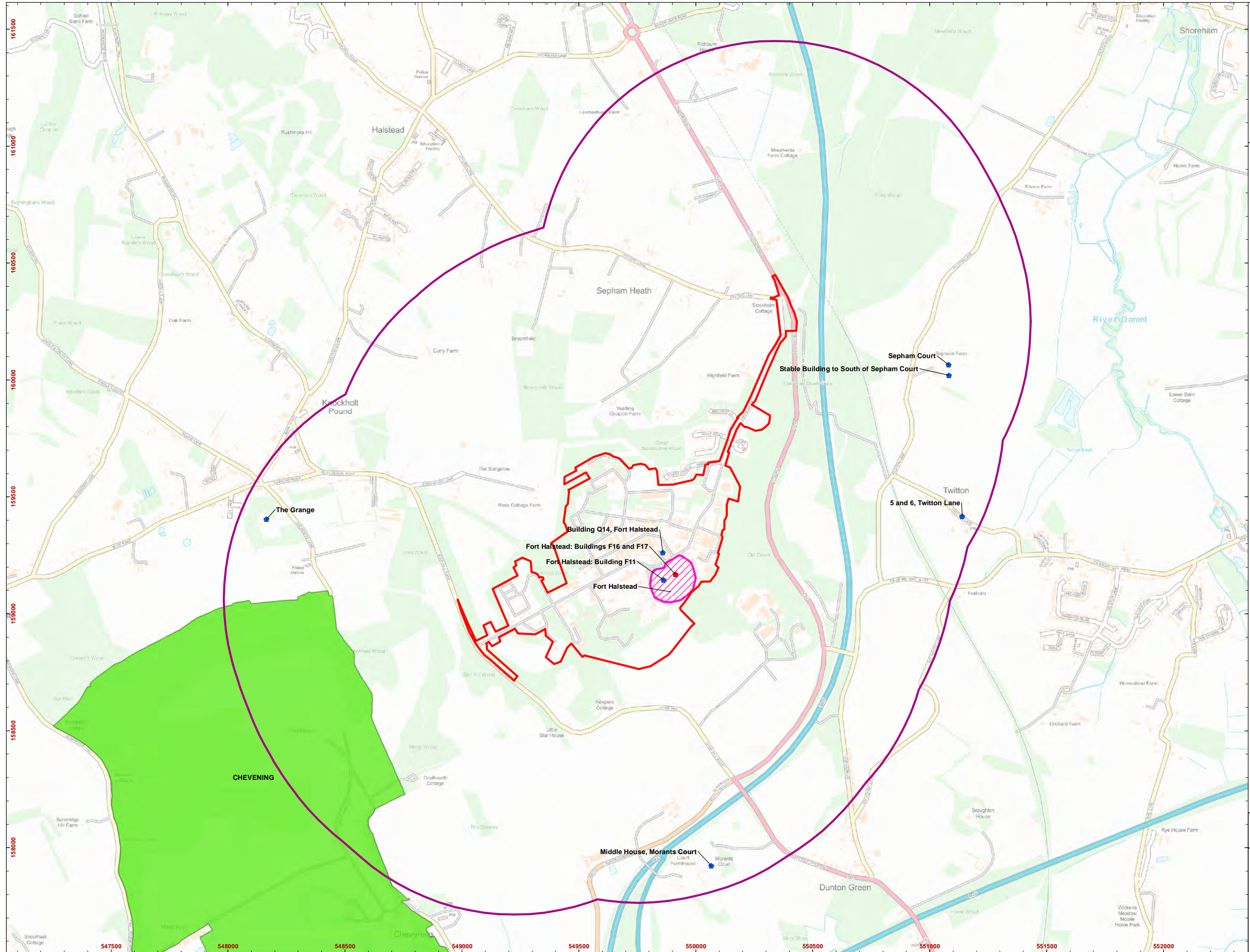
Figure 2a:  
Identified Heritage Assets within the Site



- Site Boundary
- 1km search radius

Designated Heritage Assets:

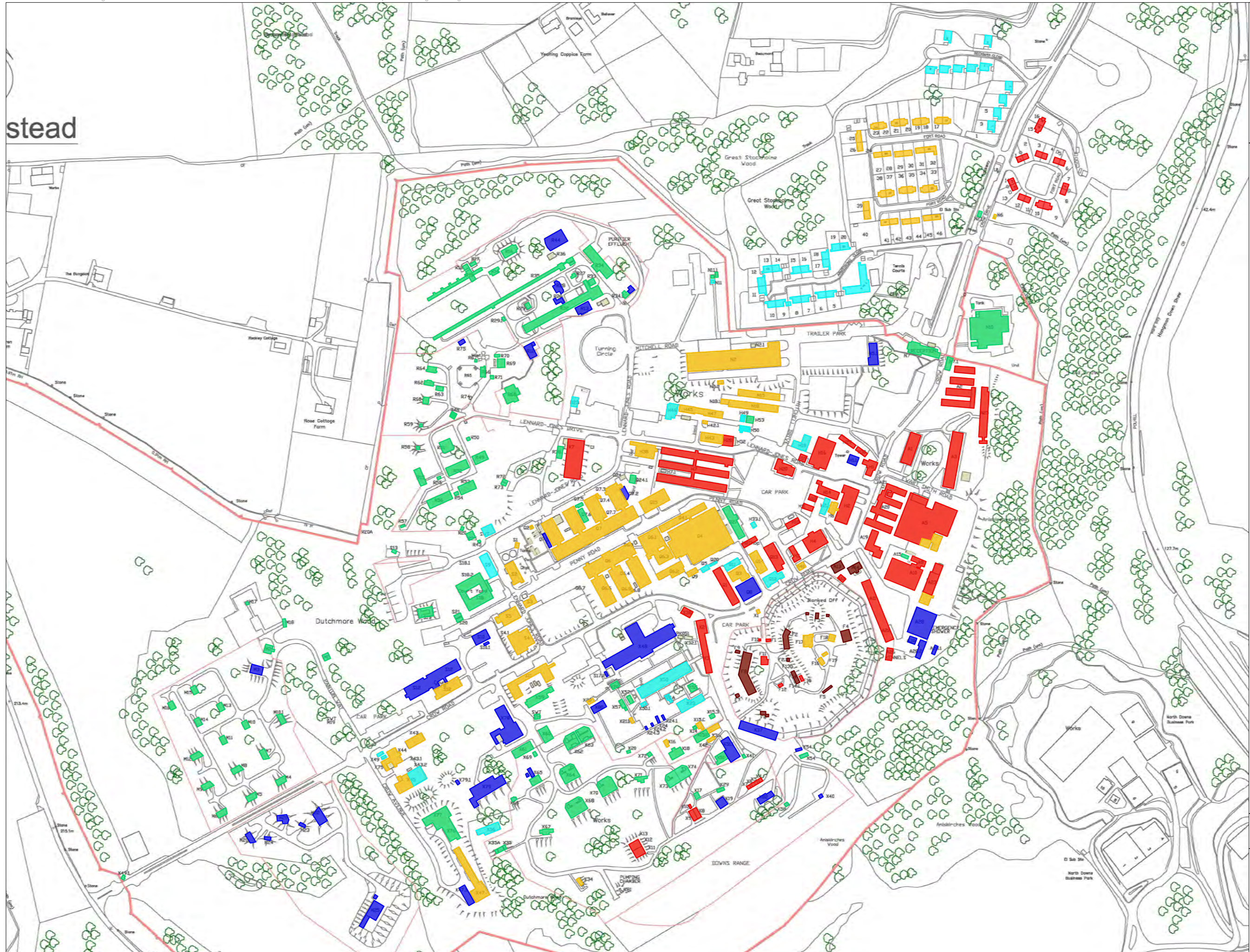
- Scheduled Monuments
- RPG
- Listed Buildings Grade**
- II\*
- II



Scale at A3: 1:15,000



Figure 2b:  
Designated Heritage Assets within a 1km search radius

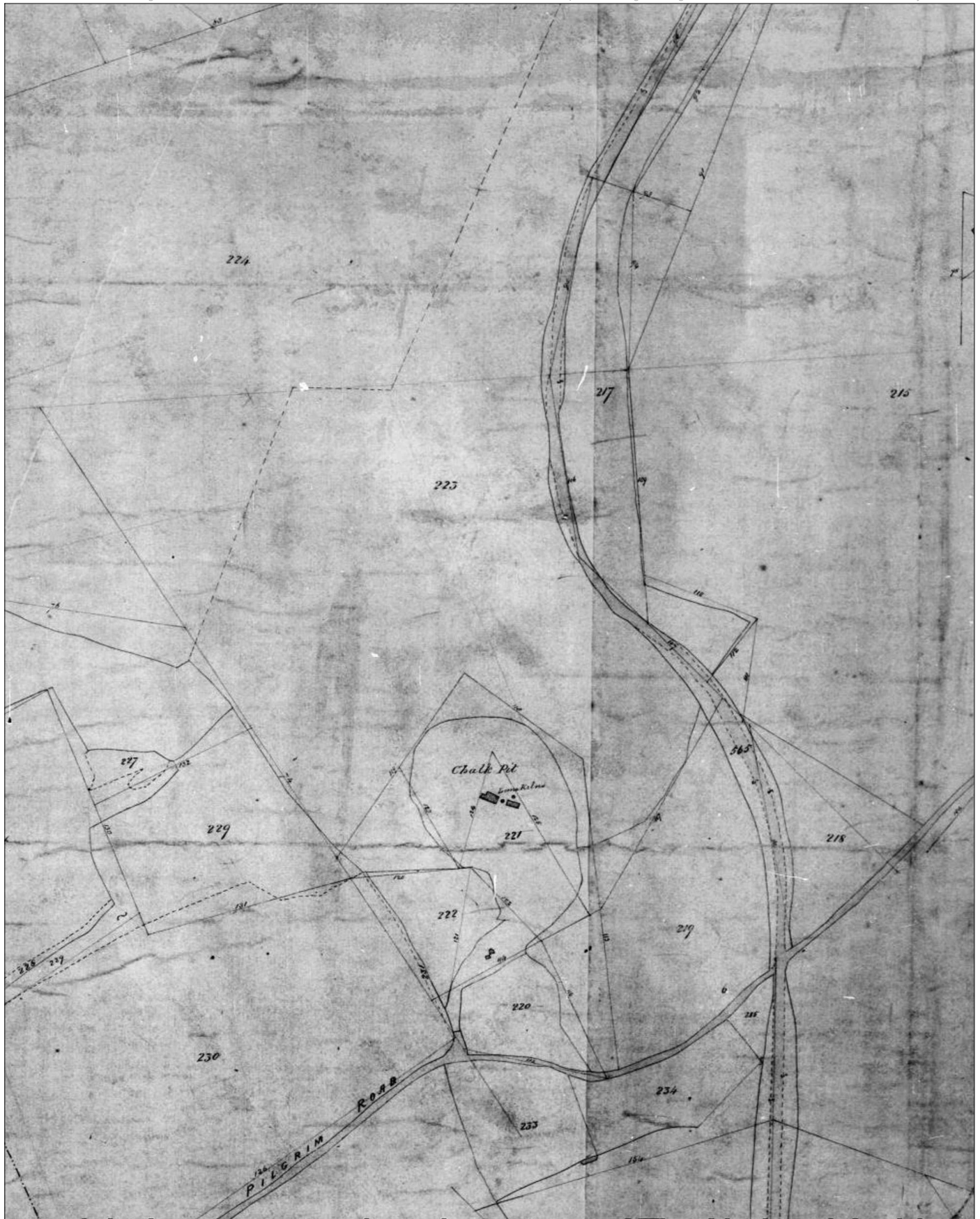


- Pre-1936
- 1936-1947
- 1947-1953
- 1953-1962
- 1962-1986
- 1986-present



Scale @ A3:  
1:4500  
0 150 m

Figure 3:  
Historic Development Plan



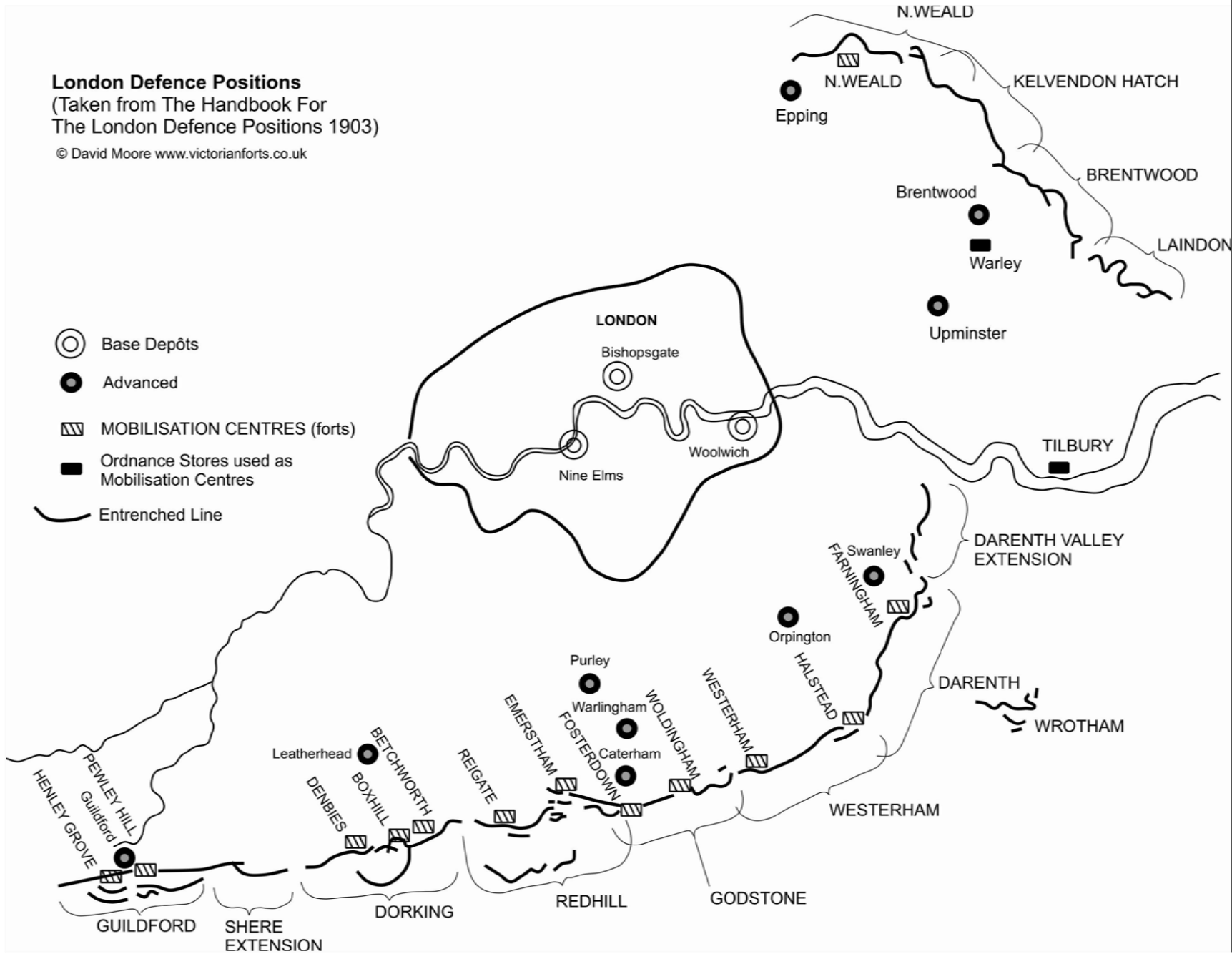
Not to Scale:  
Illustrative Only

Figure 4:  
1844 Otford Tithe Map

**London Defence Positions**  
(Taken from The Handbook For  
The London Defence Positions 1903)

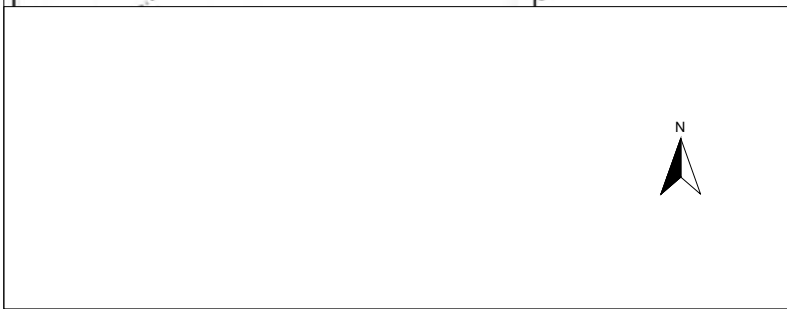
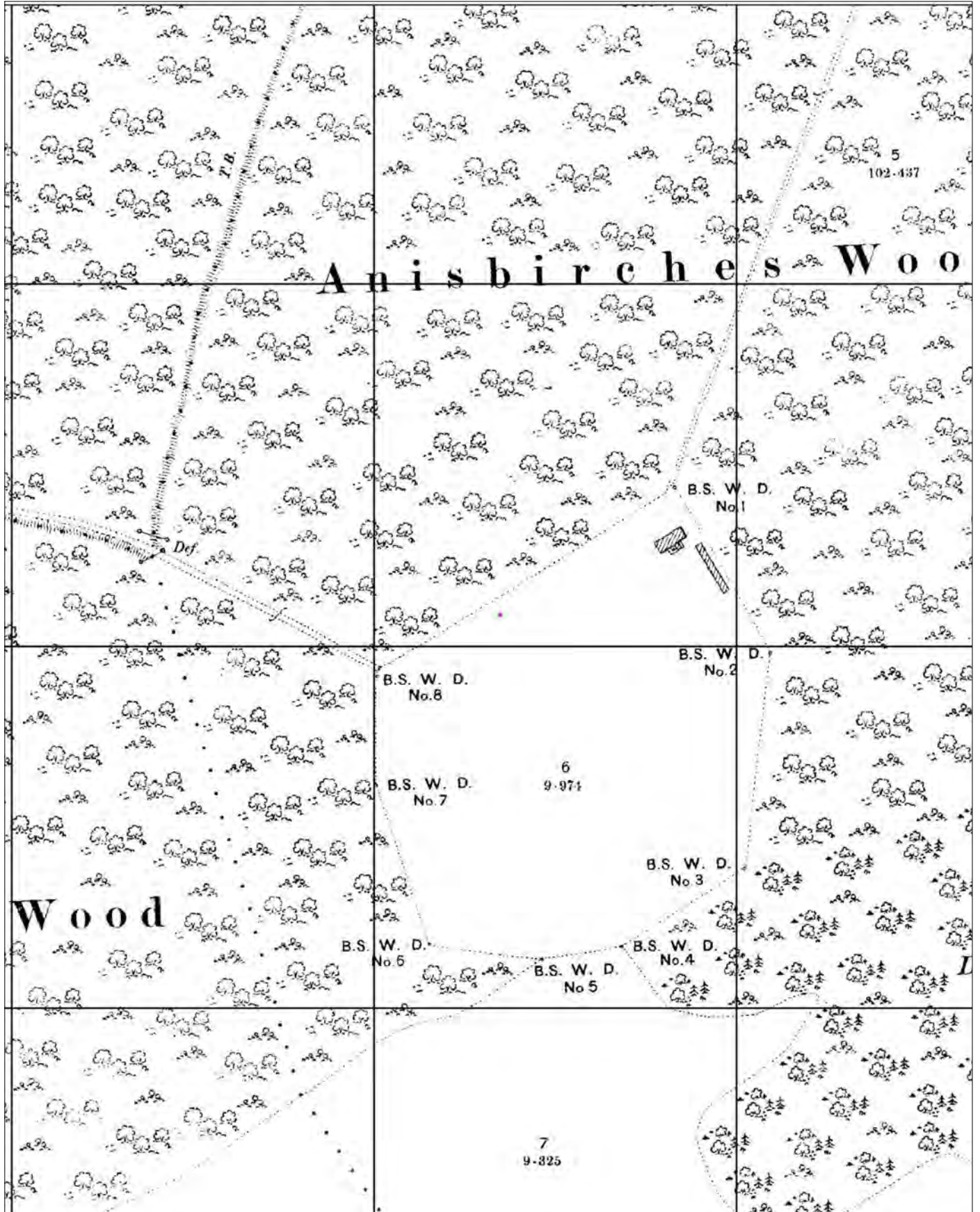
© David Moore www.victorianforts.co.uk

-  Base Depôts
-  Advanced
-  MOBILISATION CENTRES (forts)
-  Ordnance Stores used as Mobilisation Centres
-  Entrenched Line



Not to Scale:  
Illustrative Only

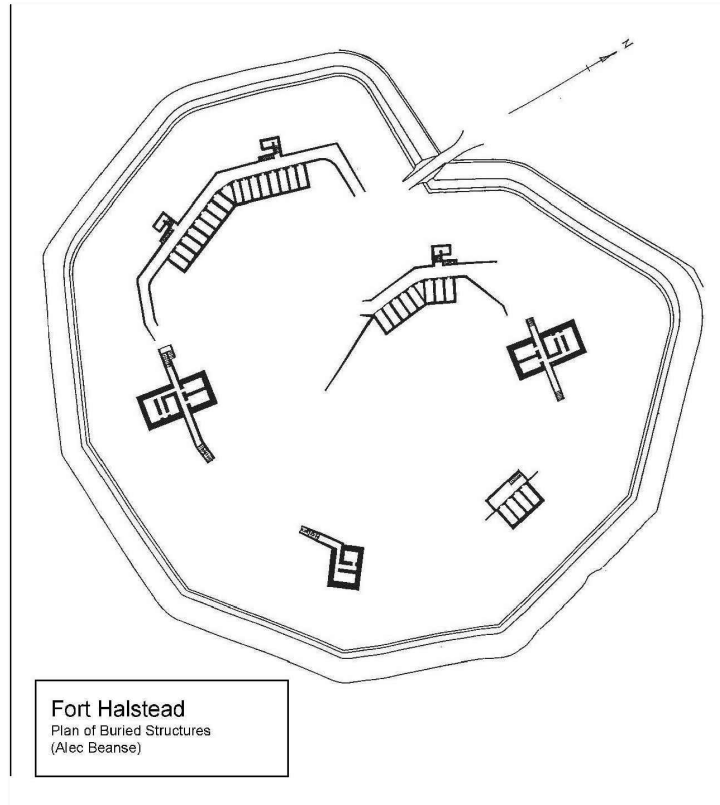
Figure 5:  
The London Mobilisation Centres (Source: David Moore *The London Mobilisation Centres*)



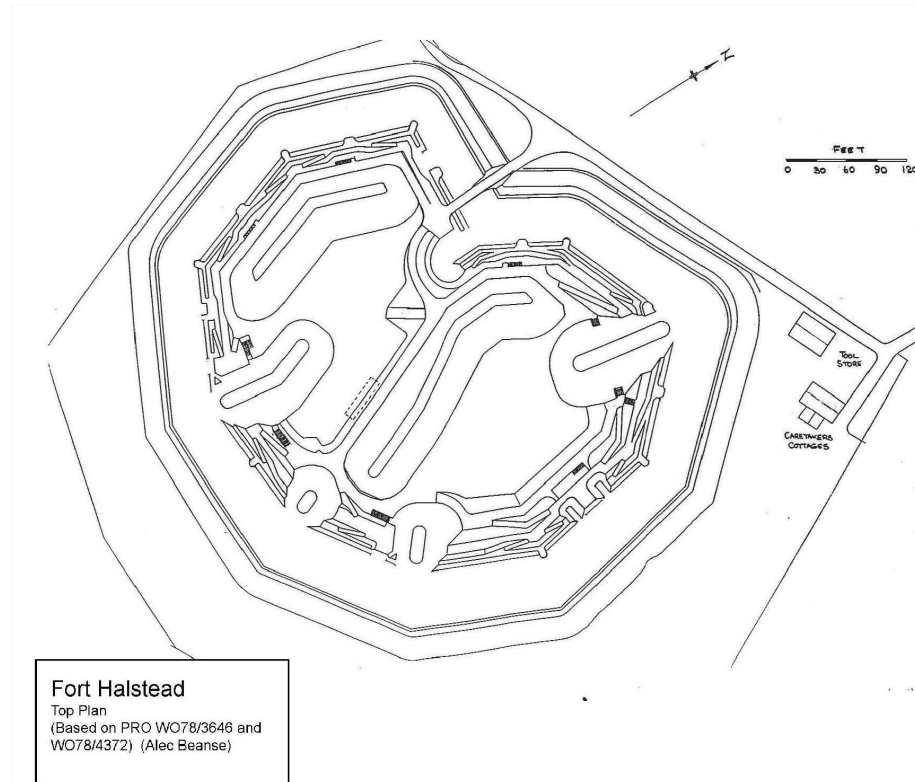
Not to Scale:  
Illustrative Only

Figure 6:  
Second Edition Ordnance  
Survey Map, 1896





**Fort Halstead**  
Plan of Buried Structures  
(Alec Beanse)

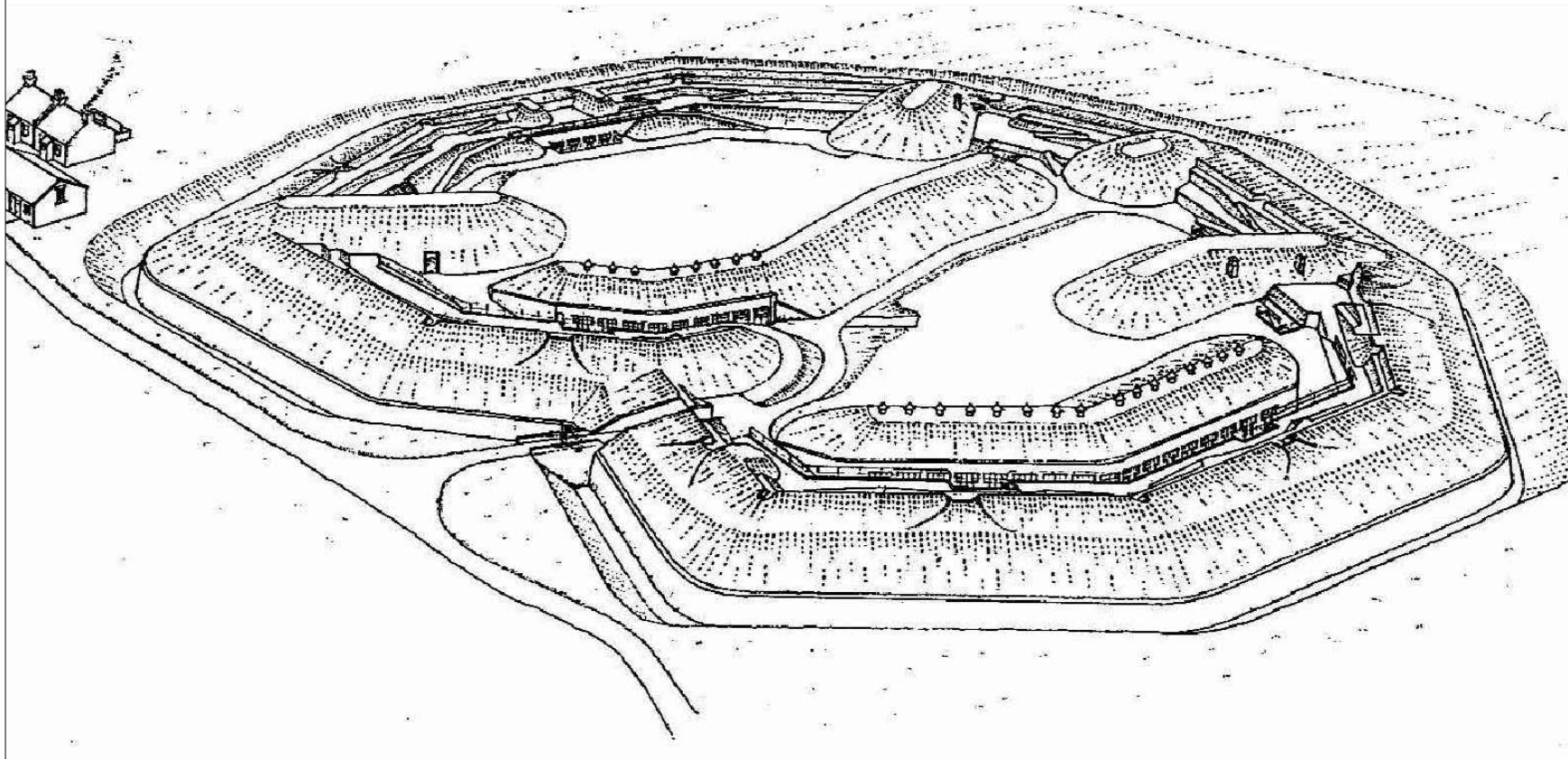


**Fort Halstead**  
Top Plan  
(Based on PRO W078/3646 and  
W078/4372) (Alec Beanse)



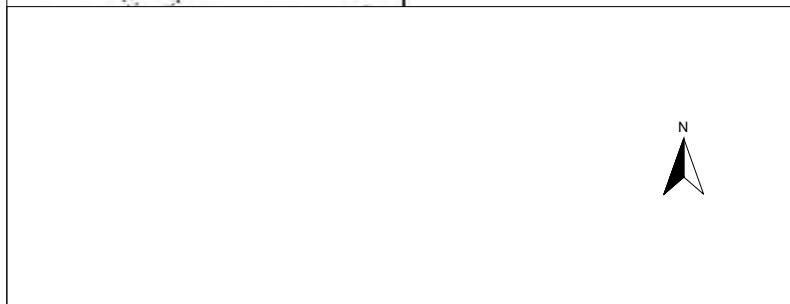
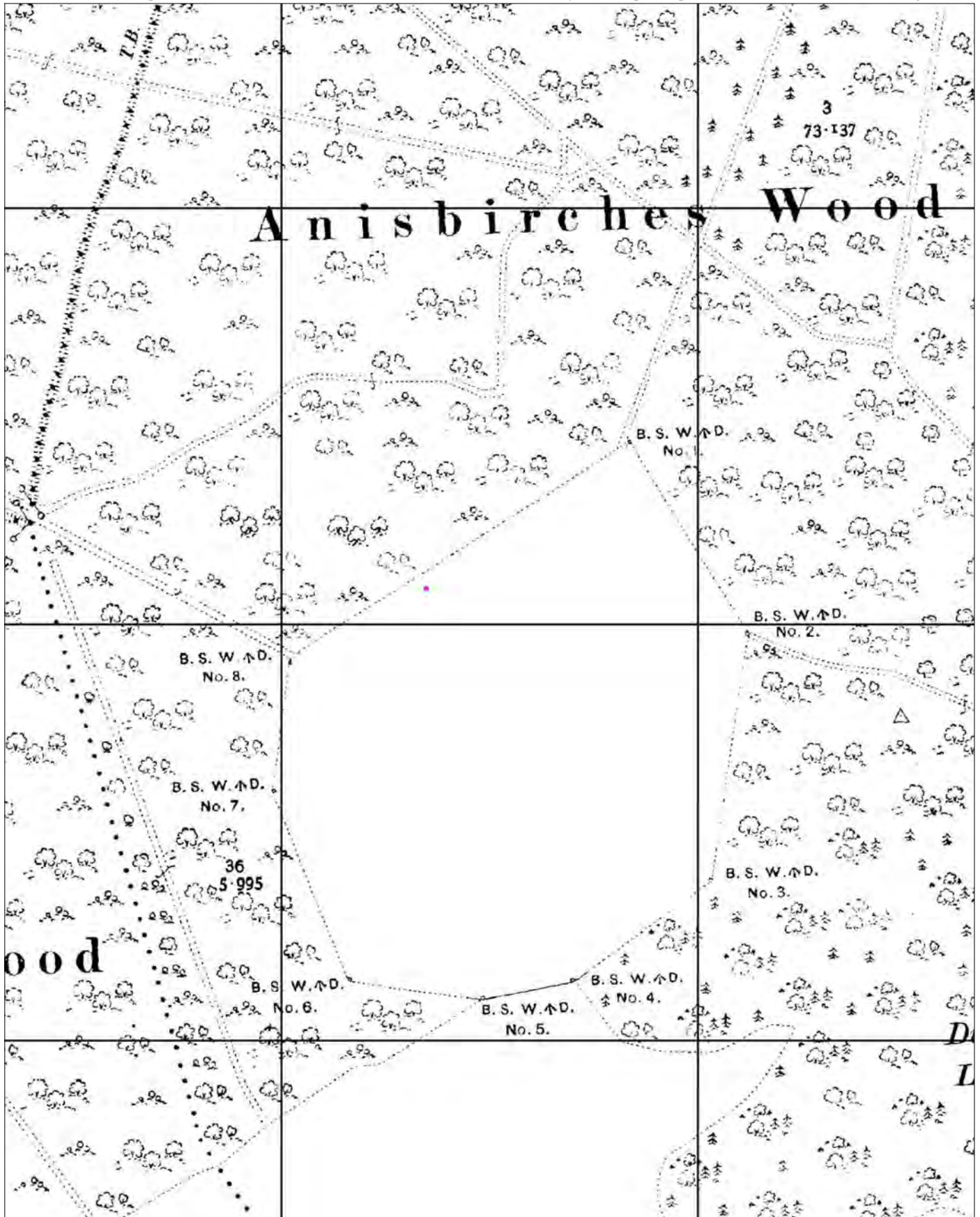
Not to Scale:  
Illustrative Only

**Figure 7:**  
Plans of Fort Halstead  
Mobilisation Centre (Source:  
Roger Gill (illustrator) &  
David Moore (publisher) in  
*The London Mobilisation  
Centres*)



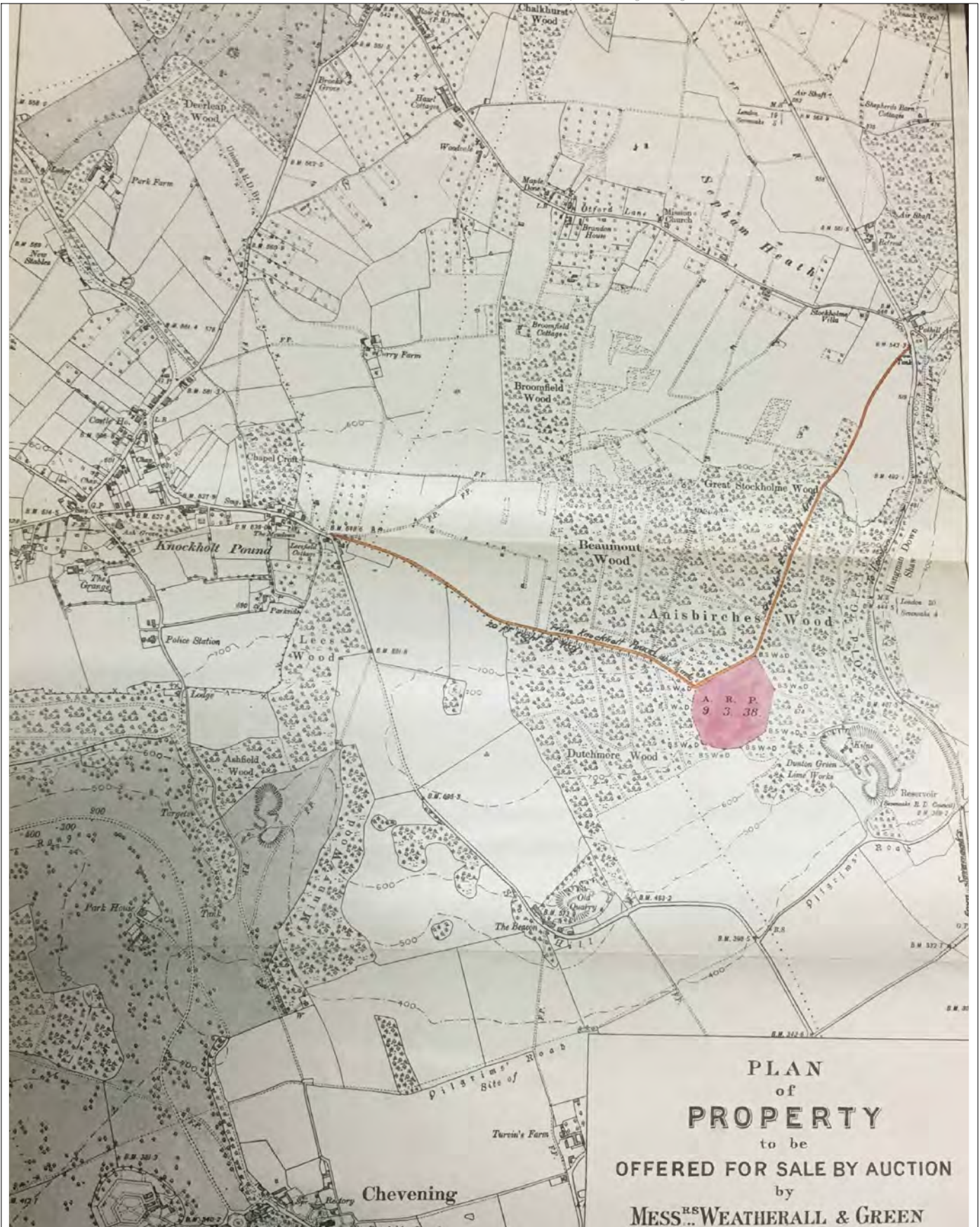
Not to Scale:  
Illustrative Only

Figure 8:  
Illustration showing Fort  
Halstead Mobilisation Centre  
as it may have appeared on  
completion c.1896/7 (Source:  
Roger Gill (illustrator) & David  
Moore (publisher) in *The  
London Mobilisation Centres*)



Not to Scale:  
Illustrative Only

Figure 9:  
1909 Ordnance Survey  
Map

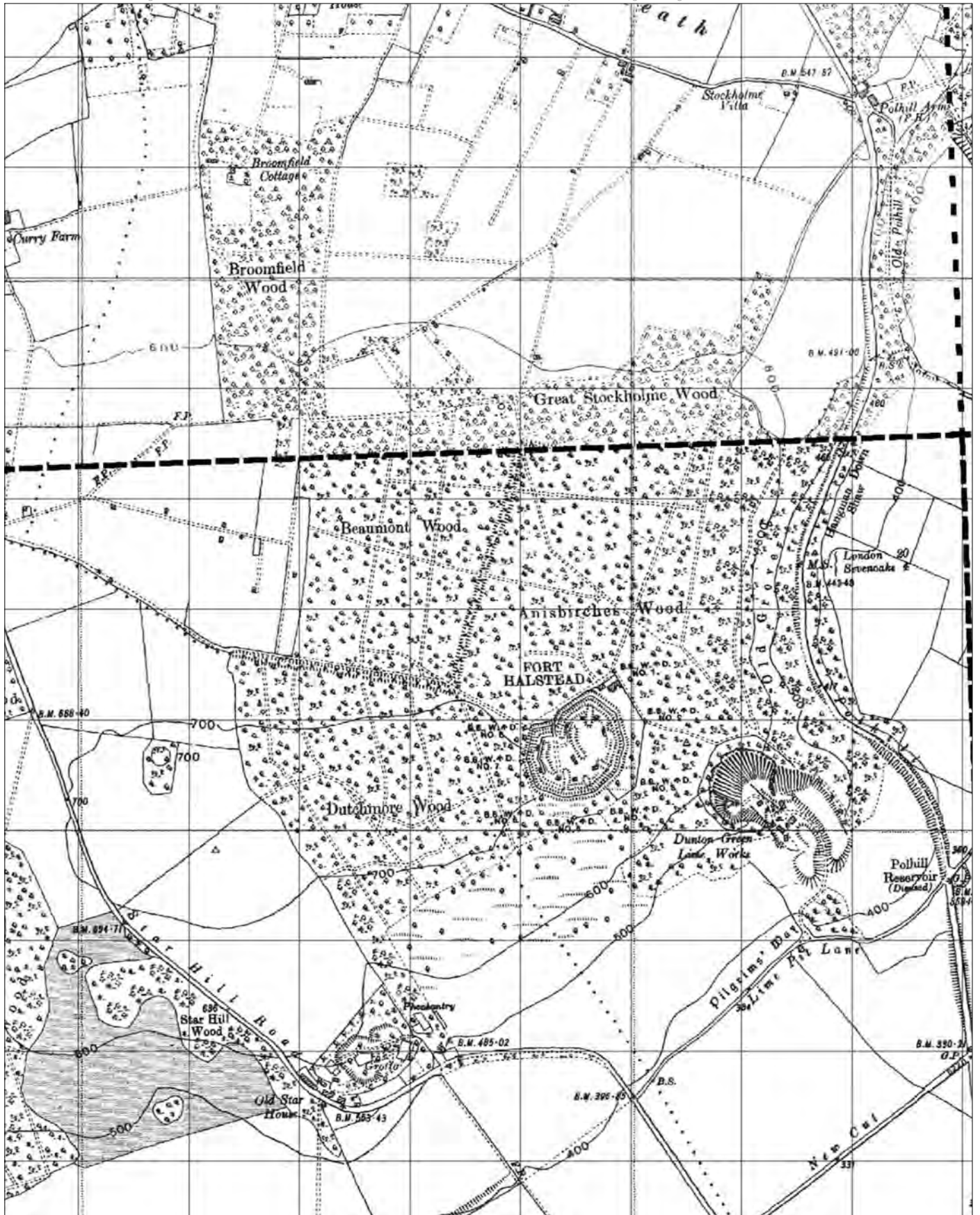


 Site Boundary



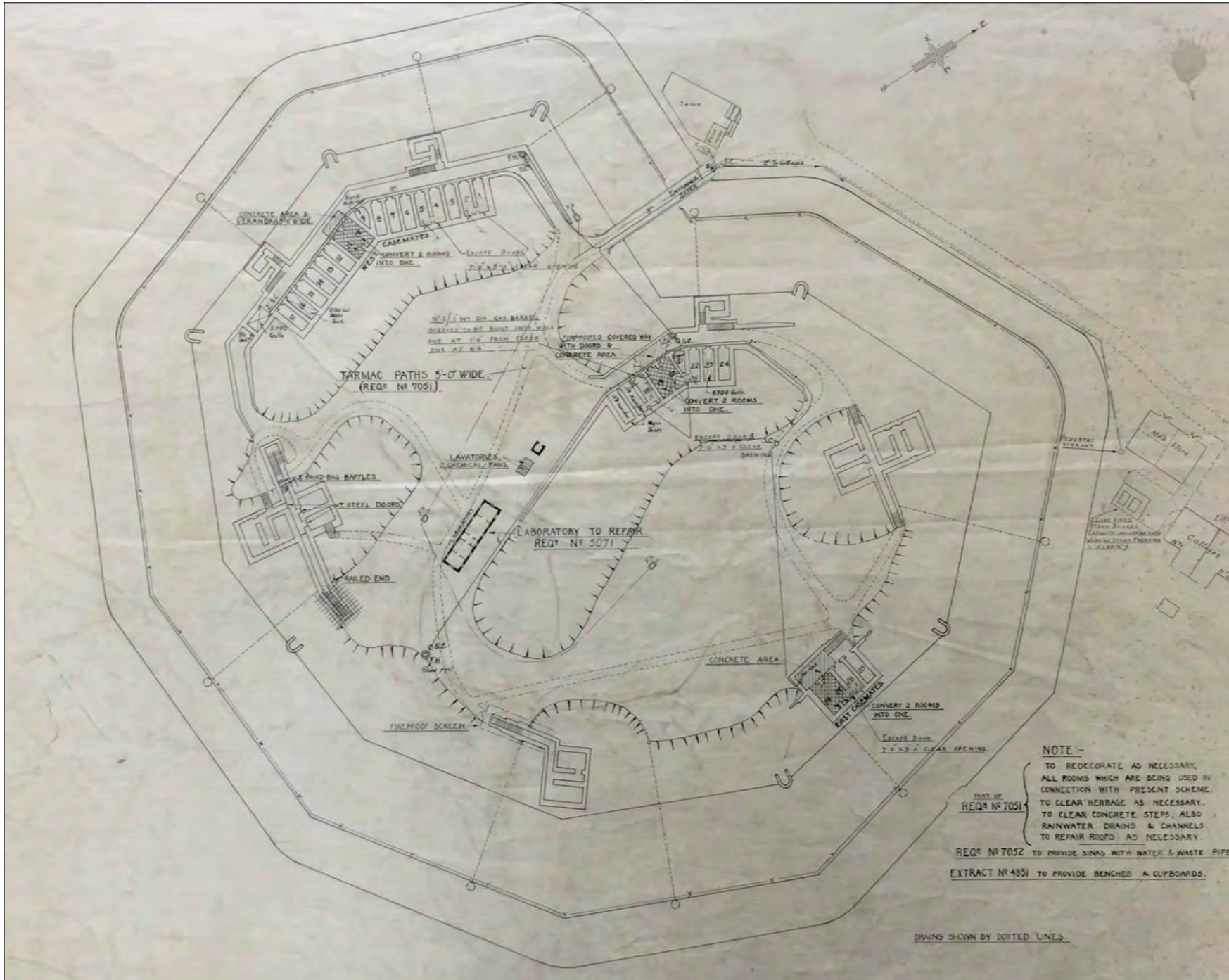
Not to Scale:  
Illustrative Only

Figure 10:  
The Fort, as auctioned in  
1921 (Source: National  
Archives (DEFE 51/17))



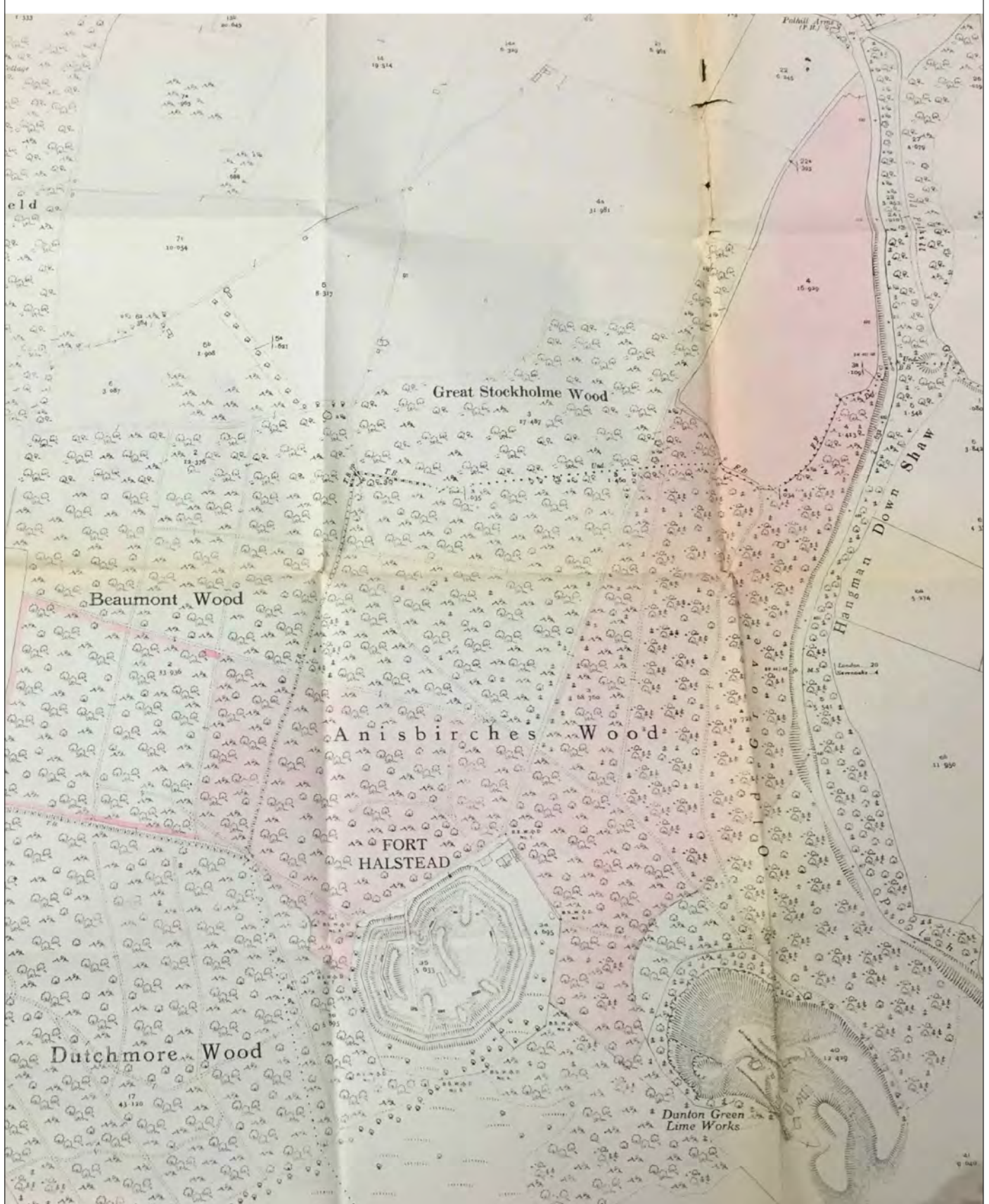
Not to Scale:  
Illustrative Only

Figure 11:  
1936 Ordnance Survey  
Map



Not to Scale:  
Illustrative Only

Figure 12:  
1937 Plan showing proposed  
alterations to the Fort  
(Source: National Archives  
(WORK43/578))

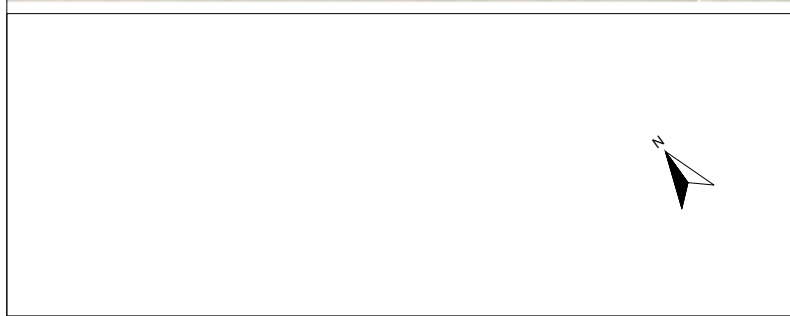
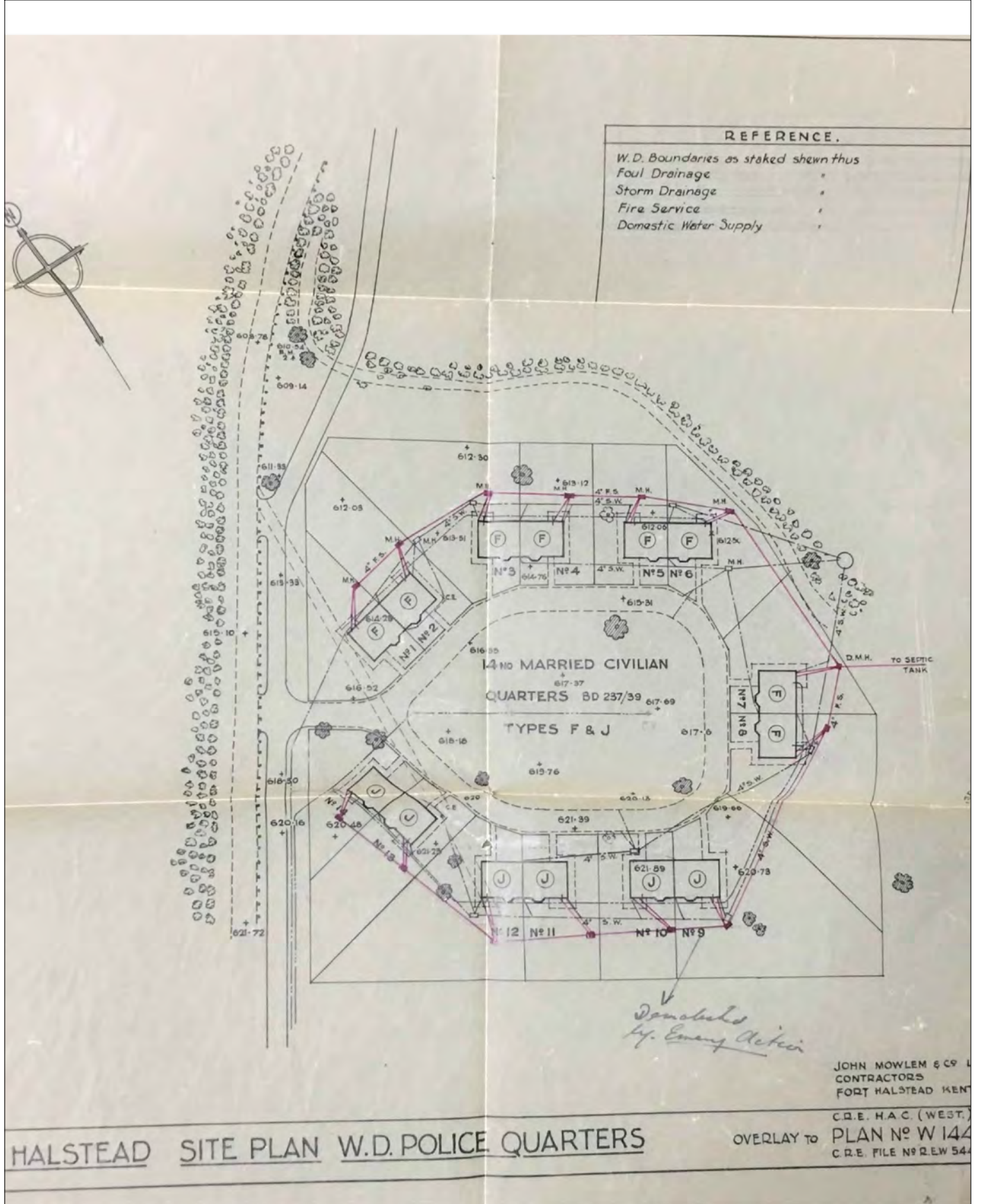


N  
↑



Not to Scale:  
Illustrative Only

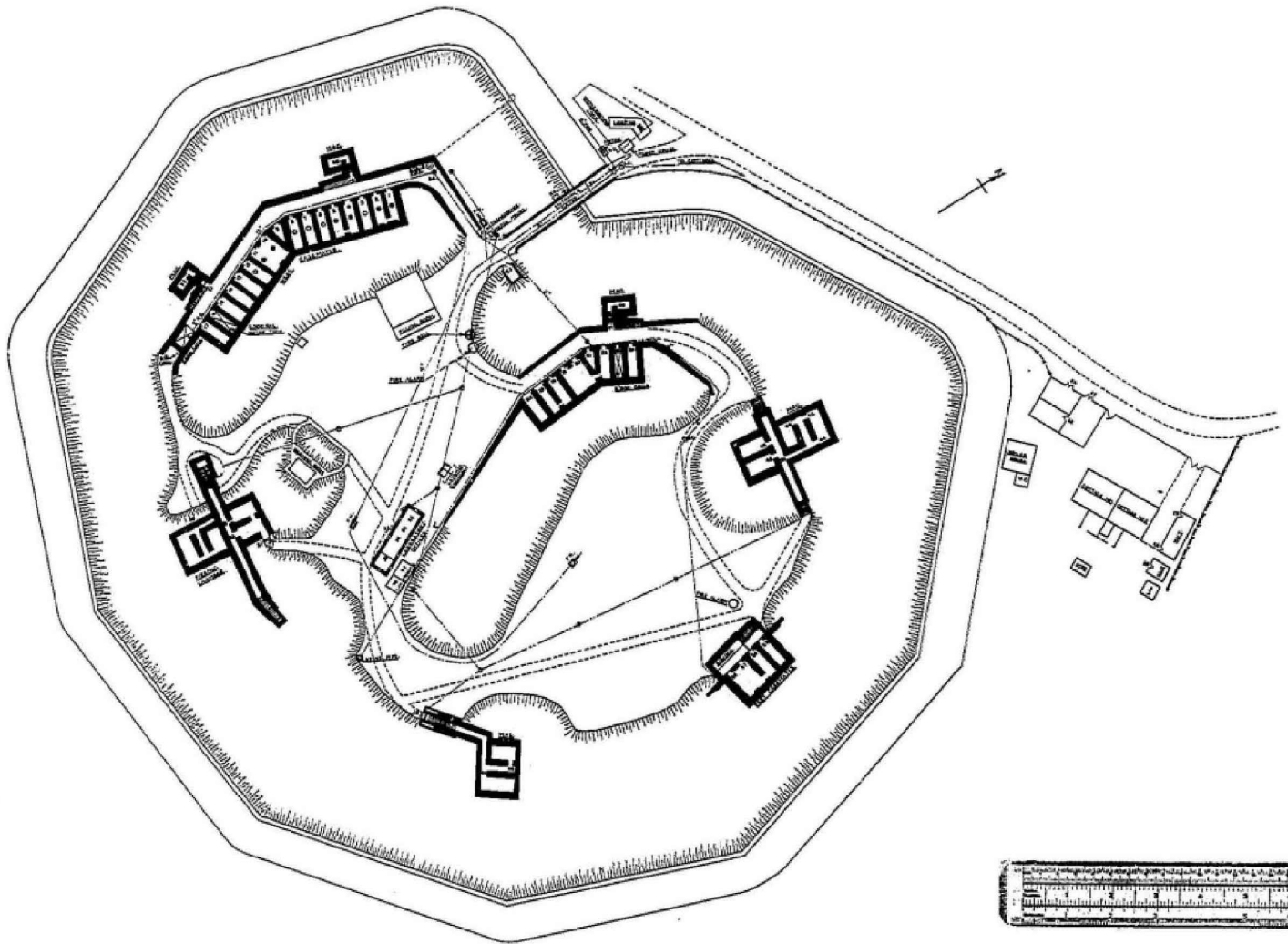
Figure 13:  
Additional Land Purchased  
in 1939  
(Source: National Archives  
(DEFE51/17))



Not to Scale:  
Illustrative Only

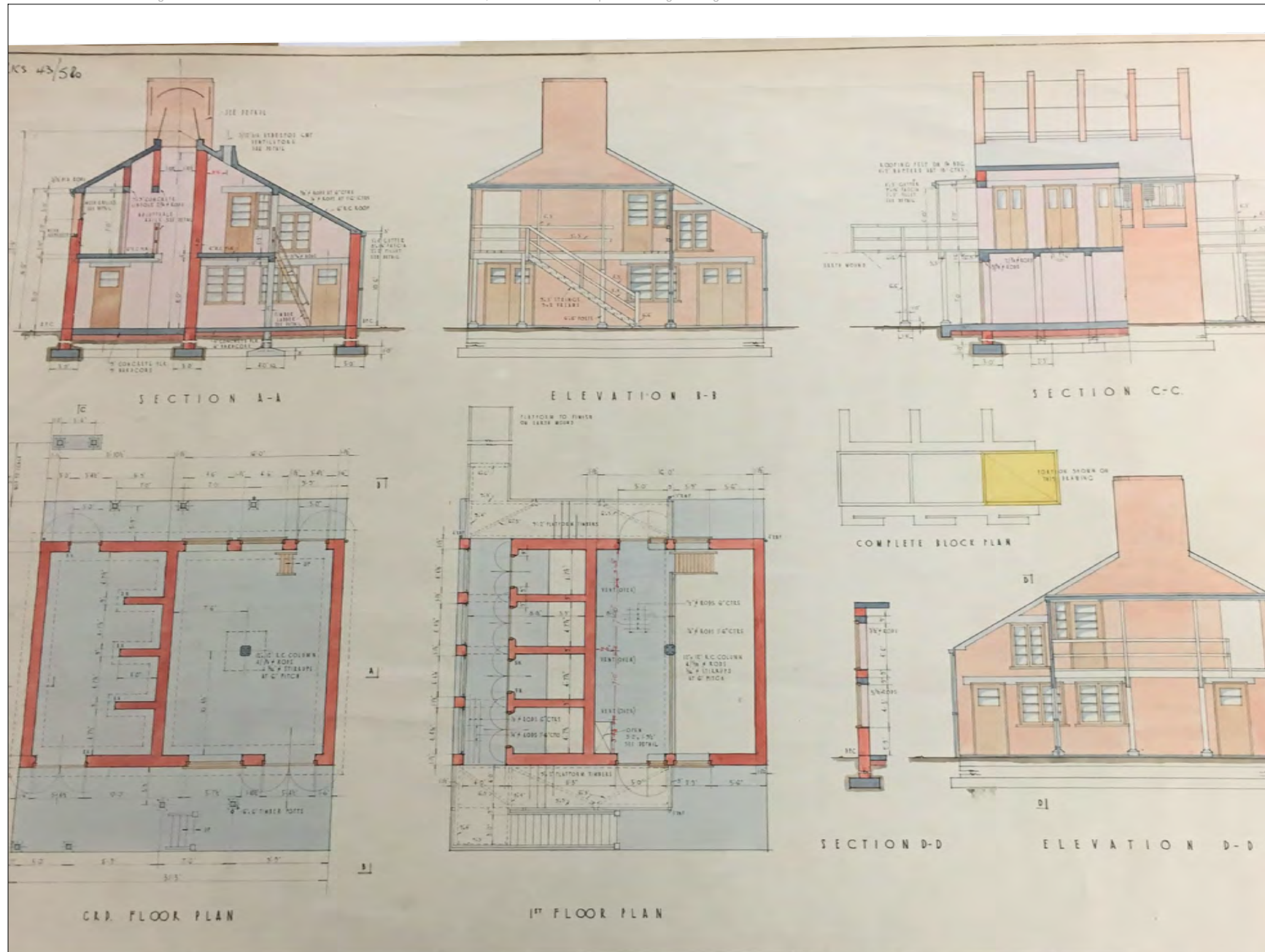
Figure 14:  
Plans c.1940-1941 showing nos. 1-14 Fort Road (Source: National Archives (AVIA 22/2304))





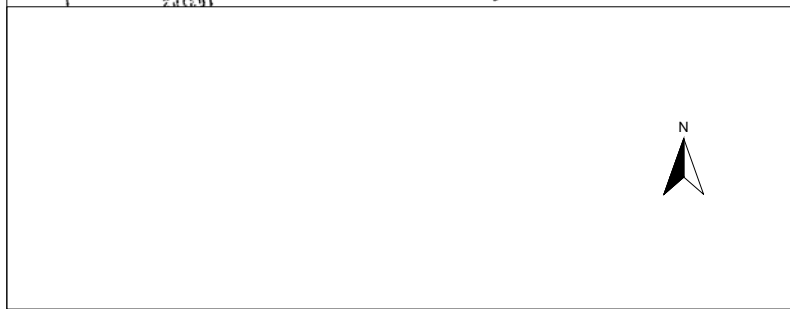
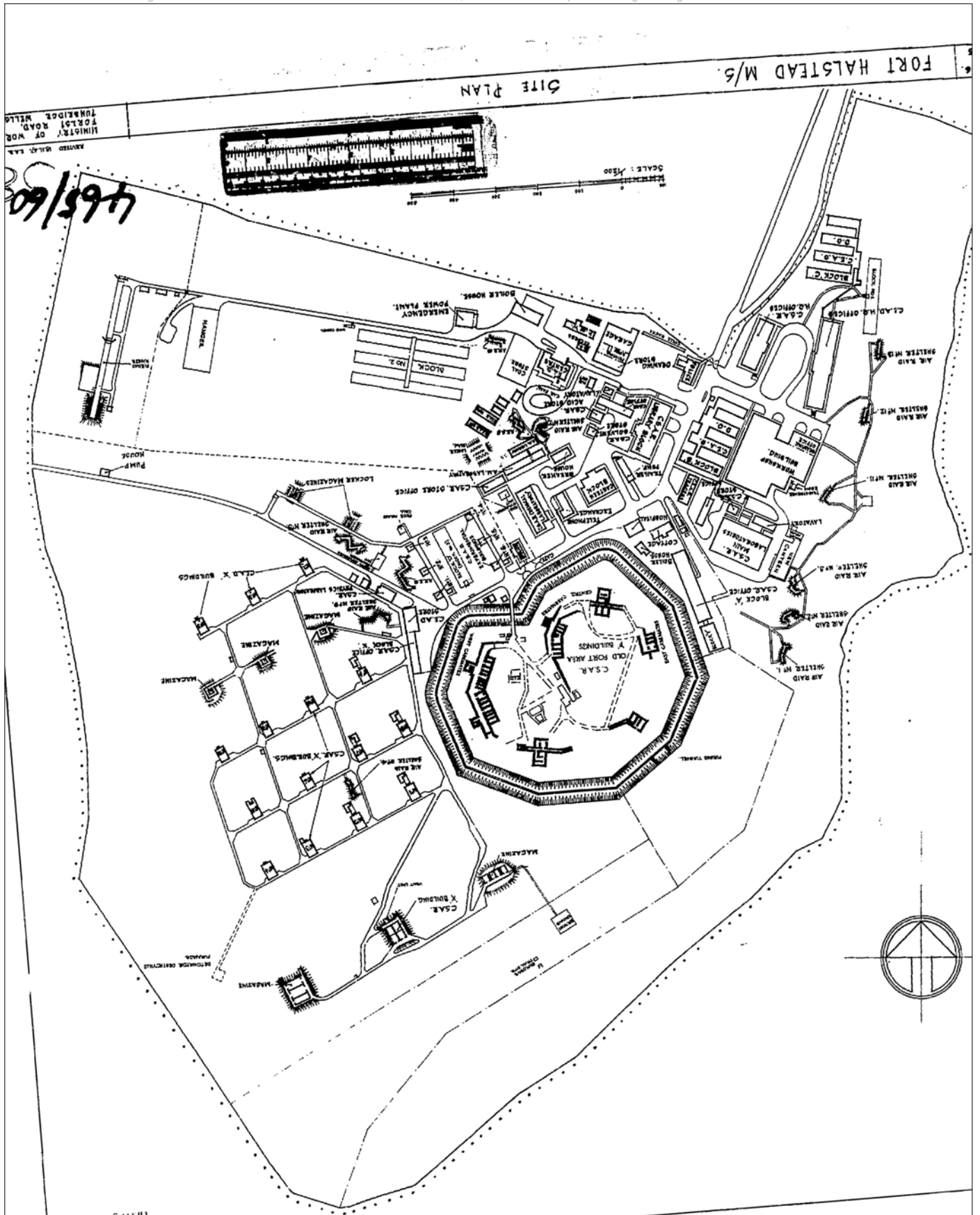
Not to Scale:  
Illustrative Only

Figure 15:  
Wartime plan of the  
immediate area of the Fort



Not to Scale:  
Illustrative Only

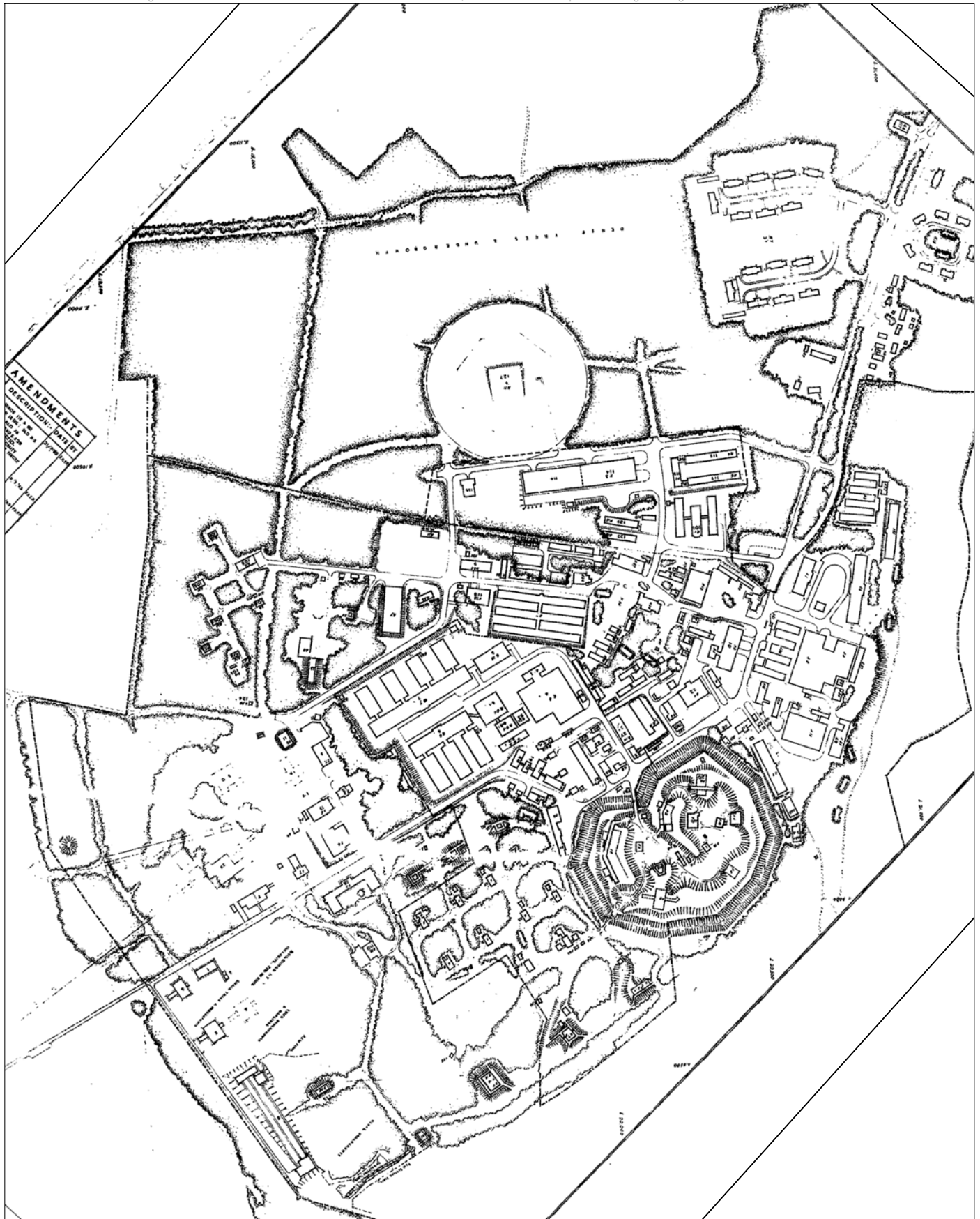
Figure 16:  
Architect's drawings of  
building F11, dated February  
1938 (Source: National  
Archives (WORK43/580))



Not to Scale:  
Illustrative Only

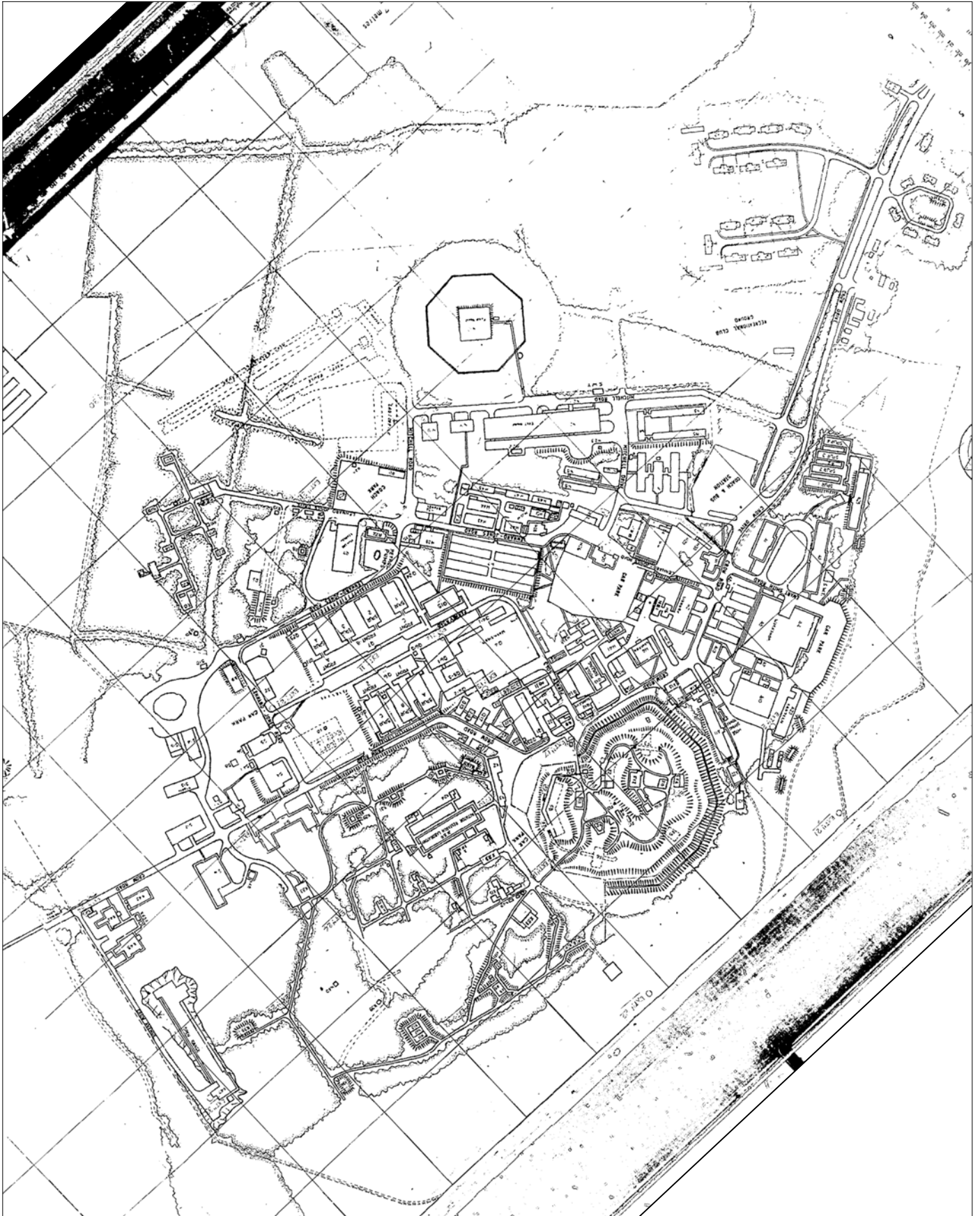
Figure 17:  
Plan of Site in 1947





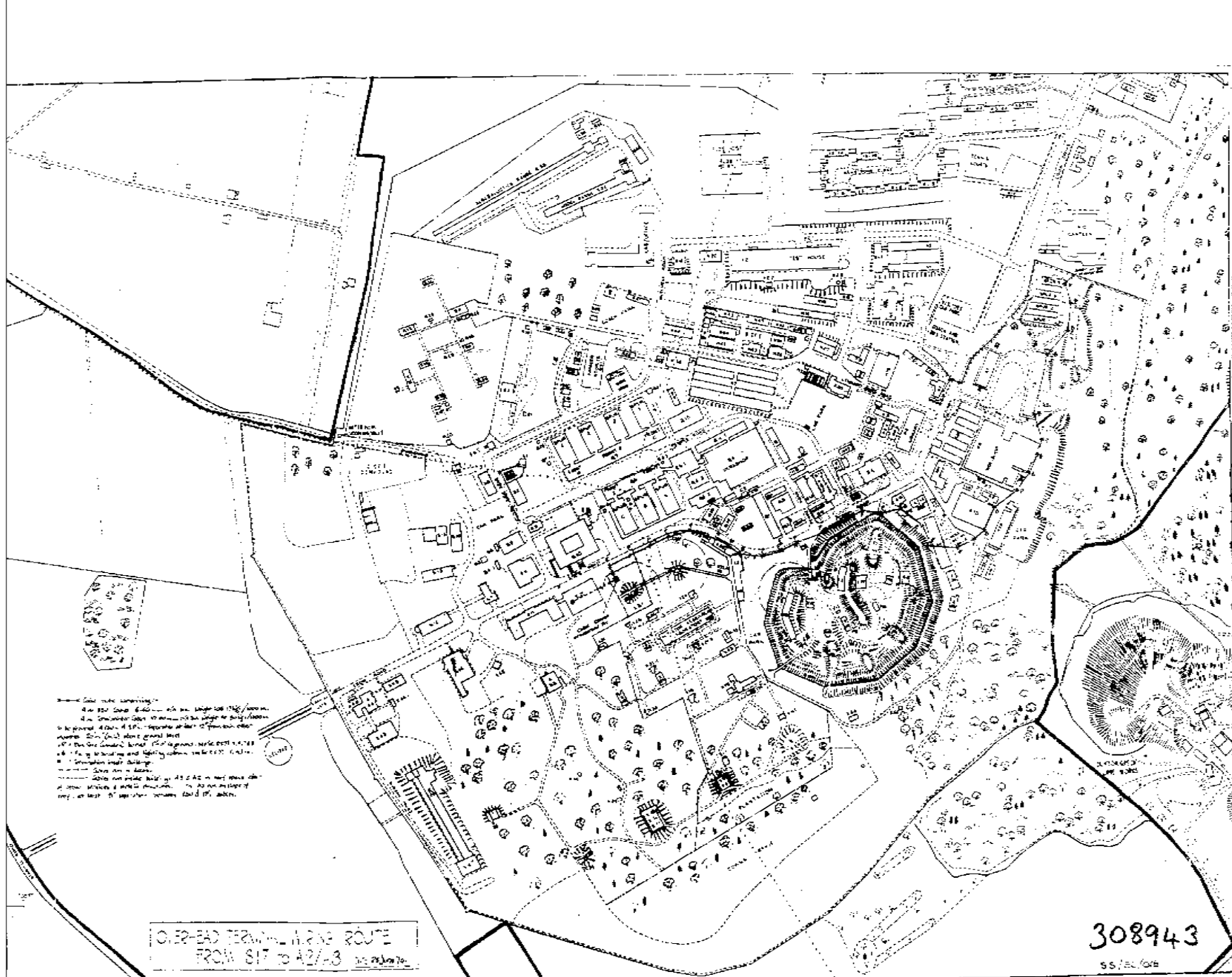
Not to Scale:  
Illustrative Only

Figure 19:  
Plan of Site in 1952



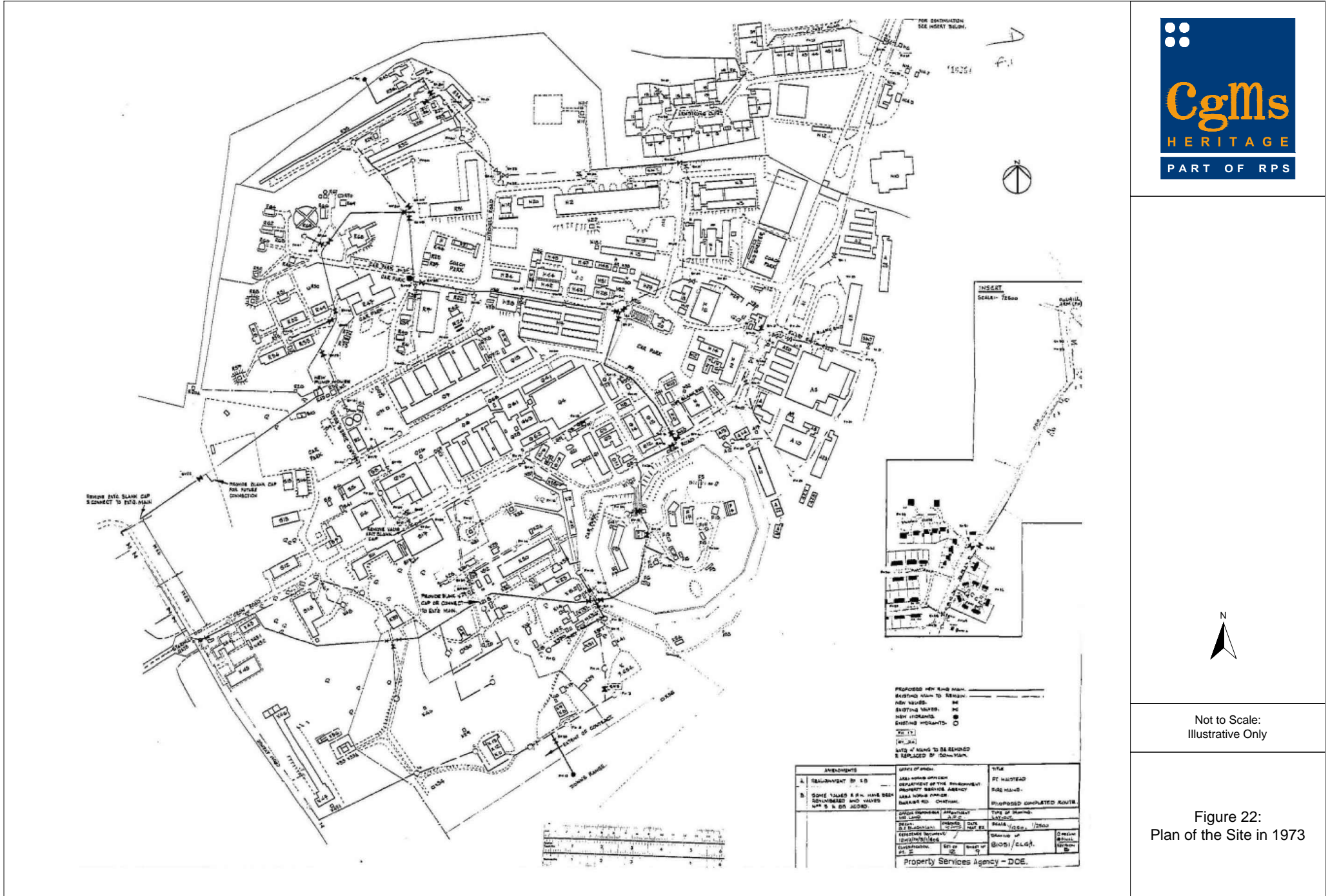
Not to Scale:  
Illustrative Only

Figure 20:  
Plan of Site in 1962



Not to Scale:  
Illustrative Only

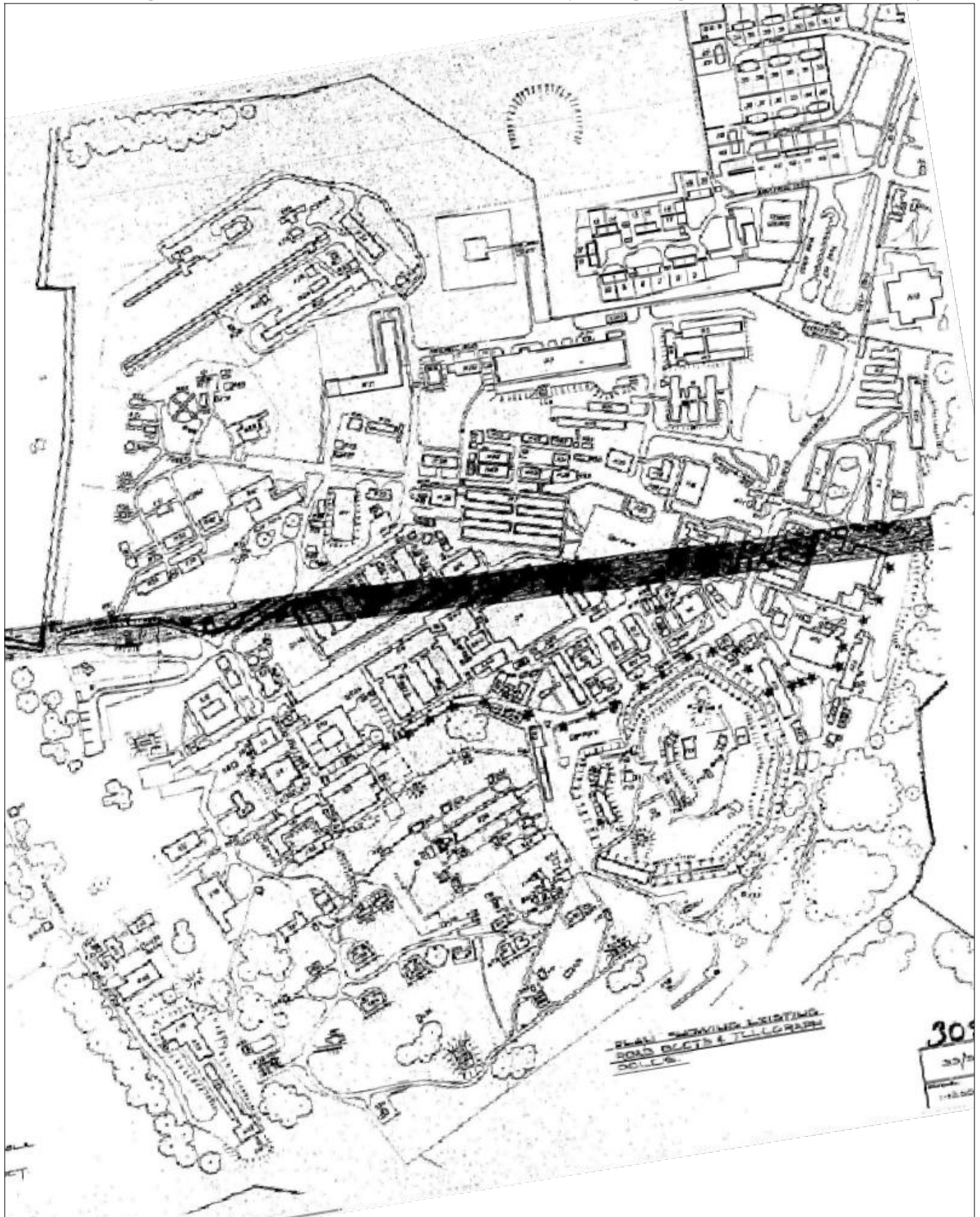
Figure 21:  
Plan of the Site in 1973



Not to Scale:  
Illustrative Only

Figure 22:  
Plan of the Site in 1973



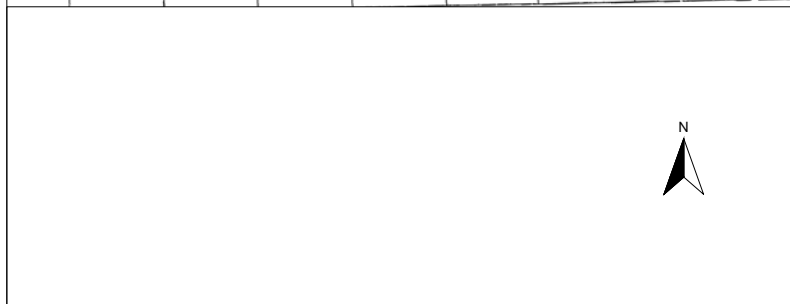
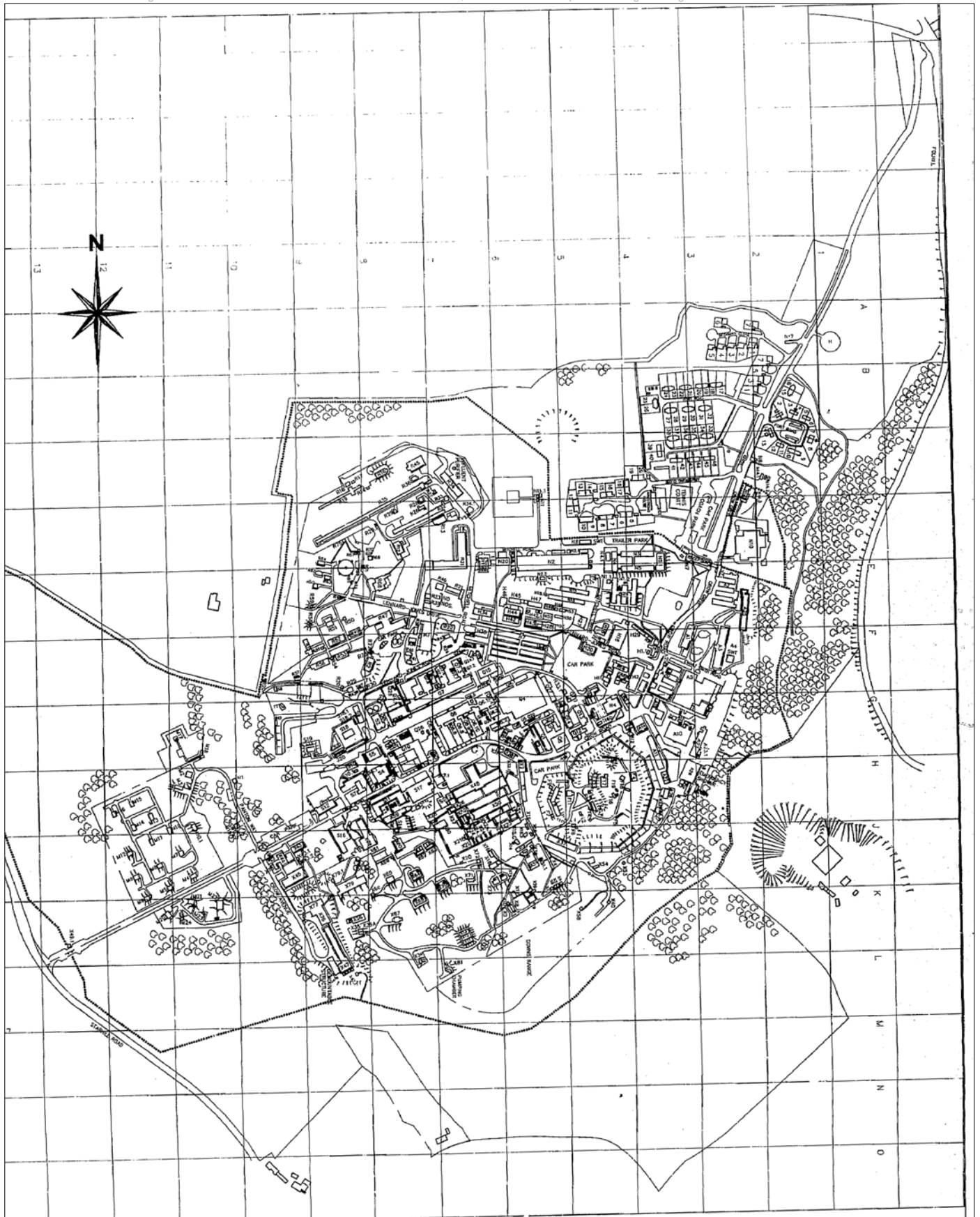


 Site Boundary



Not to Scale:  
Illustrative Only

Figure 23:  
Plan of Site in 1986, showing  
the Site at its maximum  
extent



Not to Scale:  
Illustrative Only

Figure 24:  
Plan of Site in 1993

**PLATES**



Plate 1: View looking southwards from land adjacent to the Fort (next to X54).



Plate 2: View looking southwards from on top of the Fort Rampart



Plate 3: View looking south from the south-west corner of the Fort's rampart



Plate 4: View looking south from the central point on the southern half of the Fort's rampart



Plate 5: View looking south-east from the south east corner of the Fort's rampart



Plate 6: View looking east along Crow Road with the Fort on the left-hand side and the brick Q13 and Q14 visible to the right-hand side.



Plate 7: View looking north from the Fort's causeway towards the Q Area.



Plate 8: View looking towards the Fort's entrance



Plate 9: View looking eastwards along Crow Road with the Fort on the right-hand side and Q1 on the left.

**APPENDIX 1: Heritage Views by JTP architects**



## VIEWS:

1. View along Crow Drive looking west
2. View from the Fort towards Q14
3. Return view from Q14 towards the Fort
4. Aerial views looking west and east

