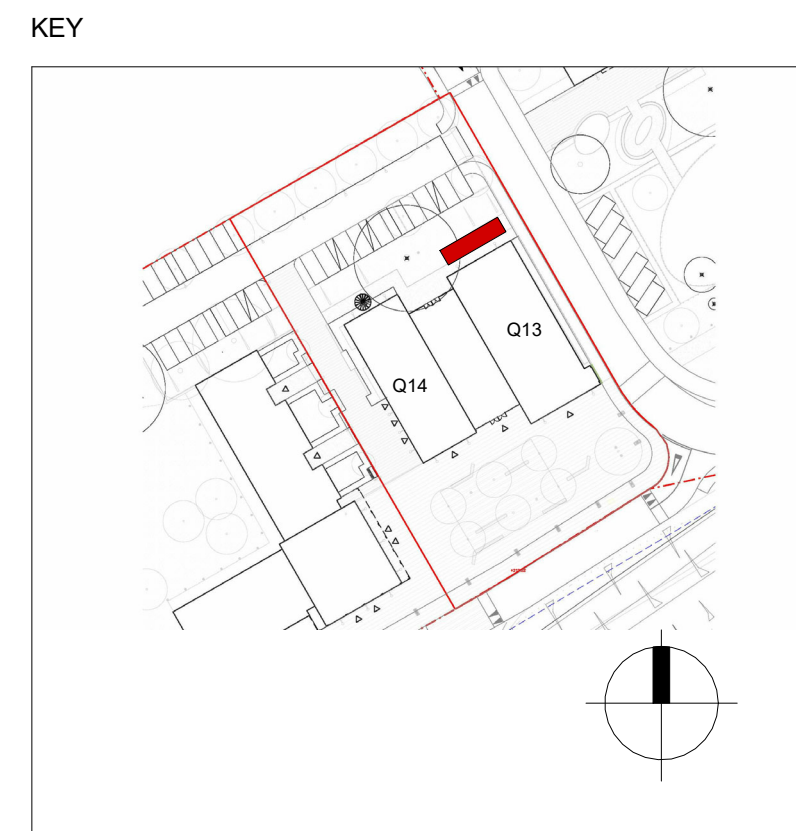
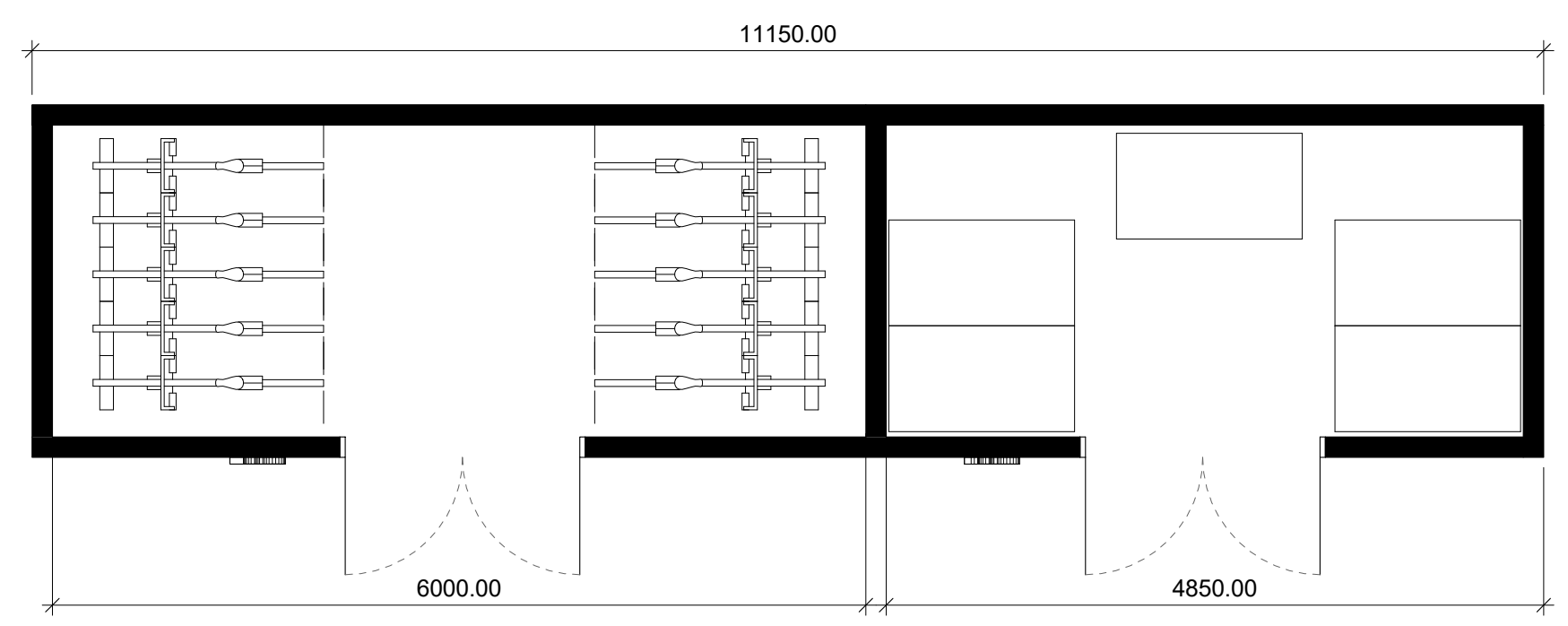


**Notes**  
 Do not scale from this drawing.  
 All contractors must visit the site and be responsible for taking and checking dimensions.  
 All construction information should be taken from figured dimensions only.  
 Any discrepancies between drawings, specifications and site conditions must be brought to the attention of the supervising officer.  
 This drawing & the works depicted are the copyright of JTP.

This drawing is prepared for the specific project stage in the Drawing Status section below and it is not intended to be used for any other purpose. Whilst all reasonable efforts are used to ensure drawings are accurate, JTP accept no liability for any reliance placed on, or use made of, this plan by anyone for purposes other than those stated in the Drawing Status below.



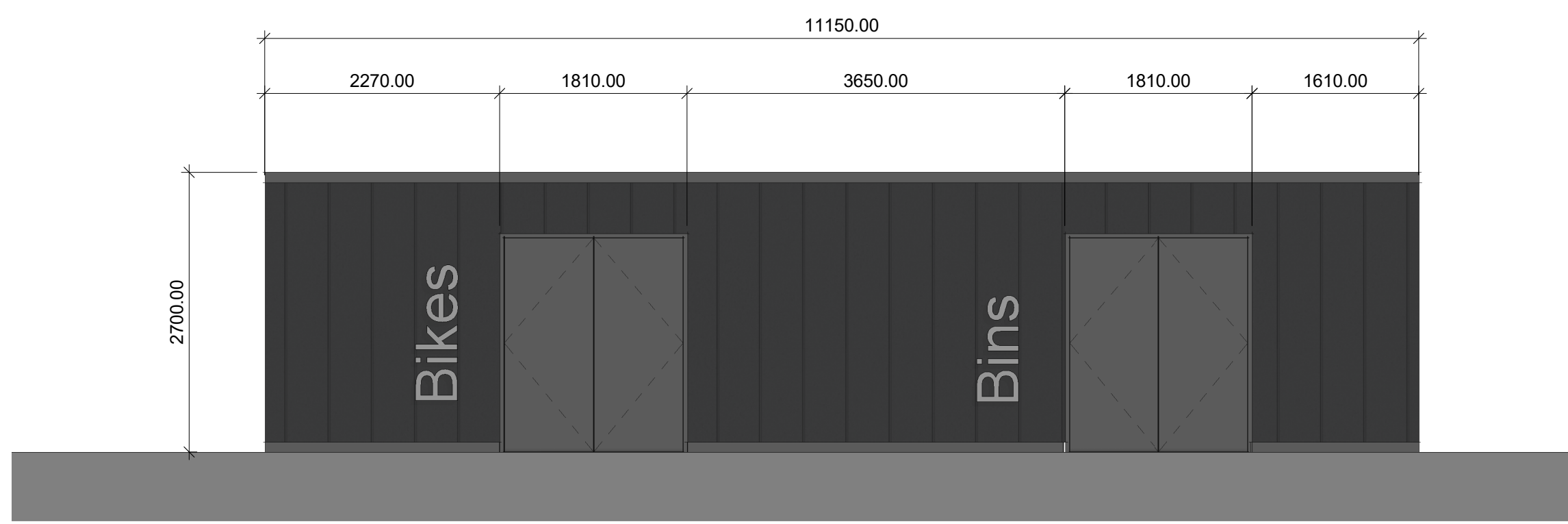
- MATERIAL KEY**
- 01 Brown - Red brick to match existing
  - 02 Black brick (soldier course)
  - 03 Black brick (stretcher course)
  - 04 Black crittall style windows (mandatory T-shape glazing bars)
  - 05 Black crittall style doors (mandatory T-shape glazing bars)
  - 06 Black curtain walling for Atrium
  - 07 Black metal finish
  - 08 Black paint finish: lintels/cills
  - 09 Signage metallic grey (text shown as indicative only)
  - 10 Lighting: Wall mounted grey metallic RAL 9007
  - 11 Glazed Elements
  - 12 Grey metal finish



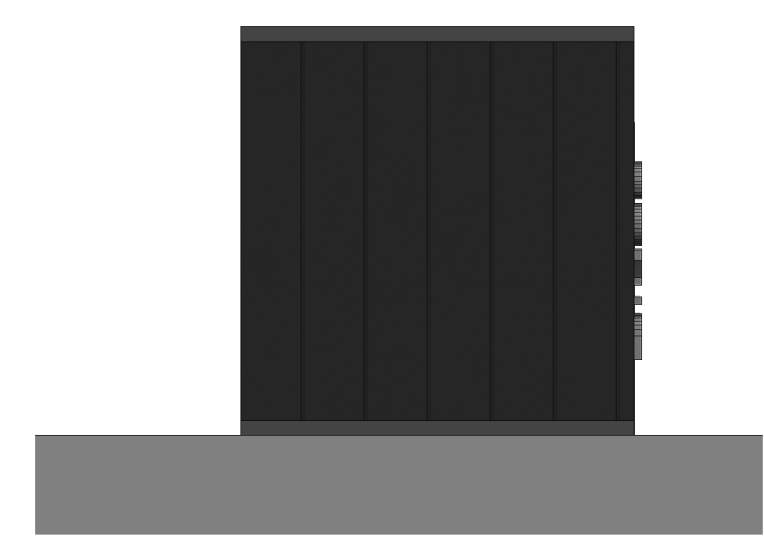
Bin & Cycle Store Plan



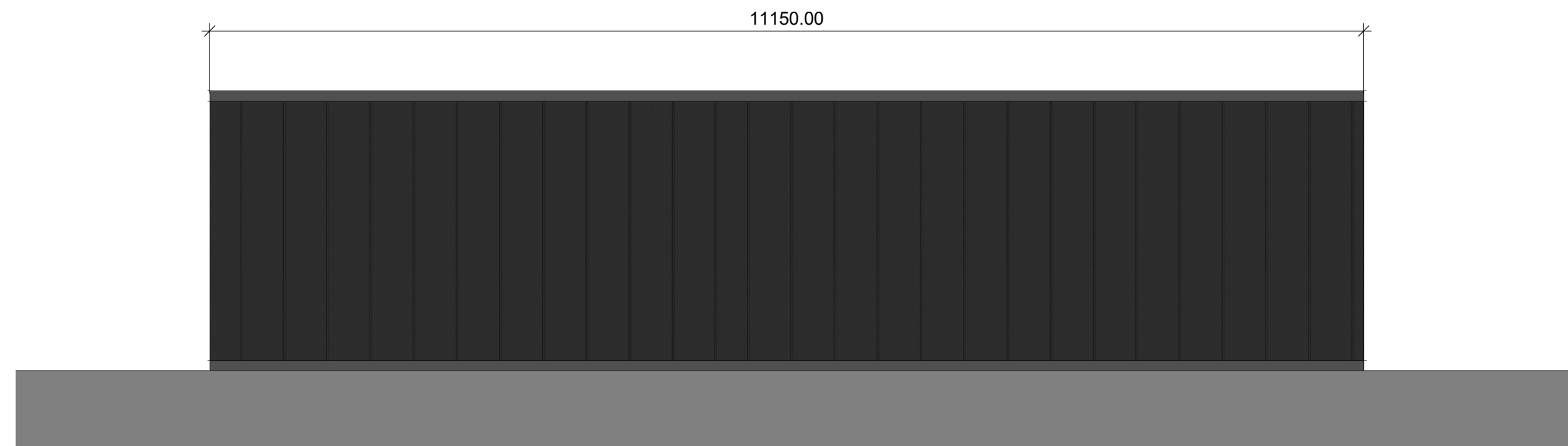
3D View\_Bin & Cycle Store



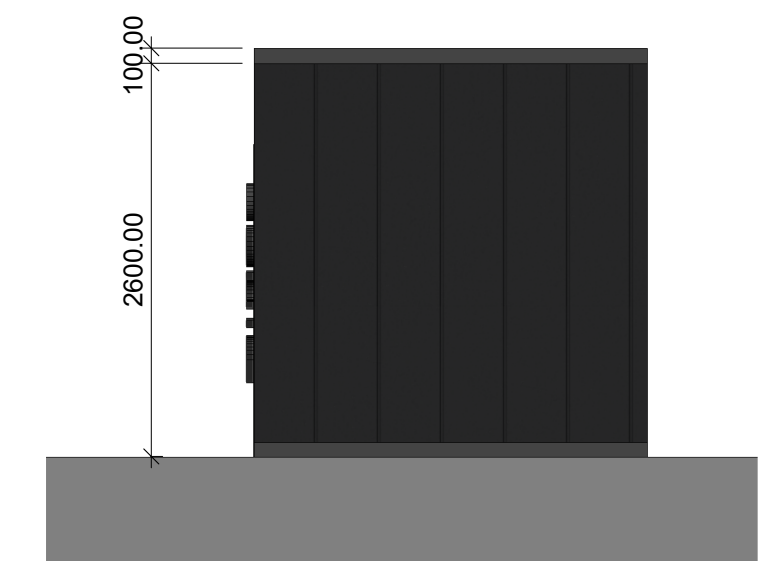
Front Elevation  
1 : 50



Left Elevation  
1 : 50



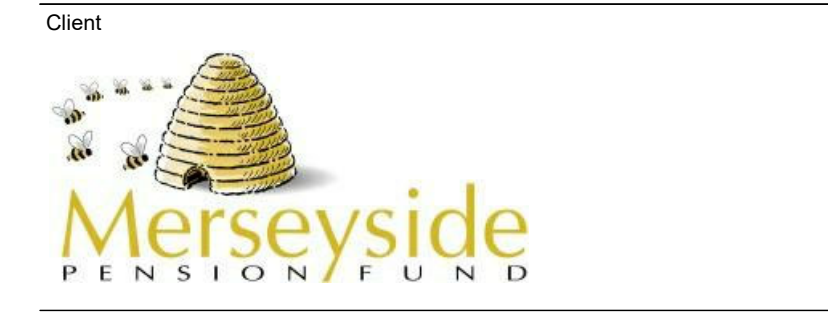
Rear Elevation  
1 : 50



Right Elevation  
1 : 50

Rev	Date	Description	Drawn	Chkd
P2	27.04.20	Door amendments	CBT	CDS
P1	10.10.19	PLANNING	CBT	CDS

Drawing Status  
**PLANNING**



**jtp** JTP Studios  
 Unit 5, The Rum Warehouse  
 Pennington Street  
 London, E1W 2AP  
 +44 (0) 20 7017 1760  
 www.jtp.co.uk

Project  
**Fort Halstead**

Drawing Title  
**Village Centre  
 Q14 - 13 Bin & Cycle Store**

Scale @A1 Job Ref. 00556J  
 Drawing No. 00556J\_Q14-13\_S19 Revision P2

