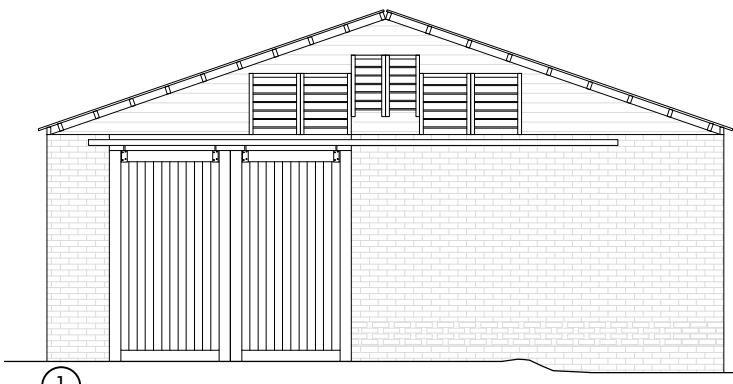
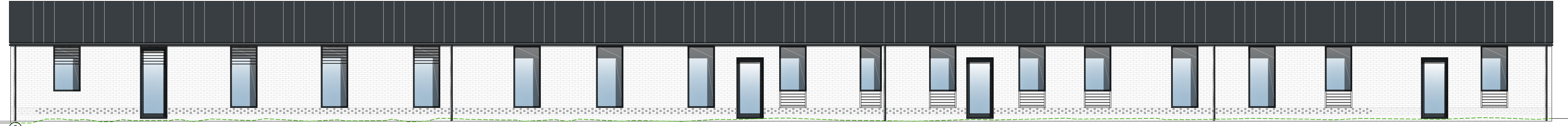


1 new sliding doors in existing opening. existing side door pinned in place. existing side door pinned in place.

design note:
Engineering back to be recessed into existing slaper work/ ventilation holes (shown grey).
Grey aluminium windows recessed into existing openings to create shadow line and depth to elevation.
Middle louvre to be retained.
Replacement timber boarding but fixed vertically.

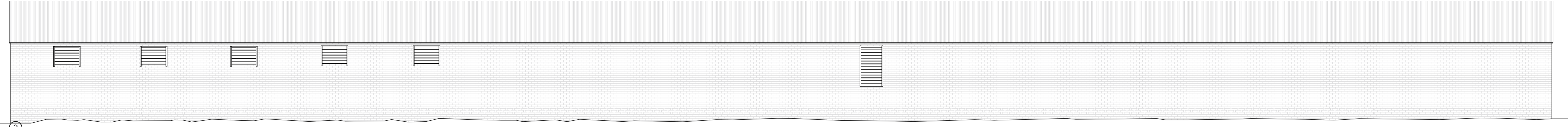


1



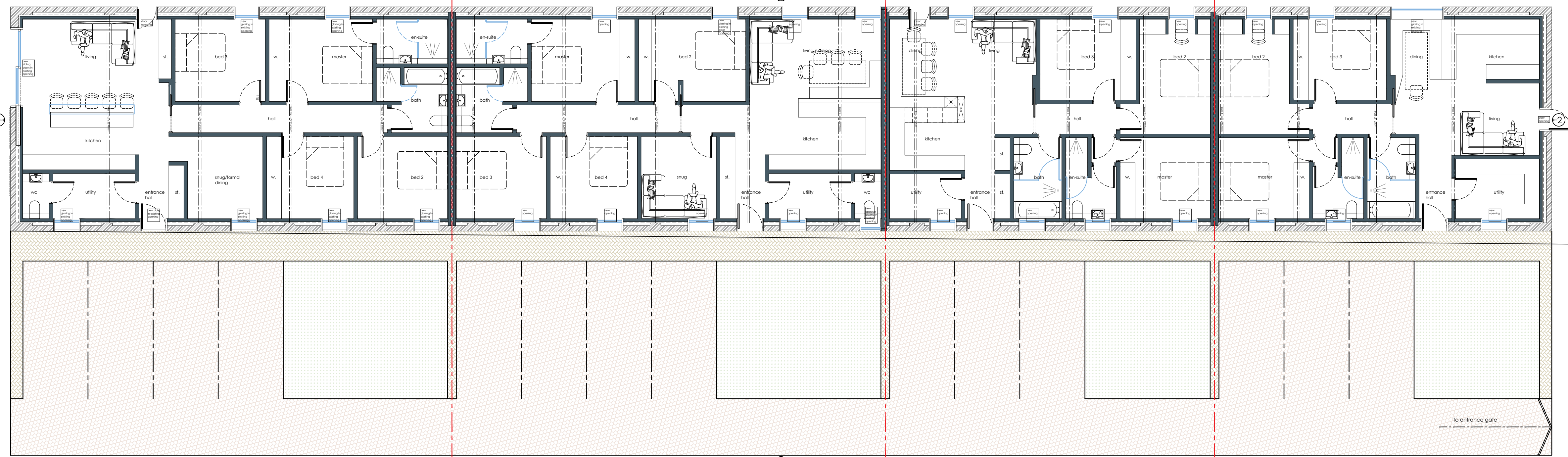
3 existing opening extended and glazed, louvre retained. new door in extended existing opening, louvre retained. existing opening extended and glazed, louvre retained. existing opening extended and glazed, louvre retained. existing opening extended and glazed, louvre retained. new opening. new opening. new opening. new opening. new opening. existing opening extended and glazed, louvre retained. new opening. new opening. new opening. new opening. new opening. new opening. new opening. new opening. new opening. new opening. new opening.

design note:
Engineering back to be recessed into existing slaper work/ ventilation holes (shown grey).
Grey aluminium windows recessed into existing openings to create shadow line and depth to elevation.
Louvre to be retained where possible on existing openings.
New windows and louvre to echo existing, with one per 20th internal bay, introducing strong vertical elements to break up horizontal massing.
Replacement roof to be 6mm steel beam panel roof such as tata steel roof.



3

unit 1: 4 bed (1 en suite), 4 car park spaces unit 2: 4 bed (1 en suite), 4 car park spaces unit 3: 3 bed (1 en suite), 3 car park spaces unit 4: 3 bed (1 en suite), 3 car park spaces



Amendments:

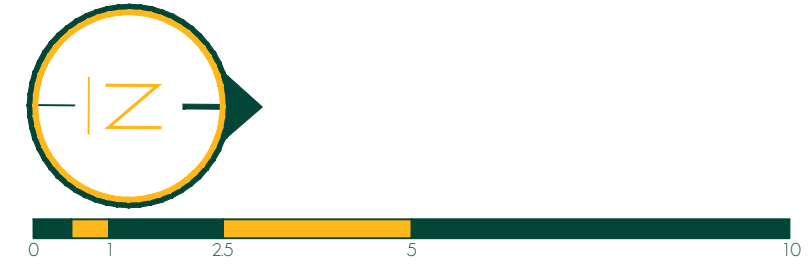
BERRYS
PROPERTY | BUSINESS | PLANNING
01743 271697 | SY2 6FG
www.berrys.uk.com

Client: Mr. K. Miles

Project: Proposed class q conversion of agricultural unit to four units, on land at Poole Meadow Farm, Beamish Lane, Albrington, WV7 3AG.

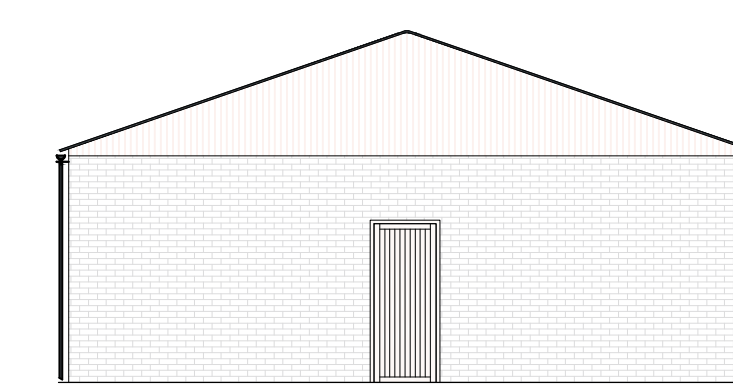
Drawing: Existing and proposed floor plans and elevations.

Drawing Number:	Rev.	Scale	Paper	Drawn By:	RC
SA30270_PL_03		1:100	A1	Date:	June 2018



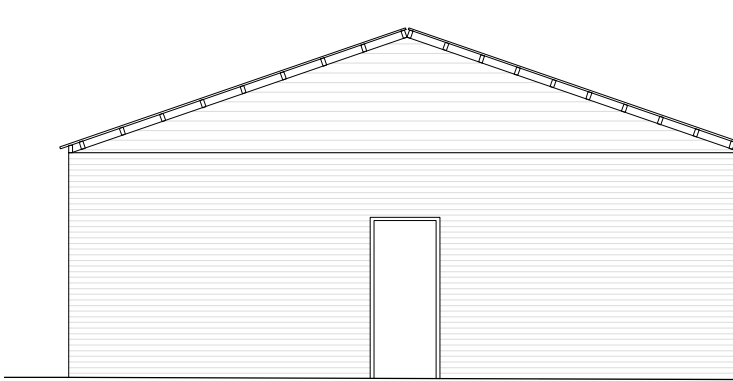
key

- existing brick barn walls
- new timber stud frame
- area of handstanding for walkway
- permeable driveway surfacing
- grass

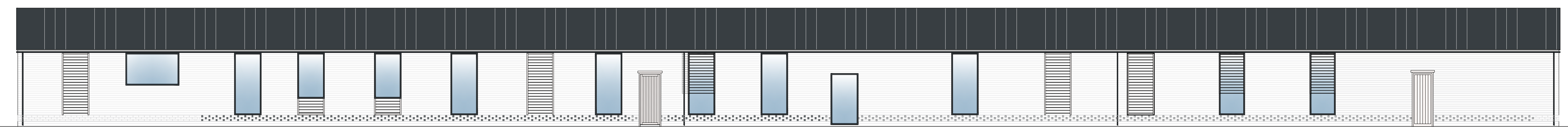


2

design note:
Replacement timber boarding but fixed vertically.
Fascia intentionally left blank and uncladding, showing little change.

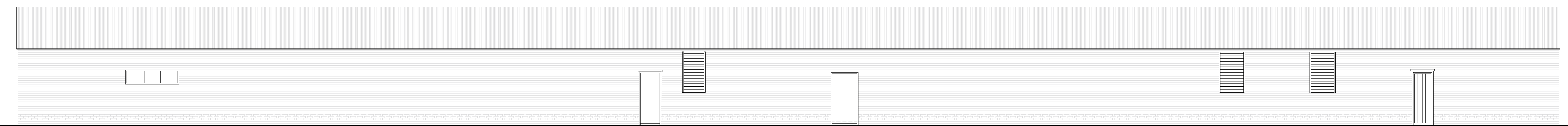


2



4 new louvre in facing brick work. existing glazed opening extended. new opening. new opening. new opening. new opening. new louvre in facing brick work. new opening. existing door opening retained, repairs to door and frame as necessary. existing opening extended and glazed, louvre retained. new opening. new window in existing door opening. new opening. new louvre in facing brick work. new louvre in facing brick work. existing opening extended and glazed, louvre retained. existing opening extended and glazed, louvre retained. existing door opening retained, repairs to door and frame as necessary.

design note:
Engineering back to be recessed into existing slaper work/ ventilation holes (shown grey).
Grey aluminium windows recessed into existing openings to create shadow line and depth to elevation.
Louvre to be retained where possible on existing openings.
New windows and louvre to echo existing, with one per 20th internal bay, introducing strong vertical elements to break up horizontal massing.
Replacement roof to be 6mm steel beam panel roof such as tata steel roof.
New louvre in place of full opening in facing brick work to replicate vertical opening per 20th bay and break up massing.



4