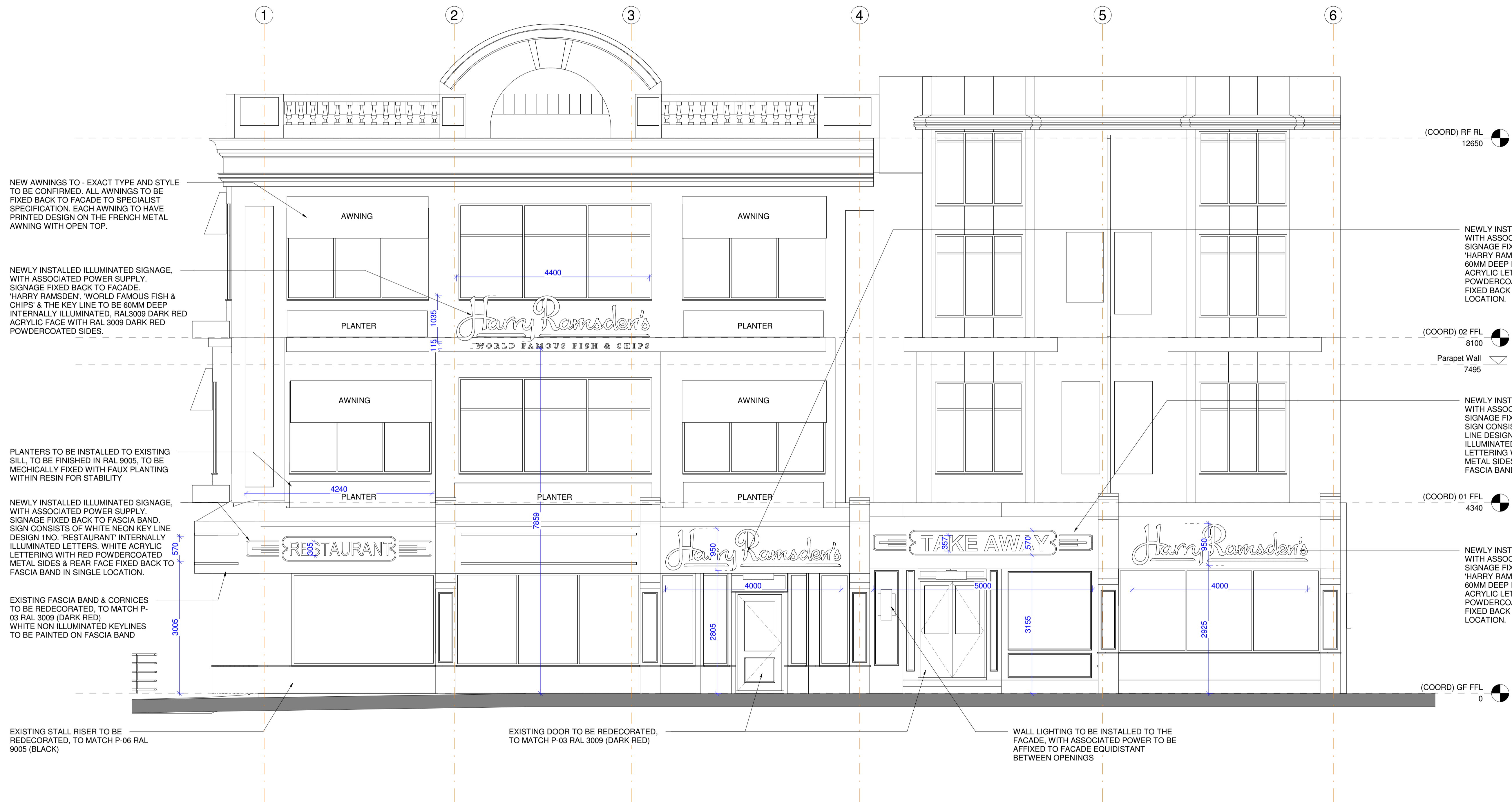


DO NOT SCALE FROM THIS DRAWING.
(DRAWINGS MAY BE SCALED FOR LOCAL AUTHORITY & PLANNING PURPOSES ONLY)
ALL DIMENSIONS TO BE CHECKED ON SITE.
COPYRIGHT PROTECTED.

INFORMATION
ISSUED FOR

PLANNING
ISSUED FOR



NEW AWNINGS TO - EXACT TYPE AND STYLE TO BE CONFIRMED. ALL AWNINGS TO BE FIXED BACK TO FACADE TO SPECIALIST SPECIFICATION. EACH AWNING TO HAVE PRINTED DESIGN ON THE FRENCH METAL AWNING WITH OPEN TOP.

NEWLY INSTALLED ILLUMINATED SIGNAGE, WITH ASSOCIATED POWER SUPPLY. SIGNAGE FIXED BACK TO FACADE. 'HARRY RAMSDEN', 'WORLD FAMOUS FISH & CHIPS' & THE KEY LINE TO BE 60MM DEEP INTERNALLY ILLUMINATED, RAL3009 DARK RED ACRYLIC FACE WITH RAL 3009 DARK RED POWDERCOATED SIDES.

PLANTERS TO BE INSTALLED TO EXISTING SILL, TO BE FINISHED IN RAL 9005, TO BE MECHANICALLY FIXED WITH FAUX PLANTING WITHIN RESIN FOR STABILITY

NEWLY INSTALLED ILLUMINATED SIGNAGE, WITH ASSOCIATED POWER SUPPLY. SIGNAGE FIXED BACK TO FASCIA BAND. SIGN CONSISTS OF WHITE NEON KEY LINE DESIGN 1NO. 'RESTAURANT' INTERNALLY ILLUMINATED LETTERS, WHITE ACRYLIC LETTERING WITH RED POWDERCOATED METAL SIDES & REAR FACE FIXED BACK TO FASCIA BAND IN SINGLE LOCATION.

EXISTING FASCIA BAND & CORNICES TO BE REDECORATED, TO MATCH P-03 RAL 3009 (DARK RED) WHITE NON ILLUMINATED KEYLINES TO BE PAINTED ON FASCIA BAND

EXISTING STALL RISER TO BE REDECORATED, TO MATCH P-06 RAL 9005 (BLACK)

EXISTING DOOR TO BE REDECORATED, TO MATCH P-03 RAL 3009 (DARK RED)

WALL LIGHTING TO BE INSTALLED TO THE FACADE, WITH ASSOCIATED POWER TO BE AFFIXED TO FACADE EQUIDISTANT BETWEEN OPENINGS

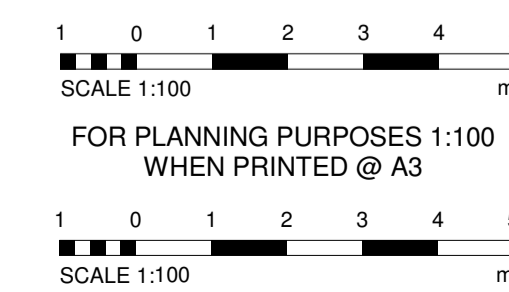
NEWLY INSTALLED ILLUMINATED SIGNAGE, WITH ASSOCIATED POWER SUPPLY. SIGNAGE FIXED BACK TO FACADE. 'HARRY RAMSDEN' & THE KEY LINE TO BE 60MM DEEP INTERNALLY ILLUMINATED, WHITE ACRYLIC LETTERING WITH RED POWDERCOATED METAL SIDES & REAR FACE FIXED BACK TO FASCIA BAND IN SINGLE LOCATION.

NEWLY INSTALLED ILLUMINATED SIGNAGE, WITH ASSOCIATED POWER SUPPLY. SIGNAGE FIXED BACK TO FASCIA BAND. SIGN CONSISTS OF 60MM WHITE NEON KEY LINE DESIGN 1NO. 'TAKEAWAY' INTERNALLY ILLUMINATED LETTERS, WHITE ACRYLIC LETTERING WITH RED POWDERCOATED METAL SIDES & REAR FACE FIXED BACK TO FASCIA BAND IN SINGLE LOCATION.

NEWLY INSTALLED ILLUMINATED SIGNAGE, WITH ASSOCIATED POWER SUPPLY. SIGNAGE FIXED BACK TO FACADE. 'HARRY RAMSDEN' & THE KEY LINE TO BE 60MM DEEP INTERNALLY ILLUMINATED, WHITE ACRYLIC LETTERING WITH RED POWDERCOATED METAL SIDES & REAR FACE FIXED BACK TO FASCIA BAND IN SINGLE LOCATION.

1 (16) NORTH EXTERNAL ELEVATION (S) - Proposed Elevation
ZZ 01000 1 : 50 @

NOTE
WINDOW FRAMEWORK TO BE DECORATED IN DARK RED P-03 TO MATCH RAL 3009
ENTIRE FACADE TO BE MADE GOOD WHERE APPROPRIATE AND PAINTED P-05 PURE BRILLIANT WHITE WEATHERSHIELD EXTERIOR SATIN PAINT.
ALL ILLUMINATED SIGNAGE TO FALL WITHIN THE GUIDELINE LEVELS FOR ENGLAND AS STATED IN THE PROFESSIONAL LIGHTING GUIDE 05; (THE BRIGHTNESS OF ILLUMINATED ADVERTISEMENTS (2015) - INSTITUTE OF LIGHTING PROFESSIONALS), OF 600 CANDELAS PER M2 WITH LUMENS PER MODULE IS 117.6 LINEAR M/ 500 CANDELAS M2.



1.00	28.03.21	ISSUED FOR PLANNING	AT/-
Rev	Date	Revision Description	Drawn/Chk

PROJECT
HARRY RAMSDEN
1-4 MARINE PARADE
BRIGHTON BN2 1TA

DRAWING
SIGNAGE - PROPOSED NORTH EXTERNAL ELEVATION

IDL: ARCHITECTURE

LONDON 17 Black Friars Lane St Paul's, London EC4V 6EP +44 (0)20 7248 1234
EDINBURGH 55, Oyle Crescent City of Edinburgh EH12 9EG +44 (0)13 1334 5705
PRAGUE The Forum Prague 1 Vinohrady Sq 19 Prague +42 (0)72 0279 588

idl.eu.com
Registered in England No.7111665
RIBA Accreditation No.20014346

PROJECT No	SCALE	DATE	DRAWN	CHECKED
2213	1 : 50 @A1	10/13/20	AT	-

FILE NAME (STATUS-REV)
2213-IDL-NA-ZZ-DR-A-16000[2-00]