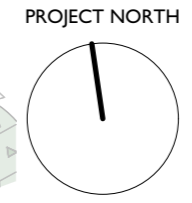
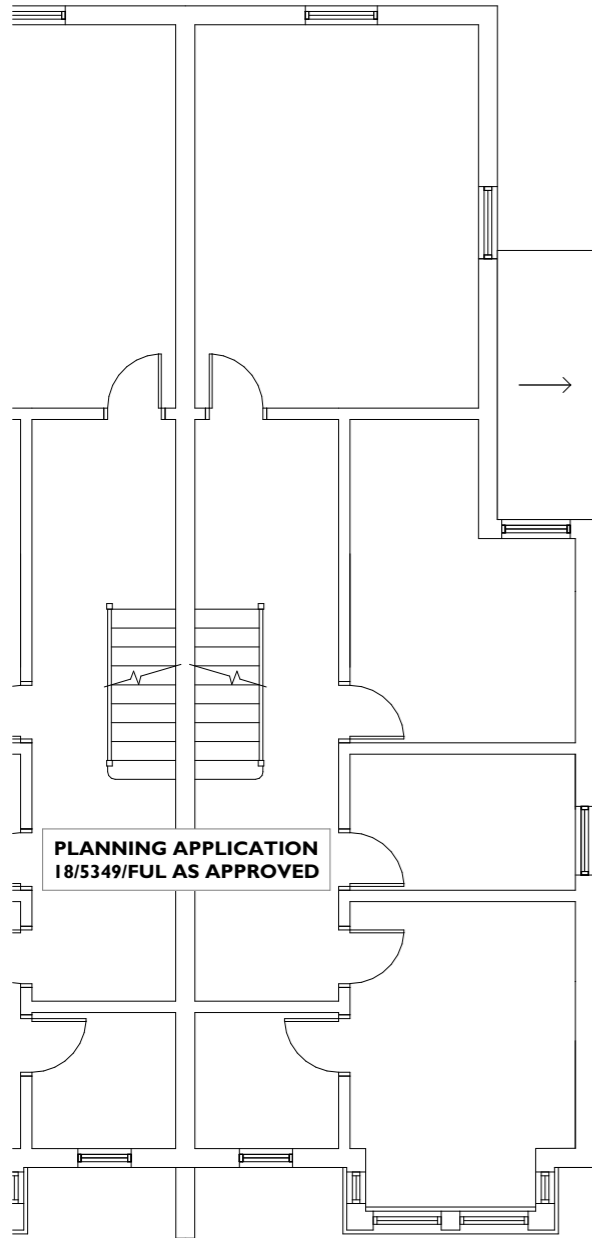


E:\Work\Google Drive\12105 115-117 Daws Lane, London NW7 4SJ\12105 115-117 Daws Lane, London NW7 4SJ.pln 08/04/2021 10:55



© Eyal Moran Architects LTD. Do not reproduce the drawing without written permission.

PLANNING APPLICATION
18/5349/FUL AS APPROVED

BEDROOM 4
A: 18.47 m²

BEDROOM 4
A: 18.47 m²

EN-SUITE
A: 2.38 m²

EN-SUITE
A: 2.38 m²

BATHROOM
A: 3.74 m²

BATHROOM
A: 3.74 m²

BEDROOM 1
A: 7.89 m²

BEDROOM 1
A: 7.89 m²

HALLWAY
A: 8.69 m²

HALLWAY
A: 8.69 m²

EN-SUITE
A: 2.21 m²

EN-SUITE
A: 2.21 m²

BEDROOM 2
A: 10.22 m²

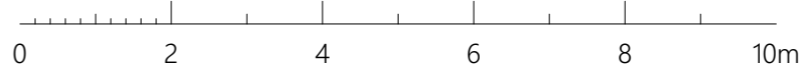
BEDROOM 2
A: 10.22 m²

BEDROOM 3
A: 9.16 m²

BEDROOM 3
A: 9.16 m²

BEDROOM 2
A: 10.22 m²

SCALE 1:100



PLANNING



EYAL MORAN ARCHITECTS

Rowlandson House
289-297 Ballards Lane
London N12 8NP

+44 (0)20 8369 6057
info@emarchitects.co.uk
www.emarchitects.co.uk

PROJECT
115-117 Daws Ln, London NW7 4SJ

DRAWING SCALE 1:100 @ A3 DRAWN BY OF
Proposed First Floor Plan

PROJECT NO / DRAWING NO REVISION
12105/P006