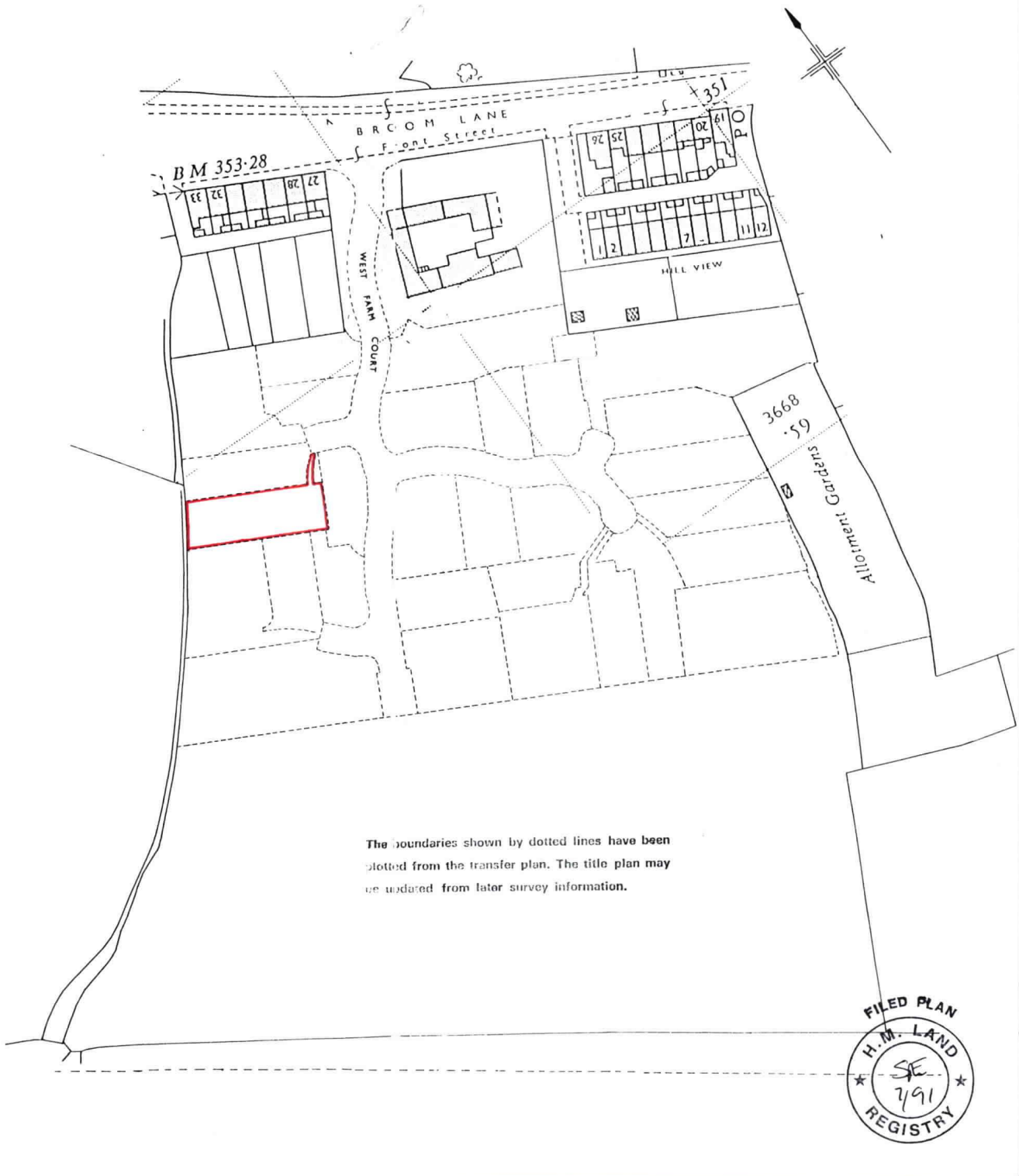


H.M. LAND REGISTRY		TITLE NUMBER	
		DU 166579	
ORDNANCE SURVEY PLAN REFERENCE	NZ 2441	SECTION B	Scale 1/1250 Enlarged from 1/2500
COUNTY DURHAM	DISTRICT DURHAM		© Crown copyright



The boundaries shown by dotted lines have been plotted from the transfer plan. The title plan may be updated from later survey information.

This is a copy of the title plan on 17 FEB 2021 at 21:31:13. This copy does not take account of any application made after that time even if still pending in HM Land Registry when this copy was issued.

This copy is not an 'Official Copy' of the title plan. An official copy of the title plan is admissible in evidence in a court to the same extent as the original. A person is entitled to be indemnified by the registrar if he or she suffers loss by reason of a mistake in an official copy. If you want to obtain an official copy, the HM Land Registry web site explains how to do this.

HM Land Registry endeavours to maintain high quality and scale accuracy of title plan images. The quality and accuracy of any print will depend on your printer, your computer and its print settings. This title plan shows the general position, not the exact line, of the boundaries. It may be subject to distortions in scale. Measurements scaled from this plan may not match measurements between the same points on the ground.

This title is dealt with by HM Land Registry, Durham Office.

© Crown Copyright. Produced by HM Land Registry. Further reproduction in whole or in part is prohibited without the prior written permission of Ordnance Survey. Licence Number 100026316.