

1. Hours of Construction

The working Hours on site shall be as follows:-

Monday to Friday: - 07:30 to 18:00

Saturday: - 08:00 to 13:00

No work on Sundays or public holidays without prior permission from the local authority.

2. Erection and Maintenance of Hoarding and tree protection fencing

Secure security fencing will be erected on the front and rear boundary, and where there are any gaps in the side boundaries to ensure that the general public are protected from any potential hazards throughout the works.

3. Parking of vehicles for site personnel, operative and visitors

All contractors parking can be accommodated within the confines of the site. Parking will be placed on areas with road sub base/hogging to prevent surface being churned into mud.

4. Loading and Unloading of plant and Materials

- a. There will be a designated area within the site for loading and unloading plant and materials, this will be reviewed as the project progresses.
- b. All deliveries will be on rigid vehicles.
- c. Proposed delivery times are as follows to avoid peak traffic times. i. Monday to Friday: - 07:30 to 18:00 ii. Saturday: - No Deliveries.

5. Suppression of Dust

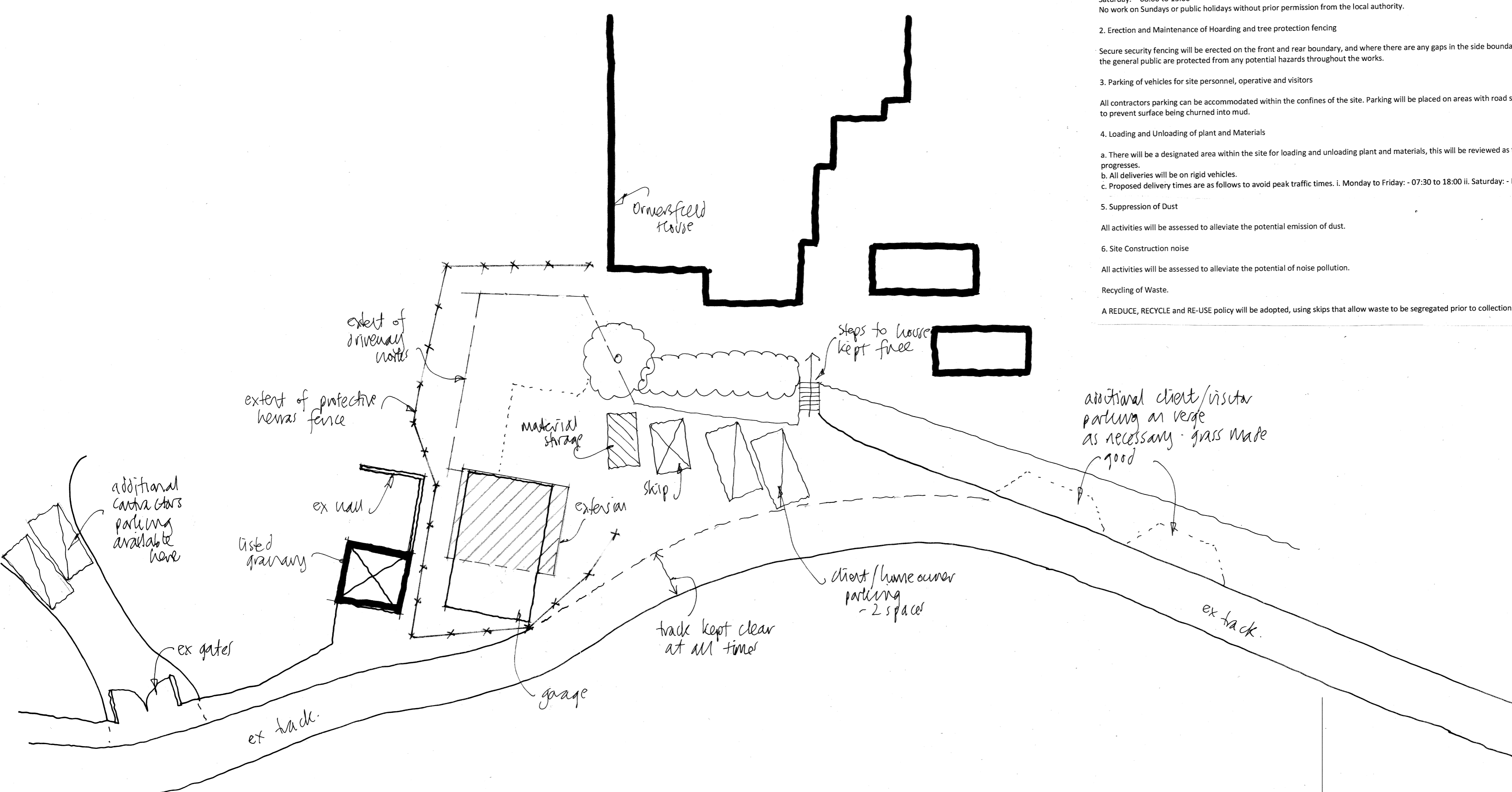
All activities will be assessed to alleviate the potential emission of dust.

6. Site Construction noise

All activities will be assessed to alleviate the potential of noise pollution.

Recycling of Waste.

A REDUCE, RECYCLE and RE-USE policy will be adopted, using skips that allow waste to be segregated prior to collection.



FUSION Architecture Ltd Orchard End Hazeley Bottom Hartley Wintney Hampshire RG27 8LU Tel/Fax 01252 842026	
Job Title Ormersfield House Dogmersfield Hook RG27 8TA	
Client Mr and Mrs Miles	
Drawing Title Contractors' parking/construction method statement	
Scale As shown	Dwg size ...A2
Drwg No. 2084/57	Rev