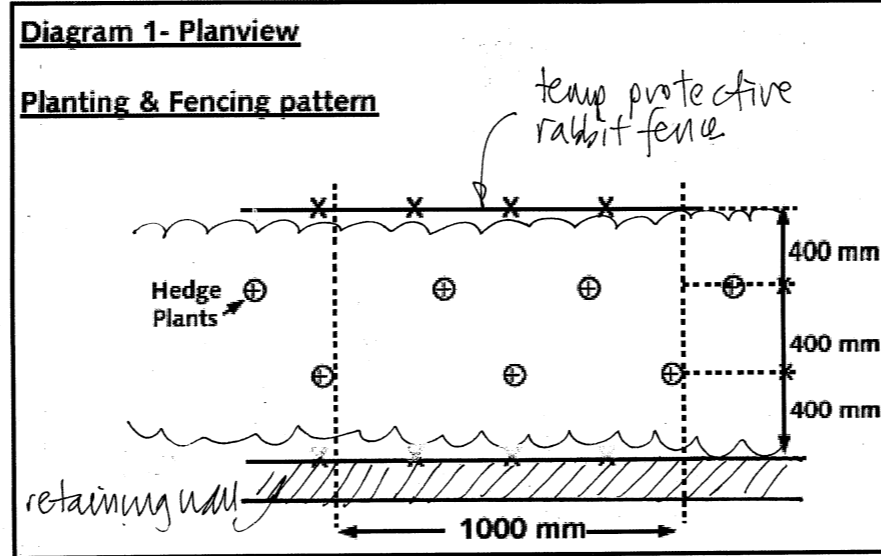
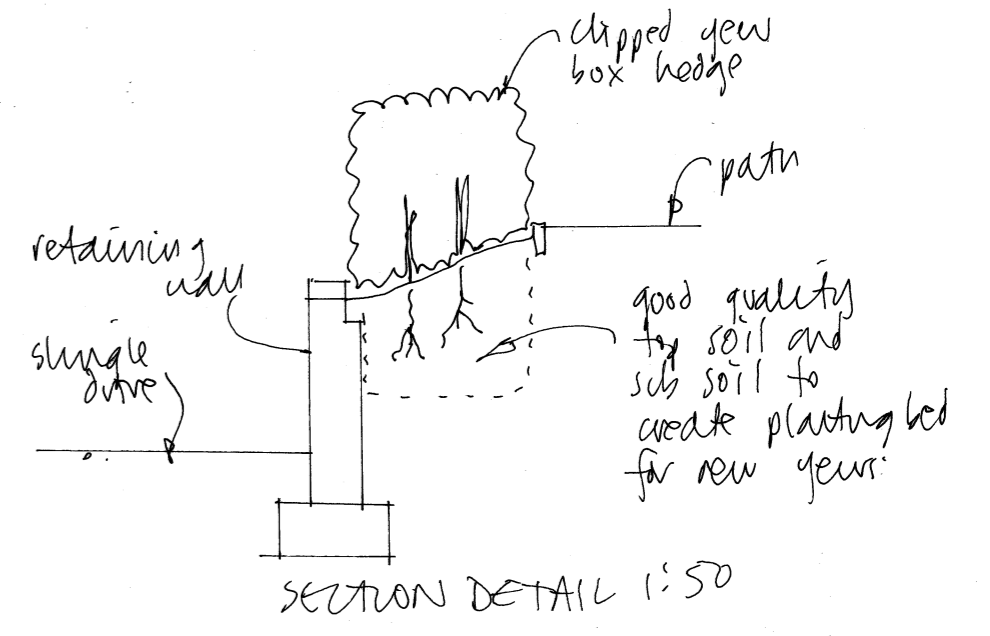
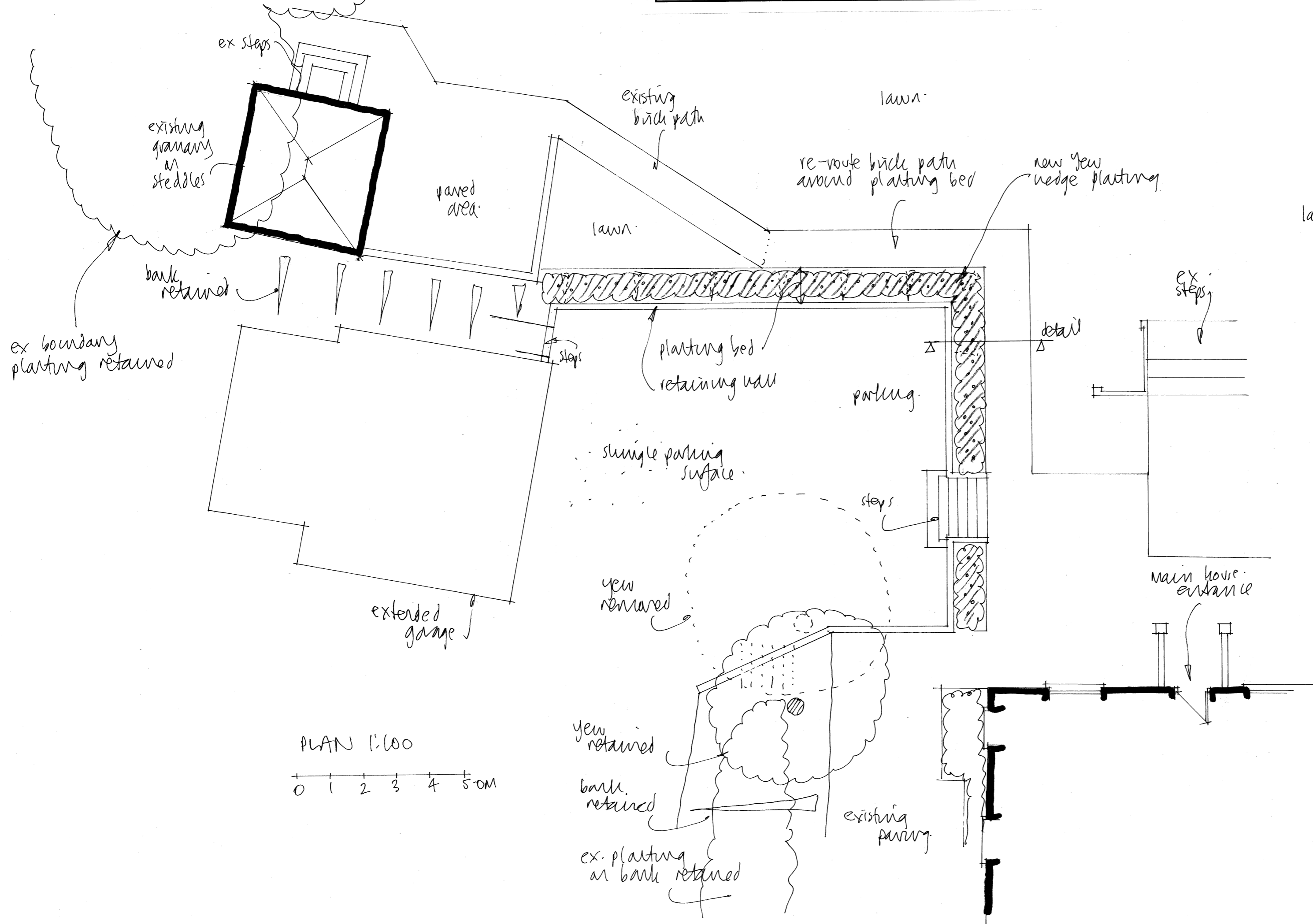


Hedging should be planted in two, staggered rows at a density of not less than 5 per meter (see diagram 1), with approximately 450mm between plants in the same row, and 300-400mm between rows.

All hedgerow planting should be carried out in accordance with BS4428:1989, Code of practice for general landscape operations (excluding hard surfaces). Hedgerow shrubs should either be notch planted or trench planted. Hedge trenches should be dug to a minimum depth of 400mm and width of 600mm, with the plants put into the ground at the same depth at which they had been previously grown in the nursery. All plants need to be well heeled in after planting and watered in during dry weather. Most hedging plants are supplied as bare root specimens, and it is important to make sure that the roots do not dry out, therefore it is advisable to keep them under a moist cloth or in a bucket of water during planting. Hedges should only be planted between November and March, while plants are still dormant. Avoid planting in very cold or wet weather.



view of trimmed yew hedging on top of retaining wall



FUSION Architecture Ltd		
Orchard End Hazeley Bottom Hartley Wintney Hampshire RG27 8LU Tel/Fax 01252 842026		
Job Title		
Ormersfield House Dogmersfield Hook RG27 8TA		
Client		
Mr and Mrs Miles		
Drawing Title		
Landscape/planting scheme		
Scale	As shown	Dwg size ...A2
Drwg No.	2084/58	Rev