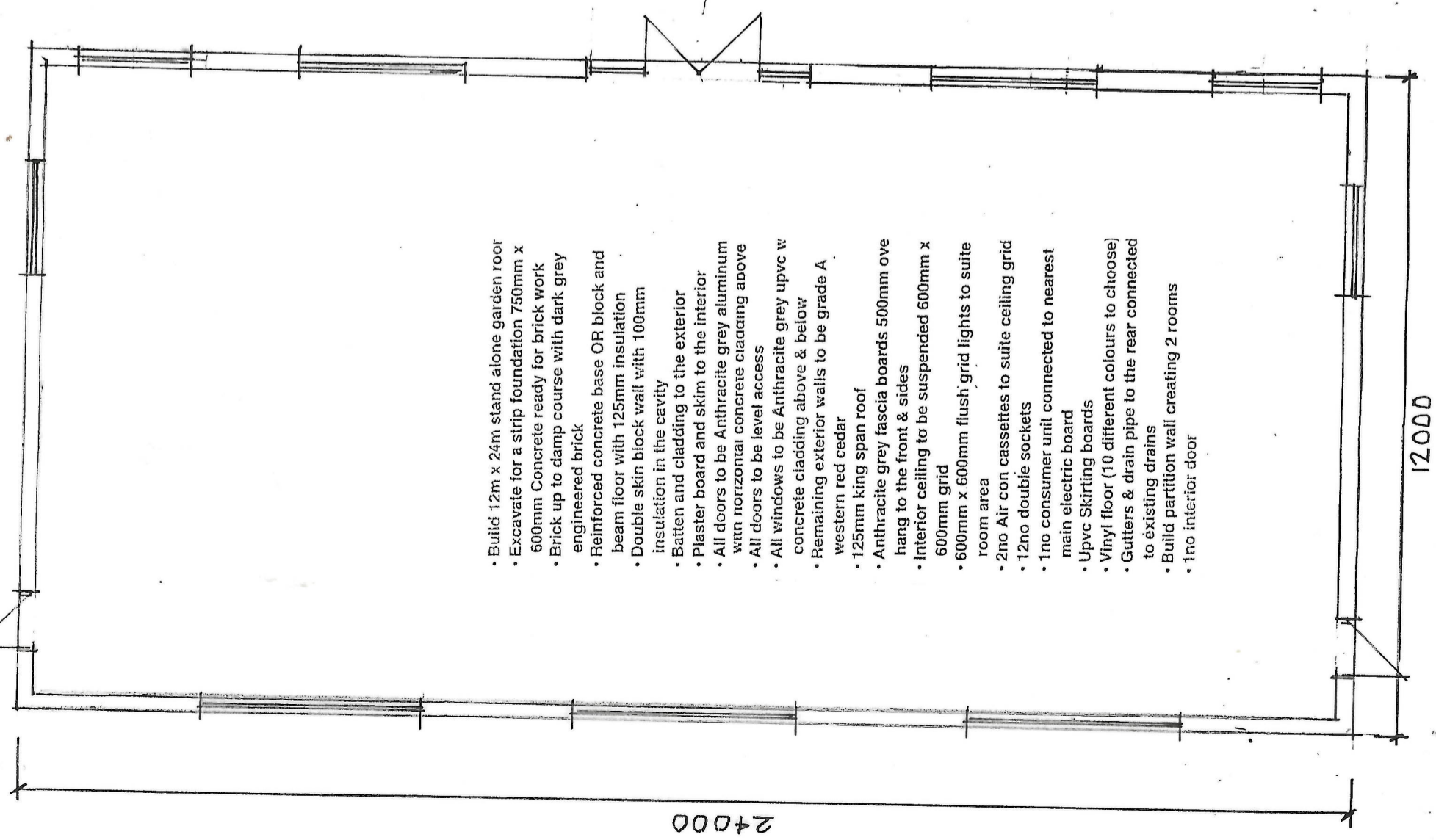


PROPOSED GARDEN ROOM RAINHILL HIGH SCHOOL

DRG No 6581/RHS/1
SCALE 1:100

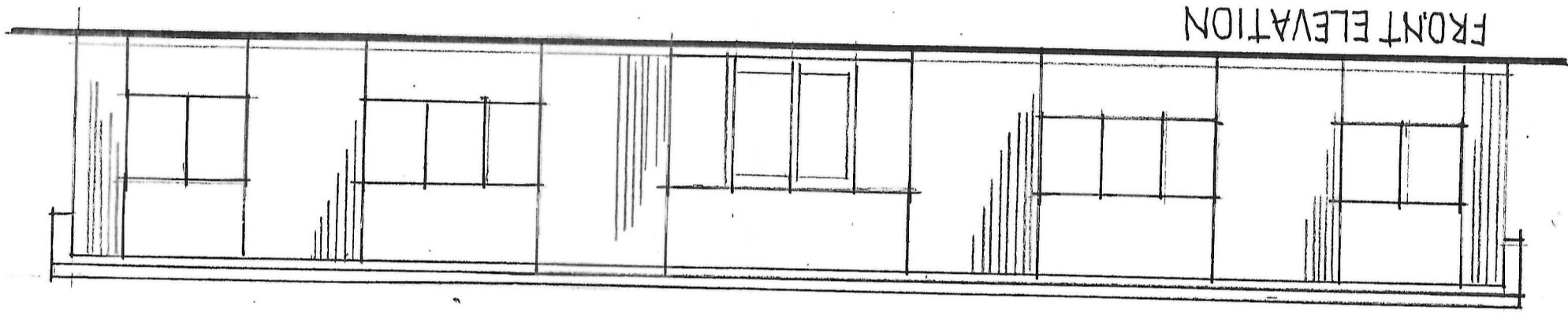


- Build 12m x 24m stand alone garden room
- Excavate for a strip foundation 750mm x 600mm Concrete ready for brick work
- Brick up to damp course with dark grey engineered brick
- Reinforced concrete base OR block and beam floor with 125mm insulation
- Double skin block wall with 100mm insulation in the cavity
- Batten and cladding to the exterior
- Plaster board and skim to the interior
- All doors to be Anthracite grey aluminum with horizontal concrete cladding above
- All doors to be level access
- All windows to be Anthracite grey upvc w concrete cladding above & below
- Remaining exterior walls to be grade A western red cedar
- 125mm king span roof
- Anthracite grey fascia boards 500mm ovc hang to the front & sides
- Interior ceiling to be suspended 600mm x 600mm grid
- 600mm x 600mm flush grid lights to suite room area
- 2no Air cassettes to suite ceiling grid
- 12no double sockets
- 1no consumer unit connected to nearest main electric board
- Upvc Skirting boards
- Vinyl floor (10 different colours to choose)
- Gutters & drain pipe to the rear connected to existing drains
- Build partition wall creating 2 rooms
- 1no interior door

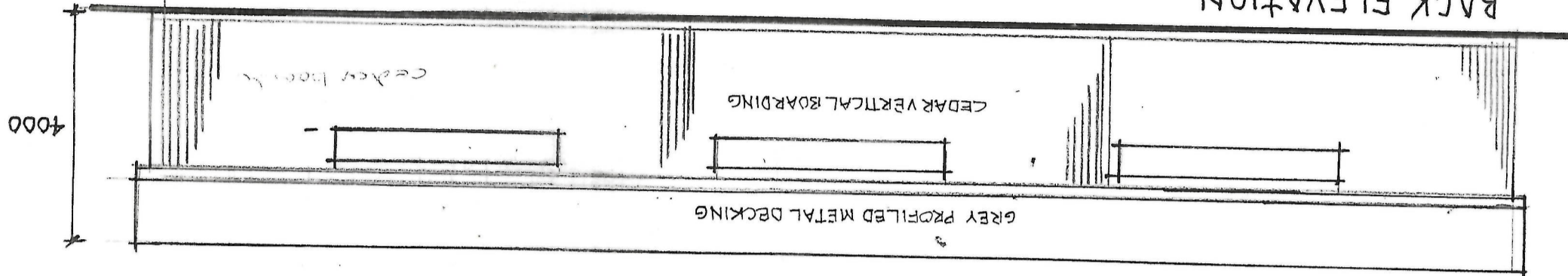
PROPOSED GARDEN ROOM RAINHILL HIGH SCHOOL

SCALE 1:100

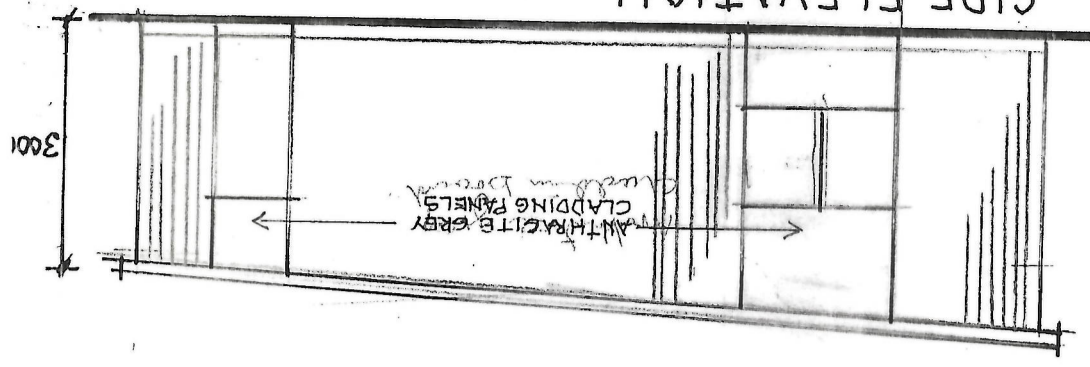
ZOP



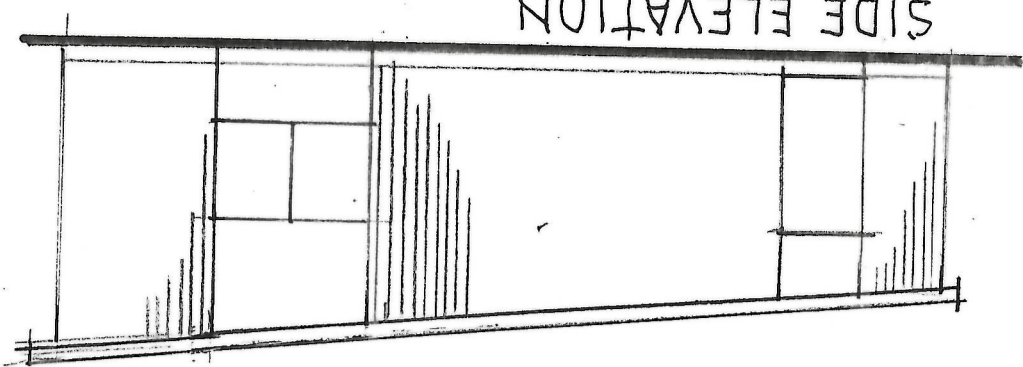
FRONT ELEVATION



BACK ELEVATION



SIDE ELEVATION



SIDE ELEVATION