

New pitched roof added to match/align existing using matching tiles laid at approved gauge and min lap on 38x25 s.w. battens, on Tyvek-Supro or similar approved felt & B.S.747 on new min 100x50 s.w. rafters at max 400% to new min 170x20 s.w. ridge board, supported at mid-span on new 147x75 s.w. purlin built into new gable and off M.S. hanger to existing with 100x50 s.w. collars at every max 4th rafter, with M.S. straps added to restrain mid-end three rafters to gables at max 1200% At eaves tyvek over s.w. fillet over new fascia to align exty at exty o/hang as per tyvek spec/detail, with unvented soffit and new 100 R.W. gutter to align existing to new RWP

New min 100x50 s.w. ceiling joists, level with exty at max 400%, built into new gable then off M.S. hangers off s.w. bearer & exty gable, then at front and rear 100x50 s.w. noggin off joists fixed to new rafters, with 100x50 s.w. pole plates, provide min 150 quilt between then min 125 over then 12.5 fill backed p/ld - plan ceiling

New warm deck type flat roof added (all exty removed) using approved single layer membrane - to L.A. approval on-site, border to B.S.747 - CP 144 to new min 126mm ins. board - to L.A. approval on-site on new 50mm wide s.w. firrings laid to min 140 fall etc. - see roof plan on new 170x50 s.w. joists at max 400% built into new wall then off M.S. hangers off s.w. bearer & exty wall, with M.S. straps to restrain min end three joists parallel to walls at max 1200% then new s.w. battens at 12.5 p/ld - s/w to align existing ceiling. At eaves felt over s.w. batten as drip on fascia at suggest 300 o/hang, with unvented soffit and new 100 p R.W. gutter to 75 p RWP. At sides felt over angled fillet down over fascia at 2nd o/hang past walls, then at wall felt over fillet under 150 deep code & lead flashing set into wall

SITE PLAN 1:500

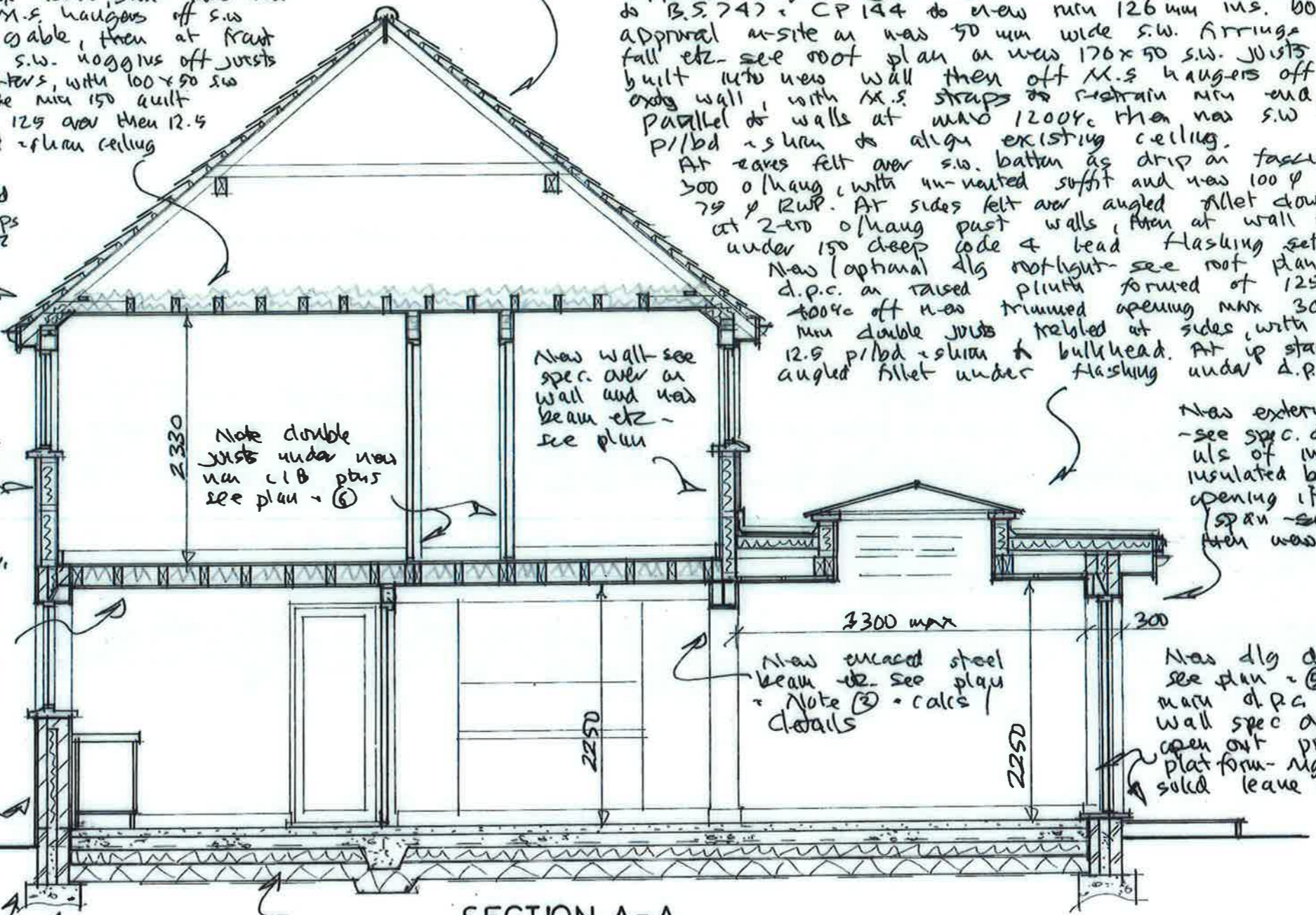
At eaves new 100x50 rafters birds mouthed over new 125x90 stud wall with M.S. straps for added restrain then down to eaves etc - see spec above. At junction provide 60 celotex between then 80 celotex under plus 12.5 p/ld - skin to sloping soffit

New F.F. of timber frame, using min 125x90 at max 400% with 125x100 @ corners and reveals and over as lintel, with 110 celotex between then 12.5 p/ld + skin inside then out side vapour barrier then 12mm ext. ply then E.M.L. then 2 coat s/c render to B.S.9262 to match/align exty and G.F. - see also plan spec

New flooring added to align existing using new 22mm t.g. edge flow grade chipboard on new min 147x47 s.w. joists at max 400% off M.S. straps off s.w. bearer & exty and built into new side wall. Provide M.S. straps to lateral restrain min end three joists to parallel walls at max 1200% provide min 100mm mineral wool as sound ins. in detail draped over new joists then 12.5 p/ld - skin ceiling

New G.F. extension in cavity const, min 300 wide of double 100 lightweight block skins in 1:2:4 mix - to exty via M.S. crocodile plates, with vertical d.p.c. at reveals, with insulated cavity closer with mass fill quilt batts to new 100 cavity on E.S. wall ties at max 400% horiz + 450% vertical with 2 coat plaster inside and 2 coat s/c render to B.S.9262 to match existing

New 4/6 windows - see plan - (6), with insulated catnic lintel over etc New d.p.c. lapped over existing at min 150 above ground (paths then double flatter brick skins down to new foundation, with lean-mix fill to cavity below ground all a new min 1000 (overall) deep & wide, actual depth det on-site to L.A. approval x min 500 wide (see plan) of 1:2:4 mix etc see slab spec above (over



New solid floor laid level with existing floor of min 50 s/c screed on min 100 conc. slab of 1:2:4 mix using max 40 p egg. and sulphate resistant cement, with slab min 300x300 under new lean m/c block ptu - (see 6), on min 50, suggest 100 celotex - turned up at perimeter, on 1200 gauged d.p.m. lapped up over new and exty d.p.c. on min 150 well consolidated hard core / blinding

New (optional) d/g rooflight - see roof plan, with cill on d.p.c. on raised plinth formed of 125x50 stud at 400% off new trimmed opening max 3000x1500 on min double joists trebled at sides, with 110 celotex then 12.5 p/ld - skin & bulkhead. At up stand felt over angled fillet under flashing under d.p.c. at all

New external (cavity wall) - see spec over and plan & use of insulation note was insulated beam as lintel over opening if as per plan spec (span - see calc (details then new joists on top etc

New d/g doors - frame etc see plan - (6) with all on main d.p.c. - wall etc - see wall spec over then if doors open out provide level access platform - suggest decking or if solid leave min 50 gap at wall

SECTION A-A