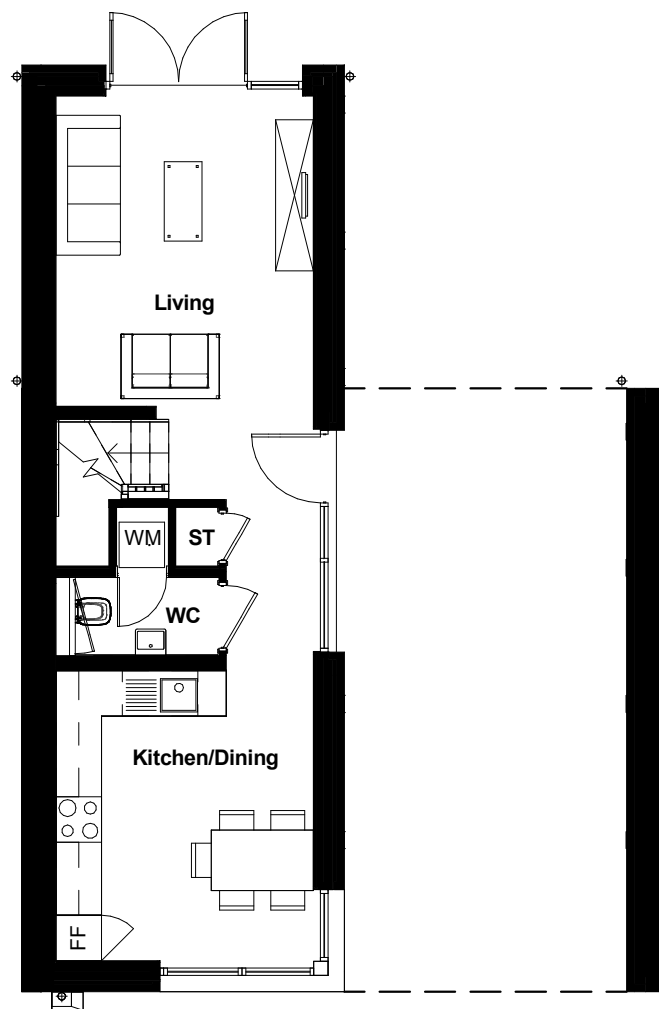


PLOT NUMBER 078
HOUSE TYPE Terrace
LOCATION In accordance with drawing PL_033 'Site Layout' and plot specific Site Layout drawings (or any subsequent update agreed with the Local Authority).

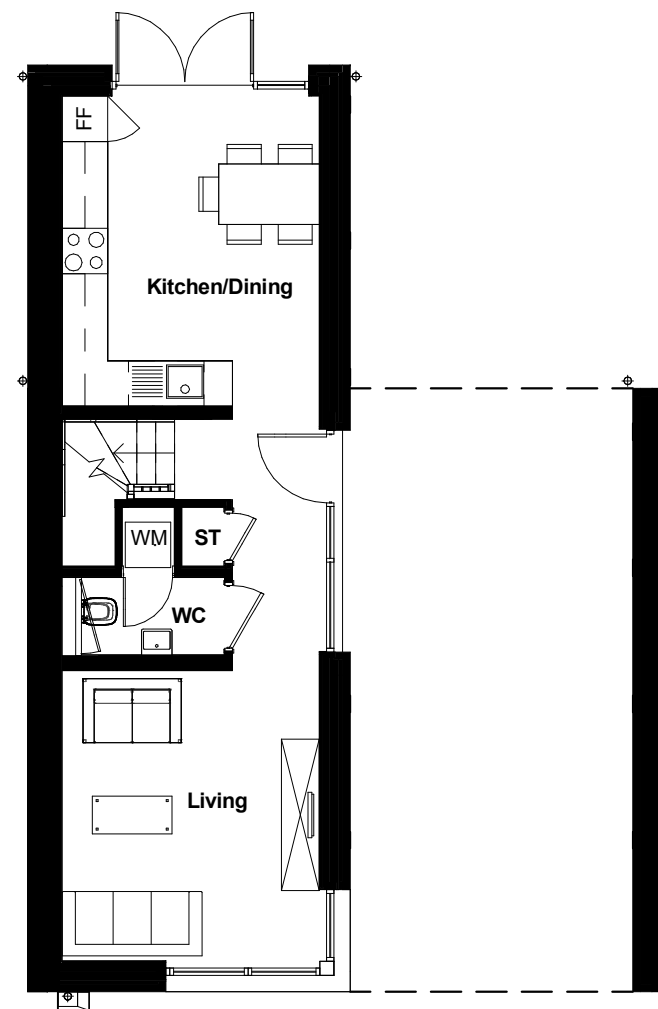
*Refer to design code section 5.4.7 for allowed brick paint accent locations

**Refer to design code section 5.4.5 for allowed feature window types and locations

PLOT TYPE	GROUND FLOOR PLAN	FIRST FLOOR PLAN	SECOND FLOOR PLAN	ELEVATION CODE	BRICK	BRICK PAINT ACCENT*	TILE	FEATURE WINDOW**	WINDOW FRAME COLOUR	PLOT RESTRICTIONS
T	G01 : PL_250 A G02 : PL_250 A G03 : PL_250 A G04 : PL_250 A G05 : PL_251 A G06 : PL_251 A G07 : PL_251 A G08 : PL_251 A	F01 : PL_252 A F02 : PL_252 A		PL_336 B PL_337 B PL_338 B PL_339 B PL_340 B PL_341 B PL_342 B PL_343 B	Red Brick Buff Brick	None White Painted Black Painted	Terracotta Brindle	None One	Black Dark Brown Light Green Mid Grey	Must be Standard (T) version of this house type



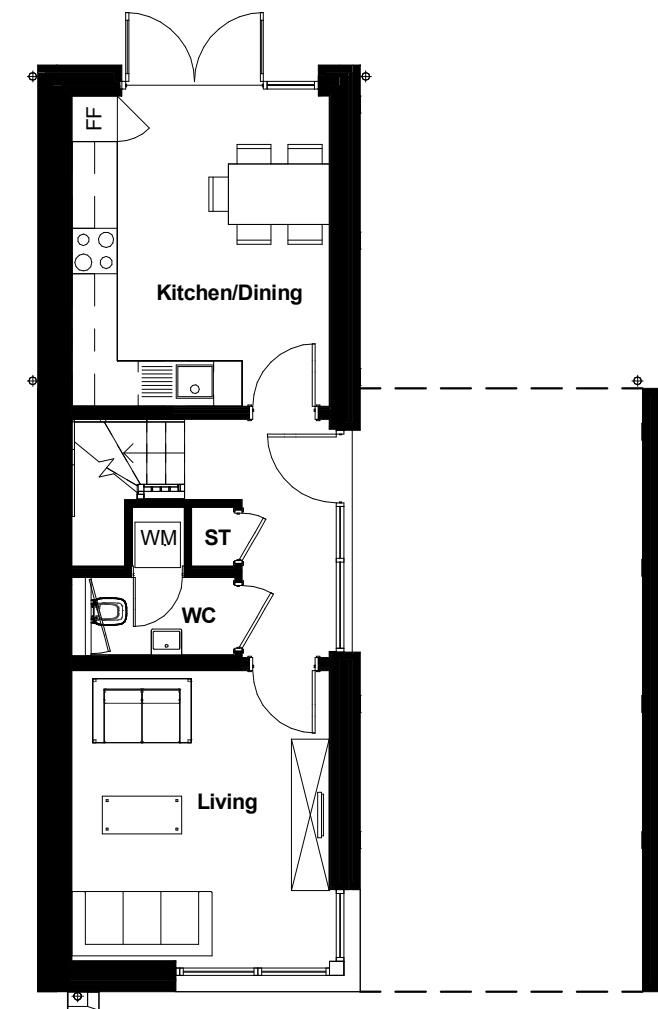
T-G01



T-G02



T-G03



T-G04

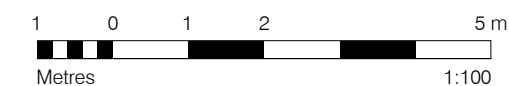
A 20.10.17 NMA Planning Update
 - 10.06.16 PLANNING ISSUE

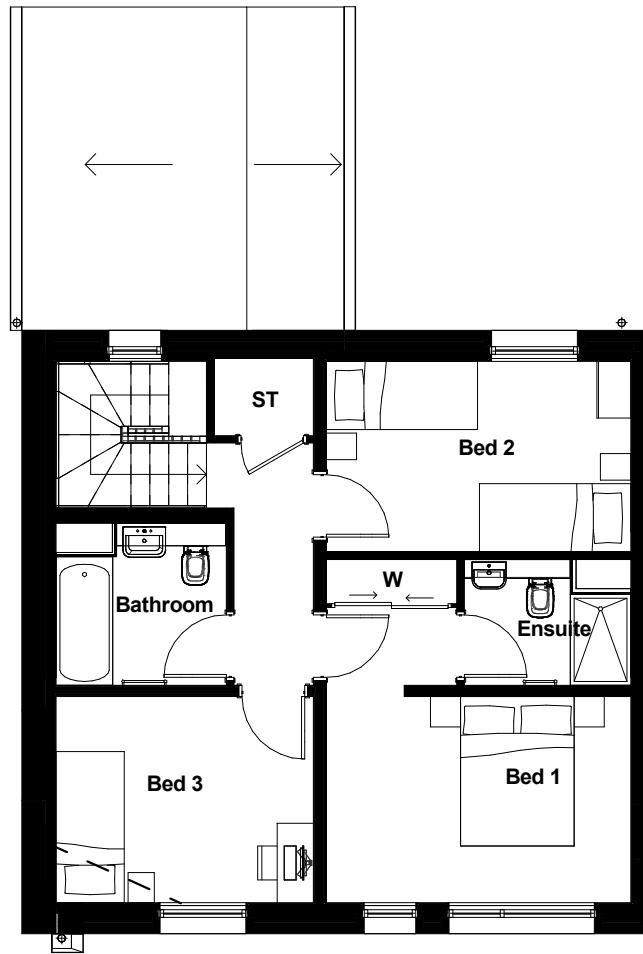
MG RP
 KN LG

Beechwood - West
 PL_250
 16-088
 Terrace
 Ground Floor Plans

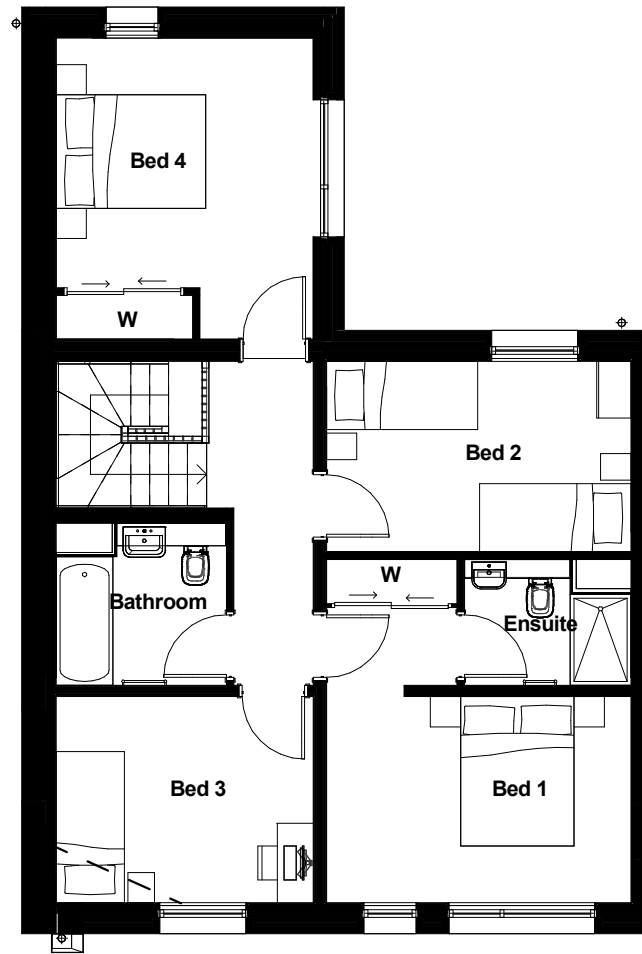
Scale 1 : 100@A3
 10.06.16

revision
 A





T-F01



T-F02

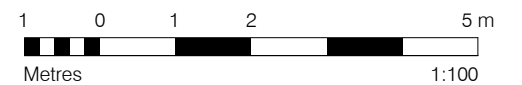
A 20.10.17 NMA Planning Update
 - 10.06.16 PLANNING ISSUE

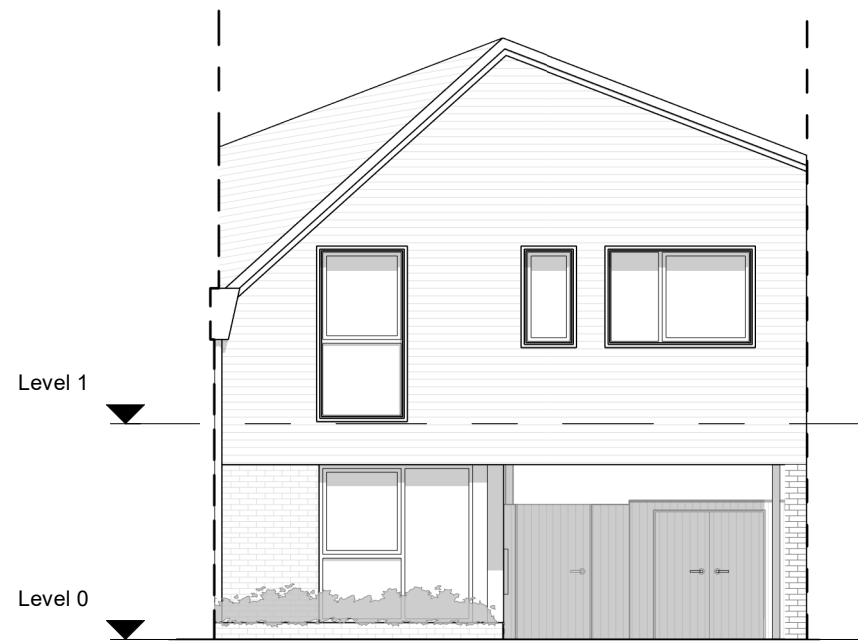
MG RP
 KN LG

Beechwood - West
 PL_252
 16-088
 Terrace
 First Floor Plans

Scale 1 : 100@A3
 10.06.16

revision
 A





Front Elevation





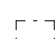
Scale: 1 : 100



Rear Elevation

Scale: 1 : 100

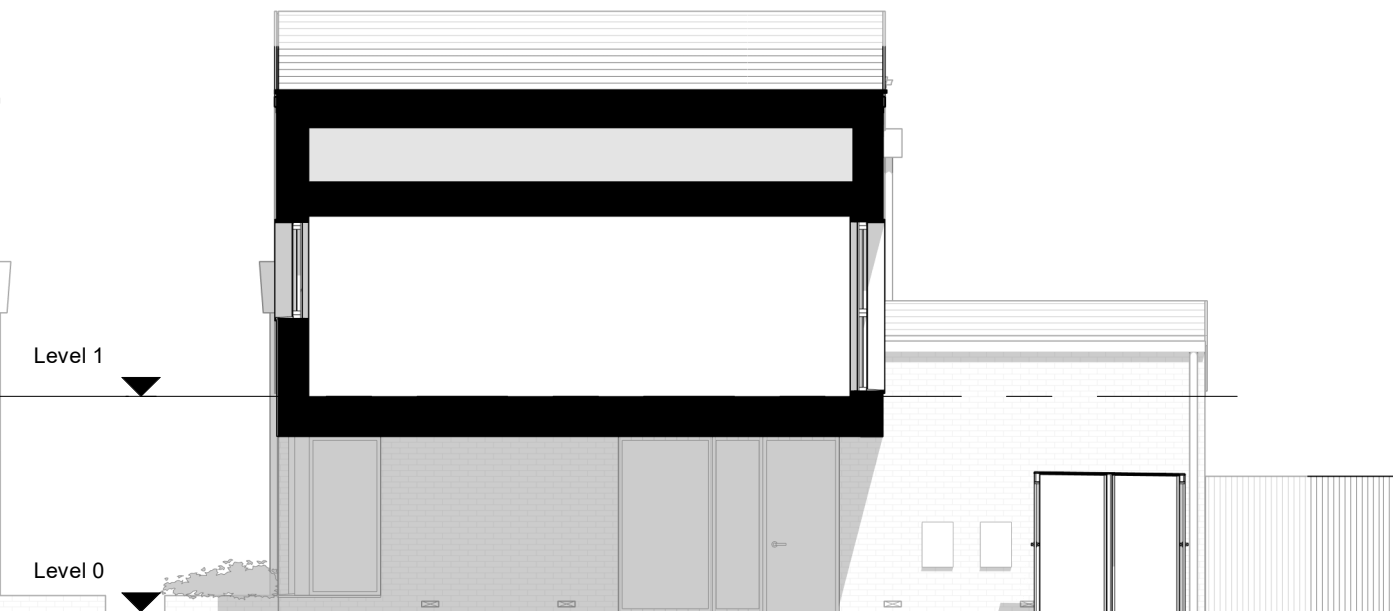
Materials Hatch Key

-  Brick
-  Clay Tile
-  Timber Fence
-  Obscured Glazing
-  Location of Optional Feature Window



Section 1

Scale: 1 : 100

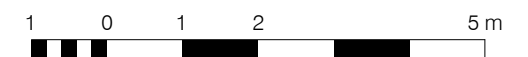


Section 2

Scale: 1 : 100

B 03.03.20 NMA Planning Update KN MM
 A 20.10.17 NMA Planning Update MG RP
 - 10.06.16 PLANNING ISSUE KN LG

Beechwood - West
 PL_340
 16-088
 Terrace
 Elevations - T - Tile 3B

Scale 1 : 100@A3 revision
 10.06.16 B

 Metres 1:100