

Greggs Drive Thru

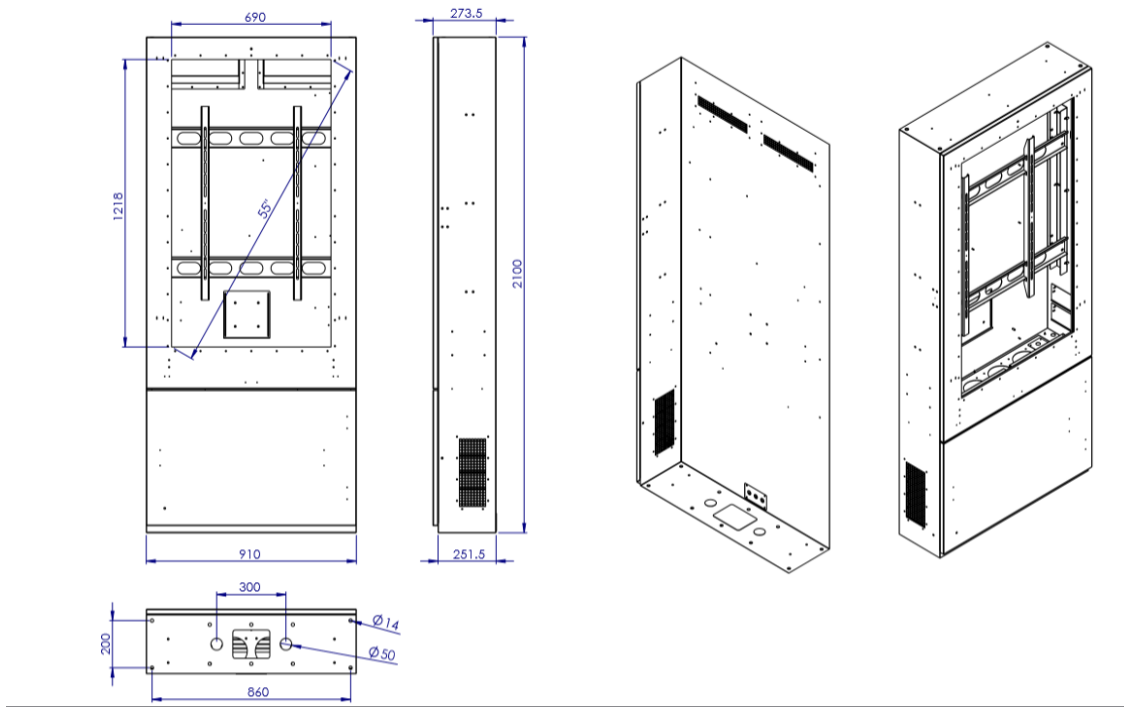
Completed by: Liam Frater, Beyond Digital Solutions.

Greggs Drive Thru

1. This document outlines the specifications and requirements needed for the digital signage element. Based on the previous 5 sites.

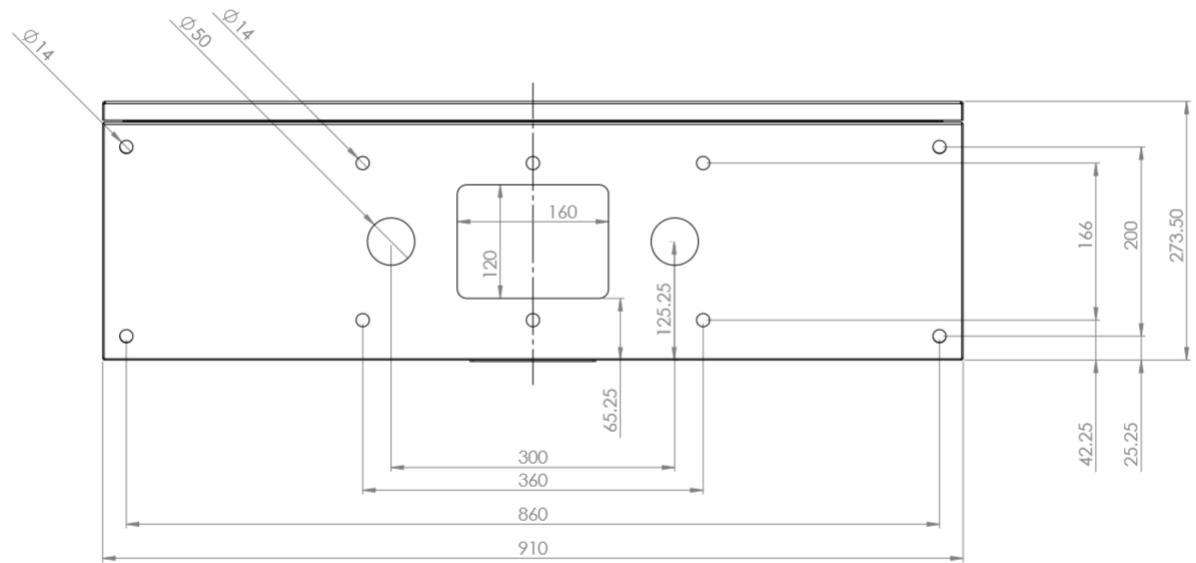


2. Totem Dimensions



- a. Height: 2100 mm
- b. Width: 910mm
- c. Depth: 273.5mm

3. Base Plate Dimensions



- a. 910mm X 273.50mm

4. Concrete Base Requirements

- a. Concrete base to be 1060mm x 1060mm, minimum depth 200mm.
- b. Concrete base starts at inner edge of kerb side.

5. Services Required via duct

- a. All Screen locations require individual power. The power output per Enclosure is around 784 (w) Presented within a wiska box.
- b. All Screen locations require individual data, leading back-to-back office. Presented as a cat6 terminated RJ45 cable.
- c. Service ducts should be presented 605mm from inner kerb.

6. Beyond Digital Method of works

- a. Drill holes as per base plate (Minimum 200mm)
- b. Set threaded rod into holes using concrete resin.
- c. Once Set, lower enclosure over rods, feeding presented power and data up into enclosure
- d. Fix down and secure with suitable nuts.
- e. Wire power into enclosure
- f. Test power and data
- g. Install screen and Media device.
- h. Test content and internet connection
- i. Clean inside enclosure with anti-static cleaning solution.



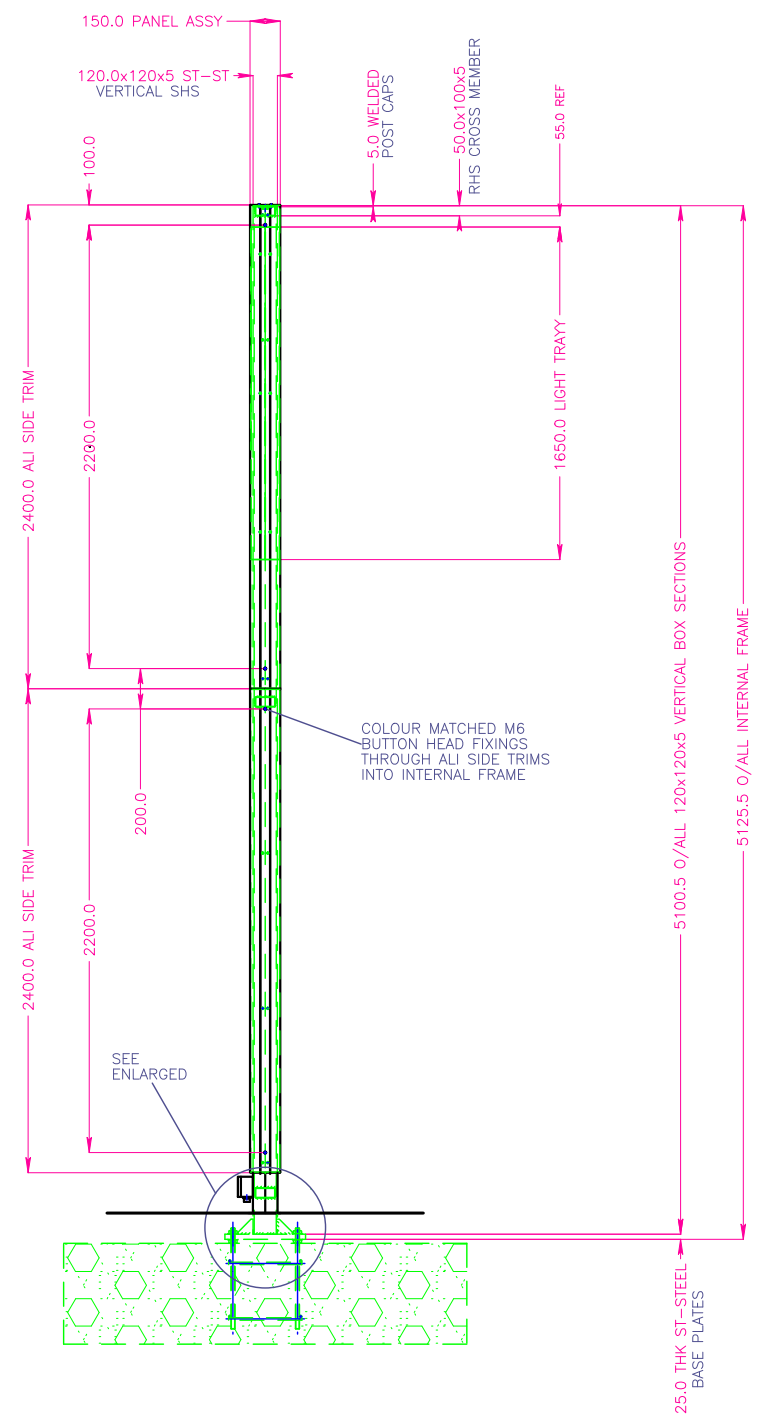
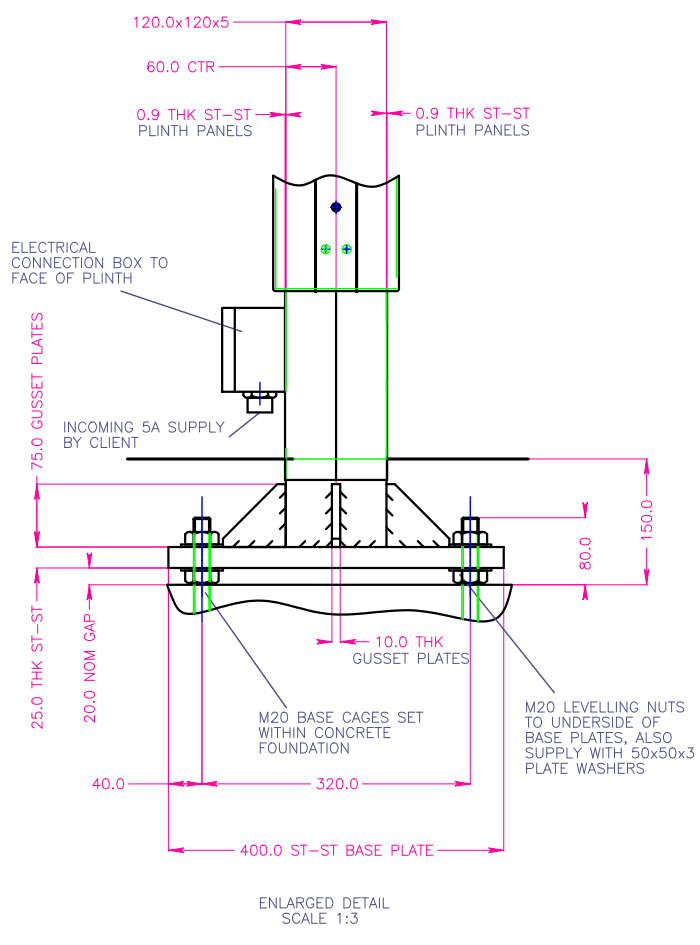
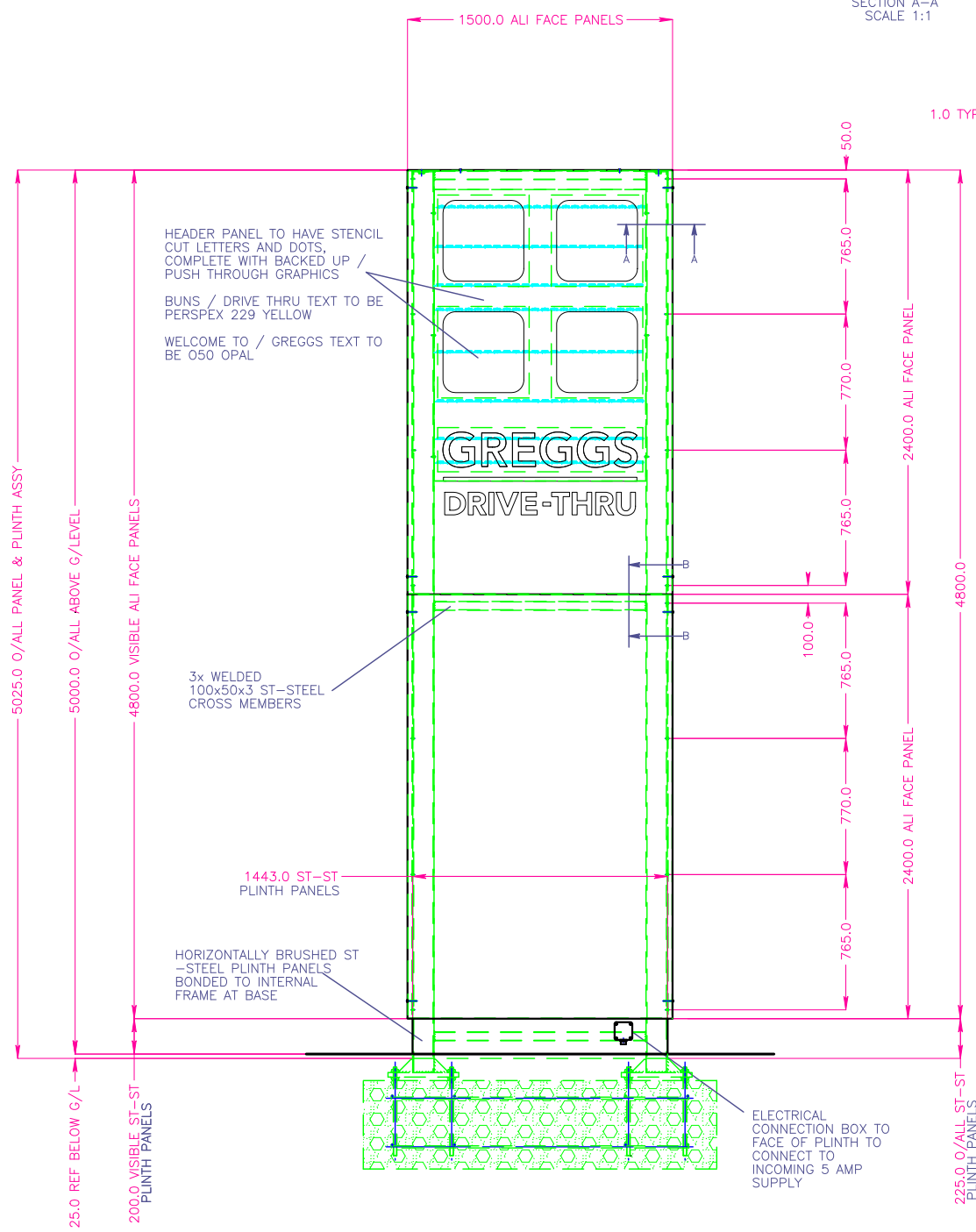
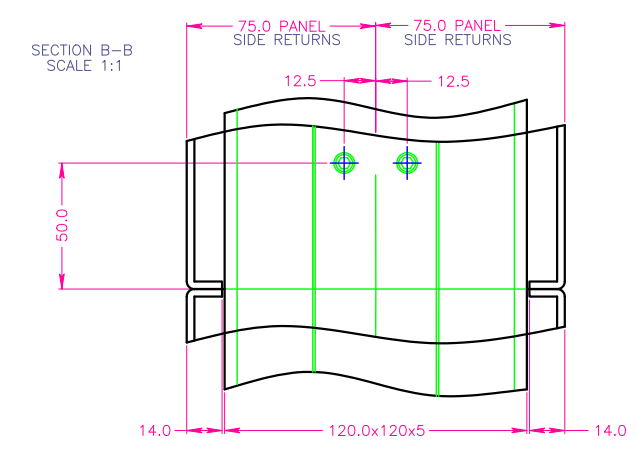
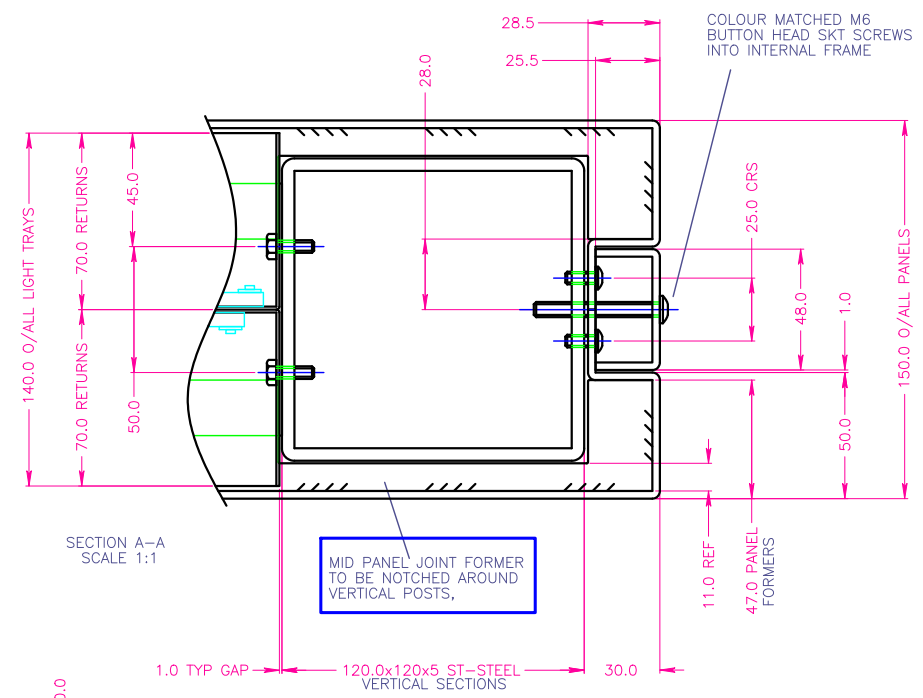
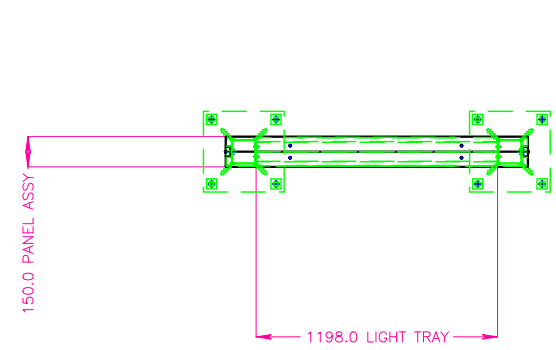
REV B GRAPHICS AMENDED
MJS 04/04/18

REV C 24 HOURS ADDED
MJS 09/04/18

REV D DRIVE THRU & 24 HOURS REMOVED
MJS 19/07/18

REV E ELECTRICAL CONNECTION BOX ADDED
JAS 21-2-19

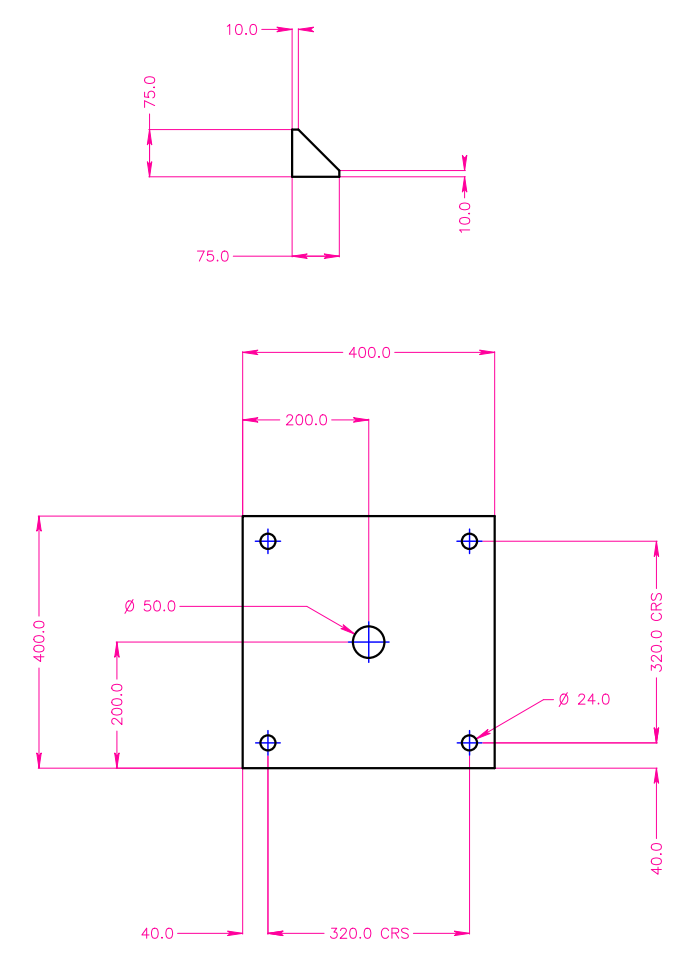
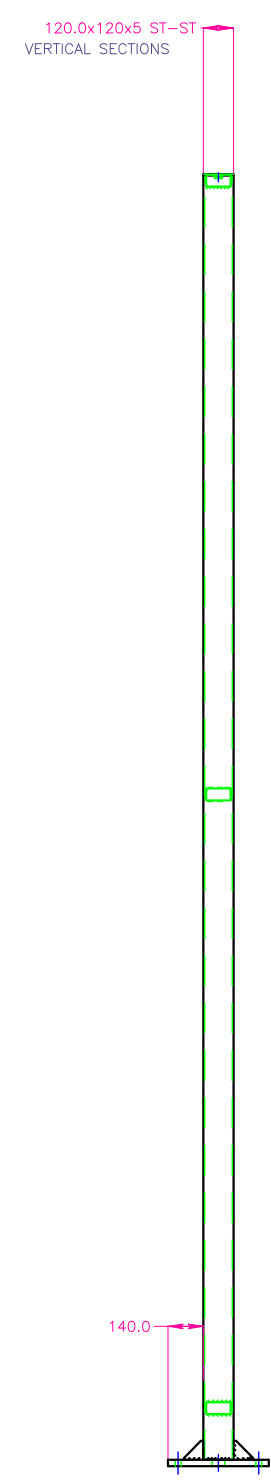
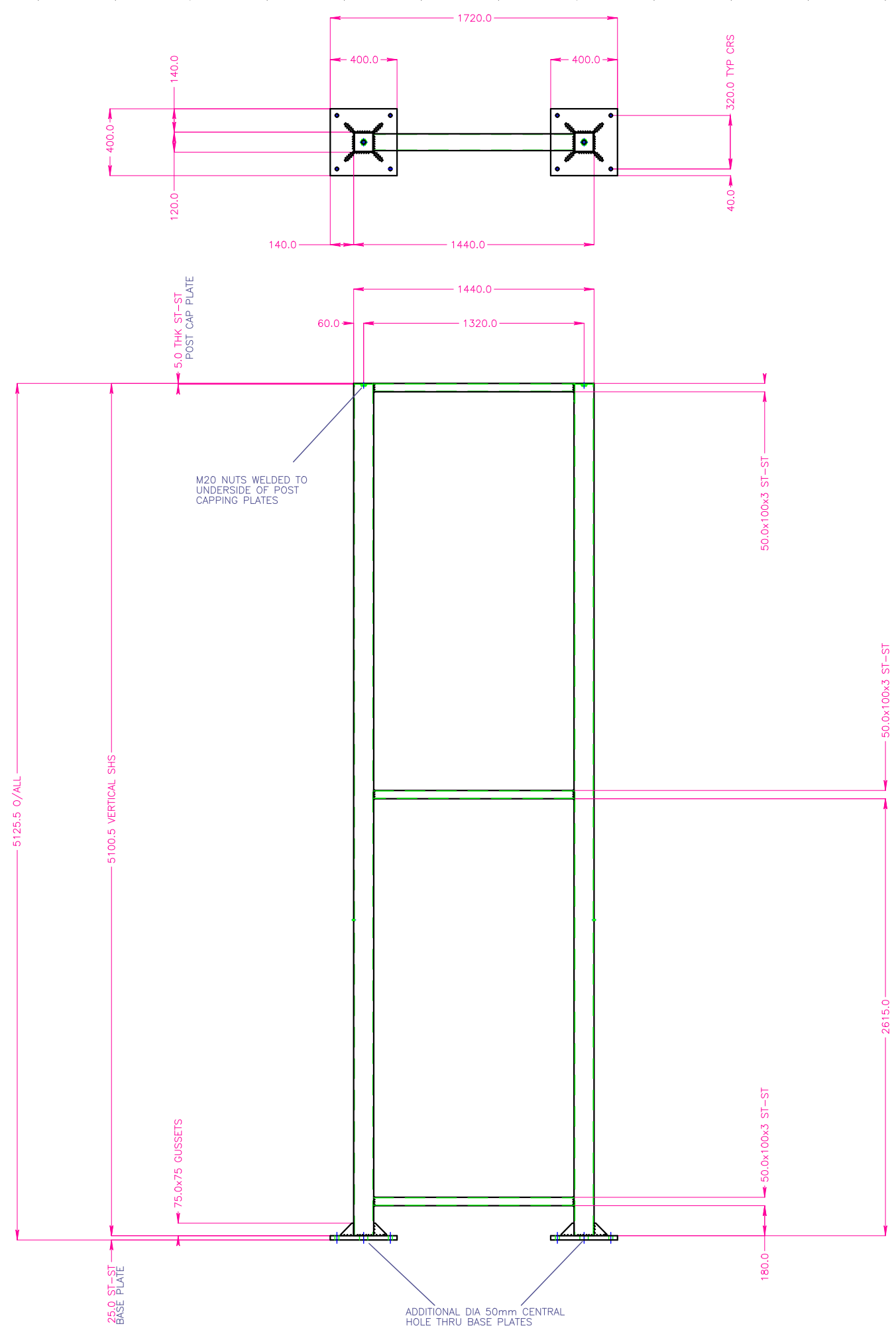
REV F VARIOUS AMMENDS + SECOND / THIRD PAGES ADDED FOR FOUNDATION, CAGE & FRAME DETAILS
MJS 27/10/20



NOTE:-
TOTEM PANELS TO HAVE PPC BLUE FINISH, RAL 5019

DRAWING APPROVAL STATUS	
STATUS A	DATE
THIS DRAWING HAS BEEN CHECKED AND CONFORMS TO DESIGN INTENT	
STATUS B	DATE
APPROVAL NOT REQUIRED	
STATUS C	DATE
UNCHECKED, NOT TO BE USED FOR MANUFACTURE	

CLIENT	GREGGS	
DETAIL	SM HIGH TOTEM - GENERAL ASSY	
ASSEMBLY / SITE		
MATERIAL	SEE DRG	
SCALE	DRAWN BY	DATE
1:12.5	M.J.S	29/03/2018
Wood & Wood International Signs Ltd Herton Road Sowerth Estate Exeter EX2 7JX Tel: 01392 444601 Fax: 01392 262268		
No part of this drawing & the design contained herein may be reproduced without the written consent of Wood & Wood International Signs Ltd.		
DRAWING NO.	REV	
19717 - PAGE 1/3	F	



REV B GRAPHICS AMENDED MUS 04/04/18

REV C 24 HOURS ADDED MJS 09/04/18

REV D DRIVE THRU & 24 HOURS REMOVED MJS 19/07/18

REV E ELECTRICAL CONNECTION BOX ADDED JAS 21-2-19

REV F VARIOUS AMMENDS + SECOND / THIRD PAGES ADDED FOR FOUNDATION, CAGE & FRAME DETAILS MJS 27/10/20

DRAWING APPROVAL STATUS	
STATUS A THIS DRAWING HAS BEEN CHECKED AND CONFORMS TO DESIGN INTENT	BY: [Signature] DATE: [Date]
STATUS B APPROVAL NOT REQUIRED	BY: [Signature] DATE: 20/03/18
STATUS C UNCHECKED, NOT TO BE USED FOR MANUFACTURE	

CLIENT: GREGGS

DETAIL: SM HIGH TOTEM - FRAME DETAILS

ASSEMBLY / SITE:

MATERIAL: SEE DRG

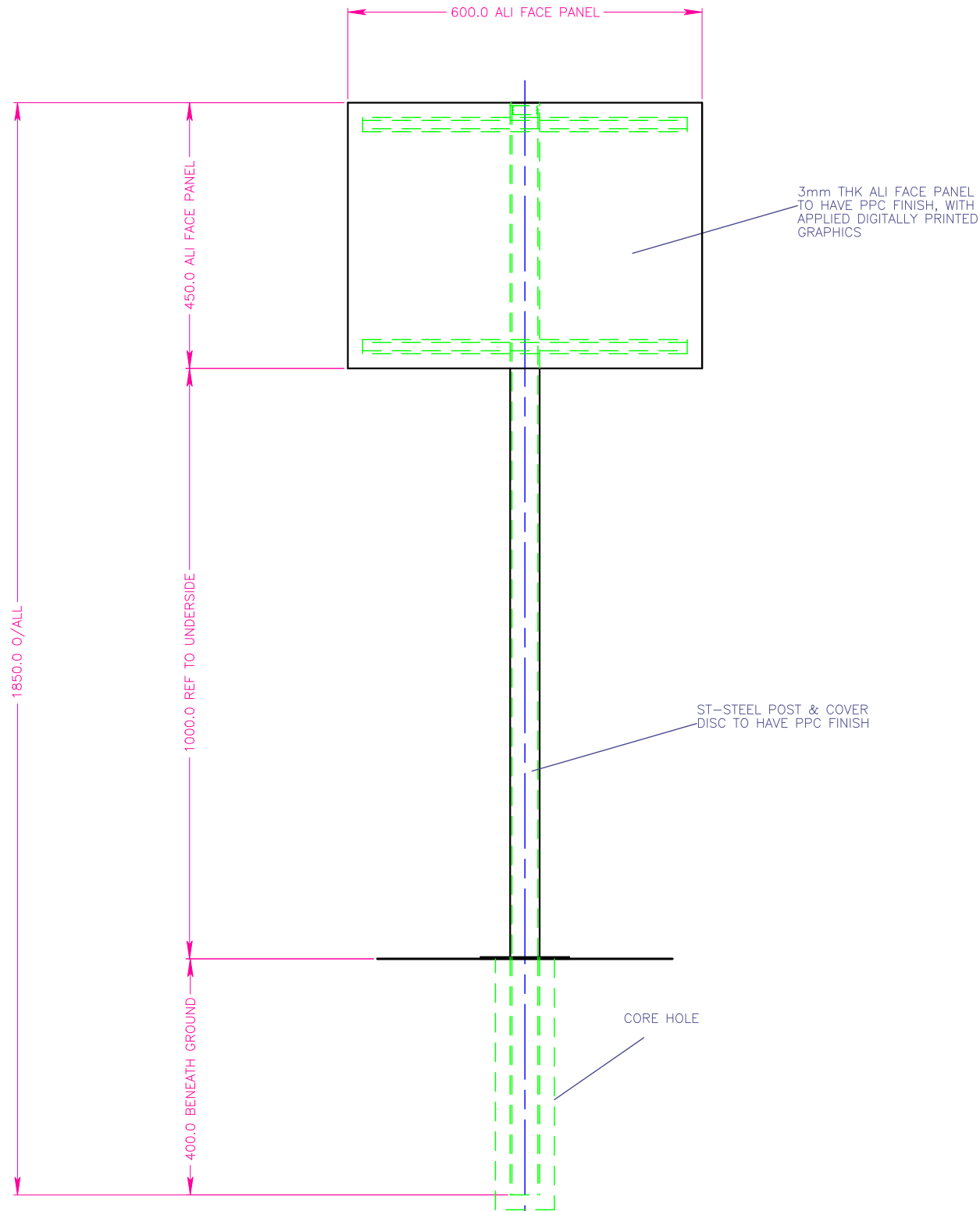
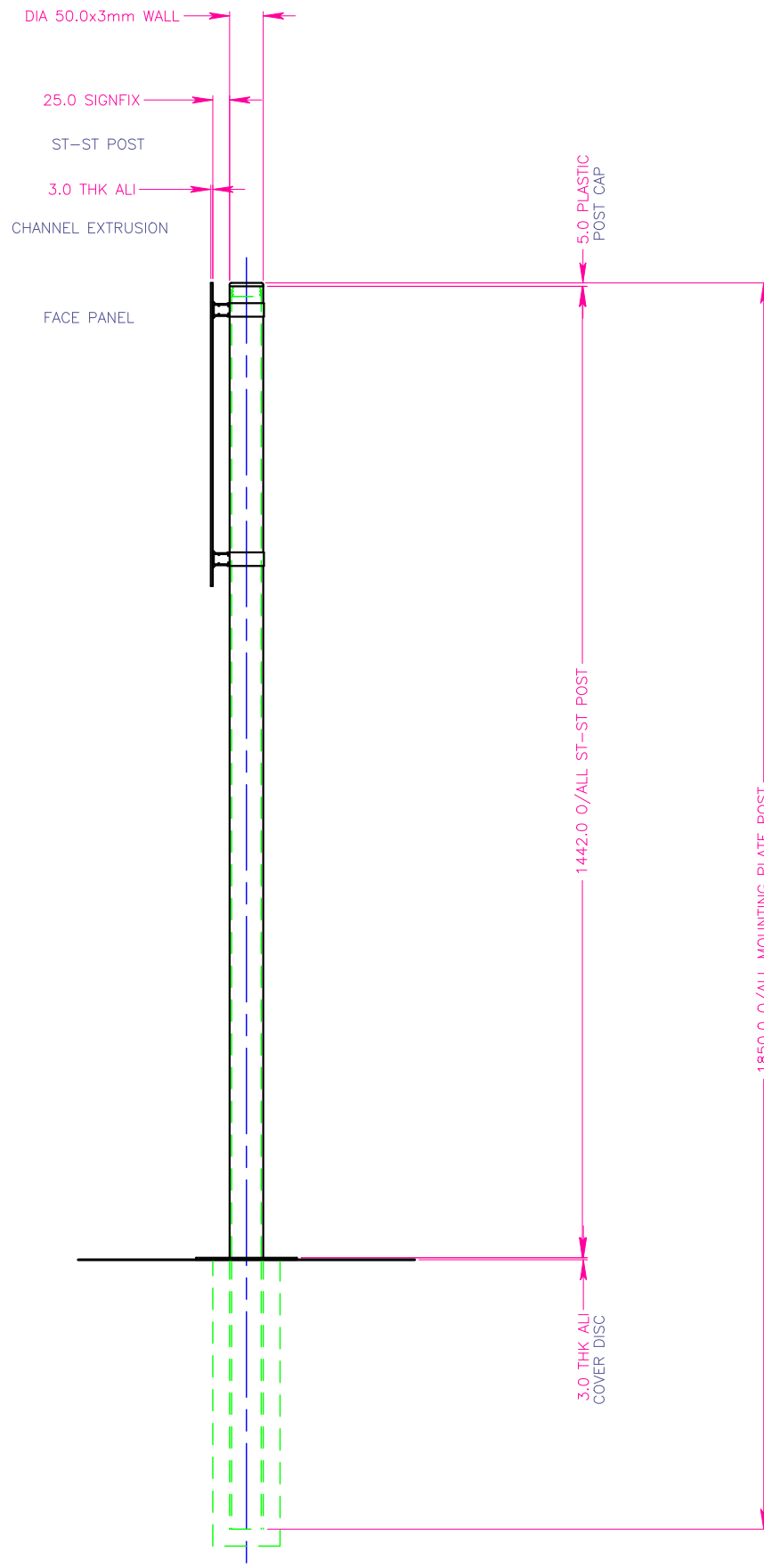
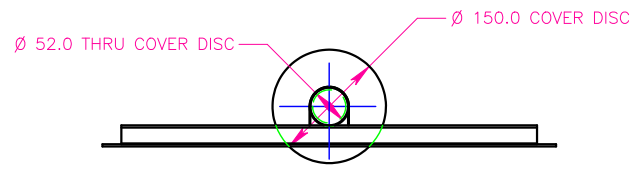
SCALE: 1:12.5	DRAWN BY: M.J.S	DATE: 28/03/2018
---------------	-----------------	------------------

WOOD & WOOD INTERNATIONAL SIGNS LTD
Horton Road
Boulton Estate
Exeter EX2 7LX
Tel: 01392 444881
Fax: 01392 252568

191717 - PAGE 1/3

THIRD ANGLE PROJECTION
DIMENSIONS IN MILLIMETRES

REV B:-
REMOVAL OF BASE PLATES
AND ADDITION OF
MOUNTING POST BEING
FIXED BY POSTCRETE.
EKP 30/05/18



CLIENT		
GREGGS		
DETAIL		
600x450mm POST SIGN		
ASSEMBLY / SITE		
ASHBY DE LA ZOUICHE		
MATERIAL		
SEE DRG		
SCALE	DRAWN BY	DATE
1 : 5	M.J.S	03/04/2018

DESIGN COPYRIGHT ©

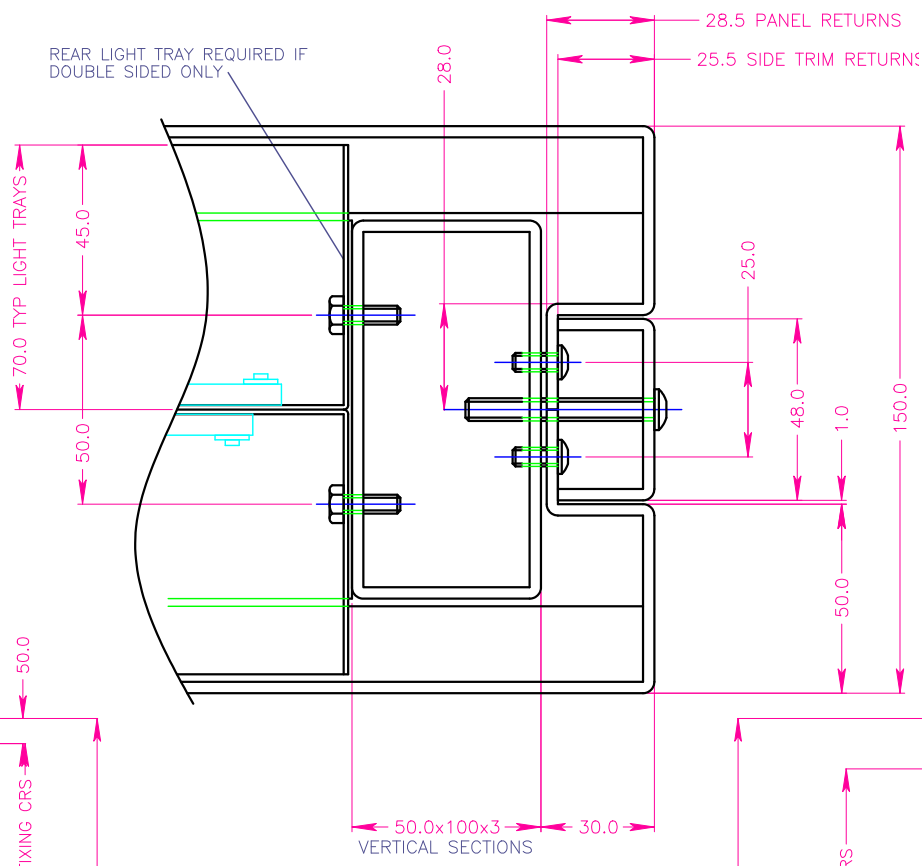
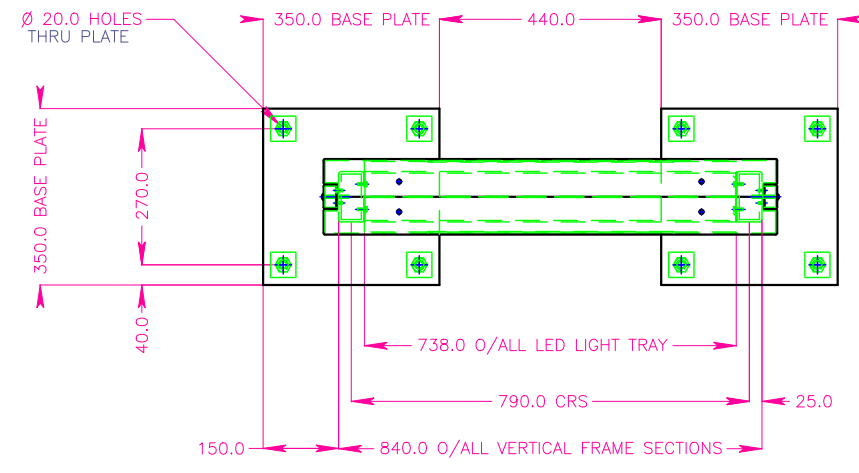
W

Wood & Wood International Signs Ltd
Heron Road
Sowton Estate
Exeter EX2 7LX
Tel: 01392 444501
Fax: 01392 252358

DRAWING APPROVAL STATUS	
STATUS A THIS DRAWING HAS BEEN CHECKED AND CONFORMS TO DESIGN INTENT	BY: MJS DATE: 03/04/18
STATUS B APPROVAL NOT REQUIRED	BY: MJS DATE: 03/04/18
STATUS C UNCHECKED, NOT TO BE USED FOR MANUFACTURE	

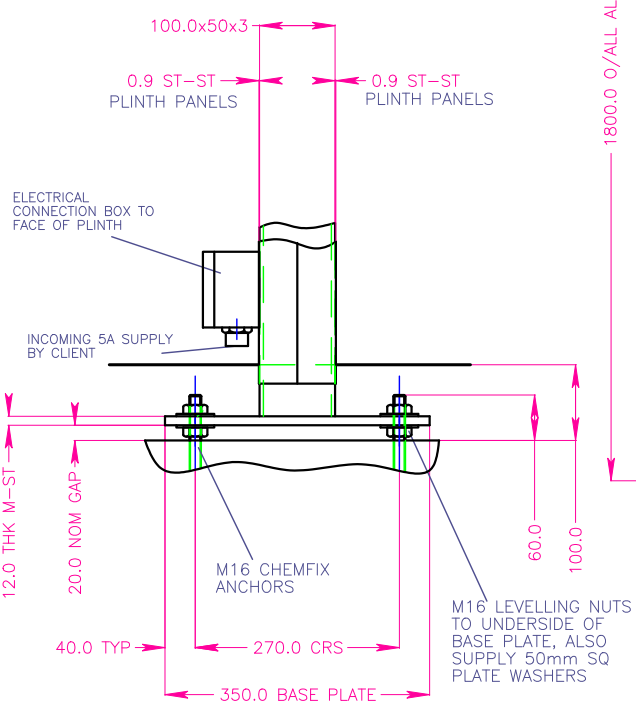
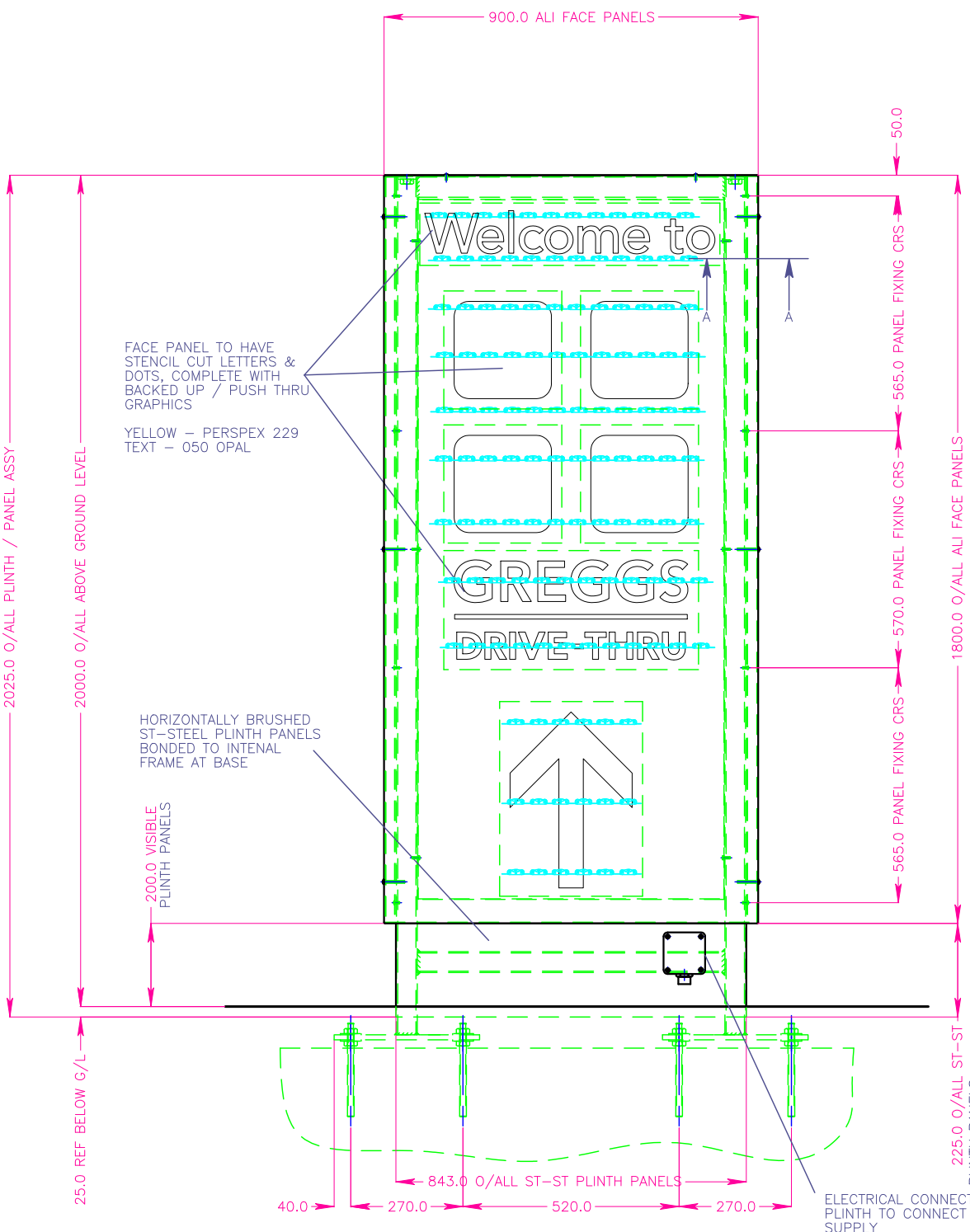
No part of this drawing & the design contained herein may be reproduced without the written consent of Wood & Wood International Signs Ltd	
DRAWING NO.	REV
19721	B

REV B
ARTWORK UPDATED PAGE
2 ADDED FOR PANEL
GRAPHICS
MJS 04/04/18
REV C
ELECTRICAL BOX ADDED
TO PLINTH
JAS 5-2-21
REV D
PAGE 2 ADDED WITH
FOUNDATION SIZES
MJS 18/03/21

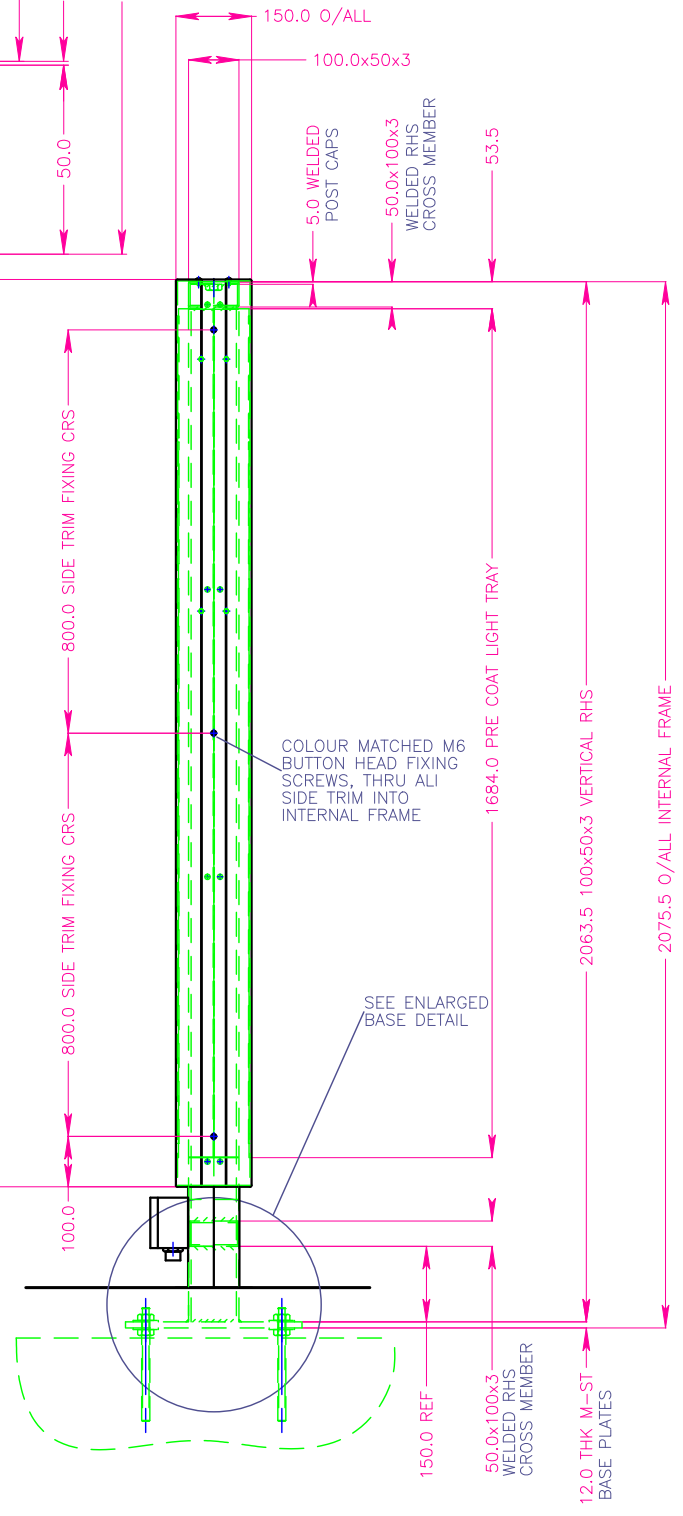


SECTION A-A
SCALE 1:1

NOTE:-
GRAPHICS SHOWN FOR DRAWING
PURPOSE ONLY SEE PAGE TO FOR
PANEL LAYOUTS



ENLARGED DETAIL
SCALE 1:5



COLOUR MATCHED M6
BUTTON HEAD FIXING
SCREWS, THRU ALI
SIDE TRIM INTO
INTERNAL FRAME

SEE ENLARGED
BASE DETAIL

DRAWING APPROVAL STATUS	
STATUS A	BY: [Signature]
THIS DRAWING HAS BEEN CHECKED AND CONFORMS TO DESIGN INTENT	
STATUS B	BY: [Signature]
APPROVAL NOT REQUIRED	
STATUS C	BY: [Signature]
UNCHECKED, NOT TO BE USED FOR MANUFACTURE	

CLIENT GREGGS		
DETAIL 2M TOTEM DETAILS		
ASSEMBLY / SITE .ASHBY DE LAZOUICHE		
MATERIAL SEE DRG		
SCALE 1 : 7.5	DRAWN BY M.J.S	DATE 03/04/2018
<p>Wood & Wood International Signs Ltd Heron Road Sowton Estate Exeter EX2 7LX Tel: 01392 444501 Fax: 01392 252358</p>		
DRAWING NO. 19729 - PAGE 1/2		REV D

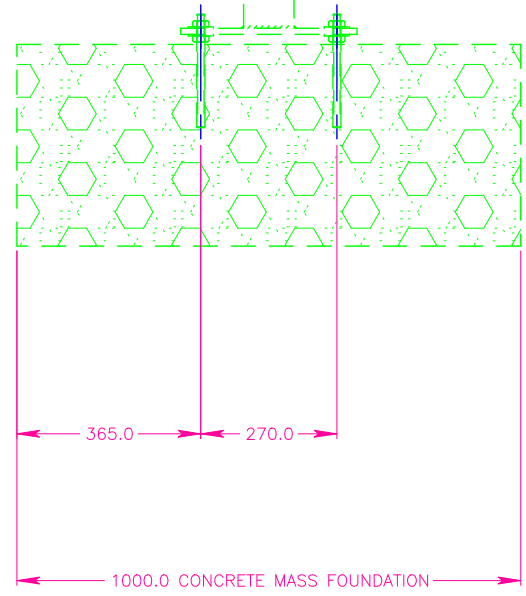
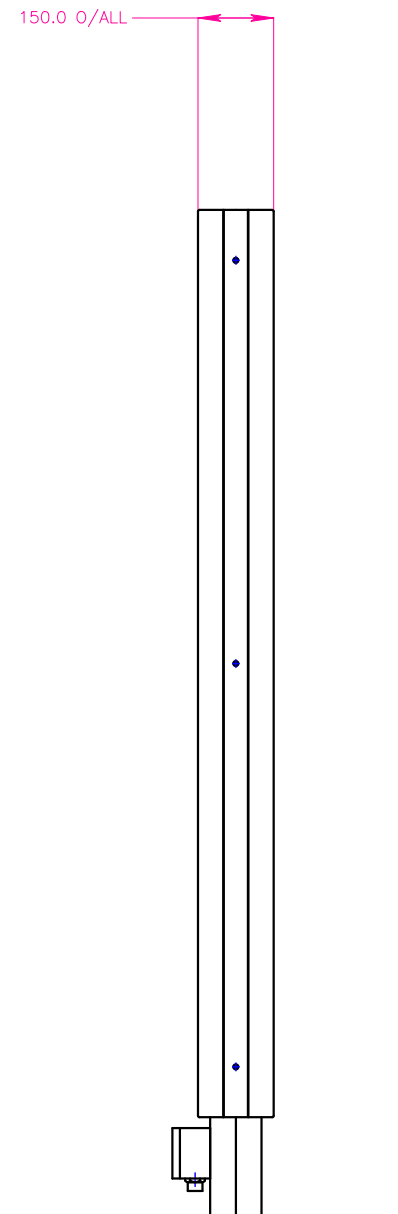
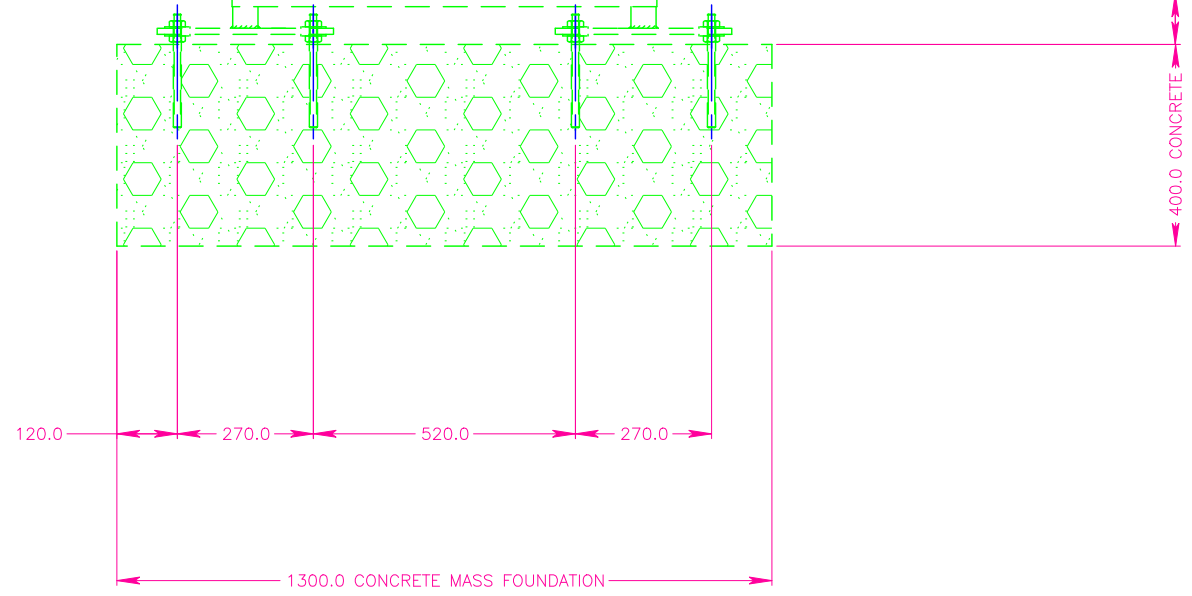
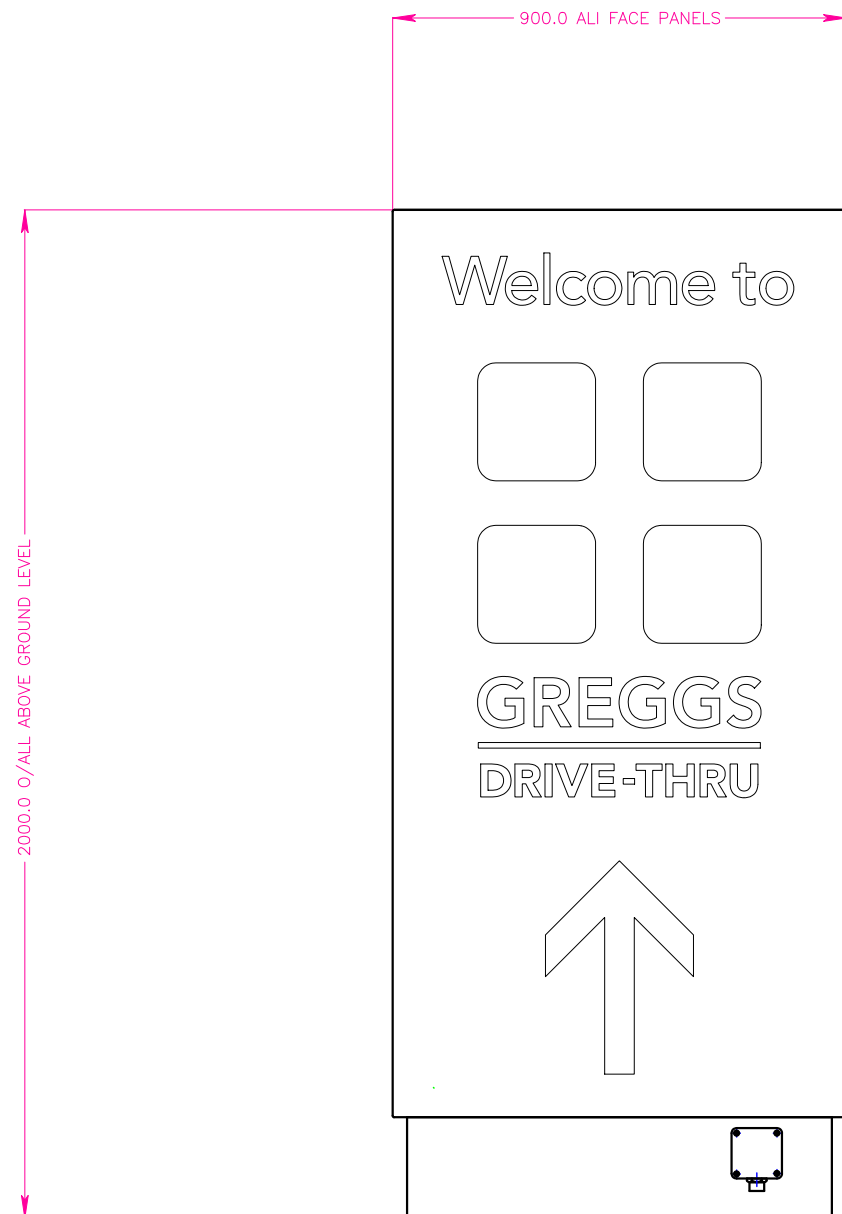
REV B
ARTWORK UPDATED PAGE
2 ADDED FOR PANEL
GRAPHICS
MJS 04/04/18
REV C
ELECTRICAL BOX ADDED
TO PLINTH
JAS 5-2-21
REV D
PAGE 2 ADDED WITH
FOUNDATION SIZES
MJS 18/03/21

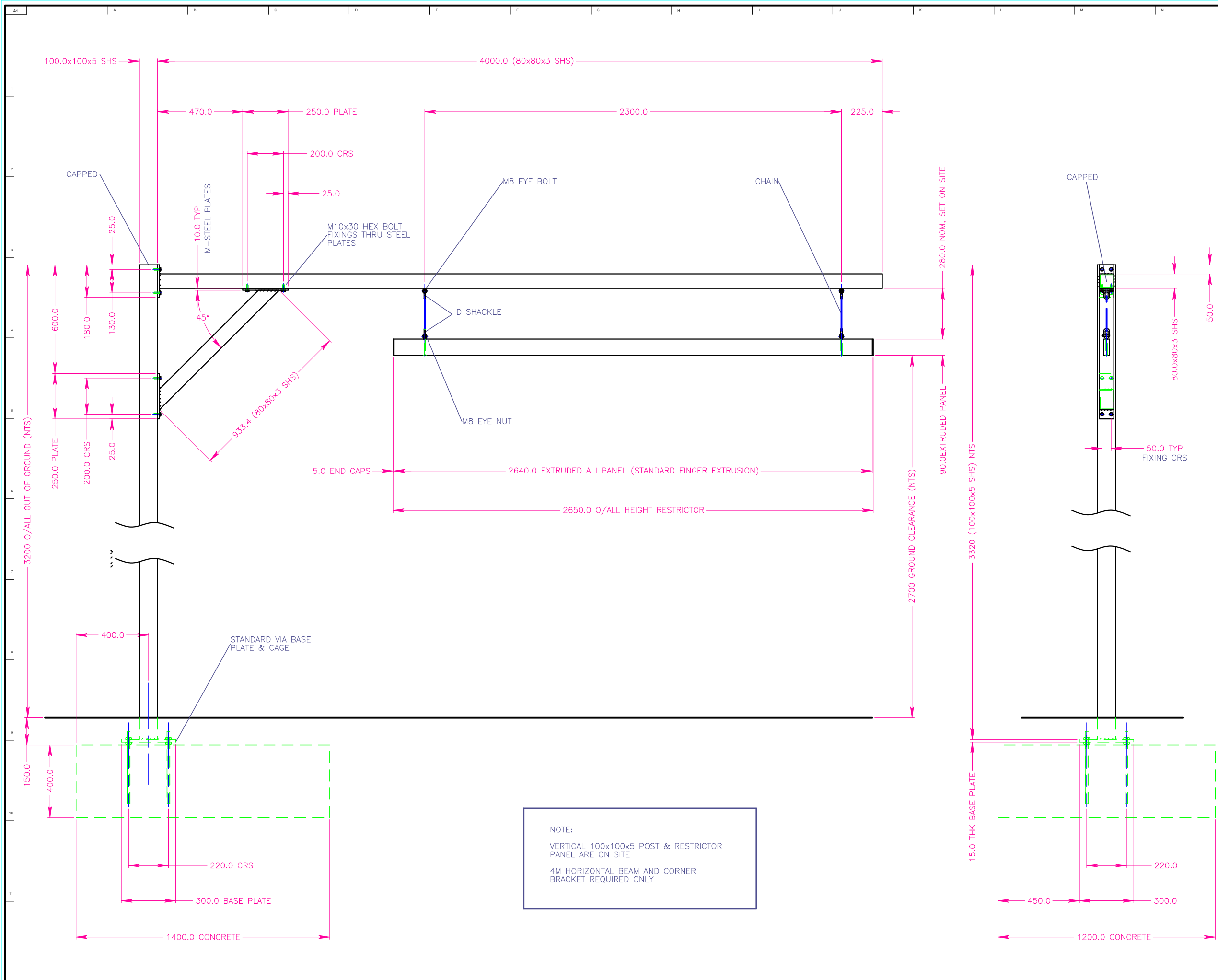
DRAWING APPROVAL STATUS		W
STATUS A THIS DRAWING HAS BEEN CHECKED AND CONFORMS TO DESIGN INTENT	BY DATE	
STATUS B APPROVAL NOT REQUIRED	BY DATE	
STATUS C UNCHECKED, NOT TO BE USED FOR MANUFACTURE	BY DATE	X

CLIENT GREGGS		
DETAIL 2M TOTEM DETAILS		
ASSEMBLY / SITE ASHBY DE LA ZOUCHE		
MATERIAL SEE DRG		
SCALE 1 : 7.5	DRAWN BY M.J.S	DATE 03/04/2018

Wood & Wood International Signs Ltd
Heron Road
Sowton Estate
Exeter EX2 7LX
Tel: 01392 444501
Fax: 01392 252358

DRAWING NO. 19729 - PAGE 2/2	REV D
---------------------------------	----------





NOTE:-
VERTICAL 100x100x5 POST & RESTRICTOR
PANEL ARE ON SITE
4M HORIZONTAL BEAM AND CORNER
BRACKET REQUIRED ONLY

DRAWING APPROVAL STATUS	
STATUS A	BY DATE
THIS DRAWING HAS BEEN CHECKED AND CONFORMS TO DESIGN INTENT	
STATUS B	BY DATE
APPROVAL NOT REQUIRED	
STATUS C	BY DATE
UNCHECKED, NOT TO BE USED FOR MANUFACTURE	

CLIENT
.GREGGS

DETAIL
HEIGHT RESTRICTOR PANEL

ASSEMBLY / SITE
NEWCASTLE DRIVE THRU

MATERIAL
SEE DRG

SCALE	DRAWN BY	DATE
1:10	M.J.S	28/06/2019



Wood & Wood International Signs Ltd
Heron Road
Sowton Estate
Exeter EX2 7LX
Tel: 01392 444501
Fax: 01392 252358

No part of this drawing & the design contained herein may be reproduced without the written consent of Wood & Wood International Signs Ltd

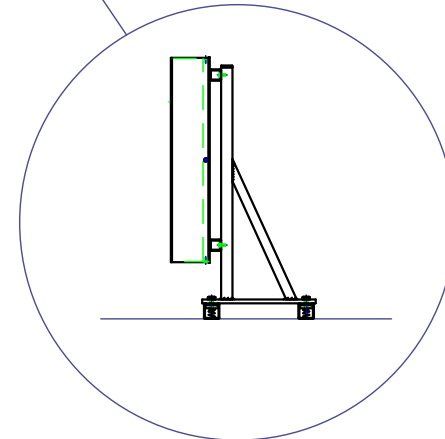
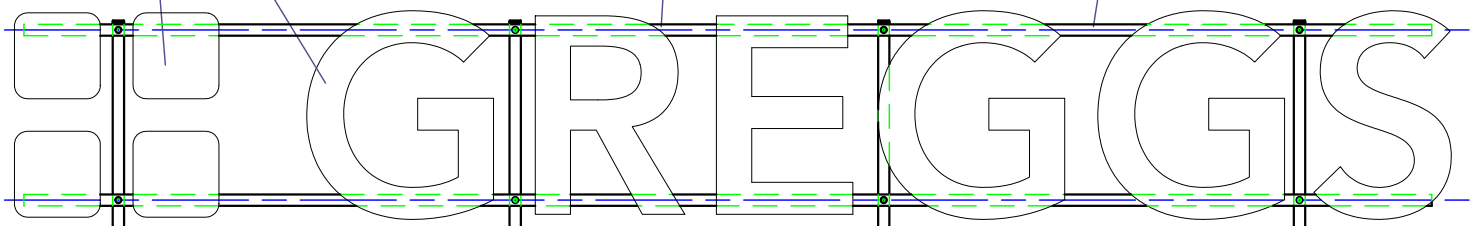
DRAWING NO.	REV
21471	A

INDIVIDUAL BUILT UP RIMLESS LETTERS & BUNS WITH INTERNAL LED'S PROVIDING FACE ILLUMINATION,

LOW VOLTAGE POWER CABLE TO LOOP WITHIN HORIZONTAL FIXING RAILS

30x30x3 HORIZONTAL ALI FIXING RAILS WELDED TO ALUMINIUM LETTER BACKS, PAINTED GREY FINISH

SEE ENLARGED DETAILS



30x30x3 STAINLESS STEEL BOX SECTION FIXING BRACKETS WELDED TO BASE PLATE, FIXED TO TOP OF UNISTRUT RAILS, PAINTED GREY FINISH

P1000T UNISTRUT PROVIDED BY SITE CONTRACTOR

133.0 O/ALL LETTER & FIXING RAILS

30.0x30x3 ST-STEEL SHS

100.0 BUILT UP LETTERS

SUPPORT FRAME BY WOOD & WOOD, PPC GREY FINISH

150.0 TYP GAP TO TOP OF CANOPY

SITE SPECIFIC CAP HEIGHTS

10.0 THK ST-STEEL BASE PLATE

SITE SPECIFIC STAINLESS STEEL FRAME

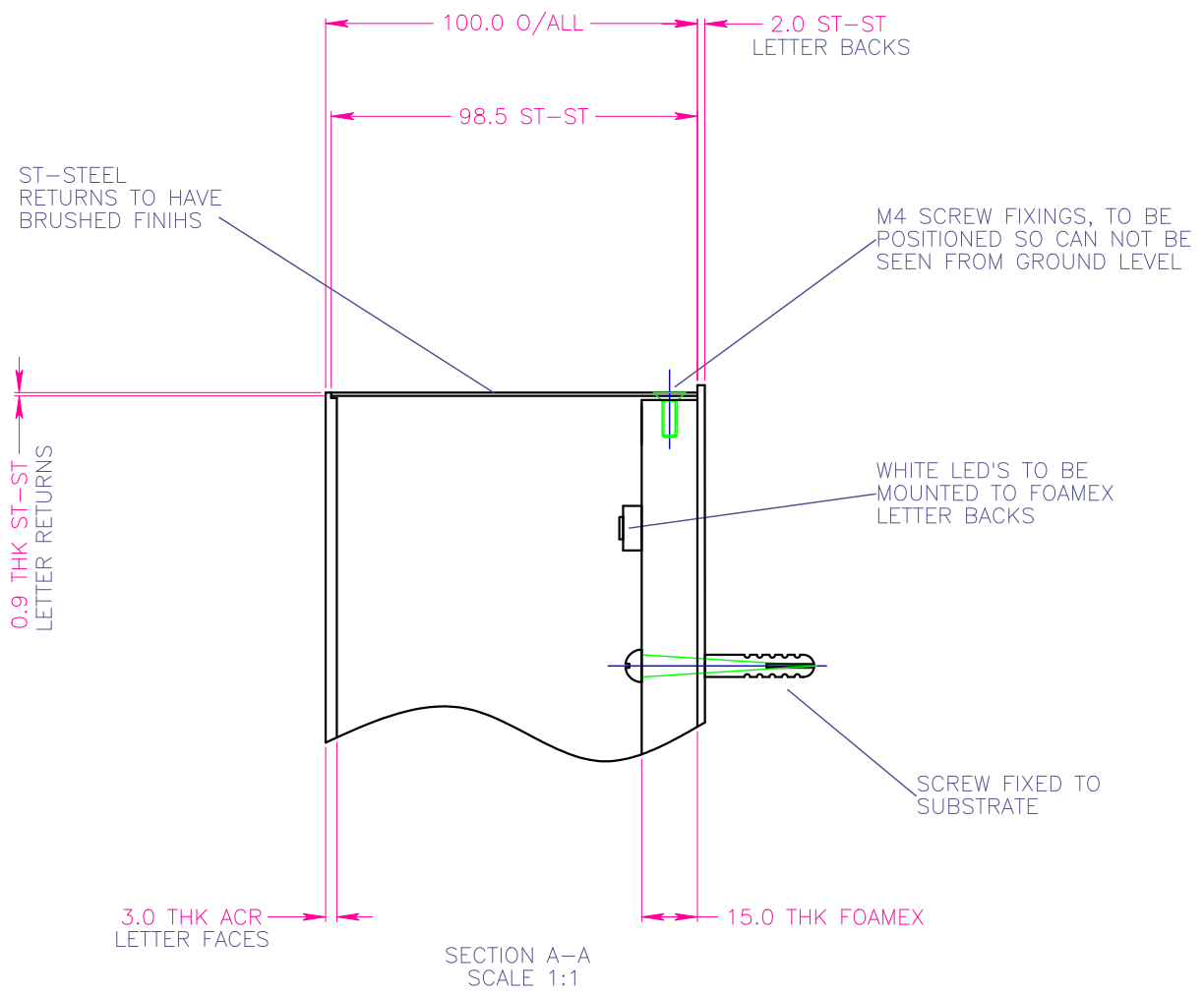
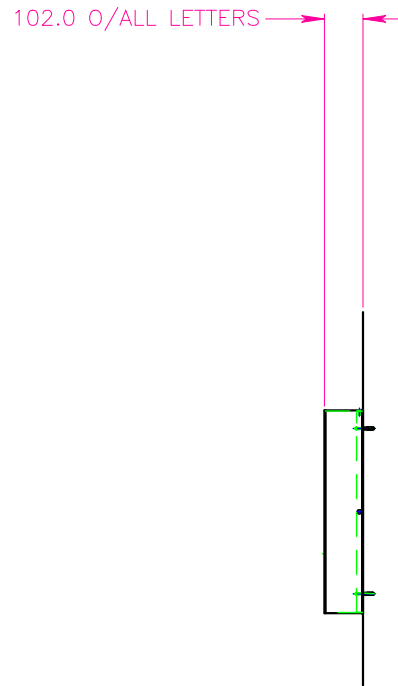
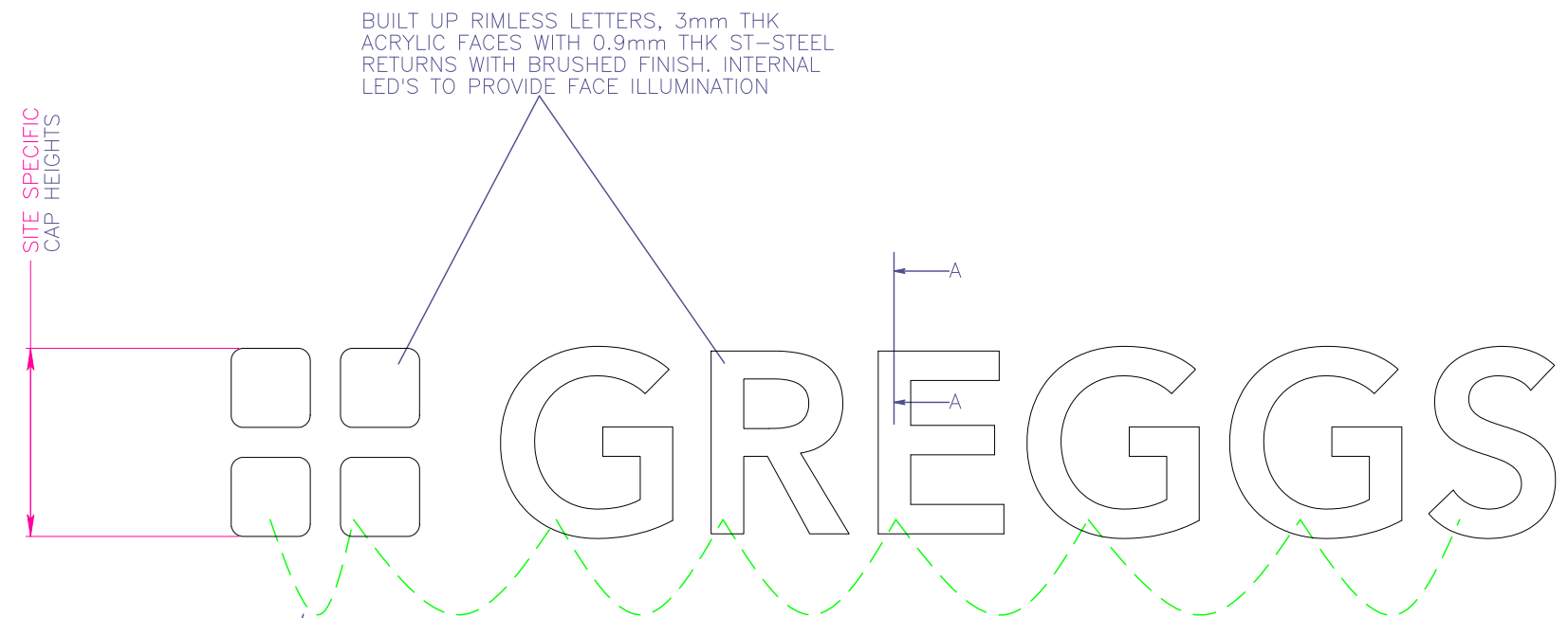
41.0 P1000T UNISTRUT

25.0
250.0 CRS
300.0

2x LENGTHS OF UNISTRUT FIXED TO TOP OF CANOPY STRUCTURE BY OTHERS

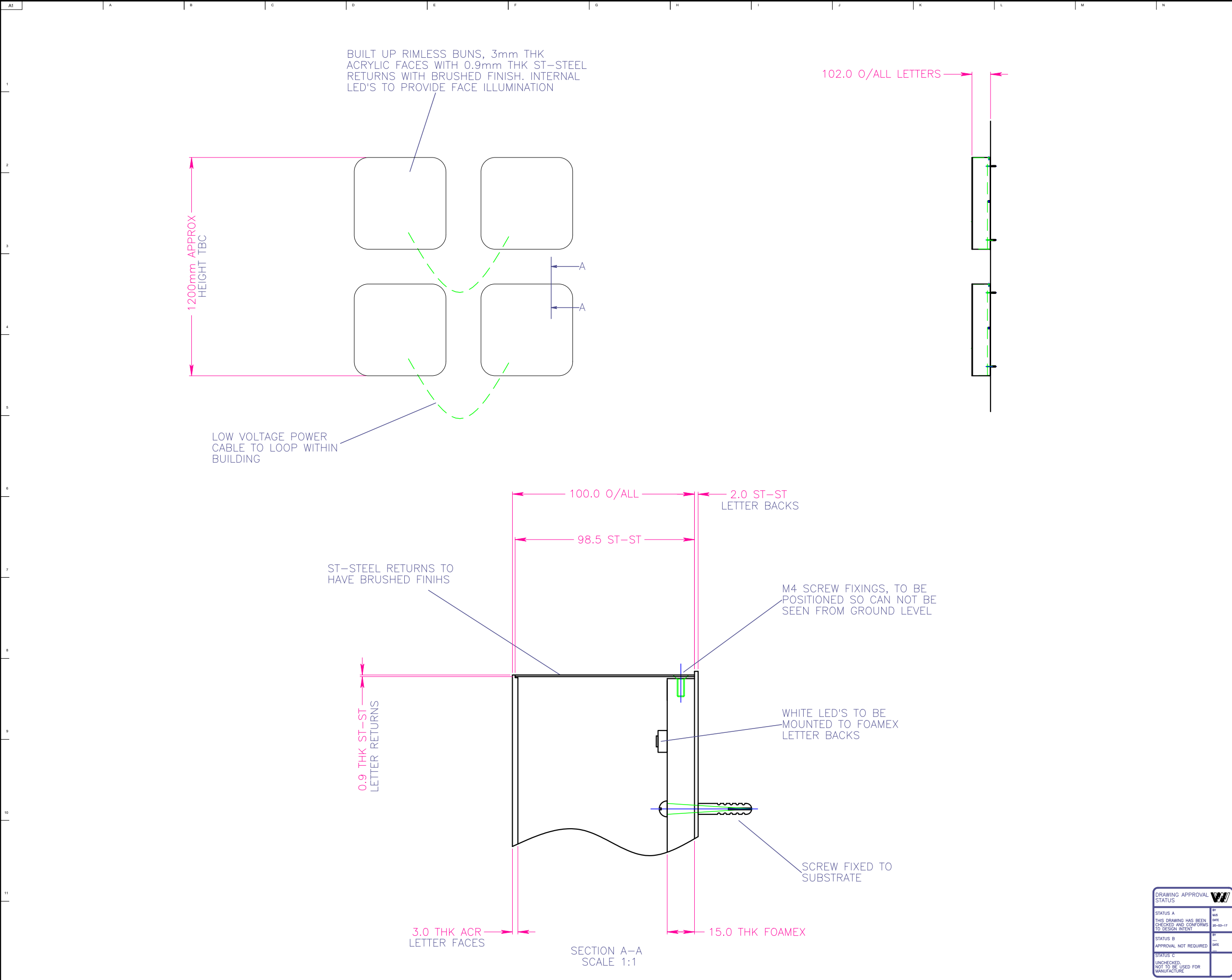
CLIENT GREGGS		
DETAIL DRIVE THRU CANOPY LETTERS		
ASSEMBLY / SITE N/A		
MATERIAL SEE DRG		
SCALE 1 : 10	DRAWN BY M.J.S	DATE 26/02/2021
<p>Wood & Wood International Signs Ltd Heron Road Sowton Estate Exeter EX2 7LX Tel: 01392 444501 Fax: 01392 252358</p>		
<p>No part of this drawing & the design contained herein may be reproduced without the written consent of Wood & Wood International Signs Ltd</p>		
DRAWING NO. 23065	REV A	

DRAWING APPROVAL STATUS	BY	DATE
STATUS A THIS DRAWING HAS BEEN CHECKED AND CONFORMS TO DESIGN INTENT	---	---
STATUS B APPROVAL NOT REQUIRED	---	---
STATUS C UNCHECKED, NOT TO BE USED FOR MANUFACTURE	X	---



CLIENT		
GREGGS		
DETAIL		
WALL FIXED ILLUMINATED LETTERS		
ASSEMBLY / SITE		
N/A		
MATERIAL		
SEE DRG		
SCALE	DRAWN BY	DATE
1 : 10	M.J.S	26/02/2021
<p>Wood & Wood International Signs Ltd Heron Road Sowton Estate Exeter EX2 7LX Tel: 01392 444501 Fax: 01392 252358</p>		
<small>No part of this drawing & the design contained herein may be reproduced without the written consent of Wood & Wood International Signs Ltd</small>		
DRAWING NO.	REV	
23066	A	

DRAWING APPROVAL STATUS	
STATUS A	BY: MJS DATE: 26-02-17
THIS DRAWING HAS BEEN CHECKED AND CONFORMS TO DESIGN INTENT	
STATUS B	BY: DATE:
APPROVAL NOT REQUIRED	
STATUS C	BY: DATE:
UNCHECKED, NOT TO BE USED FOR MANUFACTURE	



BUILT UP RIMLESS BUNS, 3mm THK ACRYLIC FACES WITH 0.9mm THK ST-STEEL RETURNS WITH BRUSHED FINISH. INTERNAL LED'S TO PROVIDE FACE ILLUMINATION

1200mm APPROX HEIGHT TBC

LOW VOLTAGE POWER CABLE TO LOOP WITHIN BUILDING

102.0 O/ALL LETTERS

ST-STEEL RETURNS TO HAVE BRUSHED FINIHS

M4 SCREW FIXINGS, TO BE POSITIONED SO CAN NOT BE SEEN FROM GROUND LEVEL

WHITE LED'S TO BE MOUNTED TO FOAMEX LETTER BACKS

SCREW FIXED TO SUBSTRATE

0.9 THK ST-STEEL LETTER RETURNS

3.0 THK ACR LETTER FACES

15.0 THK FOAMEX

SECTION A-A SCALE 1:1

THIRD ANGLE PROJECTION DIMENSIONS IN MILLIMETRES

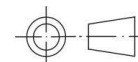
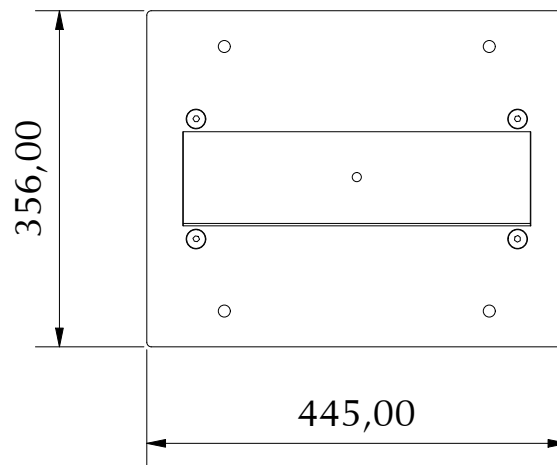
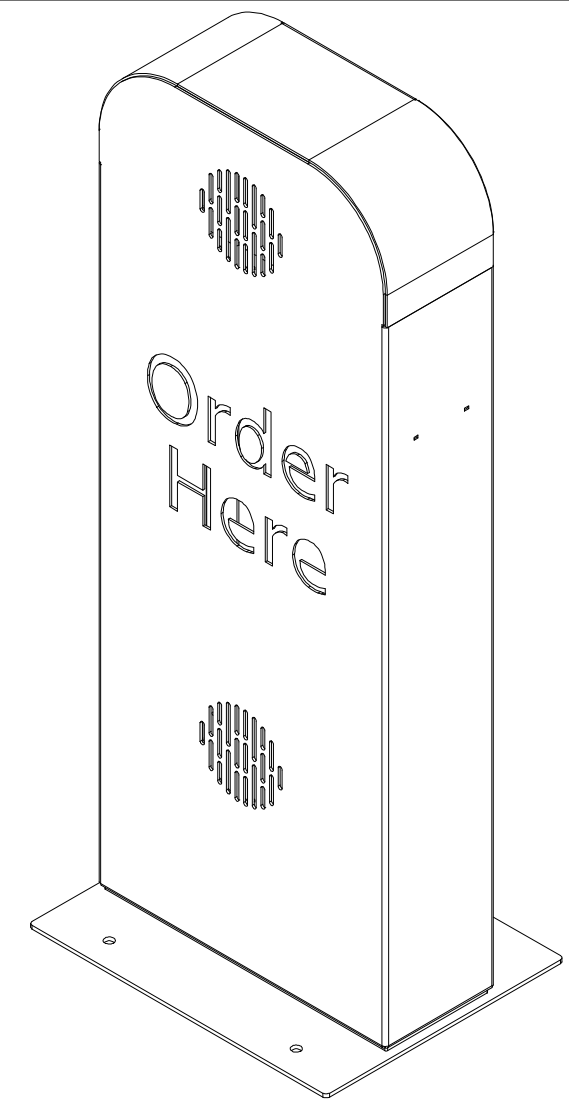
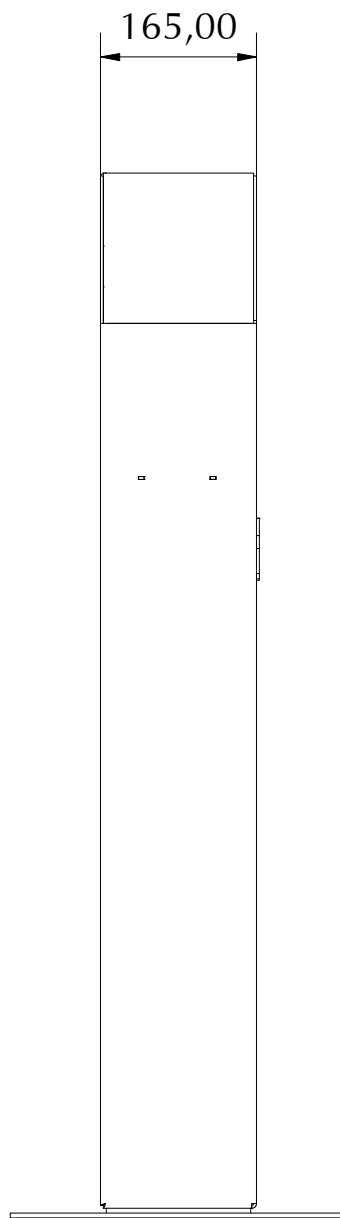
CLIENT	GREGGS	
DETAIL	WALL FIXED ILLUMINATED BUNS	
ASSEMBLY / SITE	N/A	
MATERIAL	SEE DRG	
SCALE	DRAWN BY	DATE
1 : 10	M.J.S	26/02/2021

Wood & Wood International Signs Ltd
 Heron Road
 Sowton Estate
 Exeter EX2 7LX
 Tel: 01392 444501
 Fax: 01392 252358

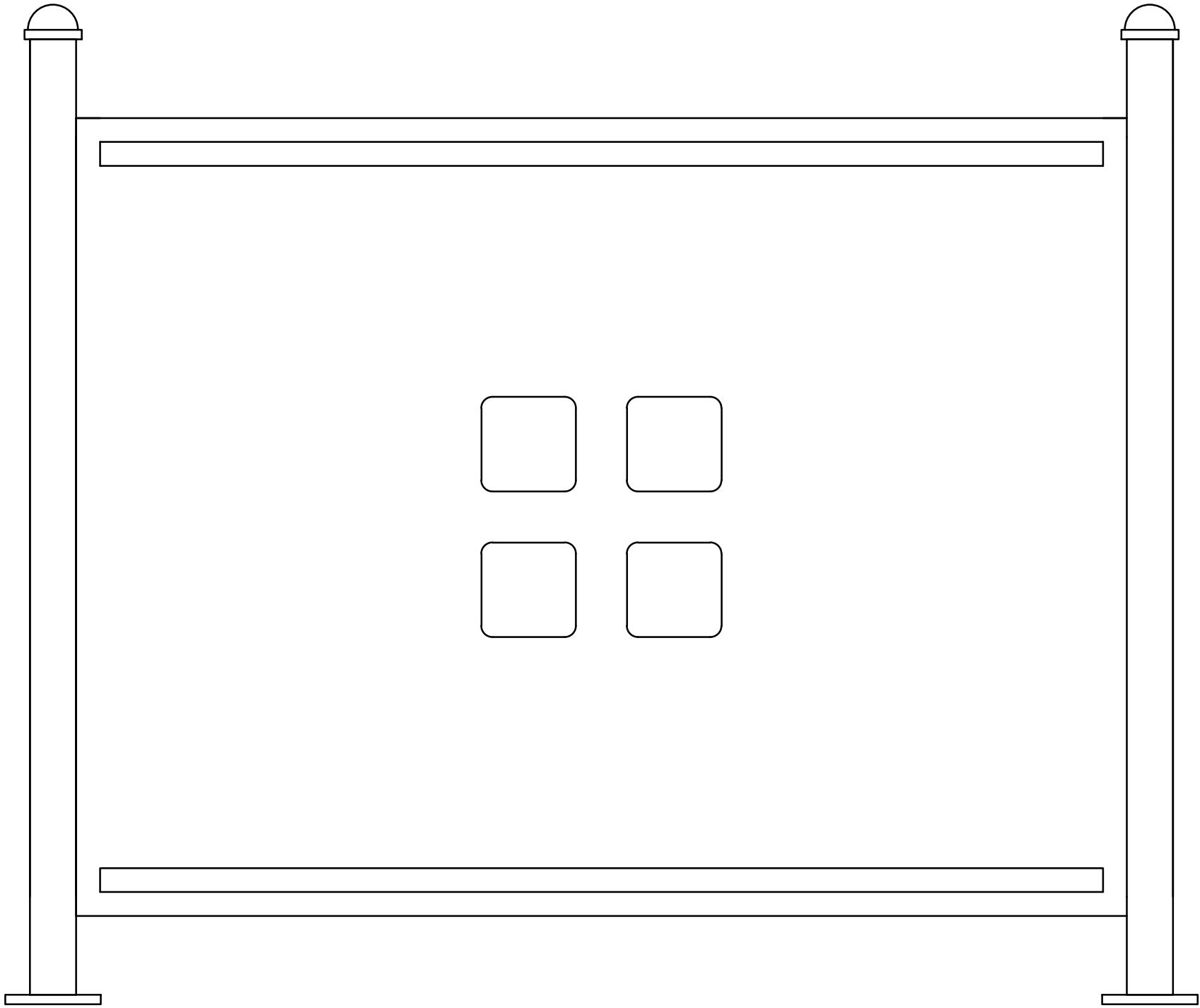
No part of this drawing & the design contained herein may be reproduced without the written consent of Wood & Wood International Signs Ltd

DRAWING APPROVAL STATUS	BY	DATE
STATUS A THIS DRAWING HAS BEEN CHECKED AND CONFORMS TO DESIGN INTENT	MJS	26-02-17
STATUS B APPROVAL NOT REQUIRED	---	---
STATUS C UNCHECKED, NOT TO BE USED FOR MANUFACTURE	---	---

DRAWING NO.	REV
23067	A



LS Fabrications Making it better Precision Sheet Metal Specialists email : sales@lsfabrications.com website : www.lsfabrications.com tel : 01707 885885	PART NO : 53858ASS	
	THICKNESS:	
	MATERIAL :	1



Poseidon Tensile Umbrella



Poseidon Tensile Umbrella

Shades of Comfort are proud to have produced the first and only central mast tensile umbrella in the United Kingdom to be certified for snow loading and wind bearing capabilities, The Poseidon is:

- 100% UK designed
- 100% UK built
- Project brief was to make an umbrella so suitable for the extremes of weather we experience in the UK, even atop Ben Nevis!
- Maintenance free, fit and forget solution
- Withstand wind strengths of up to Gale Force 10
- 10 year framework guarantee
- 5 year membrane guarantee

The Poseidon	Traditional Giant Umbrellas
Cover- made from a coated high quality PVC and is totally water resistant. Our Poseidon covers are certified to cope with wet/windy conditions and are backed by an unrivalled 5 year guarantee.	Cover- constructed from a fabric weave coated to increase water repellency. Life expectancy largely dependent on wind conditions where placed. In particularly windy or coastal areas it may even be less than a year.
Framework- The powder coated, galvanized steel, framework of --The Poseidon comes with a 10 year guarantee and has a mast size of 114mm as standard.	Framework- Offered without guarantee, the framework of the majority of most traditional giant umbrellas on the market are available with a mast diameter of around 80mm and bigger sizes at an increased cost.
Maintenance- Virtually none.	Maintenance- A number of moving parts will need to be maintained.
Operation- Once installed The Poseidon is designed simply to stay up. No staff intervention necessary.	Operation- Traditional umbrellas are lifted and lowered using a hand crank or pulley system. These require staff to raise them when need and remember to take them down when windy.
Weather- Our Poseidon umbrella has been designed to withstand the particular climate of the United Kingdom and is the first and only tensile umbrella to have certified snow, wind and rain capabilities to prove it.	Weather- Fabric covers are designed for continental Europe, which typically is not as exposed to the wind as the UK. Consequently, when introduced to our weather they are tested beyond what they are designed to withstand.

Poseidon Tensile Umbrella

Installation options

The Poseidon can be installed into the ground using our specially designed in-ground sleeve system. The in-ground sleeve offers a great degree of stability. If electrical options (e.g. heating and Lighting) are also selected when purchased, The Poseidon will come with cabling internally running through the umbrella's mast. This not only looks great but reduces trip hazards posed by exposed wires.

Canopy Info

The canopy that sits atop The Poseidon canopy consists of high tensile PVC which has been specially coated to suit the range of weather conditions we encounter in the UK. The Poseidon is the only tensile umbrella in the United Kingdom to be certified for snow loading and wind bearing capabilities. It is flame retardant, UV resistant and is virtually maintenance free. The canopy is available in a range of Poseidon colour options. Our canopies are backed by an unbeatable UK-wide 5 year warranty.

Electrical Options

The Poseidon has been designed to be able to host electrical heating and lighting options. Customers are able to order electrical items with their umbrella or have electric heaters and lights fitted retrospectively to Poseidon that have already been installed.

Lighting- Is umbrella mounted and comes in a hardwearing and attractive, powder coated tube (standard colour is white but other colours can be provided for an additional cost). We offer both traditional Fluorescent Lights and energy efficient LED lights.

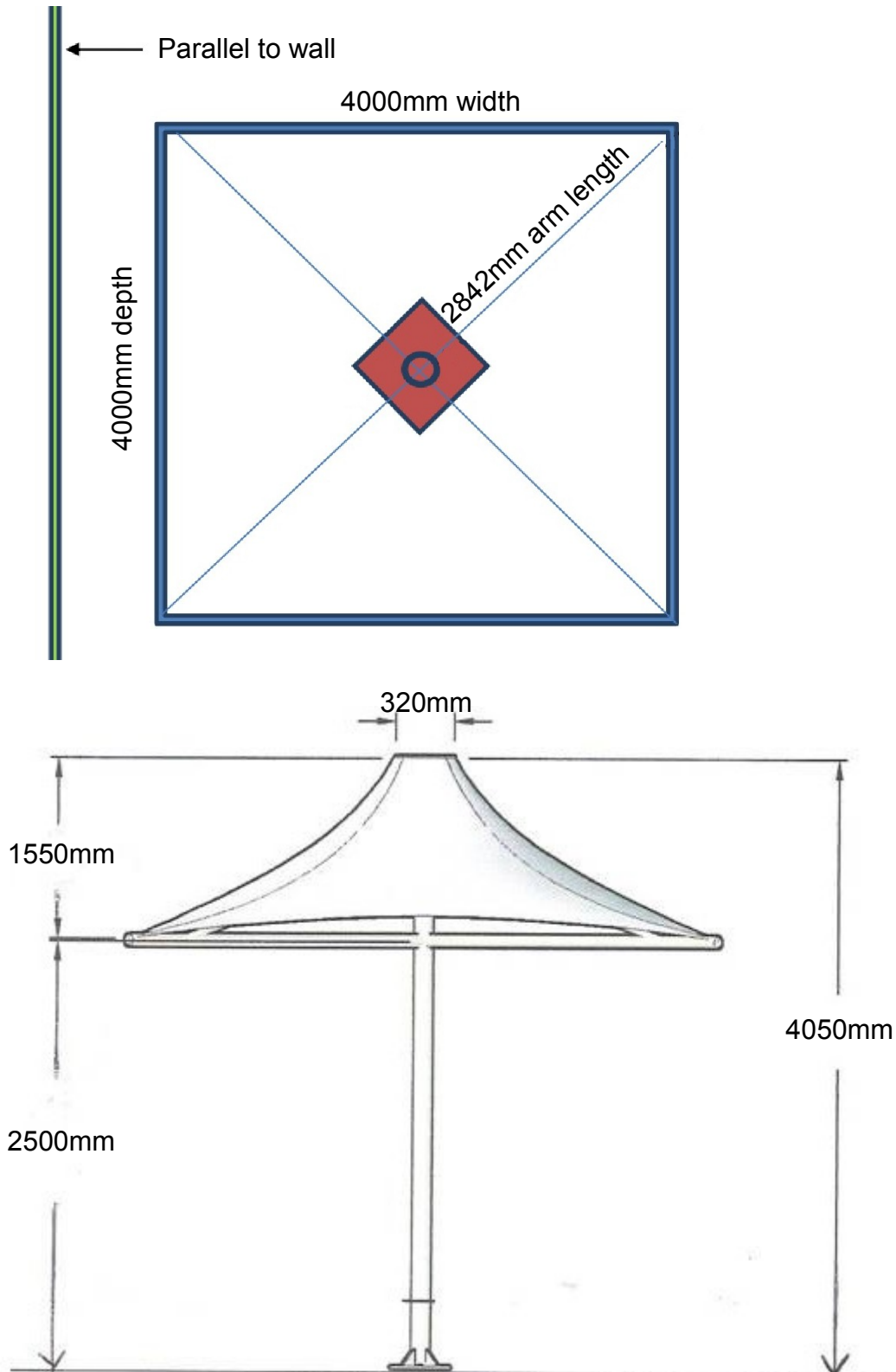
Heating- Making for a more comfortable customer experience all year round, our 1.5KW infra red heaters are designed to be outdoors. All of our heaters come with a safety guard to protect your customers and can be wired to a timed control switch if requested.

Print work

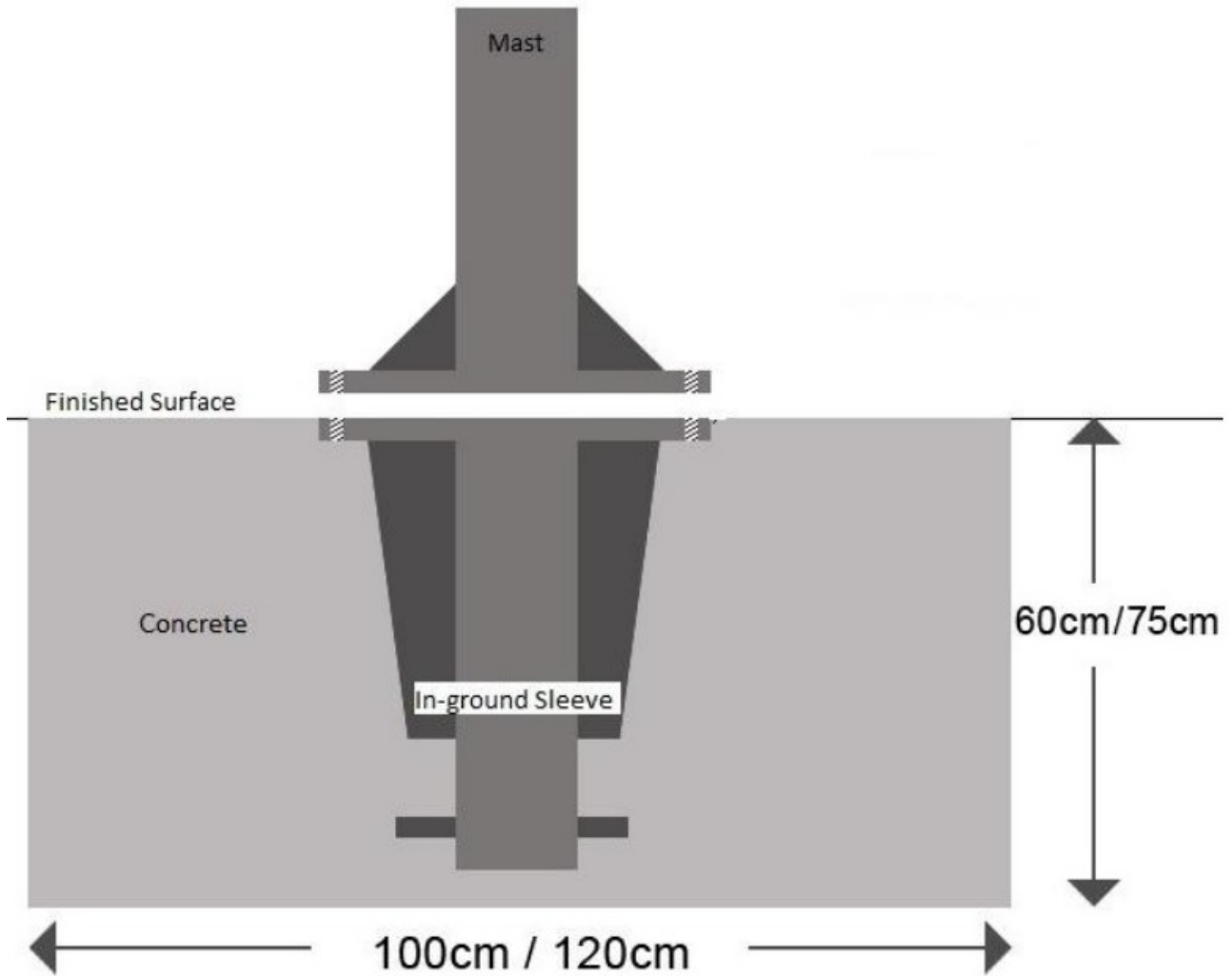
Epitomising form and function, The Poseidon can be printed to provide coverage and signage simultaneously. We can provide text, logos or both if needed. This is a great way to add to the visibility of your brand. Contact us today to further discuss your specific requirements.

Poseidon Tensile Umbrella

The in-ground sleeve must be in a diamond position so the umbrella cover is parallel to the building/structure. The sleeve can be positioned between ground level and 100mm deep. This MUST NOT be exceeded under any circumstances.



Poseidon In-Ground Sleeve Foundations



For 2 or more Poseidons, there must be a minimum distance of 4300mm from centre to centre.

