

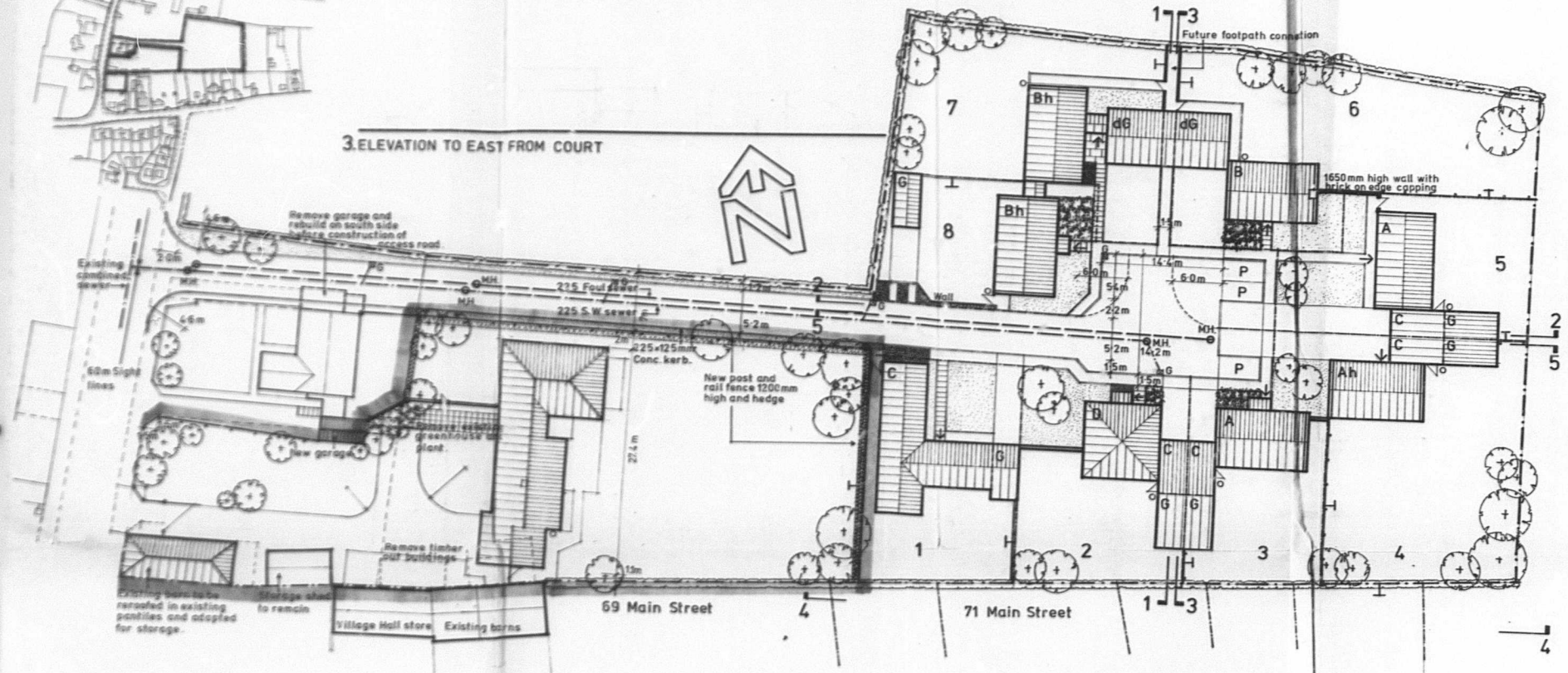
LOCATION PLAN 1:2500

ALTERNATIVE 'A'

1. ELEVATION TO WEST FROM COURT

2. ELEVATION TO NORTH FROM COURT

3. ELEVATION TO EAST FROM COURT

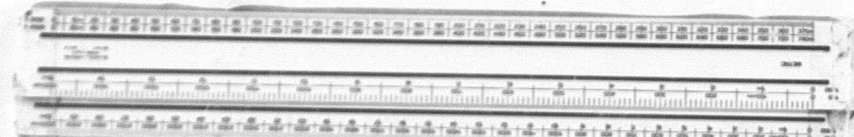


KEY

- Existing hedge
- New hedge
- Close boarded pressure creosoted fence on conc. posts 1650 mm high
- Facing brick wall with brick on edge capping and tile creasing 1650 mm high
- P Visitors Parking
- Grassed areas

4. ELEVATION TO NORTH FROM EXISTING PROPERTY

5. ELEVATION TO SOUTH FROM COURT



Proposed housing, College St,
East Bridgford, Nottingham.
for Mr. and Mrs. D. J. Smith.

Architects and Surveyors
Cecil Howitt and Partners

Saint Andrew's House, Mansfield Road, Nottingham

modifications		
scale: 1:250	date: 1.3.76	mod.
project: N1300	dwg. no. 03	
tele. no.: Nottingham 65052		