

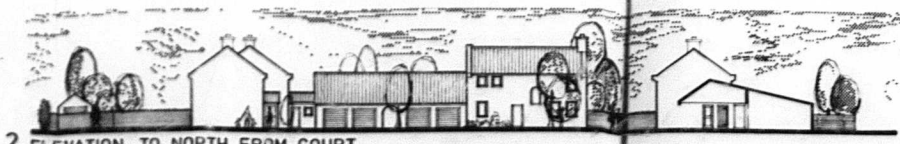
8/11/78/0/119.

ALTERNATIVE "B"

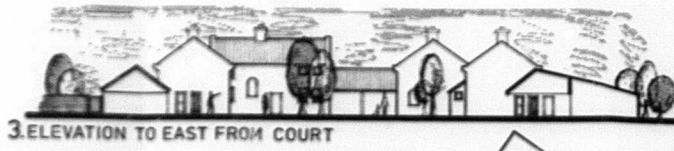
LOCATION PLAN 1:2500



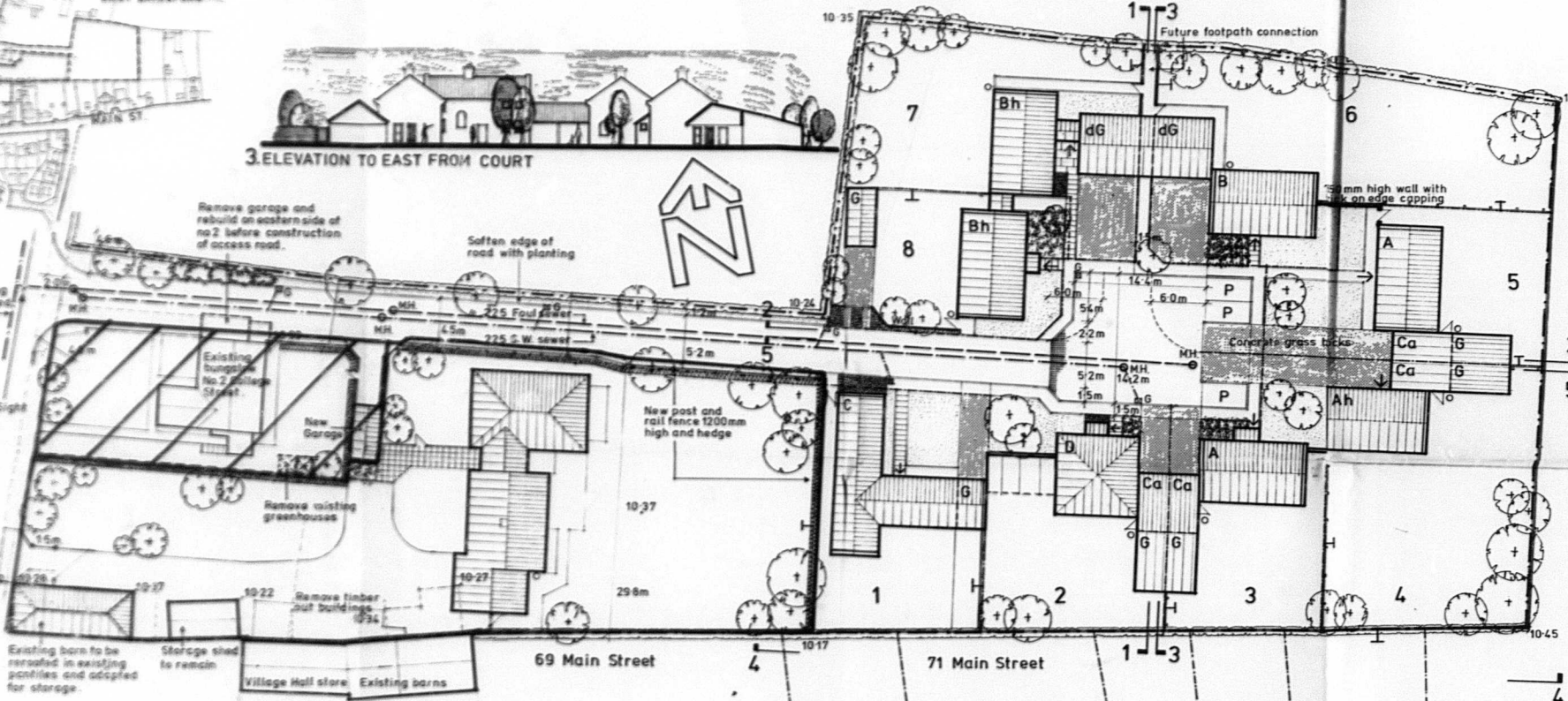
1. ELEVATION TO WEST FROM COURT



2. ELEVATION TO NORTH FROM COURT



3. ELEVATION TO EAST FROM COURT



KEY

- Existing hedge
- New hedge
- Close boarded pressure creosoted fence on conc. posts 1650 mm high
- Facing brick wall with brick on edge capping and tile creasing 1650 mm high
- Visitors Parking
- Grassed areas
- A B C D** House types
- Ah Bh** House types handed
- Ca** Car port
- G** Garage
- dG** Double garage
- Boundary

MATERIALS :-

- Walls - Old English Red Brick by Birtley Brick Co.
- Roofs - Clay Pantiles by Gox Hill Tileries

Alternative B.



4. ELEVATION TO NORTH FROM EXISTING PROPERTY



5. ELEVATION TO SOUTH FROM COURT

8/11/78/0/119

Proposed housing, College St, East Bridgford, Nottingham, for Mr. and Mrs. D. J. Smith.

Architects and Surveyors
Cecil Howitt and Partners

Saint Andrews House, Mansfield Road, Nottingham

project	date	mod.
N 1300	1.3.78	0
dwg. no.	03	0
telephone	Nottingham 65052	