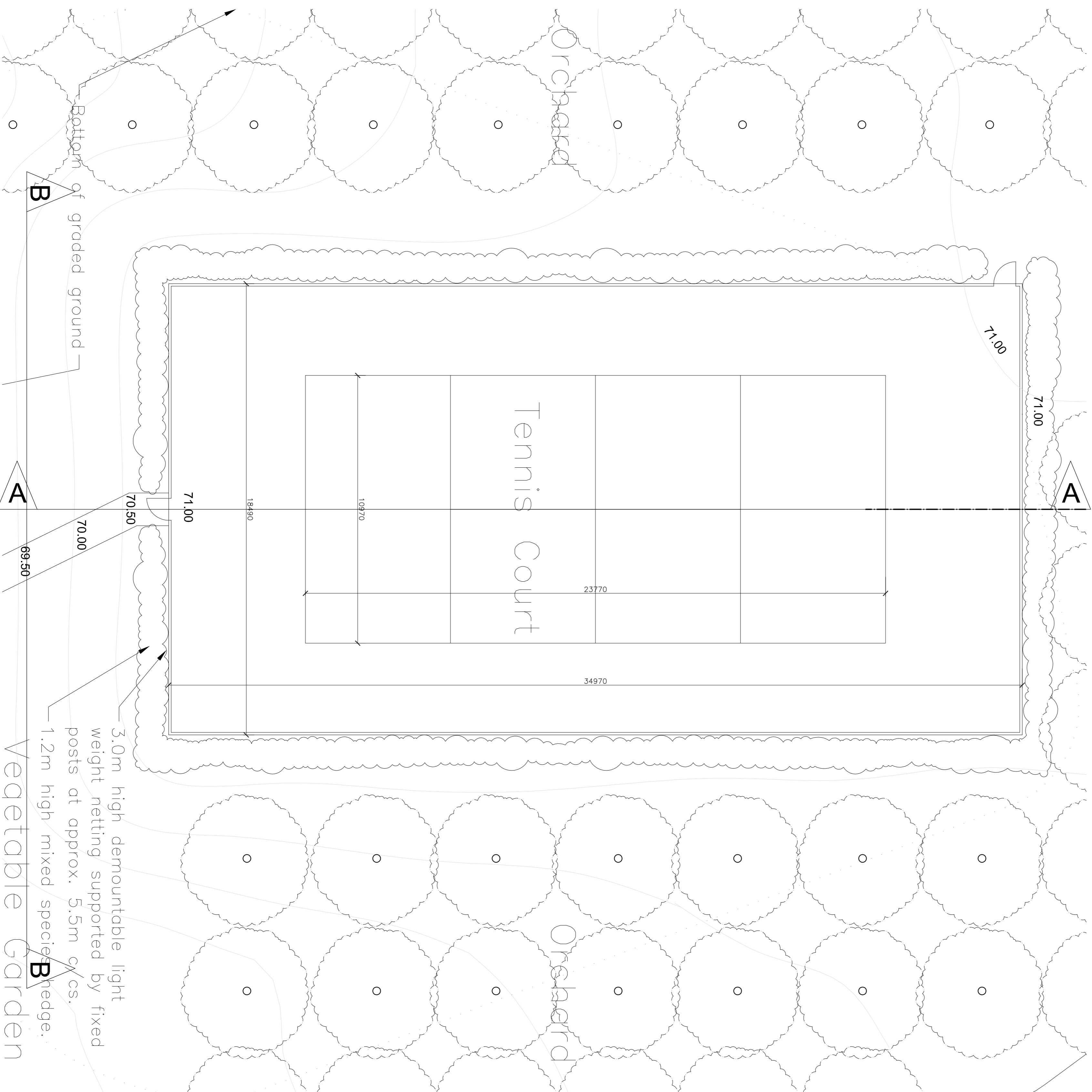


3.0m high demountable light weight netting supported by pulleys to top of posts at approx. 5.5m c/c/s.
1.2m high mixed species hedge.

Track

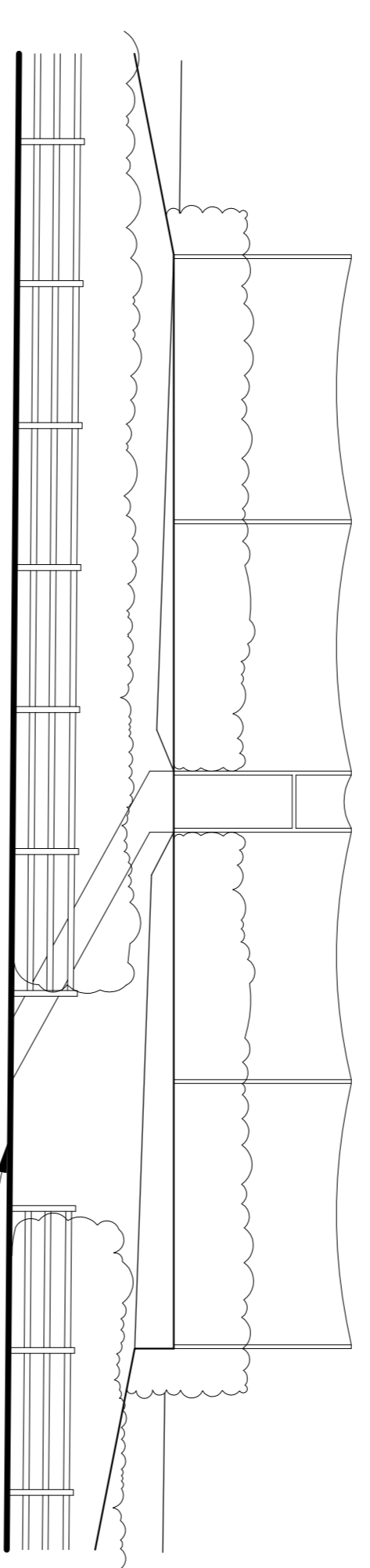
Section A-A

Existing ground level



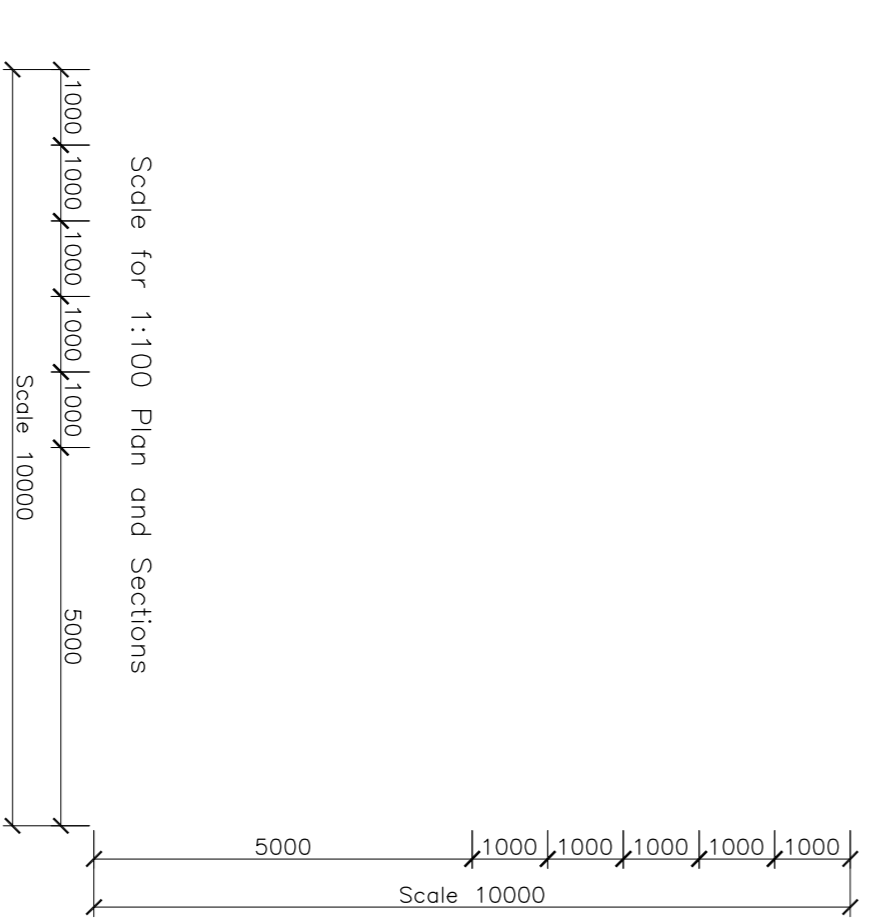
3.0m high demountable light weight netting supported by fixed posts at approx. 5.5m c/c/s.
1.2m high mixed species hedge.

Vegetable Garden



Section B-B

Existing track



Revisions



Adrian Mitchell Tel: 01992 553552 email: cruxarch@aol.com
Cruxarch Limited, 50 West Street, Herford, Herts. SG13 8EZ

Project		Proposed Tennis Court at The Old Coach House, Rickney's Farm, Wadesmill Road, Chapmore End, Herts. SG12 0GB.	
Drawing Title		Proposed Plan and Sections.	
Number		2042	
Revision		P10	
Date	Scale	Drawn	Checked
08/04/21	1:100 @ A1	KGM	