



Disclaimer
 1. Do not scale except for planning. Use figured dimensions only. When a scale bar is provided it is for use by the local planning authority solely for the purposes of the planning application to which it relates.
 2. Report all drawing errors, omissions and discrepancies to the Architect.
 3. All dimensions are to be checked on site by the contractor and such dimensions shall be the contractor's responsibility.
 4. This drawing must only be used for the purpose for which it is supplied and its contents must not be reproduced for any purpose without written permission.
 5. No areas indicated, or areas calculated from this drawing should be used for valuation purposes or as the basis for development contracts.
 © All copyrights Coffey Architects.

Revision

REV	DATE	DESCRIPTION

Notes
 Construction Design and Management (CDM) Regulations 2015
 • Under CDM regulations a number of residual risks have been identified that will require management throughout the operation phases.
 • Where relevant, the below symbol has been added to areas which have been identified. The noted risks are indicative and do not cover every single instance of every risk.

Residual Risks

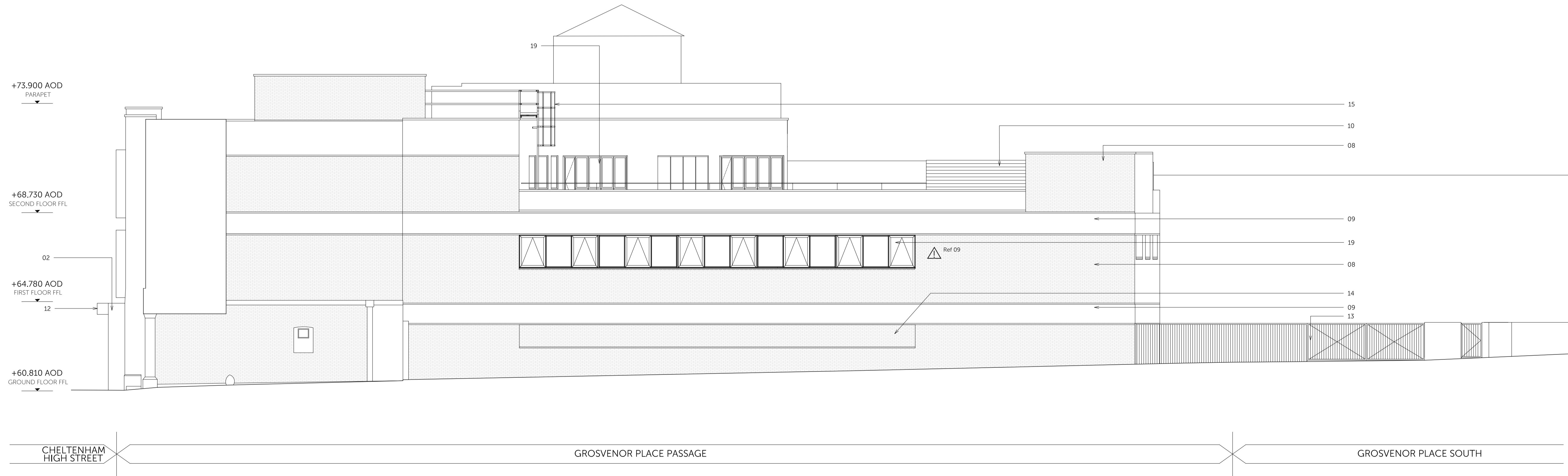
Ref	Description
Ref D1	Existing gate and association with John Lewis fire escape route.
Ref D2	Consideration of segregation of service yard subject to use and pedestrian route.
Ref D3	Non-slip decking to be maintained in accordance with product requirements.
Ref D4	Change in level to be safely managed in advance of tenant installed steps / ramp.
Ref D5	All handrails and safety guards are to be a minimum 1000mm from FFL.
Ref D6	Refer to MEP plant replacement and maintenance strategy.
Ref D7	Reduced head height, below 2m, at door opening.
Ref D8	Working outside safe zone not permitted. If work outside of safe protected area required this should be carried out under separate method statement.
Ref D9	All windows to be cleaned from safe reach and wash pole under a safe method statement.

LEGEND

- EXISTING BATH STONE REPAIRED AND CLEANED
- ALUMINIUM CLADDING - PPC DARK GREY
- ALUMINIUM GLAZED WINDOW - PPC DARK GREY
- ALUMINIUM FRAMED GLAZED ORIEL - PPC DARK GREY SURROUND TO GLAZING
- ALUMINIUM GLAZED DOOR - PPC DARK GREY
- STEEL DOOR - PPC DARK GREY
- EXISTING GATE PAINTED - PPC GREY
- PAINT FINISH TO EXISTING BRICKWORK - DARK GREY
- PAINT FINISH TO EXISTING CONCRETE BAND - DARK GREY
- METAL LOUVRE - PPC DARK GREY
- SUSPENDED METAL SIGNAGE BY TENANT
- PROJECTING METAL SIGNAGE BY TENANT
- METAL FENCE AND GATES - GALVANISED STEEL FINISH
- BRICK INFILL PAINTED TO MATCH ADJACENT BRICKWORK
- STEEL ACCESS LADDER - PPC DARK GREY
- SAFETY RAILING - STAINLESS STEEL FINISH
- PAINT FINISH TO EXISTING BRICKWORK - PPC DARK GREY
- ALUMINIUM CURTAIN WALL GLAZING - PPC DARK GREY
- ALUMINIUM CURTAIN WALL GLAZING - PPC DARK GREY



1 SOUTHWEST ELEVATION



2 SOUTHEAST ELEVATION

COFFEY / ARCHITECTS
 11-12 Great Sutton Street, London, EC1V 0BX / +44 (0)20 7549 2141
 www.coffeyarchitects.com

Project Name 109-117 HIGH STREET CHELTENHAM	Project No. 1067
Drawing Name SOUTHWEST AND SOUTHEAST ELEVATIONS	
Status FINAL ISSUE	
Drawn	Checked
Scale Sheet 1:100 A1	
Drawing No. 1067(00)301	Revision No.