

SUPPORTING STATEMENT

PROPOSED ENTRANCE ALTERATIONS AND MEETING HUB.

TOLL COMMUNITY CENTRE BURNTISLAND KY3 9HA



BACKGROUND

The application relates to the provision of a new building adjacent to the gated side entrance of the Toll Community Centre to provide sheltered access and additional meeting space for the building and Playgroup. The Toll Community Centre and Burntisland Playgroup have identified an additional requirement for this space due to the need to provide increased childcare provision as part of the Scottish Government's policy in this respect.

The current side entrance is poorly appointed with dull and tired walls and gates leading to the side garden of the Toll Community Centre and the main access to the Hall for the Playgroup. The Playgroup currently access via this entrance to allow the main entrance to be used for wider Toll Community Centre activities. There is no shelter, or area before entering the main hall to stop with a buggy or pram, space for shoes, coats or boots on rainy days.

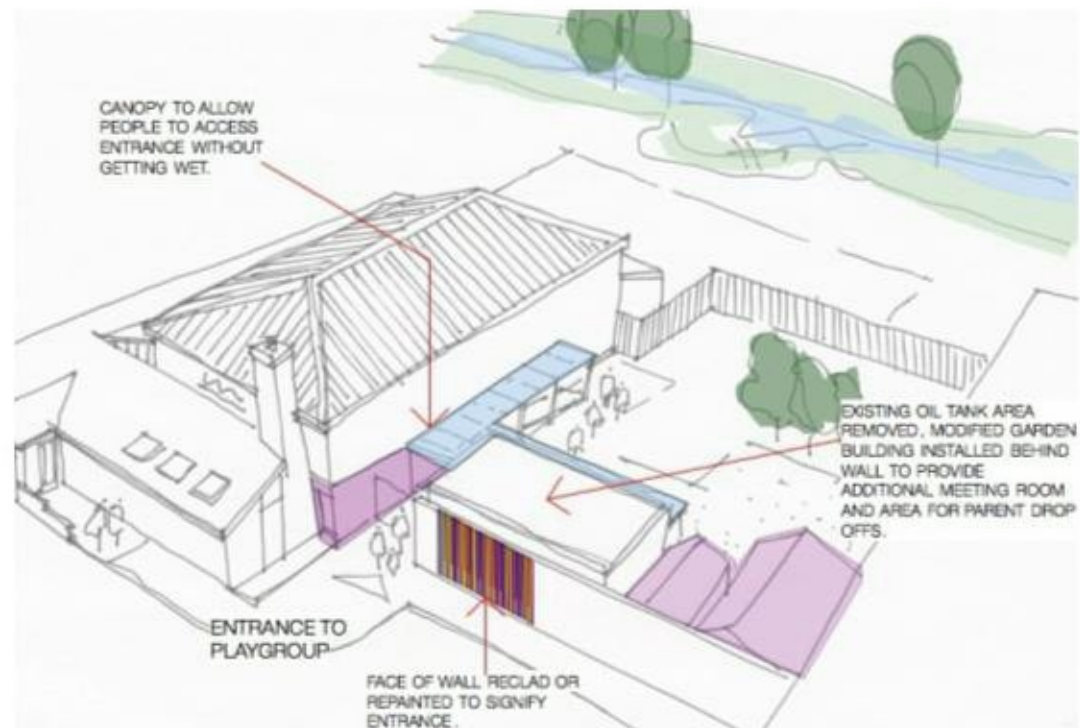
signal architects

2 SHORE ROAD ABERDOUR KY3 0TR

t. 01383 860941

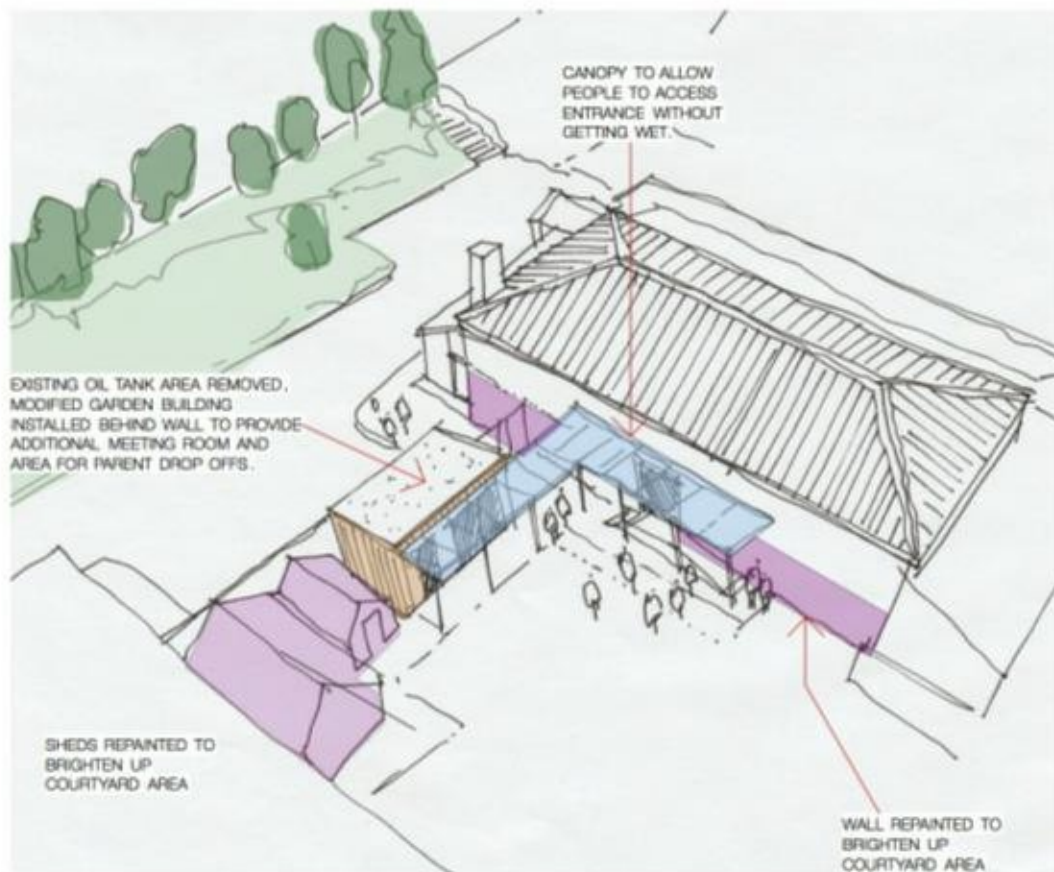
e. info@signalarchitects.com

PROPOSAL



Signal Architects were approached to provide some initial feasibility studies for the project and some wider issues and then went on to test ideas around the entrance. There is a redundant bundled oil tank enclosure adjacent the entrance and initially ideas were explored to convert this into a shelter for parents dropping off children. After a review it was felt that the demolition of the tank enclosure and the provision of a small repurposed 'garden building' might be more cost effective and provide a quality space for a limited budget.

This would also allow the additional space to be used for extra meeting space, informal discussions with parents and a place to drop children off within the secure boundary of the Playgroup.



It would be clean and bright and more suitable for what will be the main entrance to the Playgroup. In addition we have proposed a covered canopy leading from the entrance gates to the both the new building and the existing entrance to allow children to be dropped off and be protected from the weather. We are also proposing that the current boundary wall is enhanced either with a painted colourful scheme or an over-clad with timber panels that can be painted easily to make the entrance more open and inviting to all who use it and clearly delineate the Playgroup entrance from the main Toll Community Centre entrance.

The Toll Community Centre have gained initial funding from Fife Environmental Trust to carry out the works and would also seek contributions from the community to assist in the project.

CONCLUSION

In summary, the Applicants seek to improve a tired and unwelcoming entrance, making it safe, open and inviting and uplifting for the current and future users of the Toll community Centre and Playgroup.

It is a low cost and community driven initiative that should be supported by Fife Council

Signal Architects Ltd

Signal Architects are a Scottish practice based in Aberdour Fife.

Signal Architects are firm believers in modern, high quality and sensitive design with a proven track record of understanding and respect for local history and context. They have completed a number of high quality and sensitive projects in Fife with the support of the planning department and local communities.