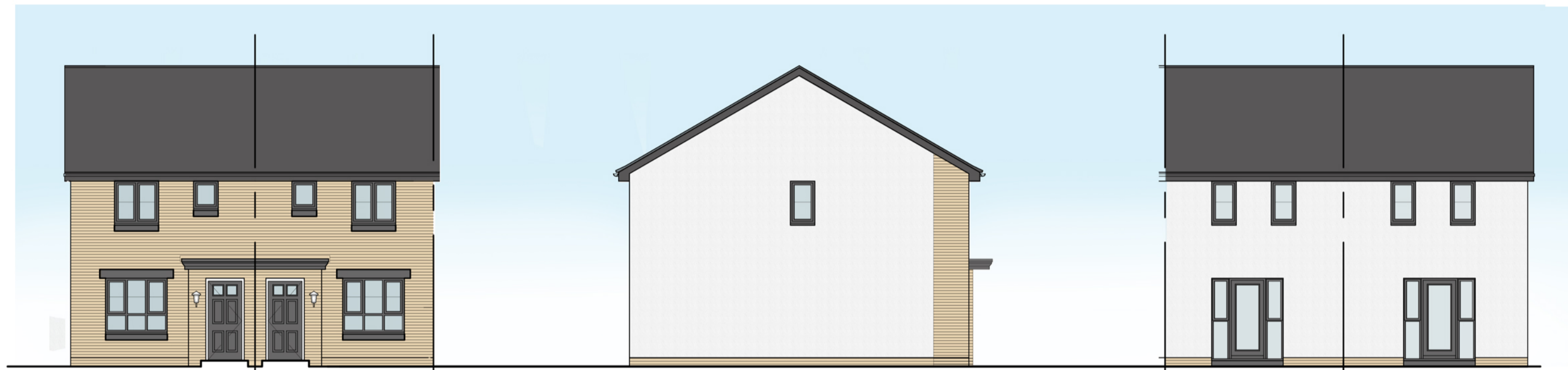


Front Elevation

Side Elevation

Rear Elevation

Palette 01

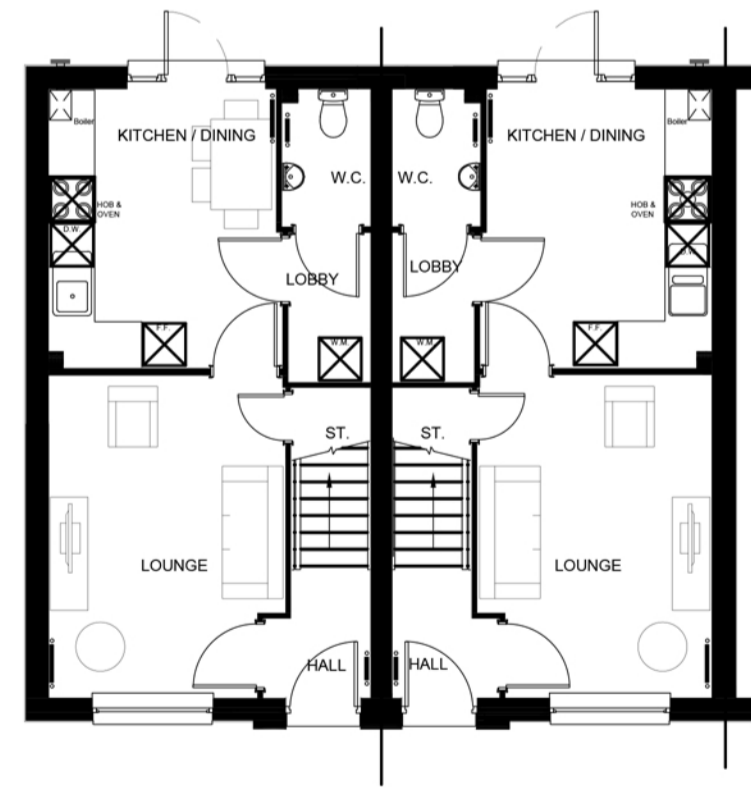


Front Elevation

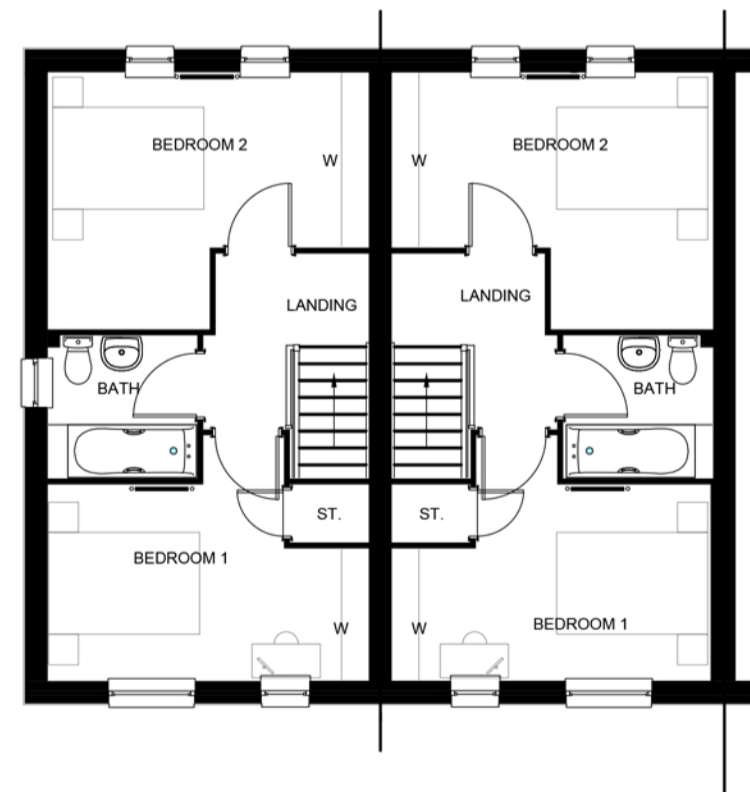
Side Elevation

Rear Elevation

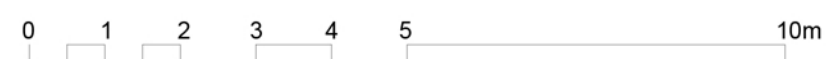
Palette 02



Ground Floor



First Floor



External Finishes

Material	Palette - 01	Palette - 02
	BASECOURSE + MINOR FEATURES	BASECOURSE + FEATURES
	(A)	(B)
Render	Drydash - Nordic White Chip on white by "Stone Pack"	Drydash - Nordic White Chip on white by "Stone Pack"
Roof tiles	"Russell" "Highland" Smooth Grey	"Russell" "Highland" Smooth Grey
Stone	Brickwork Base and Minor Features "Ibstock" "Hadrian Buff" with Buff pointing	Brickwork Base & Features "Ibstock" "Hadrian Buff" with Buff pointing
Window sills	PC conc. in Grey	PC conc. in Grey
Windows	Grey uPVC	Grey uPVC
Soffits	Grey uPVC	Grey uPVC
RW goods	Black uPVC	Black uPVC
Front door	Grey uPVC	Grey uPVC
Back door	Grey uPVC	Grey uPVC
Garage door	Grey uPVC	Grey uPVC



HALLIDAY FRASER MUNRO  
CHARTERED ARCHITECTS & PLANNING CONSULTANTS

Project:  
Land at Countesswells, N2 and N13 Parcels

Client:  
Barratt North Scotland

Title:  
Fasque House Type Finishes

Document Reference						
Revision / Location	Original Code	Volume	Location	Level	Type	Revision Number
11642	HFM	-	ZZ	-	ZZ	-DR - A - P(01) 08

Drawing Status: PLANNING  
Scale: 1:100 @ A1  
Date: January 2021

Do not scale this drawing.  
Ordnance Survey material is reproduced with the permission of the controller of her Majesty's Stationery Office Crown Copyright reserved.

The copyright of this drawing subsists in Halliday Fraser Munro Ltd.

Registered Office:  
8 Victoria Street,  
Aberdeen, AB10 1XB

T: 01224 388 700  
E: info@hfm.co.uk  
W: hfm.co.uk