

### Materials Schedule Key

- BRICKS**
- B1.0 Brick – Buff variegated brick – Stretcher bond, light grey colour mortar
  - B1.1 Brick – Buff variegated brick – Recessed soldier bond, light grey colour mortar
  - B2.0 Brick – Brown variegated brick – Stretcher bond, light grey colour mortar
  - B2.1 Brick – Brown variegated brick – Recessed soldier bond, light grey colour mortar
  - B3.0 Brick – Red/blue variegated brick – Stretcher bond, light grey colour mortar
  - B3.1 Brick – Red/blue variegated brick – Recessed soldier bond, light grey colour mortar
  - B4.0 Brick – Grey/purple variegated brick - Stretcher bond, light grey colour mortar
  - B4.1 Brick – Grey/purple variegated brick – Recessed soldier bond, light grey colour mortar
  - B4.2 Brick – Grey/purple variegated brick – Soldier bond, light grey colour mortar
  - B5.0 Brick – Striped brick – Grey/purple and Red/blue variegated brick alternate every 2 coursing – Stretcher bond, light grey colour mortar
  - B5.1 Brick – Striped brick – Buff and Red/blue variegated brick alternate every other coursing – Stretcher bond, light grey colour mortar
  - B6.0 Feature Brick – Red/blue variegated brick with randomized red glazed brick – Soldier bond, light grey colour mortar
  - B7.0 Glazed Brick – Colour to match apartment block colour\* - Stretcher bond, light grey colour mortar

- EXTERNAL WALL FINISH**
- F1.0 Wall finish – Render, light grey colour

- EXTERNAL DOORS**
- D1.0 Communal entrance door – Glazed door with curtain walling - Colour to match apartment block colour\*
  - D1.1 Private entrance door – Single door with sidelight – Dark grey frame with door leaf colour to vary\*
  - D2.0 Balcony door – Glazed door with fixed sidelight panel - Dark grey colour
  - D2.1 Balcony door – Single glazed door - Dark grey colour
  - D2.2 Balcony door – Glazed door with fixed sidelight panel and louvres - Dark grey colour
  - D2.3 Rear garden door – Double glazed doors – Dark grey colour
  - D3.0 Louvre doors – Double doors for refuse/cycle stores with ventilation louvres - Dark grey colour
  - D4.0 Single door - Dark grey colour

- BALCONIES**
- A1.0 Balcony – PPC contemporary flat metal railing with metal fascia and soffit - Dark grey
  - A1.1 Balcony – PPC contemporary perforated metal panel balustrading with metal fascia and soffit - Dark grey
  - A1.2 Balcony – PPC contemporary solid metal panel balustrading with metal fascia and soffit - Balustrading, fascia and soffit colour to match apartment block colour\*
  - A2.0 Balcony – Brick upstand wall with PPC contemporary flat metal railing and soffit – Brick upstand colour to match adjacent brick colour. Balcony railing and soffit colour in dark grey
  - A2.1 Balcony – Brick upstand wall with PPC contemporary flat perforated metal panel balustrading and soffit – Brick upstand colour to match adjacent brick colour. Balcony railing and soffit colour in dark grey

**Notes:**  
Do not scale. All dimensions are in millimetres unless otherwise stated. This drawing should be read in conjunction with all relevant project information and contract documentation. All dimensions to be checked prior to fabrication and or commencement of works. All works to comply with all relevant legal standards, building regulations and warranty provider requirements. Report any discrepancies, if in doubt ask.

Revisions:					
Rev	Status	Date	Description	Drn	Chkd
C01	A3	15.04.21	Planning Issue	TC	AA

Client Name:		<b>Sempra Homes</b>	
Project Name:		<b>Chapel Gate</b>	
Drawing Name:		<b>Block C Elevation - East</b>	
Drawing Number:	Rev:	Status:	
<b>CPK-BPTW-12-ZZ-DR-A-2031</b>	<b>C01</b>	<b>A3</b>	
Project No:	RIBA Stage:	Drawn By:	Scale:
<b>20-173</b>	<b>3</b>	<b>TC</b>	<b>1:100 @ A2</b>

### PLANNING ISSUE

40 Norman Road,  
Greenwich, London  
SE10 9QX  
t. 020 8293 5175  
bptw.co.uk



### Materials Schedule Key Continued

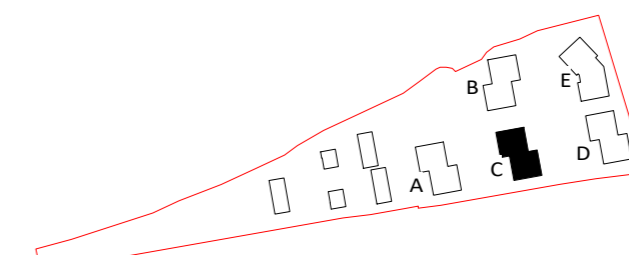
- WINDOWS**
- W1.0 Openable window – Single openable window - Dark grey colour
  - W1.1 Openable window – Single openable window with attenuation louvres - Dark grey colour
  - W2.0 Openable window – Single openable window with side fixed glazing - Dark grey colour
  - W2.1 Openable window – Single openable window with side fixed glazing and attenuation louvres - Dark grey colour
  - W3.0 Openable window – Double openable window - Dark grey colour
  - W3.1 Openable window – Double openable window with attenuation louvres - Dark grey colour
  - W4.0 Openable window – Double openable window with central fixed panel - Dark grey colour

- W4.1 Openable window – Double openable window with central fixed panel and attenuation louvres - Dark grey colour
- W5.0 Fixed curtain walling - Frame colour to match apartment block and house colour\*
- W6.0 Louvred window – Single ventilated louvre window - Dark grey colour
- W6.1 Louvred windows – Single, frosted, fixed window with ventilated louvres above - Dark grey colour

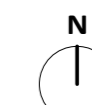
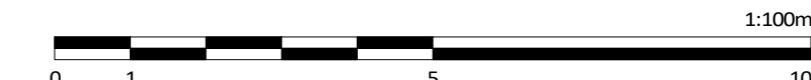
- RAILINGS**
- R1.0 Balcony metal screen – PPC contemporary perforated screen, full height - Dark grey colour

- SUNDRIES**
- T1.0 Concrete roof tiles – Dark grey colour
  - T2.0 Pressed metal capping – Dark grey colour
  - T3.0 Metal RWP/Hoppers/Gutters – Dark grey colour
  - T4.0 Canopy – PPC Folded Metal - Dark grey colour
  - T5.0 Dry Riser Inlet
  - T6.0 Roof Services (Roof Overrun, AOV, etc)
  - T7.0 Photovoltaic (PV) panels and Air Source Heat Pumps (ASHP) units. Numbers shown and location are indicative
  - T8.0 Finished concrete to exposed structural columns

- NOTES**
- Apartment Blocks and House Terraces to have dedicated colour: Block A – Blue, Block B – Yellow, Block C – Blue Green, Block D – Green, Block E – Red and House Terraces – Dark Grey - please refer to Design & Access Statement
  - Front door colour for houses to vary - please refer to Design & Access Statement
  - Engineering, frost resistant bricks proposed above damp proof course (approx up to 300mm) on all external brickwork walls. Colours to match brickwork above



Key Plan



1:100m