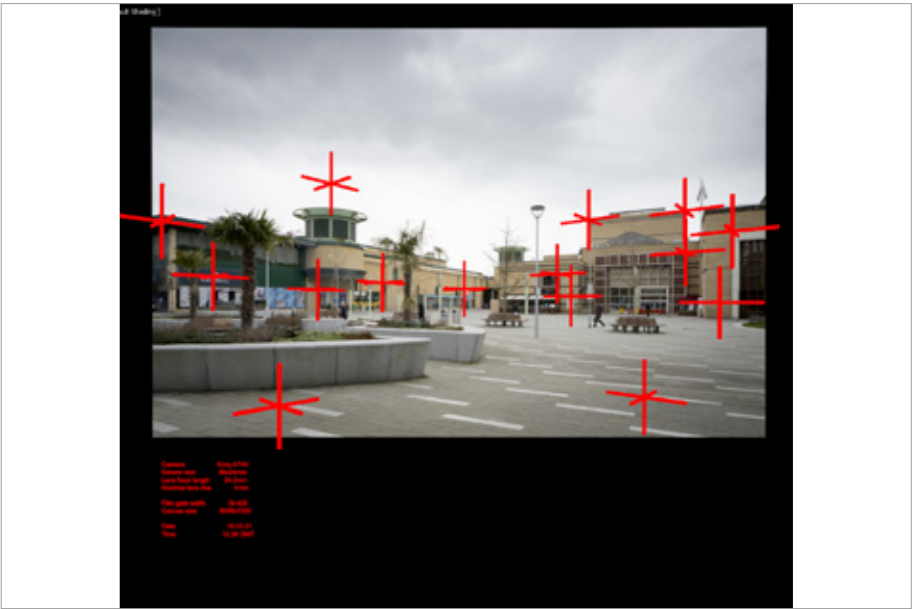


3.4 Screen grab of camera location in 3DS Max software



3.5 Screen grab of calculated horizon line



3.6 Screen grab of camera matching to survey data



3.7 Screen grab of model matched to photograph



3.8 Final camera matched photomontage



# View 16

3.1 Ordinance survey co-ordinates			
Point Ref	Eastings	Northings	AOD height
C1601	570119.252	188599.230	28.380
C1602	570121.886	188528.663	31.904
C1603	570119.601	188511.712	44.040
C1604	570099.697	188531.620	37.987
C1605	570093.564	188532.497	31.508
C1606	570088.351	188521.557	42.251
C1607	570089.678	188562.715	30.166
C1608	570086.517	188579.398	29.764
C1609	570049.436	188572.605	37.670
C1610	570101.344	188605.955	29.416
C1611	570092.313	188604.425	28.305
C1612	570104.462	188609.084	33.661
C1613	570081.093	188561.916	30.150
C1614	570114.127	188607.474	28.234
C1615	570117.066	188575.083	31.146

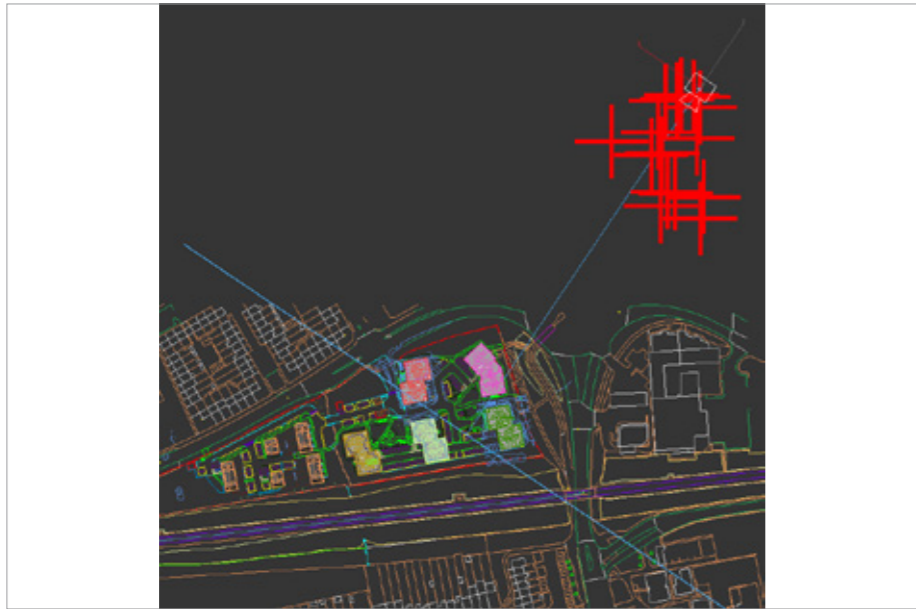


3.2 OS survey points marked on base photograph

3.3 View 16 camera location

Eastings 570119.53m  
 Northings 188614.889m  
 AOD height 29.898m  
 Approx distance to centre of site 377m  
 Approx bearing from North 214°





3.4 Screen grab of camera location in 3DS Max software



3.5 Screen grab of calculated horizon line



3.6 Screen grab of camera matching to survey data



3.7 Screen grab of model matched to photograph



3.8 Final camera matched photomontage



# View 17

3.1 Ordinance survey co-ordinates			
Point Ref	Eastings	Northings	AOD height
C301	569715.486	188336.112	30.983
C302	569742.644	188361.316	32.175
C303	569746.495	188362.852	34.582
C304	569789.922	188375.814	32.228
C305	569748.229	188350.935	33.084
C306	570179.153	188572.359	51.030
C307	569802.536	188367.040	31.205
C308	569735.963	188332.513	33.067
C309	569735.941	188332.498	40.532
C310	569710.182	188331.796	32.189
C311	569710.175	188331.737	31.317
C312	569708.361	188330.967	32.259
C313	569802.599	188367.150	38.735
C314	569790.545	188374.879	31.225

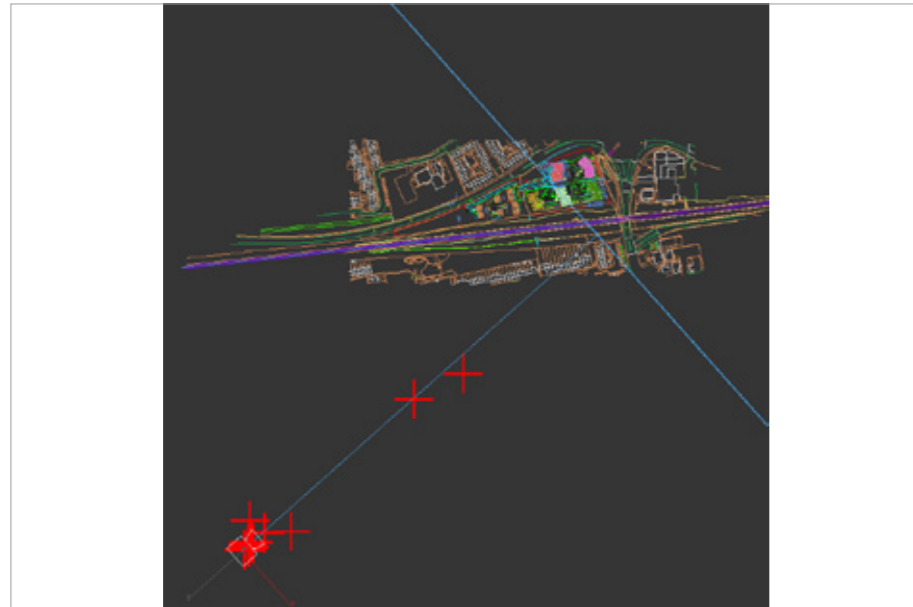


3.2 OS survey points marked on base photograph

3.3 View 17 camera location

Eastings                    569704.153m  
 Northings                188332.837m  
 AOD height                32.853m  
 Approx distance to centre of site 880m  
 Approx bearing from North      48°





3.4 Screen grab of camera location in 3DS Max software



3.5 Screen grab of calculated horizon line



3.6 Screen grab of camera matching to survey data



3.7 Screen grab of model matched to photograph



3.8 Final camera matched photomontage



## 4.0 Final verified photomontages



# View 1 existing

Single frame image | Focal length 24.2mm | Camera height above survey point 0mm | Nominal lens rise 0mm | Date 15.03.21 | Time 13:42





## View 1 proposed



To achieve the optimum viewing distance of up to 500mm, we recommend printing this image edge to edge on A2 landscape and viewing it on site from a distance of 405mm. Please refer to section 2.8 on page 4 of this document for further information.



## View 2 existing

Single frame image | Focal length 24.2mm | Camera height above survey point 0mm | Nominal lens rise 0mm | Date 15.03.21 | Time 13:36





## View 2 proposed



To achieve the optimum viewing distance of up to 500mm, we recommend printing this image edge to edge on A2 landscape and viewing it on site from a distance of 405mm. Please refer to section 2.8 on page 4 of this document for further information.



## View 3 existing

Single frame image | Focal length 24.2mm | Camera height above survey point 0mm | Nominal lens rise 0mm | Date 15.03.21 | Time 14:07





## View 3 proposed



To achieve the optimum viewing distance of up to 500mm, we recommend printing this image edge to edge on A2 landscape and viewing it on site from a distance of 405mm. Please refer to section 2.8 on page 4 of this document for further information.



## View 4 existing

Single frame image | Focal length 24.2mm | Camera height above survey point 0mm | Nominal lens rise 0mm | Date 15.03.21 | Time 13:53





## View 4 proposed



To achieve the optimum viewing distance of up to 500mm, we recommend printing this image edge to edge on A2 landscape and viewing it on site from a distance of 405mm. Please refer to section 2.8 on page 4 of this document for further information.



# View 5 existing

Single frame image | Focal length 24.2mm | Camera height above survey point 0mm | Nominal lens rise 0mm | Date 15.03.21 | Time 13:59





## View 5 proposed



To achieve the optimum viewing distance of up to 500mm, we recommend printing this image edge to edge on A2 landscape and viewing it on site from a distance of 405mm. Please refer to section 2.8 on page 4 of this document for further information.



# View 6 existing

Single frame image | Focal length 24.2mm | Camera height above survey point 0mm | Nominal lens rise 0mm | Date 15.03.21 | Time 12:15





## View 6 proposed



To achieve the optimum viewing distance of up to 500mm, we recommend printing this image edge to edge on A2 landscape and viewing it on site from a distance of 405mm. Please refer to section 2.8 on page 4 of this document for further information.



# View 7 existing

Single frame image | Focal length 24.2mm | Camera height above survey point 0mm | Nominal lens rise 0mm | Date 15.03.21 | Time 13:09





## View 7 proposed



To achieve the optimum viewing distance of up to 500mm, we recommend printing this image edge to edge on A2 landscape and viewing it on site from a distance of 405mm. Please refer to section 2.8 on page 4 of this document for further information.



## View 8 existing

Single frame image | Focal length 24.2mm | Camera height above survey point 0mm | Nominal lens rise 0mm | Date 15.03.21 | Time 13:29





## View 8 proposed



To achieve the optimum viewing distance of up to 500mm, we recommend printing this image edge to edge on A2 landscape and viewing it on site from a distance of 405mm. Please refer to section 2.8 on page 4 of this document for further information.



# View 9 existing

Single frame image | Focal length 24.2mm | Camera height above survey point 0mm | Nominal lens rise 0mm | Date 15.03.21 | Time 13:21





## View 9 proposed



To achieve the optimum viewing distance of up to 500mm, we recommend printing this image edge to edge on A2 landscape and viewing it on site from a distance of 405mm. Please refer to section 2.8 on page 4 of this document for further information.



# View 10 existing

Single frame image | Focal length 24.2mm | Camera height above survey point 0mm | Nominal lens rise 0mm | Date 15.03.21 | Time 14:19





## View 10 proposed



To achieve the optimum viewing distance of up to 500mm, we recommend printing this image edge to edge on A2 landscape and viewing it on site from a distance of 405mm. Please refer to section 2.8 on page 4 of this document for further information.



# View 11 existing

Single frame image | Focal length 24.2mm | Camera height above survey point 0mm | Nominal lens rise 0mm | Date 15.03.21 | Time 11:55

