

New fittings to client brief on site then wastes to new 100p sump etc - see Note ⑤ all to L.A. approval on-site

New tile hung dormers added - see B-B spec with 125x50 s.w stud walls on / over new joists etc (min double when parallel) then double rafters at higher level etc. New 1950x1200 high glg windows, see Note ⑤ with d.p.c. to cill at 900

New load bearing 100mm stud walls, insulated etc - see D-D spec, with access doors to roof void to client brief on-site

New Velux glg rooflight 980x780 to trimmer / double rafters see B-B

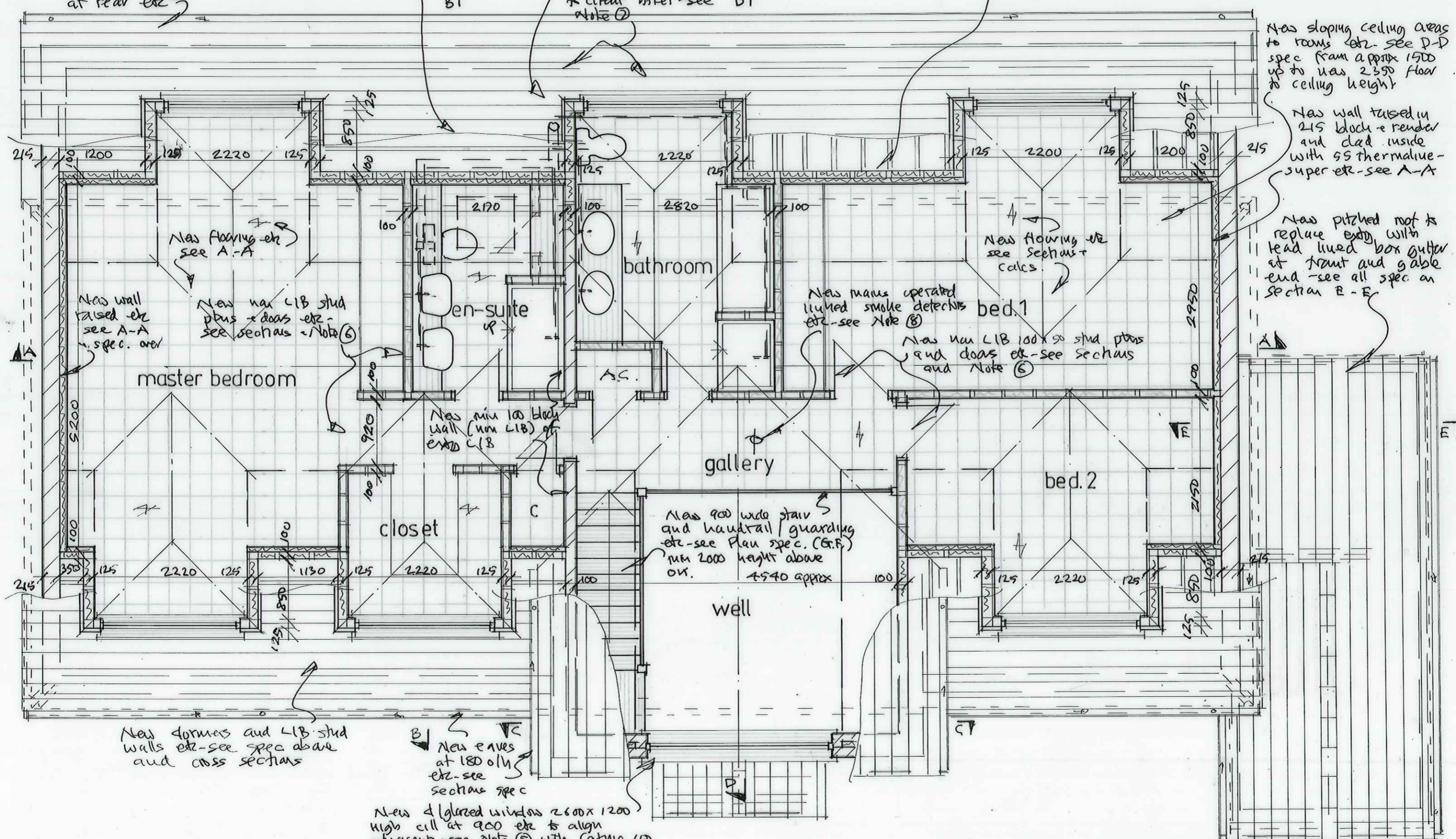
Note: new fascia at 300 ohang at rear etc

Fit new mech. vents to new Bath rooms, suggest u/g duct across roof to client brief - see Note ②

New sloping ceiling areas to rooms etc - see D-D spec from approx 1500 up to new 2350 floor to ceiling height

New wall tiled in 215 block + render and clad inside with SS thermal-insuper etc - see A-A

New pitched roof to replace existing with lead lined box gutter at front and gable end - see all spec on Section B-E



New flooring etc see A-A

New wall raised etc see A-A spec. over

New new LIB stud plus doors etc - see sections - Note ⑥

New flooring etc see sections + calc.

New mains operated linked smoke detectors etc - see Note ⑧

New new LIB 100x50 stud plus and doors etc - see sections and Note ⑥

New min 100 block wall (non LIB) of extd LIB

New 900 wide stair and handrail/guarding etc - see Plan spec. (G.F.) min 2000 height above ov. 7540 approx

New dormers and LIB stud walls etc - see spec above and cross sections

New eaves at 180 ohg etc - see sections spec

New glg window 2600x1200 high cill at 900 etc to align adjacent - see Note ⑤ with catnic 150 high lintel over to new 300 cavity wall etc - see C-C + D-D

PROPOSED FIRST FLOOR PLAN 1:50 Drg. No. HG:32:JAWS:PP2