

Remove existing flat roof retain extra joists then new pitched roof added as main roof except at 35° pitch using 'Plan' tiles laid at approved gauge and min lap on 38x25 s.w. battens on roofing felt to BS 2747 on new min 100x75 s.w. rafters at max 400% off s.w. bearing to wall at high level then to end joists at eaves with 100x75 s.w. pile plate with 125x75 s.w. purlin at mid span with 100x75 struts down ends s.w. batten plus 100x75 s.w. collar every max 3m rafter. At top was 150 deep code 4 lead flashing at wall, at eaves felt over fillet over fascia at zero o/h then 100 p RW gutter to 75 p RW 15.

At front area double canvas with turn rafters to use min 170x20 s.w. ridge board then at wall area was box gutter framed with code 5 lead, min 200 wide taken under tiled roofing and up wall as flashing, a 20 mm ext ply on s.w. battens all laid to fall to front to discharge over new roof. New rear gable end of 100 block raised off end of lead weight in 1:2.4 mix with 2 coat slc render to new and end wall to BS 5262. At front was 100x75 s.w. stud gable raised off double rafters with min 10 mm ext ply then E.M.L. then 2 coat render etc.

Retain extra walls & openings and floor (found)

New front canopy added - see elevation with 'Plan' tiles on battens & felt etc - see spec. above on 100x50 s.w. rafters at 40° pitch at 400% with 170x20 s.w. ridge board fixed to new min 100x75 s.w. joists supported on new 600x min 600 deep 125x75 s.w. art.w. gallow brackets bolted to wall with min 10 mm ext ply to soffit and suggest downlights added, then new gable of 2 coat slc render to BS 5262 on E.M.L. on min 10 mm ext ply on 100x50 stud gable off double joists. New barge board at matching 150 o/h with ext. ply to soffit. New 150 high code 4 lead flashing at roof junction.

New roofing for front projection see C-C. spec and over labare with min 150x50 s.w. rafters at 40° pitch etc with 220x20 s.w. ridge board and lags boards over main roof

New 40° pitched roof with raised hip end etc see A-A spec

New clad 215 block wall rendered etc off end wall - see A-A Plans

New flooring added independent of end part retained if done in two stages - see A-A spec. etc

clad end wall align new - see plan

extd (concrete) solid floor and foundations retained but checked for adequacy to L.A. approval on-site

New main not added all at 40° pitch etc see A-A spec - above

At stairwell area new joists off new main double rafters etc - see calc details then joists bolted to rafters with pile plate etc - see A-A. Then new main 150x75 s.w. joists over well bolted to rafters etc with M.S. straps to restrain min end brace rafters and joists to new gable at max 1200% etc - see also C-C

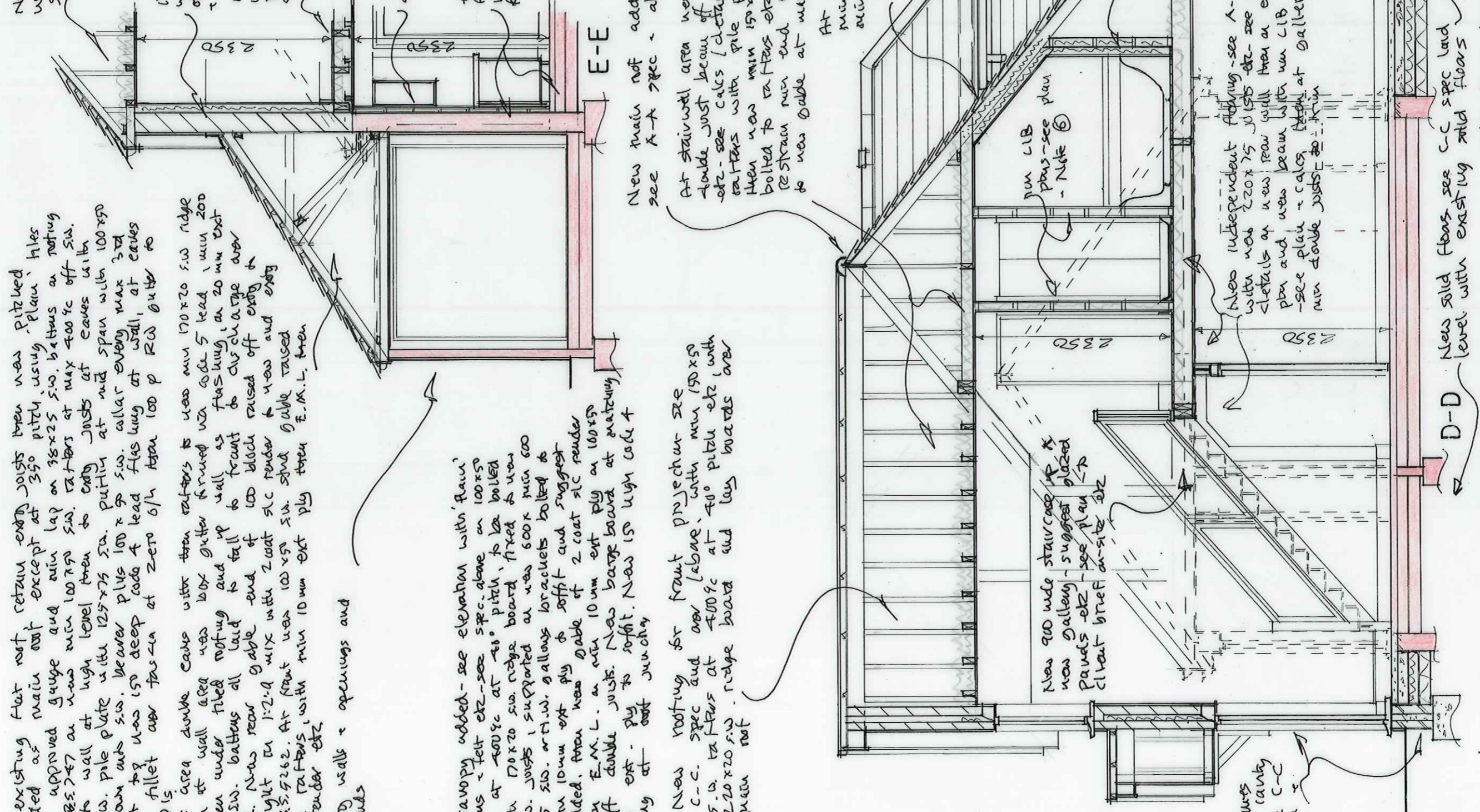
At sloping ceiling areas provide min 90 celotex between new min 170x50 rafters then min 90 celotex over plus 12.5 pilled - s skim finish

New 170x90 s.w. rafters supported on new L-LIB min 100x90 s.w. stud wall at max 400% over new joists, with 90 celotex between them 50 celotex over plus 12.5 pilled celotex to all access doors to roof voids

New eaves spec etc as A-A with at least 300 overhang with suggest down lights to soffit

New insulated beam over opening - see plan - calc - Note 2 to wall 300 cavity wall on d.p.c. and new foundations etc see C-C spec

New d/g frames to new 300 cavity wall etc - see C-C spec - plan over



Note - provide level access platform if doors open out, suggest decking but if solid leave min 90 gap to wall to avoid bridging of d.p.c. to client brief on-site