



New 400 pitched (slipped roofing to new main roof and dormers using plain tiles with matching hip and ridge tiles with continuous vents, with formed code 5 lead valleys or valley tiles

New 'plain' tile hung dormer with code 4 lead flashing and soaker at roof junctions

New clay-paving to tile verge to new bridge board at 180 o/n with un-vented soffit pass new s/c render - wall part raised off e/sy void. wall reinforced to match.

New 190 high code 4 lead flashing at wall junction

300 o/n at rear

180 o/n

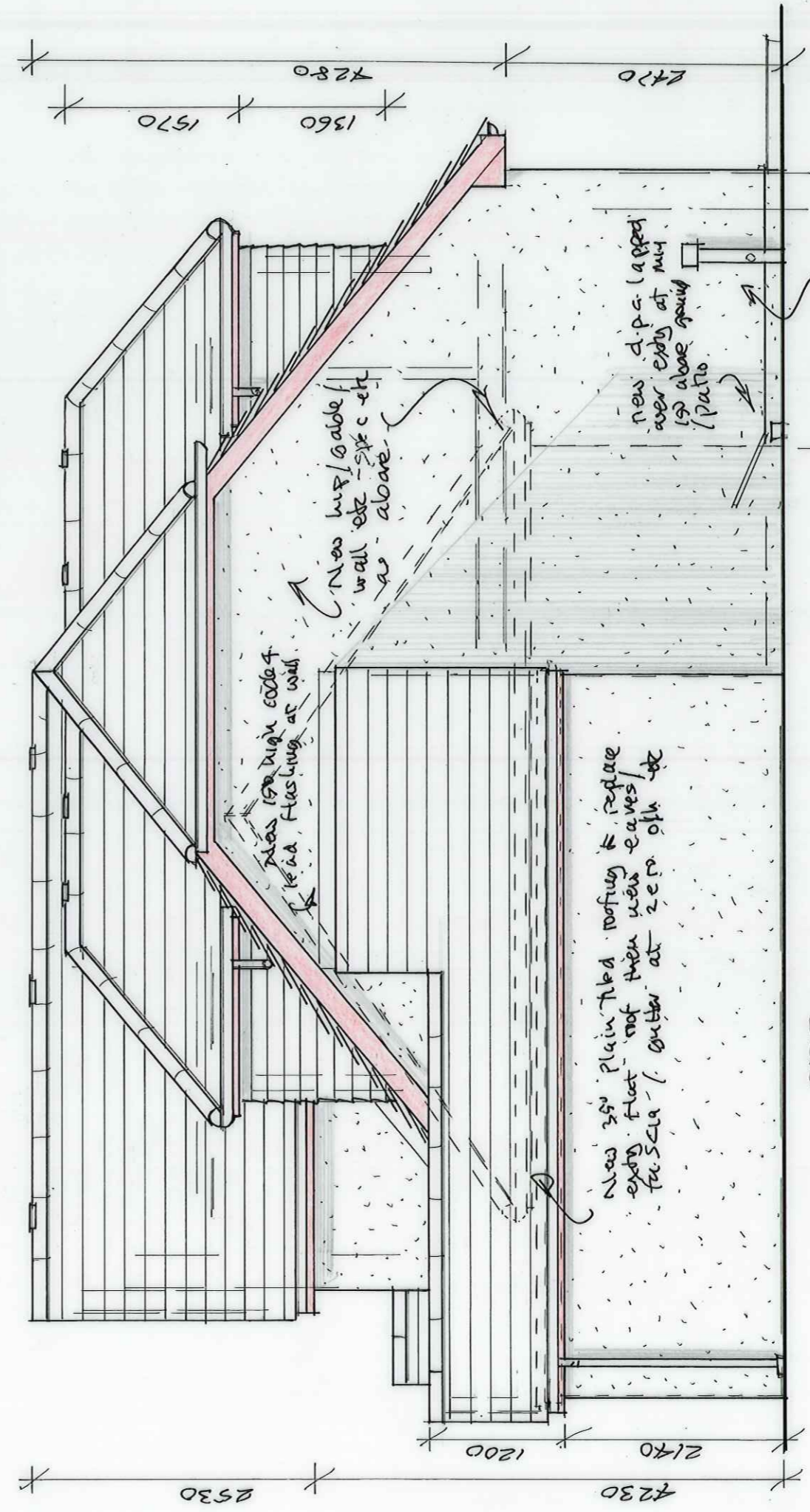
If new gas fire then flue with wire guard & U.A. approval on-site

New canopy added see front and section spec

### FLANK

New d.p.c. lapped over e/sy at min 150 above ground/patio

Note level access platform if doors open out etc see section - Plan



### SIDE

New 1000 high s/sb study with access panel etc