



New pitched roof added over front projection - see A-A spec with plain tiles on battens in gable. Supra on min 150x95 rafters at max 400% etc. - see also D-D spec, with 220x20 s.w. ridge board then min 150x95 s.w. joists bolted to rafters with min 150 quilt between min 125 over then 12.5 foil backed pilob + shan ceiling

New sloping ceiling areas to match / align main roof - see D-D with 90 celotex between then 50 celotex over plus 12.5 pilob + shan etc

Batts spec as per A-A with felt over fillet over fascia at matching 180 o/m with un-vented soffit then 100 p R/W gutter to 75 p R/W. All eaves now rafters to be birds mounted over new 100x50 s.w. wall plate bedded and strapped to wall at max 600% also strap each rafter to wall for restraint.

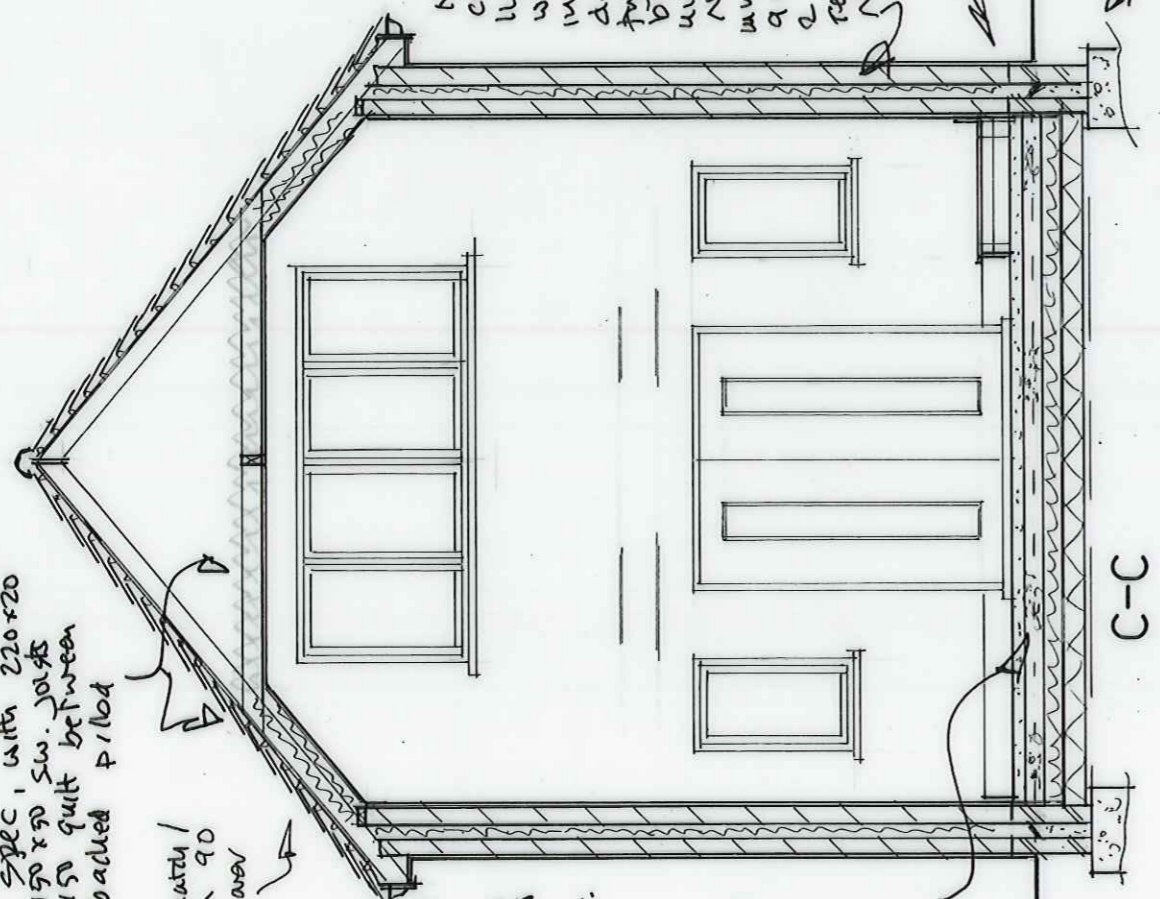
New solid flooring laid level with entry - see Plan - P-D using min 50 mm slc screed on min 100 mm conc. slab - spec as founds (see over) on 100 celotex turned up at perimeter, on min 1200 gauge d.p.m. lapped up + over new and entry d.p.c. on min 150 consolidated hard core / blinding

New pitched roofs to new dormers, see A-A spec with plain tiles on battens on gable etc on new min 100x95 s.w. rafters at max 400% to min 170x20 s.w. ridge and hip boards then to main roof via 220x20 s.w. lay boards with they lade 5 lead valleys. New rafters fixed to new min 100x95 s.w. joists off hangers off at sides 100x95 s.w. noggins off joists to rafters etc do new eaves / fascia at 180 o/m post new shed wall - spec as A-A with un-vented silt and 100 p R/W gutter etc

New dormer - see also plan of 125x95 shed at max 400% with 125x125 over as lundol, then 125x100 to corners and reveals at min 4 joists where parallel and over joists where not see plan + calcs. then at higher level off double rafters, with 10 celotex between then 12.5 pilob + shan inside, then outside clad with min 10 mm ext ply then roof felt - then 38x19 s.w. battens at approved gauge and min lap then plain tile hanging

New main roof extended down to new eaves etc spec as A-A + above - D-D at entry but at raised pos. to existing, with cut back rafters, 100x95 fixed to dormer face with through vents required then code 4 lead flashing

New windows - see Plan - Note 6 + entry openings etc



C-C

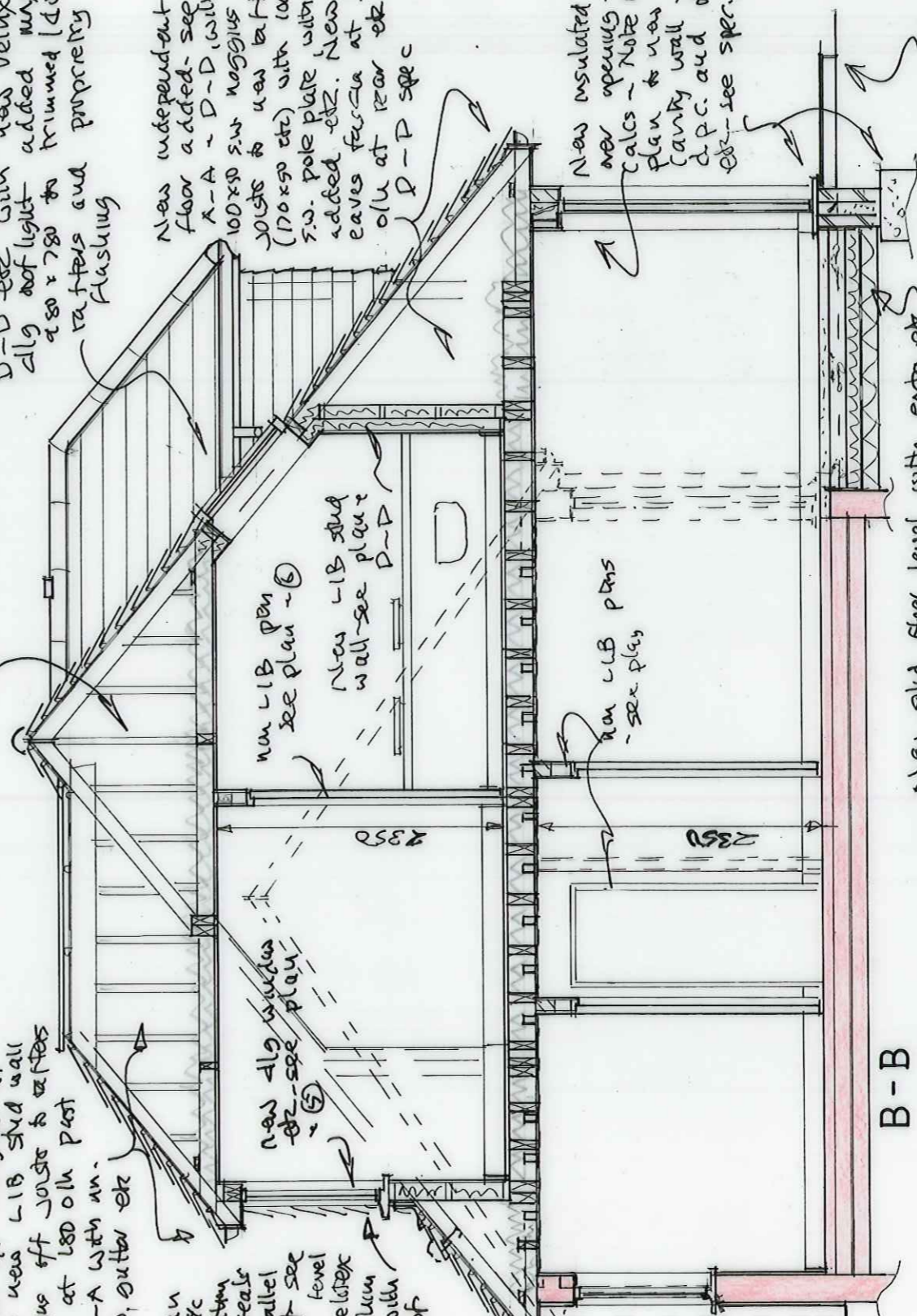
New external walls - see plan of cavity constr min 300 wide of 2:No 100 mm light weight block skins in 1:2:4 mix to walls in M.S. masonry plates with insulated cavity closes and vertical d.p.c. at reveals, with insulated 'cavity' type lundol + insulated beams over b/folds etc - see calcs. cavities min 150 high and bearing. New mass fill quilt batts to min 100 mm cavity on S.S. wall ties at max 900% first 2 + 450% vertical. New 2 coat plaster inside and 2 coat slc render outside + B.S. 5262. New d/g frames - see Note 5 + plans

New d.p.c. lapped over existing at min 150 above ground (patio then double fretlay shown down to new funds with lean-mix fill to cavity below ground levels all on new min 500 wide + min 1000 (overall) deep funds actual depth d/cf on-site + L.A. approval of 1:2:4 mix using max 40 p aggregate and sulphate resistant cement

New stop up ceiling areas - see D-D etc with new velux d/g roof light added max 450 x 780 to trimmed double rafters and properly flashing

New independent floor added - see A-A + D-D with 100x95 s.w. noggins off joists to new battens (170x95 etc) with 100x95 s.w. pole plate with u/s added etc. New eaves fascia at 300 o/m at rear etc - see P-P spec

New insulated beam over openings - see calcs - Note 6 + cavity wall etc d.p.c. and strings etc - see spec. above



B-B

New solid floor level with entry etc see above (C-C) spec - plan

New platform reqd. etc - see D-D - plan