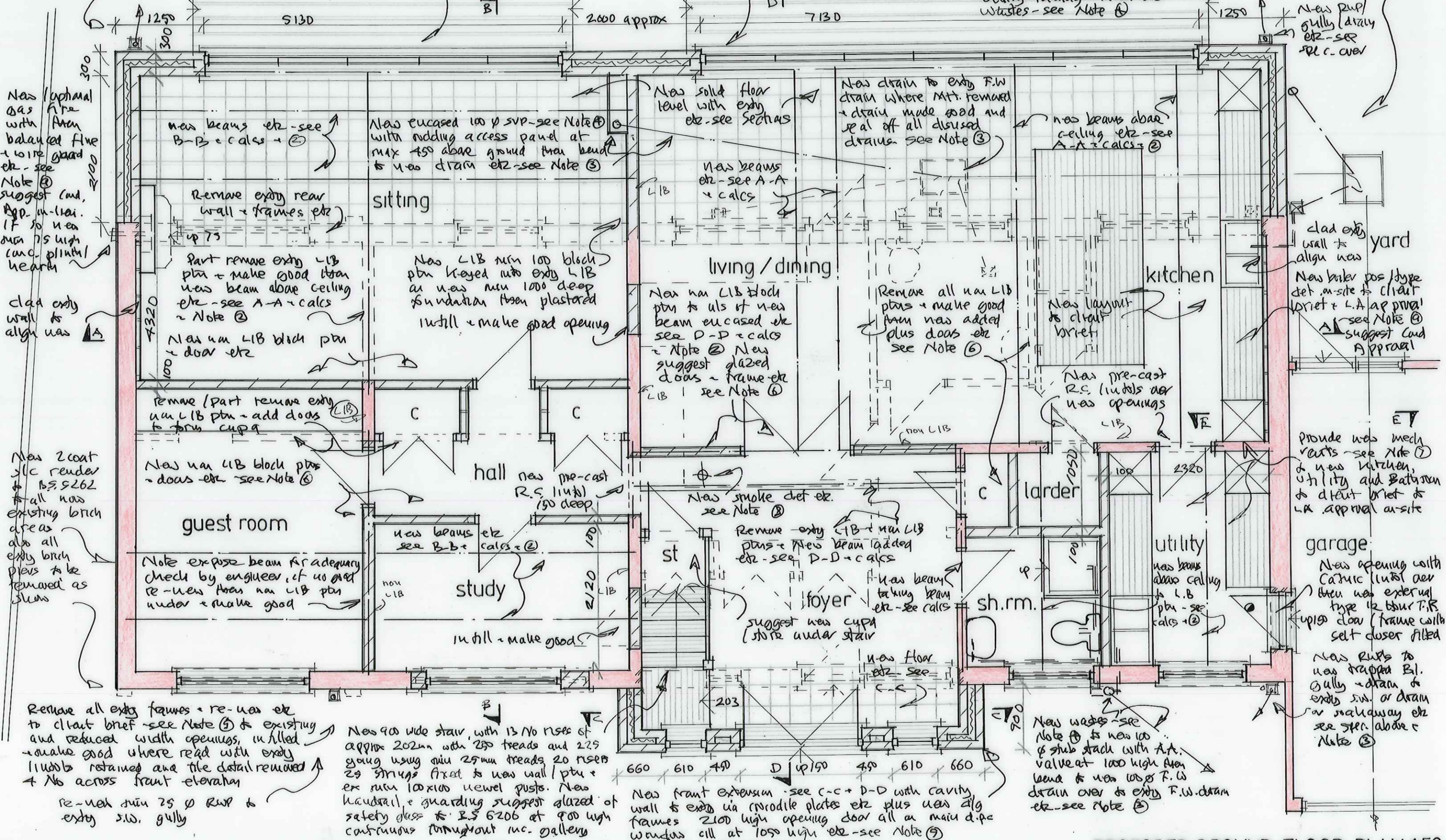


10 1 2 3 4 (1:50)
 New min 75p RWP to trap & B.I. Gully with band to new 100p drain (4pvc) See Note ③ to new min 1m³ hollow brick filled soakaway 'OSMA-WAVIN' or similar approved - all to L.A. approval on-site

New 2 No alg frames - see Note ⑤ - 2100 high opening with insulated beam over - see B-B + D-D + calcs / details + Note ② with new 300 cavity wall + foundations etc - see sections to entry wall via M.S. cradole plates etc

Note: Consent to be achieved from water Board for build over agreement with new pre-cast (1100) placed over drain passing through new build min 600 clear of drain with surge until. Invert to be det. on-site and agreed with Authority. New manhole built at entry junction min 600x450 int. dims of 225 class B semi-cmg brick u 1:3 mix on 150 concrete base, and steel cover over. New 2 No 100 p drains - see Note ③ from new 100p stub stack - see spec. below - new trapped roddable B.I. stully taking sink etc wastes - see Note ④



New (uphaul) gas fire with Alcon balanced flue + wire guard etc - see Note ③ suggest cond. App. in-lit. If so new min 75 high cond. plinth/hearth

clad entry wall to align new

New 2 coat s/c render to BS 5262 to all new existing brick areas also all entry brick piers to be removed as shown

Remove all entry frames + re-use etc to client brief - see Note ⑤ to existing and reduced width openings, infilled + make good where read with entry 1100b restrained and tile detail removed + No access front elevation
 re-use min 75 p RWP to entry s.w. gully

New 900 wide stair, with 13 No rises of approx 202mm with 250 treads and 225 going using min 25mm treads 20 rises 29 strings fixed to new wall / ptn + ex min 100x100 newel posts. New handrail + guarding suggest glazed of safety glass to BS 6206 at 900 high continuous throughout inc. gallery

New front extension - see C-C + D-D with cavity wall to entry via cradole plates etc plus new alg frames 2100 high opening door all on main d.p.c window sill at 1050 high etc - see Note ⑤

New wastes - see Note ④ to new 100 p stub stack with A.A. valve at 1000 high Alcon beam to new 100p R.W. drain over to entry F.W. drain etc - see Note ⑤

Provide new mech vents - see Note ⑦ to new kitchen, utility and bathroom to client brief to L.A. approval on-site

New opening with Castuc (unit over then new external type 12 hour F.R. up 150 door frame with self closer fitted

New RWP to new trapped B.I. Gully - drain to entry s.w. or drain or soakaway etc see spec. above + Note ③