

0 1 2 3 4 5 (1:50)

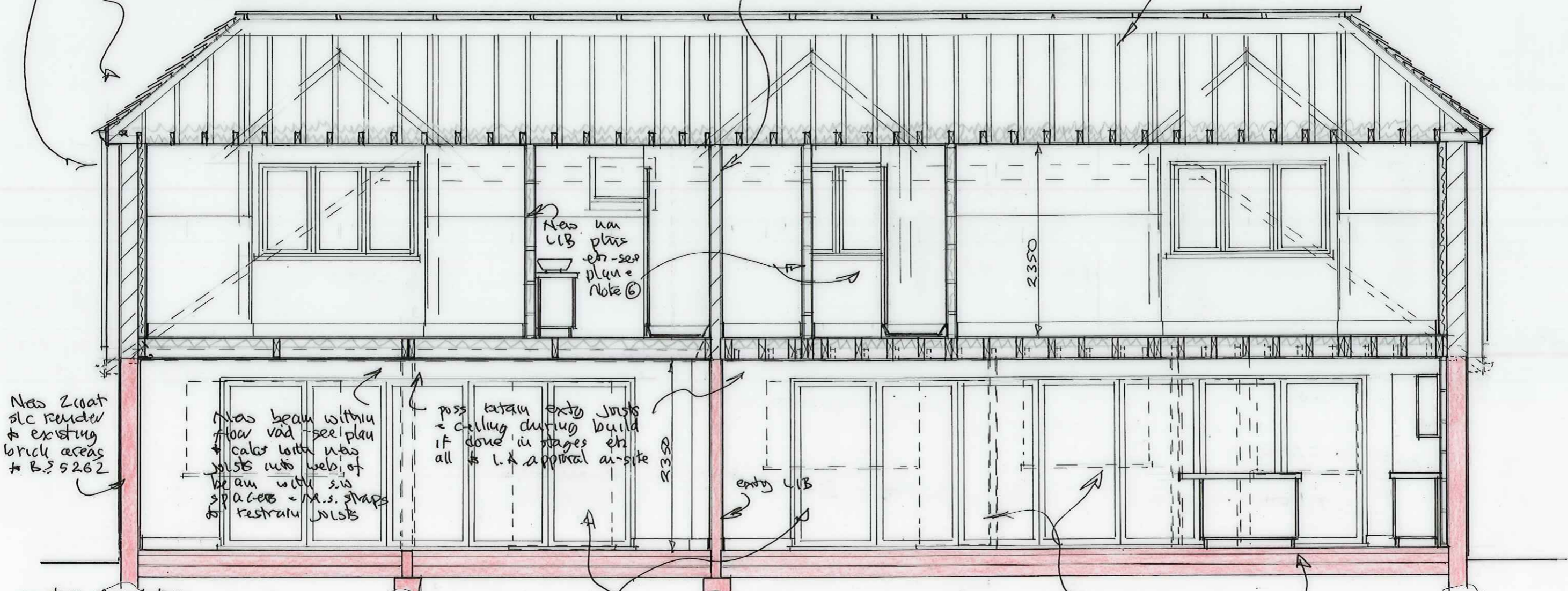
New gable ends raised off existing G.F. walls using 215 celcon-solar or similar approved light-weight block in 1:2:4 mix then 2 coat slc render to BS 5262 to match (align existing and new at G.F. then internally clad with 55mm thermaline-super to walls via plaster dabs then skim

New pitched roofing added using 'Plain' tiles laid at approved gauge and min lap on 28x25 s.w. battens, on 'Tyvek-Supro' or similar approved felt on new 170x50 s.w. joists at max 400% - see also B-B etc, with min 100x50 s.w. rafters at raised hips to new 220x20 s.w. ridge and 200x20 s.w. hip boards all at new 40° pitch. At eaves tyvek over s.w. All set over new fascia at existing 180 o/h - all to Tyvek spec/detail with new 100 p RW gutter to 75 p RW's then un-vented soffit  
Note: doubled up rafters to form dormers etc - see B-B

New min 190x50 s.w. ceiling joists - see also B-B bolted to new rafters etc - see calcs/details with min 190 quilt between plus min 125 quilt over then 12.5 oil backed p/bd - skim ceiling etc.

Note: At end hips felt to fascia etc - as spec over labar with 100 x 50 rafters fixed to new 160x50 s.w. noggins off new 150x50 joists at max 400% etc with 100x50 s.w. pole plates

Note: new min 100 block (non-LIB) partition raised off exty LIB ptn for added stability - see Note 6



New 2 coat slc render to existing brick areas to BS 5262

New beam within floor void - see plan - calcs with new joists into web of beam with s.w. spacers - M.S. straps to restrain joists

poss retain exty joists - ceiling during build if done in stages etc all to L.A. approval on-site

existing foundations to be checked for adequacy to take extra loadings etc to L.A. approval on-site

New flooring laid of min 22mm T.O.G. edged floor grade chipboard or floor boards, moisture resistant to wet areas - to check brief on-site on new 220x75 joists, poss go wide to short spans etc - see calcs/details - B-B - C-C etc at max 400% - see calcs off M.S. hangers off s.w. beaver to walls then into web of beam or an exty beam to left hand side then on new beam - exty LIB ptn to right - see plan etc with min double joists under LIB - not LIB ptns

Notes: new min 100mm mineral wool as sound insulation in 'netton' draped over new joists then provide M.S. straps to restrain them and three joists to parallel walls at max 1200% then new 12.5 p/bd + skim ceiling etc

Retain existing solid flooring