

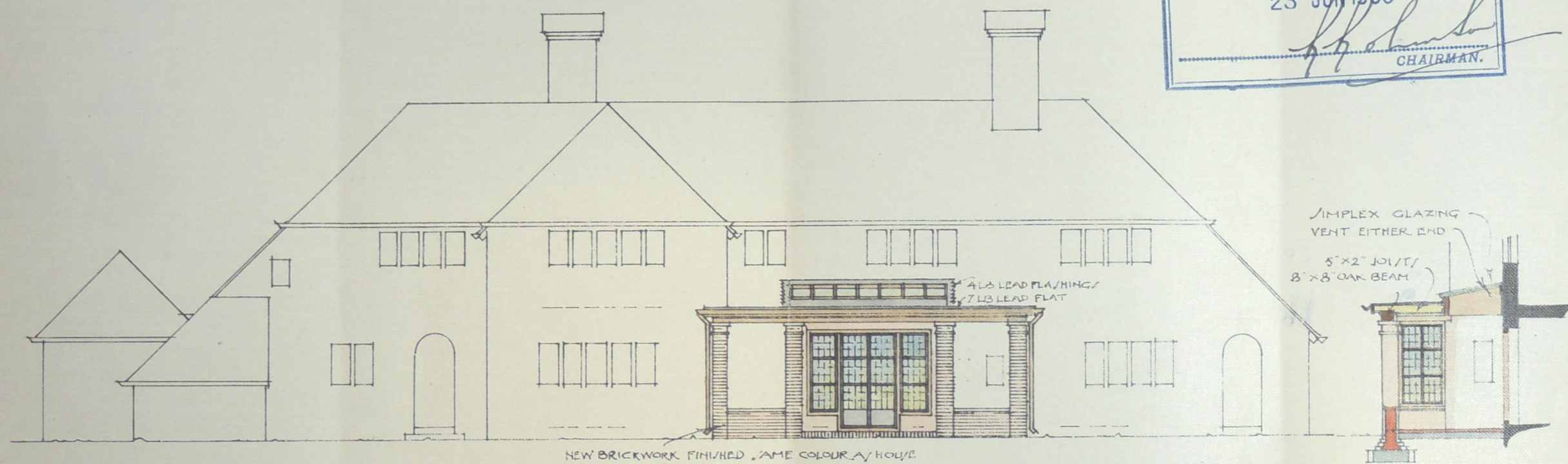
GREENWAY KIPINGTON ROAD SEVENOAKS

PROPOSED LOGGIA FOR A. B. KEITH E/Q.

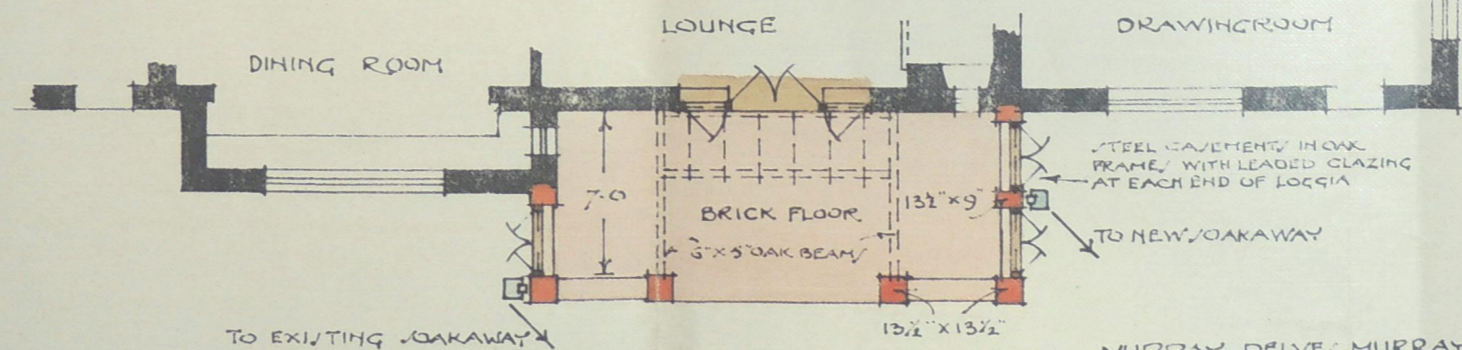
Density
Area of Plot
FINAL INSPECTION

84/13

THE URBAN DISTRICT COUNCIL OF SEVENOAKS.
This Plan was approved on
23 JUN 1936
[Signature]
CHAIRMAN.



BACK ELEVATION TO GARDEN



SCALE 1/8" = ONE FOOT

PART GROUND PLAN

MURRAY DELVE, MURRAY & ATKIN,
ARCHITECTS,
10 KING BENCH WALK TEMPLE LONDON E.C. 4,
AND 13A ENY ROAD EASTBOURNE SUSSEX

MAY 1936

Record drawing approximately 1/100 scale