

garage
GL +40.70
GFL +40.75
FFL +43.72

house
GL +40.50
GFL +40.65
FFL +43.40



garage elevation | south

garage doors
anthracite grey
(2125x2375)



garage elevation | west



elevation | west



elevation | south



garage elevation | north



elevation | east



garage elevation | east



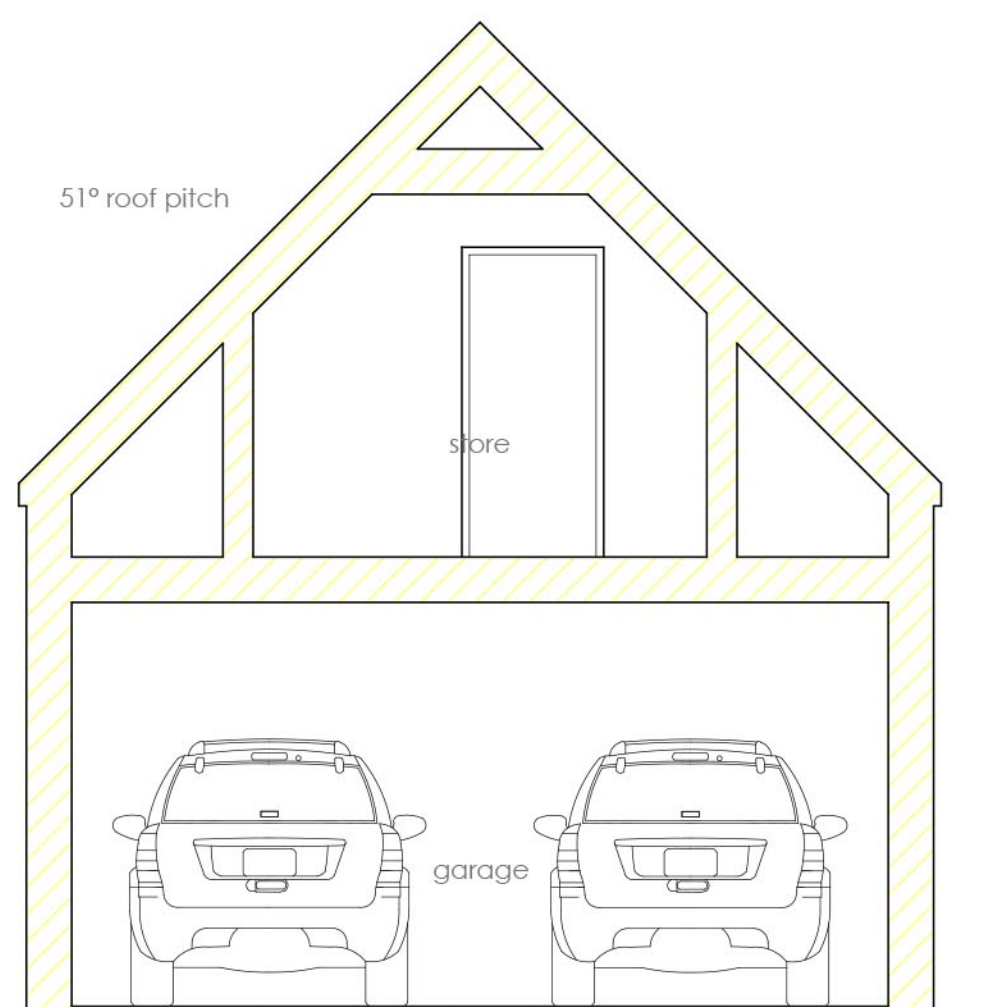
elevation | north

scale bar | 1:100 0 1 2 3 4 5

51° roof pitch

store

garage



garage section | a-a

45° roof pitch

living space to be
double height with a
feature truss

living space



section | a-a

41° roof pitch

flat roof

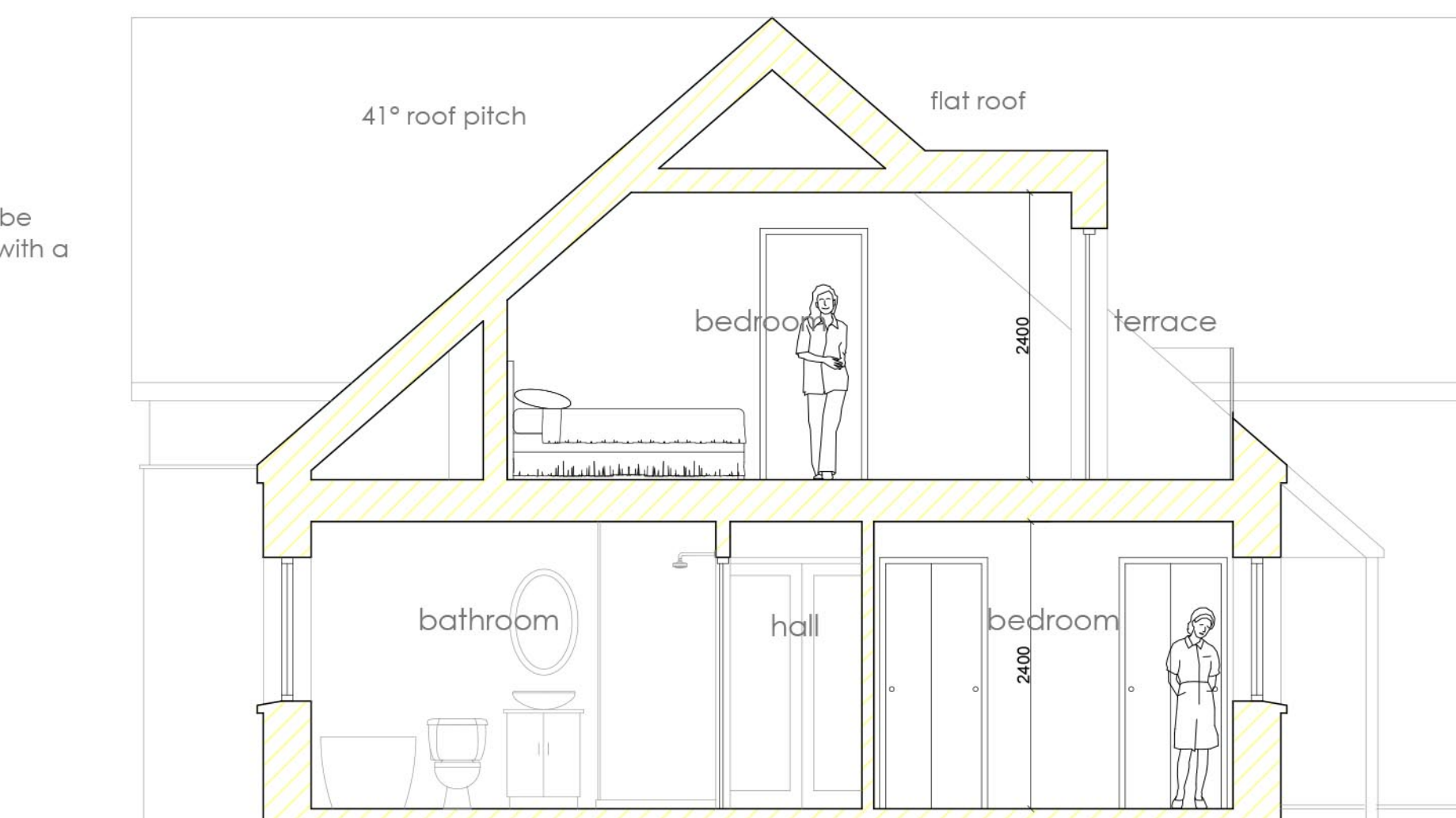
bedroom

terrace

bathroom

hall

bedroom



section | b-b

scale bar | 1:50 0 1 2 3 4 5

the copyright of this drawing subsists with
ajfitchet | architect llp.
do not scale from drawings
refer all dimensional queries to architect
read in conjunction with all other drawings

Material Finishes:		
roof	slate	
ridge	zinc	
dormer	metal cladding	dark grey
soffit	uPVC	dark grey
fascia	uPVC	dark grey
rainwater goods	uPVC	dark grey
walls	natural stone	
walls	horizontal fiber cement linings with timber texture	dark grey
basecourse	natural stone	
windows	uPVC	dark grey
doors	composite	dark grey

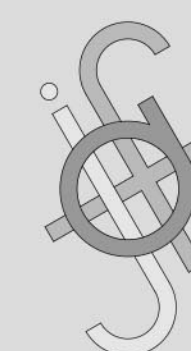
C	levels added	31.03.21
B	planning application	19.03.21
A	garage amended	17.03.21
-	prelim for comment	12.03.21
rev.	desc.	issued

Ms K. Noble
Residential Development
Land at the Hay Shed, Kinnell

description. | **sections and elevations**
drawing no. | **526_P_003**

status | planning
scale | 1:50, 1:100
paper size | A1L

drawn | lw checked | ajf



ajfitchet | architect
www.ajfitchet.com

24 south tay street | dundee | dd1 1pd
01382 339589 | studio@ajfitchet.com