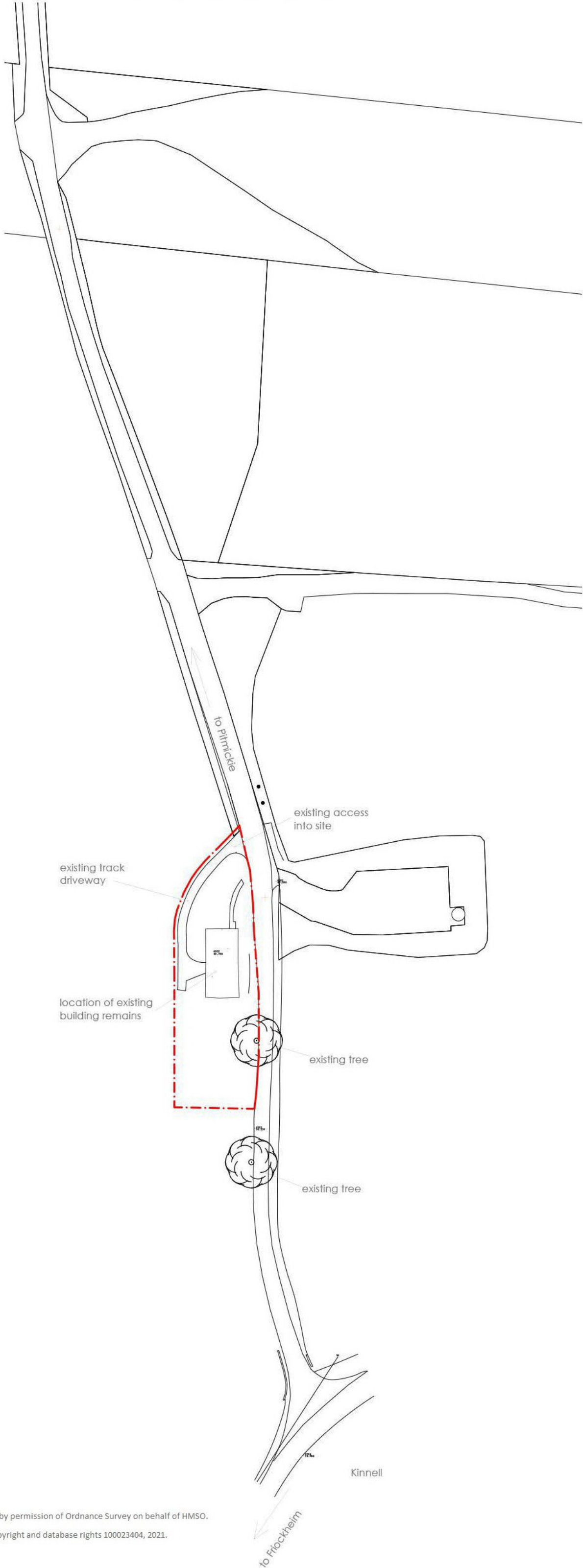
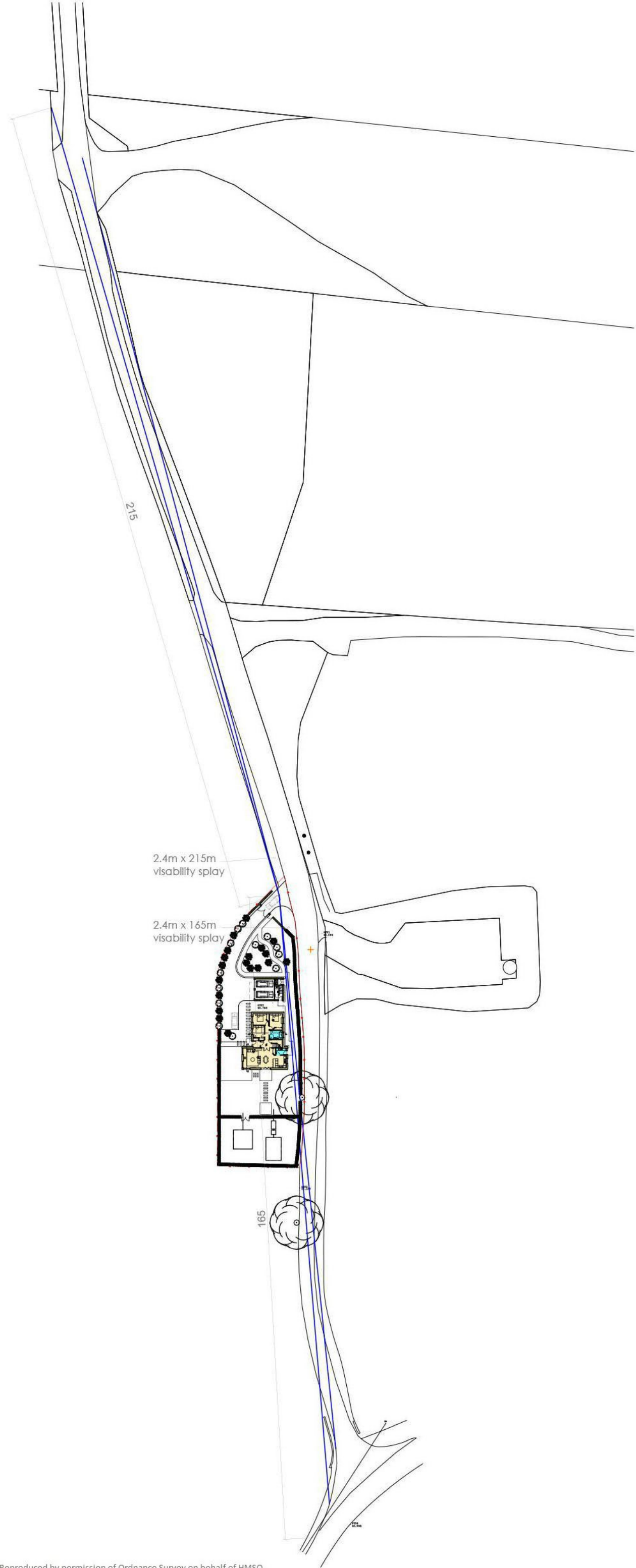


scale bar | 1:1000 0 10 20 30 40 50



Reproduced by permission of Ordnance Survey on behalf of HMSO.
© Crown Copyright and database rights 100023404, 2021.

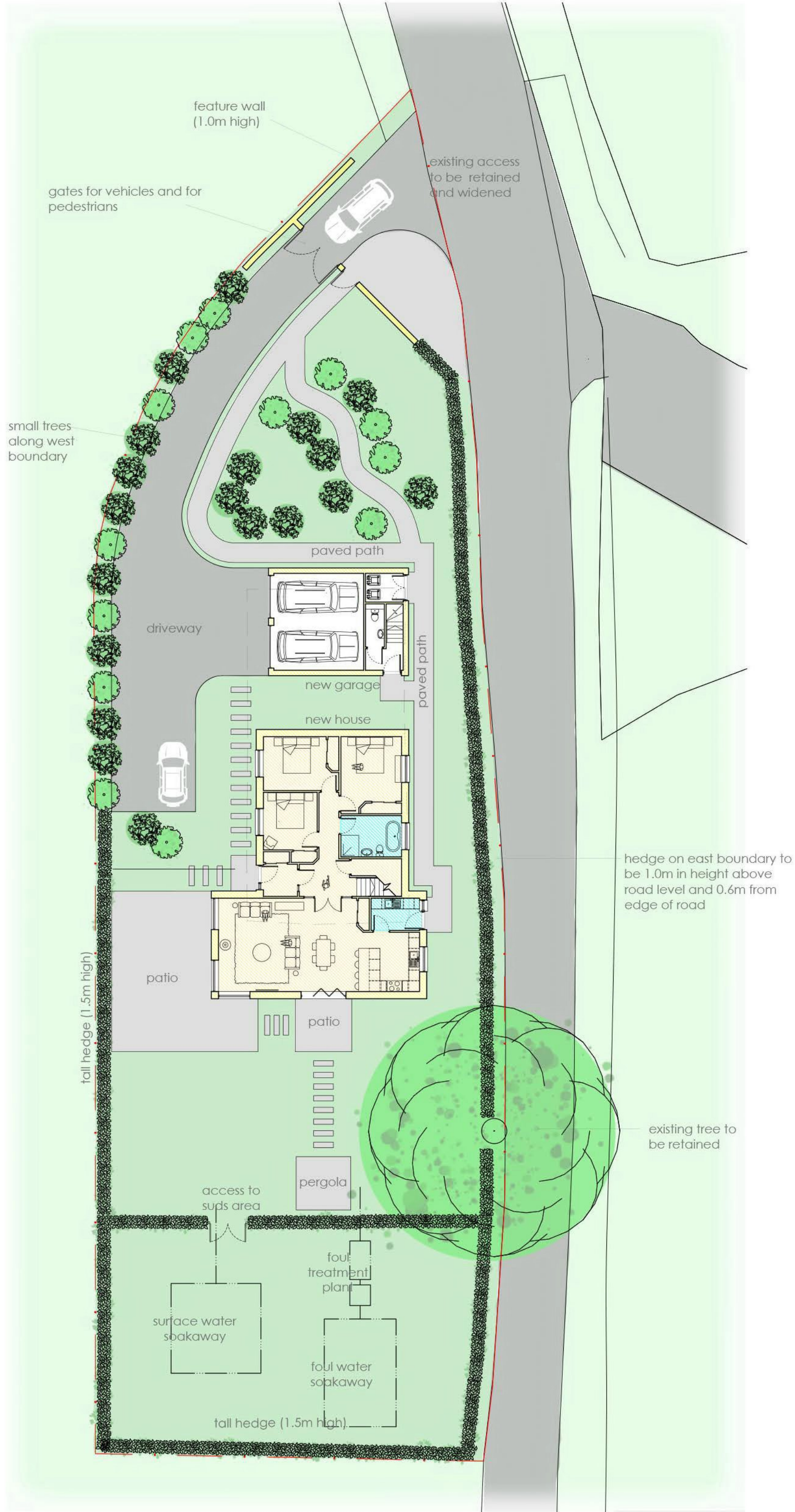
plan | location



Reproduced by permission of Ordnance Survey on behalf of HMSO.
© Crown Copyright and database rights 100023404, 2021.

plan | visibility splays

scale bar | 1:200 0 5 10



plan | site



elevation | site

the copyright of this drawing subsists with
ajfitchet | architect llp.
do not scale from drawings
refer all dimensional queries to architect
read in conjunction with all other drawings

E	boundary amended	14.04.21
D	drainage added	01.04.21
C	scale bars added	23.03.21
B	planning application	19.03.21
A	landscaping edges added	18.03.21
-	prelim for comment	17.03.21
rev.	desc.	issued

Ms K. Noble
Residential Development
Land at the Hay Shed, Kinnell

description. | **site information**
drawing no. | **526_P_001**

status | planning
scale | 1:1000, 1:200
paper size | A1L

drawn | lw checked | ajf



ajfitchet | architect
www.ajfitchet.com

24 south tay street | dundee | dd1 1pd
01382 339589 | studio@ajfitchet.com