

Post Room
F.O.D.D.C
19 APR 2021

ALL DRAINAGE WORK IS TO BE UNDERTAKEN IN ACCORDANCE WITH THE FODDC TECHNICAL DRAINAGE DOCUMENT.

FOUL WATER IS TO DISCHARGE INTO THE PUBLIC SEWER VIA THE EXISTING CONNECTION, SUBJECT TO THE APPROVAL OF THE RELEVANT AUTHORITY.

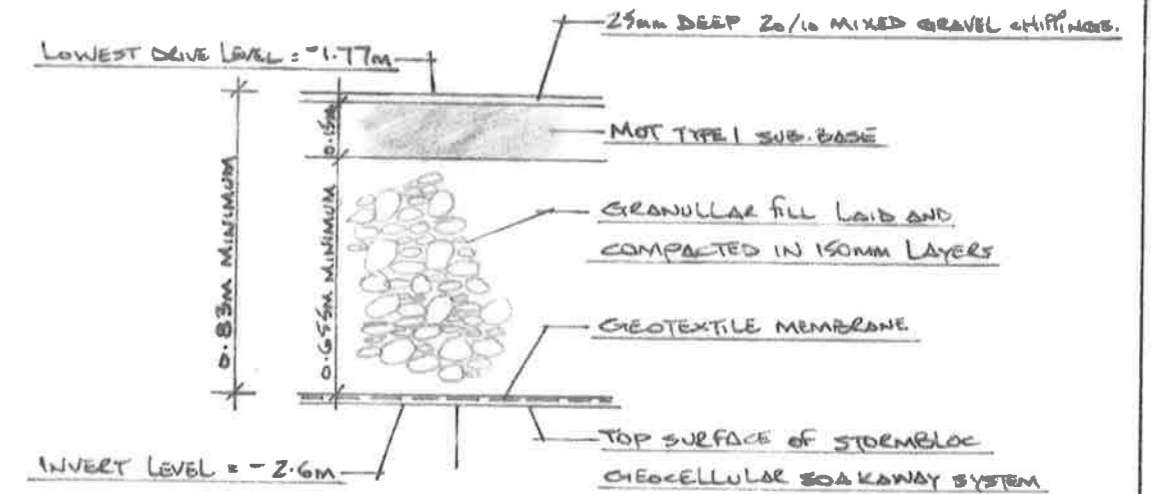
SURFACE WATER IS TO DISCHARGE INTO A SOAKAWAY, THAT IS OF GEOCELLULAR CONSTRUCTION AND INCORPORATES A SILT FOR EASE OF MAINTENANCE. THE SOAKAWAY IS TO BE POSITIONED A MINIMUM 5.0M FROM A BUILDING AND 2.0M FROM A BOUNDARY.

THE SOAKAWAY VOLUME = 15.0M³
THE INVERT LEVEL OF DRAINS ENTERING THE SOAKAWAY = -2.6M

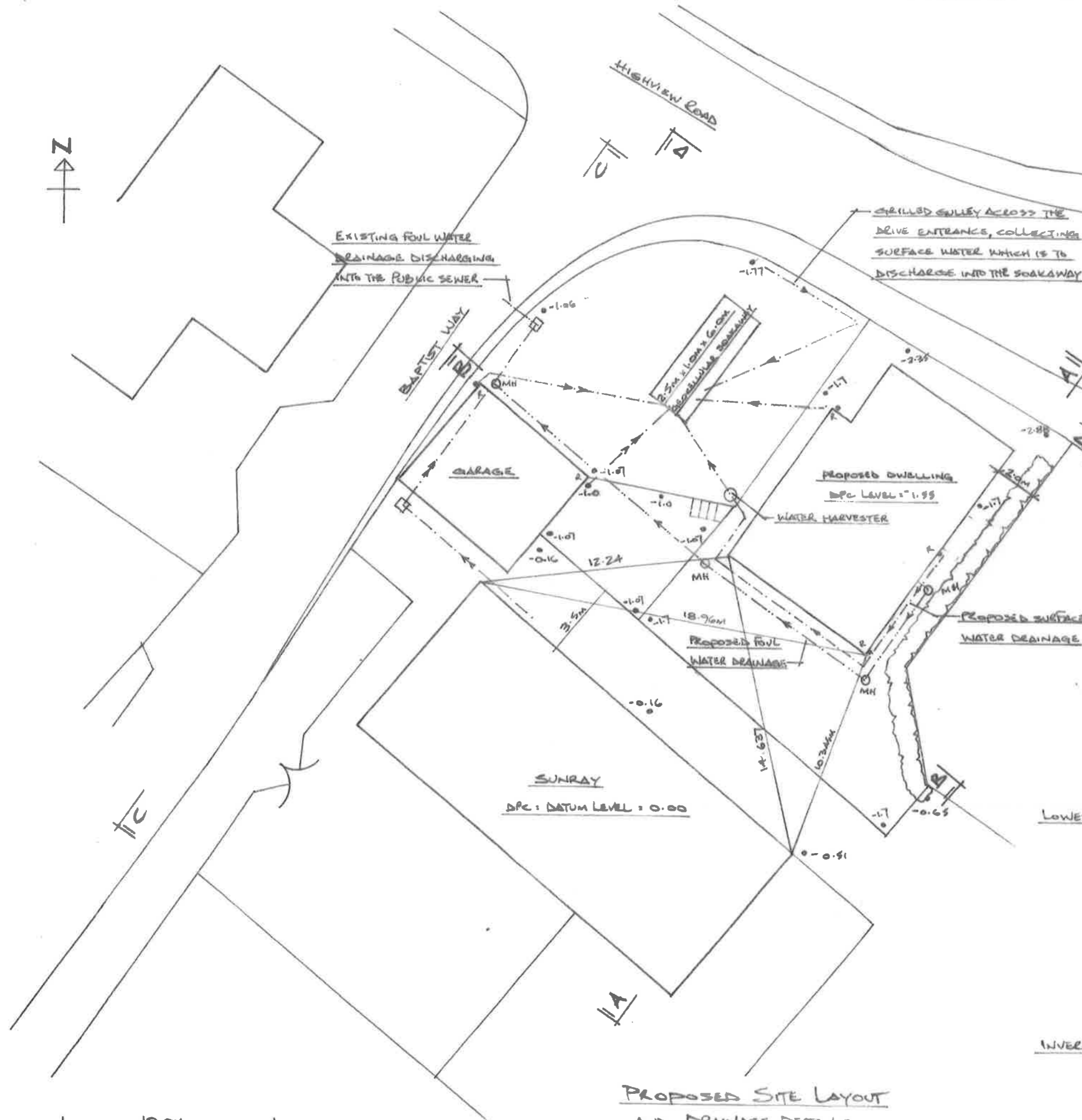
SURFACE WATER FROM THE REAR AND PART OF THE FRONT ELEVATIONS DISCHARGES INTO AN 1800 LITRE WATER HARVESTER FOR RE-USE ON THE GARDEN, WITH SURPLUS WATER DISCHARGING INTO THE SOAKAWAY.

EXCESSANCE WATER FROM THE SOAKAWAY WILL FOLLOW THE TOPOGRAPHY OF THE GROUND AND EXIT ONTO THE HIGHWAY.

THE SOAKAWAY IS TO BE A STORMBLOC GEOCELLULAR SOAKAWAY SYSTEM AS DETAILED ON GUIDANCE DIAGRAM 5 OF THE FODDC TECHNICAL DRAINAGE DOCUMENT. THE MINIMUM COVER REQUIRED IS 800MM, FOR USE IN CAR PARK AREAS, FOR MORE THAN 2500kg (AS DETAILED IN DIAGRAM 5).



REV B REVISED DWELLING
REV A SOAKAWAY DETAILS
PF 02003B



PROPOSED SITE LAYOUT AND DRAINAGE DETAILS
1:200

10.0M
1:200