

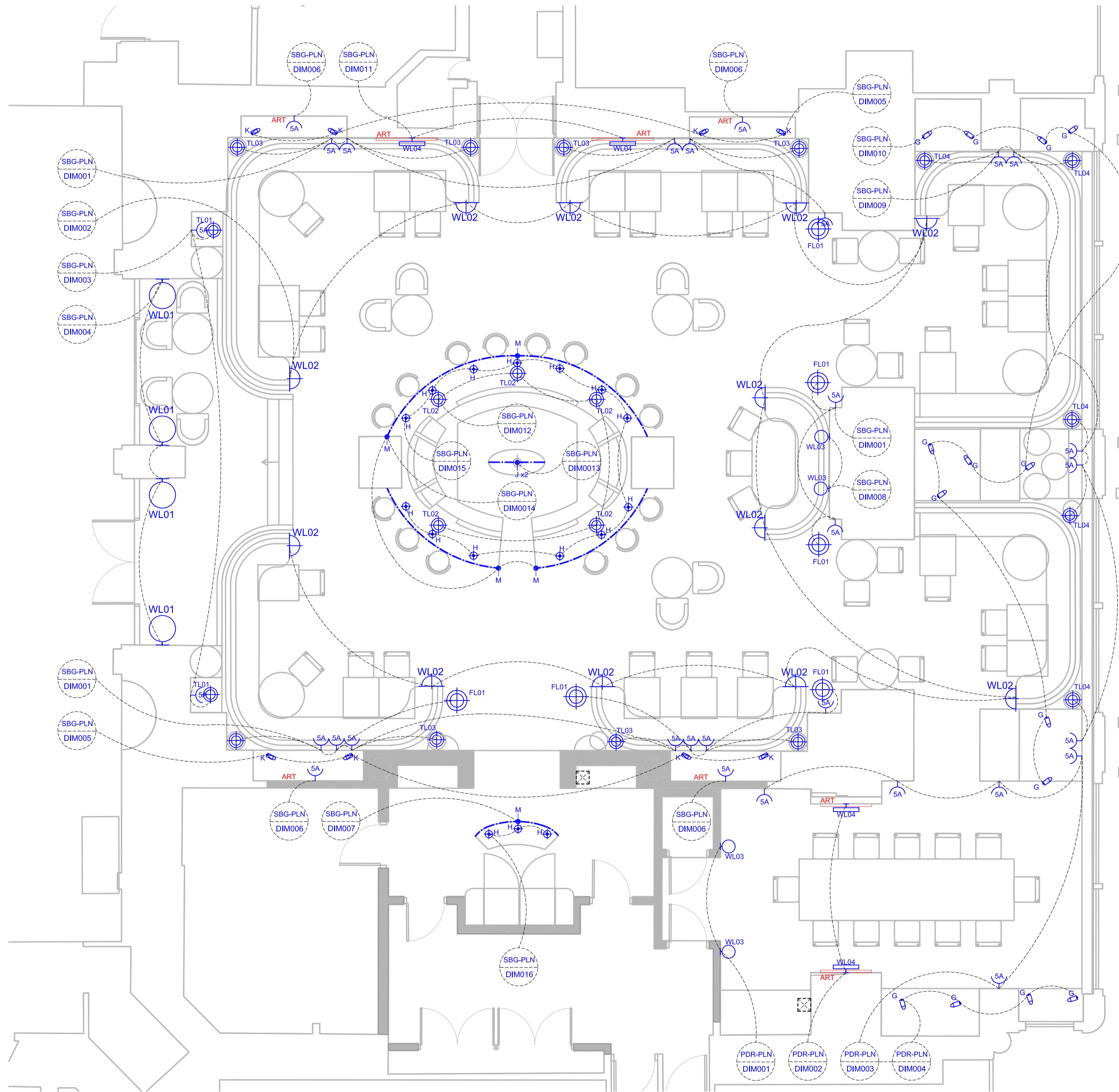
DESIGN

NOTES:

- Sail colour to be coordinated with Ombra to agree best balance between daytime shade and nighttime light reflection.
- Cable ways to sail pole floodlights to be coordinated by Architect, Client choice is cables run inside poles
- Sail floodlight pole fixings to be coordinated by Architect, Client choice is screw fixing to poles
- See Lighting Specification for fittings requiring remote transformers
- Do not scale from this drawing. Contractors must verify all dimensions on site before installation

LIGHTING KEY

- Ceiling recessed downlight
- Surface mounted spotlight
- Cove lighting
- Floor recessed uplight
- Decorative Floor Light
- Planter spike spotlight
- Under bar counter mini downlight
- Back bar / bottle step lighting
- Niche Artwork Spotlight
- Window cove lighting
- Bar plinth lighting
- Pendant
- Decorative Table Light
- Decorative Wall Light
- 5A Wall Socket for Decorative Lighting
- 5A Floor Socket for Decorative Lighting
- Lighting Control Wall Switch



A	Updated xref received 24.03.21	25.03.21	VJ
---	--------------------------------	----------	----

REV.	DESCRIPTION	DATE	BY
------	-------------	------	----

NOTE:
Drawing to be read in conjunction with VICTORIA JERRAM LIMITED equipment specification schedule issue no :

SITE VERIFICATION
All dimensions to be verified by the contractor on site

THIS DRAWING IS THE PROPERTY OF VICTORIA JERRAM LIMITED.

All copyright is reserved and the drawing is issued on the condition that it is not copied, reproduced, retained or disclosed to any unauthorised person, either wholly or in part without the consent of VICTORIA JERRAM LIMITED.
All electrical works associated with this drawing to be in accordance with the latest edition of IEE wiring regulations.

Client: GRH

Project: The Savoy

Area: Gordon Ramsay Seafood Bar & Grill

Drg Title: Lighting Layout Plan

Drg. No. 1237P01 Job No: 1237

Scale: 1:20 @ A1 Date: 03.03.21

Rev. No. A Drawn By: VJ Checked By: VJ

VJ LD VICTORIA JERRAM LIGHTING DESIGN
3 Boyle Farm Road, Thames Ditton, Surrey KT7 0TS
+44(0)7930 489193
info@victoriajerram.com
victoriajerram.com

